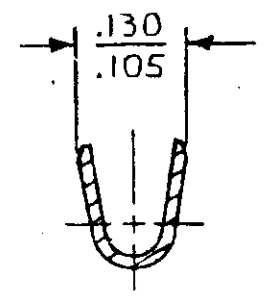
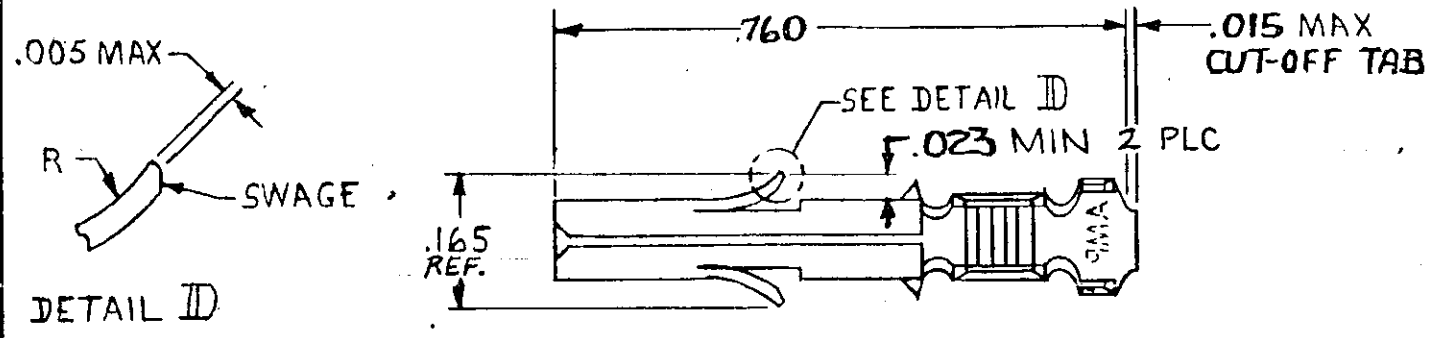


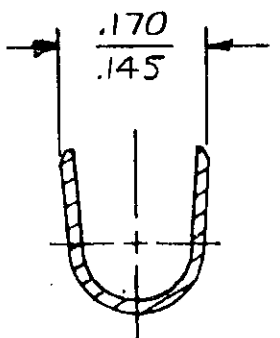
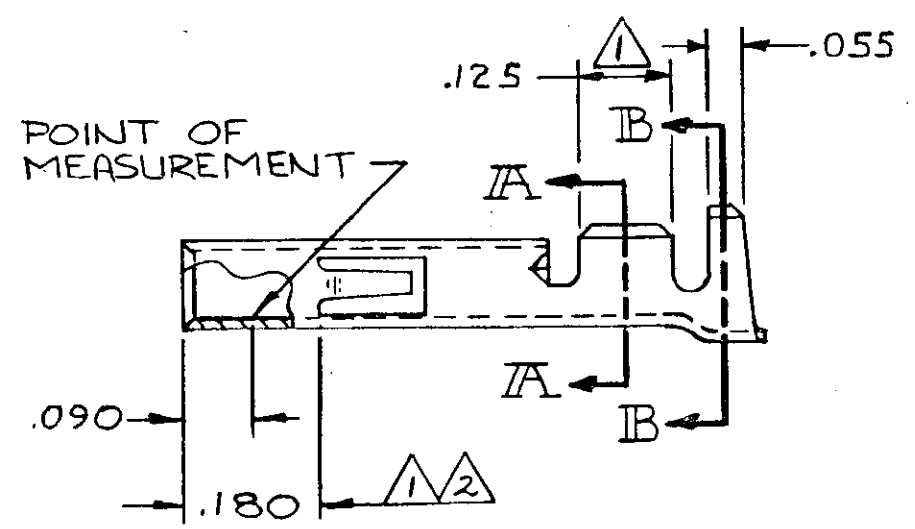


© COPYRIGHT 1973 BY AMP INCORPORATED, HARRISBURG, PA.  
 ALL INTERNATIONAL RIGHTS RESERVED, AMP INCORPORATED PRODUCTS  
 COVERED BY U. S. AND FOREIGN PATENTS AND/OR PATENTS PENDING.

REVISIONS						
P	F	ZONE	LTR	DESCRIPTION	DATE	APPROVED
✓	✓		M	REDRAWN & UPDATED M-6457	6-5-81	MSF/S.H.
✓	✓		N	ADDED .090, .180 DIMS, POINT OF MEAS, M-7357	5/12/83	TW/DH
✓			P	REVISED AG 57	9/24/83	SP/RS S. Jamm
✓			P	RESTORED	9/13/84	BK/D/RS
			R	REV PER EC 0730-3607-91	1-5-93	RV/RS



SECTION A-A



SECTION B-B


- ① .000030 THICK GOLD OVER NICKEL ON INSIDE OF RECEPTACLE AND WIRE BARREL; REMAINDER OF CONTACT IS NICKEL PLATED.
- ② .000030 THICK GOLD OVER NICKEL ON INSIDE OF RECEPTACLE; REMAINDER OF CONTACT IS NICKEL PLATED.

GOLD	②	.012 BRASS	350550-7
		.012 PH. BRZ	350550-6
PRE-TIN		.012 PH. BRZ	350550-3
GOLD	①	.012 BRASS	350550-2
PRE-TIN			350550-1
FINISH		MATERIAL	PART NO

UNLESS OTHERWISE SPECIFIED DIMENSIONS ARE IN INCHES. TOLERANCES ON: DECIMALS ±.015 ANGLES ±	CONTRACT NO	<b>AMP</b>   AMP INCORPORATED Harrisburg, Pa.			
	DR			m. Feher 4-21-81	
	CHK	J.S. Heide 6/9/81	NAME	SOCKET, (LOOSE PIECE) UNIVERSAL MATE-N-LOK	
	APPD	P. Polchuk 6-10-81	SIZE	B	
WIRE RANGE	20-14- AWG	CODE IDENT NO	00779	DRAWING NO	350550
INSULATION RANGE	.130 DIA MAX	OTHER APPD		SCALE	4-1
			SHEET	-1-	

## Looking for pricing, stock, or lifecycle information?

Click below to explore more details on WIN SOURCE:

 [View 350550-1 on WIN SOURCE](#)

 [TE Connectivity](#) Information

## Optimize Your Supply Chain with WIN SOURCE Solutions

-  Global Sourcing Solution
-  Obsolete Management
-  Cost Control Management
-  Shortage Management
-  Alternative Solution
-  Excess Inventory Management