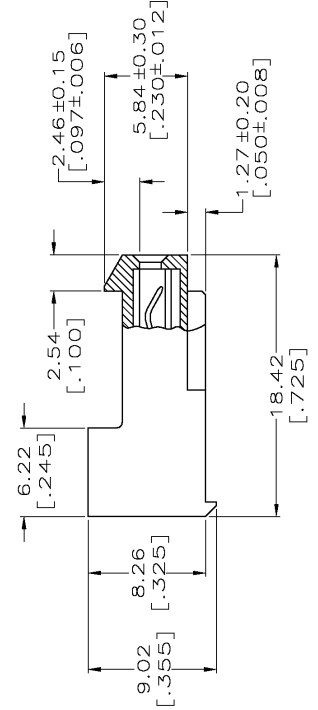
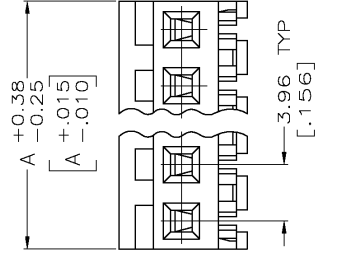
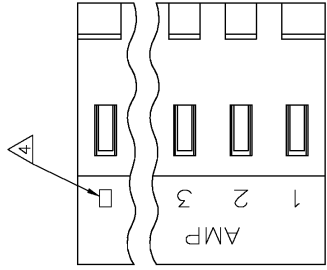




**THE DATASHEET OF**  
**3-640426-4**





- 1. MATERIAL: CONNECTOR - NYLON UL94-V2 (ORANGE)  
 CONTACTS - 0.30[.012] THICK COPPER ALLOY  
 (BRIGHT TIN-LEAD 0.00203[.000080] MIN. THICK  
 FOR CONTACTS 640426-2 THRU 2-640426-4).  
 (BRIGHT TIN PLATE 0.00305[.000120] MIN. THICK  
 FOR CONTACTS 3-640426-2 THRU 5-640426-4).
- 2. CONTACTS ACCEPT 18 AWG WIRE WITH 2.41[.095] MAX  
 INSULATION DIAMETER.
- 3. CONTACTS MUST ACCEPT 1.14±0.03[.045]  
 POST AND REMAIN LOCKED IN POSITION.
- 4. IDENTIFICATION NUMBER FOR LAST CIRCUIT MAY  
 NOT APPEAR ON ALL ASSEMBLIES.
- 5. DIMENSIONS IN BRACKETS ARE IN INCHES.
- 6. HOUSING FEATURES ARE: CLOSED END WITH LOCKING  
 RAMP.

**METRIC**

THIS DRAWING IS A CONTROLLED DOCUMENT:

DRAWN	S. CARPENTER
APP'D	D. BOSSI
DATE	108-1051
APPLICATION SPEC	114-1020
WEIGHT	
DIMENSIONS:	
INCHES	
OTHERWISE SPECIFIED:	
FINISH	
MATERIAL	
ANGLES	
FINISH	
CUSTOMER DRAWING	

## Looking for pricing, stock, or lifecycle information?

Click below to explore more details on WIN SOURCE:

 [View 3-640426-4 on WIN SOURCE](#)

 [TE Connectivity](#) Information

## Optimize Your Supply Chain with WIN SOURCE Solutions

-  Global Sourcing Solution
-  Obsolete Management
-  Cost Control Management
-  Shortage Management
-  Alternative Solution
-  Excess Inventory Management