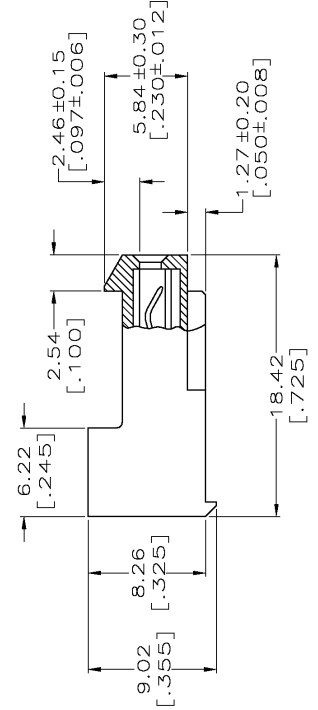
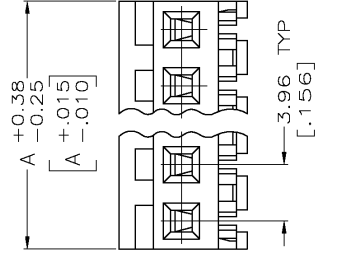
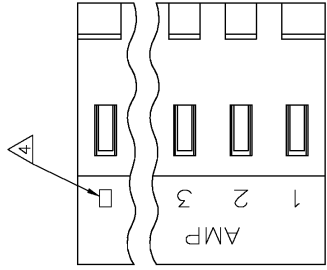




THE DATASHEET OF
3-640426-5





- 1. MATERIAL: CONNECTOR - NYLON UL94-V2 (ORANGE)
 CONTACTS - 0.30[.012] THICK COPPER ALLOY
 (BRIGHT TIN-LEAD 0.00203[.000080] MIN. THICK
 FOR CONTACTS 640426-2 THRU 2-640426-4).
 (BRIGHT TIN PLATE 0.00305[.000120] MIN. THICK
 FOR CONTACTS 3-640426-2 THRU 5-640426-4).
- 2. CONTACTS ACCEPT 18 AWG WIRE WITH 2.41[.095] MAX
 INSULATION DIAMETER.
- 3. CONTACTS MUST ACCEPT 1.14+0.03[.045]
 POST AND REMAIN LOCKED IN POSITION.
- 4. IDENTIFICATION NUMBER FOR LAST CIRCUIT MAY
 NOT APPEAR ON ALL ASSEMBLIES.
- 5. DIMENSIONS IN BRACKETS ARE IN INCHES.
- 6. HOUSING FEATURES ARE: CLOSED END WITH LOCKING
 RAMP.

METRIC

THIS DRAWING IS A CONTROLLED DOCUMENT:

DRAWN BY:	S. CARPENTER
APPROVED BY:	D. BOSSI
DATE:	108-1051
APPLICATION SPEC:	114-1020
WEIGHT:	
CUSTOMER DRAWING:	

DIMENSIONS:	INCHES	±
OTHERWISE SPECIFIED:		
FINISH:		
ANGLES:		
MATERIAL:		

Looking for pricing, stock, or lifecycle information?

Click below to explore more details on WIN SOURCE:

 [View 3-640426-5 on WIN SOURCE](#)

 [TE Connectivity](#) Information

Optimize Your Supply Chain with WIN SOURCE Solutions

-  Global Sourcing Solution
-  Obsolete Management
-  Cost Control Management
-  Shortage Management
-  Alternative Solution
-  Excess Inventory Management