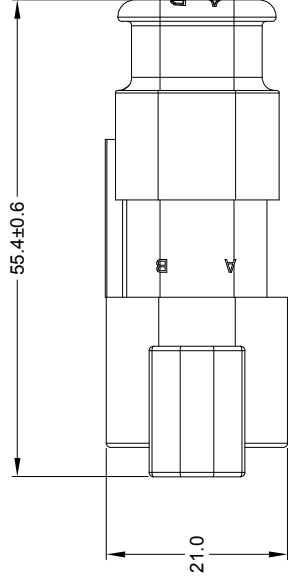
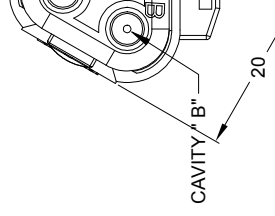
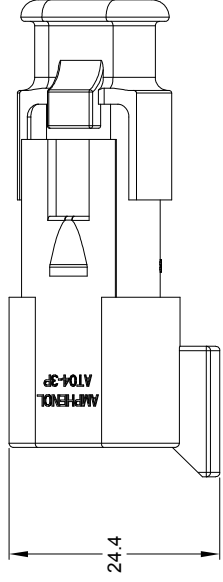
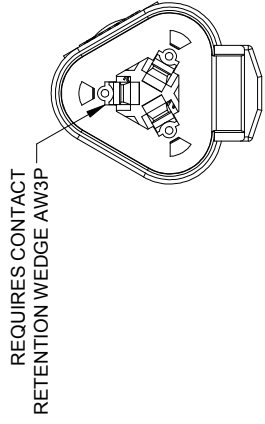
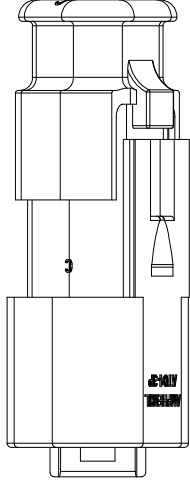




**THE DATASHEET OF
AT04-3P-SR02BLK**



REV	E
A3	
A4	C05
A5	



NOTES: UNLESS OTHERWISE SPECIFIED

- MATERIAL:
HOUSING: THERMOPLASTIC
SEAL: SILICONE RUBBER
- MODIFICATIONS: STRAIN RELIEF END CAP;
REDUCED DIA. WIRE SEAL
- SPECIFICATIONS:
3.1 CURRENT RATING: 13 AMPS
3.2 OPERATING TEMPERATURE: -55°C TO +125°C
3.3 DIELECTRIC WITHSTANDING VOLTAGE: LESS THAN 2 MILLIAMPS CURRENT LEAKAGE @ 1500 VOLTS AC.
3.4 INSULATION RESISTANCE: 1000 MEGOHMS MIN @ 25°C.
3.5 MOISTURE RESISTANCE:
IP68(1M OF WATER FOR A PERIOD OF 24 HOURS, MATED CONDITION)
IP69K(MATED CONDITION)
3.6 MATING CYCLE DURABILITY: 100 CYCLES
3.7 RoHS COMPLIANT
- MATING PART: AT06-3S* PLUG
(* = MODIFICATIONS AND COLORS)
- ALL DIMENSIONS ARE FOR REFERENCE USE ONLY.

PART NUMBER CHART	
COLOR	PART NUMBER
GREY	AT04-3P-SR02GRY
BLACK	AT04-3P-SR02BLK
BLUE	AT04-3P-SR02BLU
BROWN	AT04-3P-SR02BRN
GREEN	AT04-3P-SR02GRN
RED	AT04-3P-SR02RED
WHITE	AT04-3P-SR02WHT
YELLOW	AT04-3P-SR02YEL
ORANGE	AT04-3P-SR02ORG

CONTACT SIZE	MIN. INSUL O.D.		MAX. INSUL O.D.		TYPICAL WIRE RANGE
	16	1.35 mm (.053 in)	3.05 mm (.120 in)		14 - 20 AWG (2.0-0.5mm ²)

6 CONTACT SIZE AND REAR SEAL WIRE RANGE:

SEE PART NUMBER	PART NUMBER
QUANTITY	UNLESS OTHERWISE SPECIFIED
	1) All dimensions are in metric(mm).
	2) Tolerances are as follows:
	1 PL DEC ±0.15
	2 PL DEC ±0.15
	3 PL DEC ±0.08
	4 PL DEC ±0.15
	5 PL DEC ±0.15
	6 PL DEC ±0.15
	7 PL DEC ±0.15
	8 PL DEC ±0.15
	9 PL DEC ±0.15
	10 PL DEC ±0.15
	11 PL DEC ±0.15
	12 PL DEC ±0.15
	13 PL DEC ±0.15
	14 PL DEC ±0.15
	15 PL DEC ±0.15
	16 PL DEC ±0.15
	17 PL DEC ±0.15
	18 PL DEC ±0.15
	19 PL DEC ±0.15
	20 PL DEC ±0.15
	21 PL DEC ±0.15
	22 PL DEC ±0.15
	23 PL DEC ±0.15
	24 PL DEC ±0.15
	25 PL DEC ±0.15
	26 PL DEC ±0.15
	27 PL DEC ±0.15
	28 PL DEC ±0.15
	29 PL DEC ±0.15
	30 PL DEC ±0.15
	31 PL DEC ±0.15
	32 PL DEC ±0.15
	33 PL DEC ±0.15
	34 PL DEC ±0.15
	35 PL DEC ±0.15
	36 PL DEC ±0.15
	37 PL DEC ±0.15
	38 PL DEC ±0.15
	39 PL DEC ±0.15
	40 PL DEC ±0.15
	41 PL DEC ±0.15
	42 PL DEC ±0.15
	43 PL DEC ±0.15
	44 PL DEC ±0.15
	45 PL DEC ±0.15
	46 PL DEC ±0.15
	47 PL DEC ±0.15
	48 PL DEC ±0.15
	49 PL DEC ±0.15
	50 PL DEC ±0.15
	51 PL DEC ±0.15
	52 PL DEC ±0.15
	53 PL DEC ±0.15
	54 PL DEC ±0.15
	55 PL DEC ±0.15
	56 PL DEC ±0.15
	57 PL DEC ±0.15
	58 PL DEC ±0.15
	59 PL DEC ±0.15
	60 PL DEC ±0.15
	61 PL DEC ±0.15
	62 PL DEC ±0.15
	63 PL DEC ±0.15
	64 PL DEC ±0.15
	65 PL DEC ±0.15
	66 PL DEC ±0.15
	67 PL DEC ±0.15
	68 PL DEC ±0.15
	69 PL DEC ±0.15
	70 PL DEC ±0.15
	71 PL DEC ±0.15
	72 PL DEC ±0.15
	73 PL DEC ±0.15
	74 PL DEC ±0.15
	75 PL DEC ±0.15
	76 PL DEC ±0.15
	77 PL DEC ±0.15
	78 PL DEC ±0.15
	79 PL DEC ±0.15
	80 PL DEC ±0.15
	81 PL DEC ±0.15
	82 PL DEC ±0.15
	83 PL DEC ±0.15
	84 PL DEC ±0.15
	85 PL DEC ±0.15
	86 PL DEC ±0.15
	87 PL DEC ±0.15
	88 PL DEC ±0.15
	89 PL DEC ±0.15
	90 PL DEC ±0.15
	91 PL DEC ±0.15
	92 PL DEC ±0.15
	93 PL DEC ±0.15
	94 PL DEC ±0.15
	95 PL DEC ±0.15
	96 PL DEC ±0.15
	97 PL DEC ±0.15
	98 PL DEC ±0.15
	99 PL DEC ±0.15
	100 PL DEC ±0.15
	101 PL DEC ±0.15
	102 PL DEC ±0.15
	103 PL DEC ±0.15
	104 PL DEC ±0.15
	105 PL DEC ±0.15
	106 PL DEC ±0.15
	107 PL DEC ±0.15
	108 PL DEC ±0.15
	109 PL DEC ±0.15
	110 PL DEC ±0.15
	111 PL DEC ±0.15
	112 PL DEC ±0.15
	113 PL DEC ±0.15
	114 PL DEC ±0.15
	115 PL DEC ±0.15
	116 PL DEC ±0.15
	117 PL DEC ±0.15
	118 PL DEC ±0.15
	119 PL DEC ±0.15
	120 PL DEC ±0.15
	121 PL DEC ±0.15
	122 PL DEC ±0.15
	123 PL DEC ±0.15
	124 PL DEC ±0.15
	125 PL DEC ±0.15
	126 PL DEC ±0.15
	127 PL DEC ±0.15
	128 PL DEC ±0.15
	129 PL DEC ±0.15
	130 PL DEC ±0.15
	131 PL DEC ±0.15
	132 PL DEC ±0.15
	133 PL DEC ±0.15
	134 PL DEC ±0.15
	135 PL DEC ±0.15
	136 PL DEC ±0.15
	137 PL DEC ±0.15
	138 PL DEC ±0.15
	139 PL DEC ±0.15
	140 PL DEC ±0.15
	141 PL DEC ±0.15
	142 PL DEC ±0.15
	143 PL DEC ±0.15
	144 PL DEC ±0.15
	145 PL DEC ±0.15
	146 PL DEC ±0.15
	147 PL DEC ±0.15
	148 PL DEC ±0.15
	149 PL DEC ±0.15
	150 PL DEC ±0.15
	151 PL DEC ±0.15
	152 PL DEC ±0.15
	153 PL DEC ±0.15
	154 PL DEC ±0.15
	155 PL DEC ±0.15
	156 PL DEC ±0.15
	157 PL DEC ±0.15
	158 PL DEC ±0.15
	159 PL DEC ±0.15
	160 PL DEC ±0.15
	161 PL DEC ±0.15
	162 PL DEC ±0.15
	163 PL DEC ±0.15
	164 PL DEC ±0.15
	165 PL DEC ±0.15
	166 PL DEC ±0.15
	167 PL DEC ±0.15
	168 PL DEC ±0.15
	169 PL DEC ±0.15
	170 PL DEC ±0.15
	171 PL DEC ±0.15
	172 PL DEC ±0.15
	173 PL DEC ±0.15
	174 PL DEC ±0.15
	175 PL DEC ±0.15
	176 PL DEC ±0.15
	177 PL DEC ±0.15
	178 PL DEC ±0.15
	179 PL DEC ±0.15
	180 PL DEC ±0.15
	181 PL DEC ±0.15
	182 PL DEC ±0.15
	183 PL DEC ±0.15
	184 PL DEC ±0.15
	185 PL DEC ±0.15
	186 PL DEC ±0.15
	187 PL DEC ±0.15
	188 PL DEC ±0.15
	189 PL DEC ±0.15
	190 PL DEC ±0.15
	191 PL DEC ±0.15
	192 PL DEC ±0.15
	193 PL DEC ±0.15
	194 PL DEC ±0.15
	195 PL DEC ±0.15
	196 PL DEC ±0.15
	197 PL DEC ±0.15
	198 PL DEC ±0.15
	199 PL DEC ±0.15
	200 PL DEC ±0.15
	201 PL DEC ±0.15
	202 PL DEC ±0.15
	203 PL DEC ±0.15
	204 PL DEC ±0.15
	205 PL DEC ±0.15
	206 PL DEC ±0.15
	207 PL DEC ±0.15
	208 PL DEC ±0.15
	209 PL DEC ±0.15
	210 PL DEC ±0.15
	211 PL DEC ±0.15
	212 PL DEC ±0.15
	213 PL DEC ±0.15
	214 PL DEC ±0.15
	215 PL DEC ±0.15
	216 PL DEC ±0.15
	217 PL DEC ±0.15
	218 PL DEC ±0.15
	219 PL DEC ±0.15
	220 PL DEC ±0.15
	221 PL DEC ±0.15
	222 PL DEC ±0.15
	223 PL DEC ±0.15
	224 PL DEC ±0.15
	225 PL DEC ±0.15
	226 PL DEC ±0.15
	227 PL DEC ±0.15
	228 PL DEC ±0.15
	229 PL DEC ±0.15
	230 PL DEC ±0.15
	231 PL DEC ±0.15
	232 PL DEC ±0.15
	233 PL DEC ±0.15
	234 PL DEC ±0.15
	235 PL DEC ±0.15
	236 PL DEC ±0.15
	237 PL DEC ±0.15
	238 PL DEC ±0.15
	239 PL DEC ±0.15
	240 PL DEC ±0.15
	241 PL DEC ±0.15
	242 PL DEC ±0.15
	243 PL DEC ±0.15
	244 PL DEC ±0.15
	245 PL DEC ±0.15
	246 PL DEC ±0.15
	247 PL DEC ±0.15
	248 PL DEC ±0.15
	249 PL DEC ±0.15
	250 PL DEC ±0.15
	251 PL DEC ±0.15
	252 PL DEC ±0.15
	253 PL DEC ±0.15
	254 PL DEC ±0.15
	255 PL DEC ±0.15
	256 PL DEC ±0.15
	257 PL DEC ±0.15
	258 PL DEC ±0.15
	259 PL DEC ±0.15
	260 PL DEC ±0.15
	261 PL DEC ±0.15
	262 PL DEC ±0.15
	263 PL DEC ±0.15
	264 PL DEC ±0.15
	265 PL DEC ±0.15
	266 PL DEC ±0.15
	267 PL DEC ±0.15
	268 PL DEC ±0.15
	269 PL DEC ±0.15
	270 PL DEC ±0.15
	271 PL DEC ±0.15
	272 PL DEC ±0.15
	273 PL DEC ±0.15
	274 PL DEC ±0.15
	275 PL DEC ±0.15
	276 PL DEC ±0.15
	277 PL DEC ±0.15
	278 PL DEC ±0.15
	279 PL DEC ±0.15
	280 PL DEC ±0.15
	281 PL DEC ±0.15
	282 PL DEC ±0.15
	283 PL DEC ±0.15
	284 PL DEC ±0.15
	285 PL DEC ±0.15
	286 PL DEC ±0.15
	287 PL DEC ±0.15
	288 PL DEC ±0.15
	289 PL DEC ±0.15
	290 PL DEC ±0.15
	291 PL DEC ±0.15
	292 PL DEC ±0.15
	293 PL DEC ±0.15
	294 PL DEC ±0.15
	295 PL DEC ±0.15
	296 PL DEC ±0.15
	297 PL DEC ±0.15
	298 PL DEC ±0.15
	299 PL DEC ±0.15
	300 PL DEC ±0.15
	301 PL DEC ±0.15
	302 PL DEC ±0.15
	303 PL DEC ±0.15
	304 PL DEC ±0.15
	305 PL DEC ±0.15
	306 PL DEC ±0.15
	307 PL DEC ±0.15
	308 PL DEC ±0.15
	309 PL DEC ±0.15
	310 PL DEC ±0.15
	311 PL DEC ±0.15
	312 PL DEC ±0.15
	313 PL DEC ±0.15
	314 PL DEC ±0.15
	315 PL DEC ±0.15
	316 PL DEC ±0.15
	317 PL DEC ±0.15
	318 PL DEC ±0.15
	319 PL DEC ±0.15
	320 PL DEC ±0.15
	321 PL DEC ±0.15
	322 PL DEC ±0.15
	323 PL DEC ±0.15
	324 PL DEC ±0.15
	325 PL DEC ±0.15
	326 PL DEC ±0.15
	327 PL DEC ±0.15
	328 PL DEC ±0.15
	329 PL DEC ±0.15
	330 PL DEC ±0.15
	331 PL DEC ±0.15
	332 PL DEC ±0.15
	333 PL DEC ±0.15
	334 PL DEC ±0.15
	335 PL DEC ±0.15
	336 PL DEC ±0.15
	337 PL DEC ±0.15
	338 PL DEC ±0.15
	339 PL DEC ±0.15
	340 PL DEC ±0.15
	341 PL DEC ±0.15
	342 PL DEC ±0.15
	343 PL DEC ±0.15
	344 PL DEC ±0.15
	345 PL DEC ±0.15
	346 PL DEC ±0.15
	347 PL DEC ±0.15
	348 PL DEC ±0.15
	349 PL DEC ±0.15
	350 PL DEC ±0.15
	351 PL DEC ±0.15
	352 PL DEC ±0.15
	353 PL DEC ±0.15
	354 PL DEC ±0.15
	355 PL DEC ±0.15
	356 PL DEC ±0.15
	357 PL DEC ±0.15
	358 PL DEC ±0.15
	359 PL DEC ±0.15
	360 PL DEC ±0.15
	361 PL DEC ±0.15
	362 PL DEC ±0.15
	363 PL DEC ±0.15
	364 PL DEC ±0.15
	365 PL DEC ±0.15
	366 PL DEC ±0.15
	367 PL DEC ±0.15
	368 PL DEC ±0.15
	369 PL DEC ±0.15
	370 PL DEC ±0.15
	371 PL DEC ±0.15
	372 PL DEC ±0.15
	373 PL DEC ±0.15
	374 PL DEC ±0.15
	375 PL DEC ±0.15
	376 PL DEC ±0.15
	377 PL DEC ±0.15
	378 PL DEC ±0.15
	379 PL DEC ±0.15
	380 PL DEC ±0.15
	381 PL DEC ±0.15
	382 PL DEC ±0.15
	383 PL DEC ±0.15
	384 PL DEC ±0.15
	385 PL DEC ±0.15
	386 PL DEC ±0.15
	387 PL DEC ±0.15
	388 PL DEC ±0.15
	389 PL DEC ±0.15
	390 PL DEC ±0.15
	391 PL DEC ±0.15

A Series™ - Contact Size 16 Options (Works with: AT, ATV, AHD-9, ARC, DuraMate and PanelMate Series)

Machined Contacts, Sockets & Pins				
Part Number	Description	Size	AWG	Type
AT60-215-1631	Male Contact - Pin, Gold-plated	16	14	Machined
AT62-209-1631	Female Contact - Socket, Gold-plated	16	14	Machined
AT60-215-16141	Male Contact - Pin, Nickel-plated	16	14	Machined
AT62-209-16141	Female Contact - Socket, Nickel-plated	16	14	Machined
AT60-202-1631	Male Contact - Pin, Gold-plated	16	16-20	Machined
AT62-201-1631	Female Contact - Socket, Gold-plated	16	16-20	Machined
AT60-202-16141	Male Contact - Pin, Nickel-plated	16	16-20	Machined
AT62-201-16141	Female Contact - Socket, Nickel-plated	16	16-20	Machined
AT60-202-1631-22	Male Contact - Pin, Gold-plated	16	22-24	Machined
AT62-201-1631-22	Female Contact - Socket, Gold-plated	16	22-24	Machined
AT60-202-16141-22	Male Contact - Pin, Nickel-plated	16	22-24	Machined
AT62-201-16141-22	Female Contact - Socket, Nickel-plated	16	22-24	Machined

Tooling - Machined Contacts	
Part Number	Description
AUTK-16	Hand Crimp Tool, Size 16
AUTK-100	Universal Heavy Duty Contact Crimping Tool Kit, Size 12/16/20
CA-5D12	Universal Hand Crimp Tool, Size 12/16/20
CA-5E12	Pneumatic Crimp Tool, Size 12/16/20

Contact Removal Tools (For both Machined or Stamped & Formed Contacts)	
Part Number	Description
ATRT-100	Contact and Wedgelock Extraction Tool
AT11-310-1605	Contact Removal Tool, Plastic, Size 16

Sealing Plugs (For both Machined or Stamped & Formed Contacts)	
Part Number	Description
A114017	Sealing Plug, Size 16, White
A114017-SR	Sealing Plug, Size 16, SR01 Series, Black
AT13-217-1605	Locking Sealing Plug, Size 16, Grey
AT13-217-1605-SR	Locking Sealing Plug, Size 16, SR01 Series, Red

Stamped & Formed Contacts, Sockets & Pins				
Part Number	Description	Size	AWG	Type
AT60-14-0122	Male Contact - Pin, Nickel-plated	16	14-18	Stamped & Formed
AT62-14-0122	Female Contact - Socket, Nickel-plated	16	14-18	Stamped & Formed
AT60-14-0144	Male Contact - Pin, Gold-plated	16	14-18	Stamped & Formed
AT62-14-0144	Female Contact - Socket, Gold-plated	16	14-18	Stamped & Formed
AT60-16-0122	Male Contact - Pin, Nickel-plated	16	16-18	Stamped & Formed
AT62-16-0122	Female Contact - Socket, Nickel-plated	16	16-18	Stamped & Formed
AT60-16-0144	Male Contact - Pin, Gold-plated	16	16-18	Stamped & Formed
AT62-16-0144	Female Contact - Socket, Gold-plated	16	16-18	Stamped & Formed
AT60-16-0622	Male Contact - Pin, Nickel-plated	16	16-20	Stamped & Formed
AT62-16-0622	Female Contact - Socket, Nickel-plated	16	16-20	Stamped & Formed
AT60-16-0644	Male Contact - Pin, Gold-plated	16	16-20	Stamped & Formed
AT62-16-0644	Female Contact - Socket, Gold-plated	16	16-20	Stamped & Formed
AT60-16-0677	Male Contact - Pin, Tin-plated	16	16-20	Stamped & Formed
AT62-16-0677	Female Contact - Socket, Tin-plated	16	16-20	Stamped & Formed
AT60-16-0822	Male Contact - Pin, Nickel-plated	16	20-22	Stamped & Formed
AT62-16-0822	Female Contact - Socket, Nickel-plated	16	20-22	Stamped & Formed
AT60-16-0844	Male Contact - Pin, Gold-plated	16	20-22	Stamped & Formed
AT62-16-0844	Female Contact - Socket, Gold-plated	16	20-22	Stamped & Formed

Tooling - Stamped & Formed Contacts	
MFX-3950	Crimp Die - Size 16, 18-20AWG
MFX-3953	Crimp Die - Size 16, 16-18AWG
MFX-3975	Crimp Die - Size 16, 14-16AWG
MFX-3990	Crimp Die - Size 16, 20-22AWG
ATT-16-00	Hand Crimp Tool - Size 16, 14-16AWG
ATT-16-01	Hand Crimp Tool - Size 16, 18-20AWG
ATT-1612-03	Hand Crimp Tool - Size 16, 20-22AWG

Looking for pricing, stock, or lifecycle information?

Click below to explore more details on WIN SOURCE:

- [⊖ View AT04-3P-SR02BLK on WIN SOURCE](#)
- [⊖ Amphenol Sine Systems Corp Information](#)

Optimize Your Supply Chain with WIN SOURCE Solutions

- ✓ Global Sourcing Solution
- ✓ Obsolete Management
- ✓ Cost Control Management
- ✓ Shortage Management
- ✓ Alternative Solution
- ✓ Excess Inventory Management