



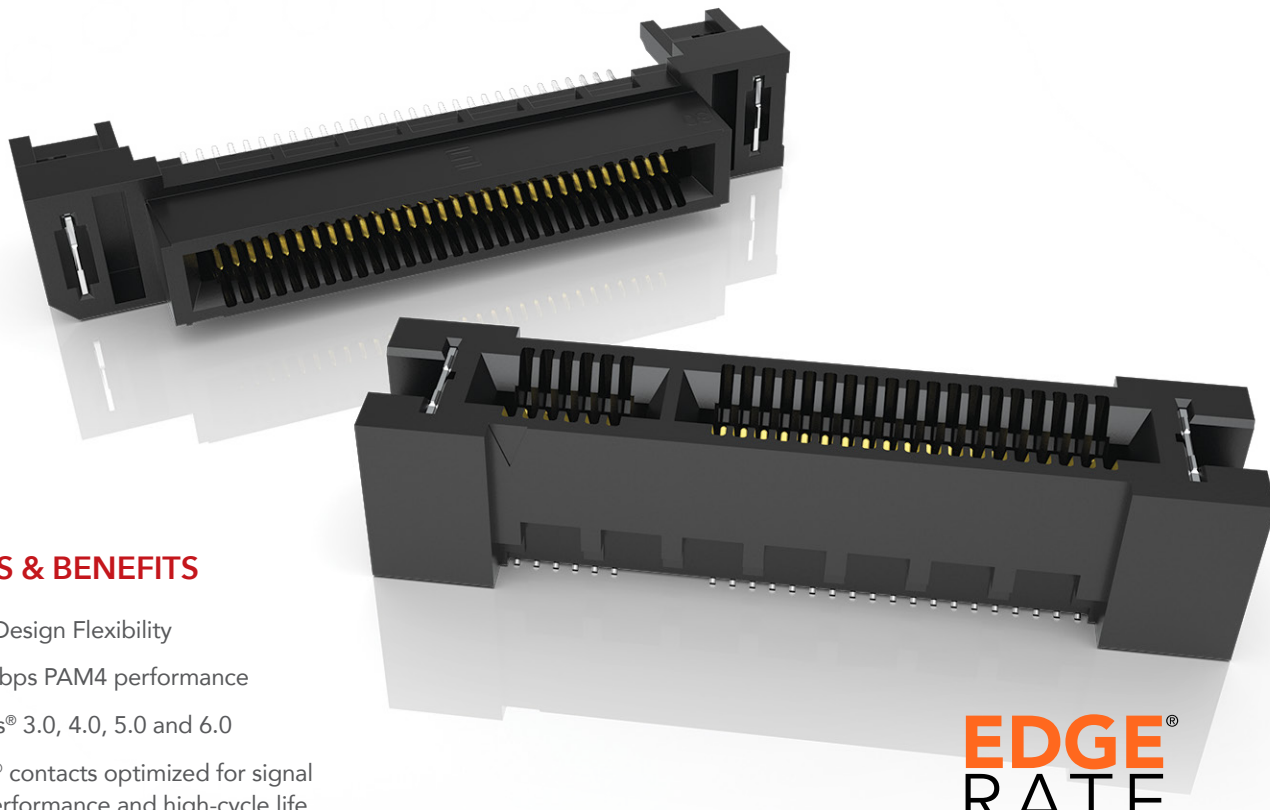
**THE DATASHEET OF  
HSEC8-120-01-S-DV-A-K-TR**



# GENERATE<sup>®</sup>

## HIGH-SPEED EDGE CARD SYSTEMS

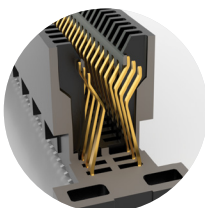
0.60 mm, 0.80 mm and 1.00 mm PITCH



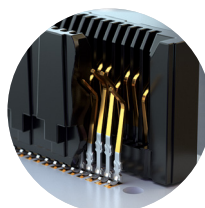
### FEATURES & BENEFITS

- Maximum Design Flexibility
- Up to 64 Gbps PAM4 performance
- PCI Express<sup>®</sup> 3.0, 4.0, 5.0 and 6.0
- Edge Rate<sup>®</sup> contacts optimized for signal integrity performance and high-cycle life
- Up to 200 positions available
- Vertical, right-angle, edge mount, pass-through orientations
- Power/signal combo, press-fit tails, rugged weld tabs, locks and latches
- Mating cable assemblies available

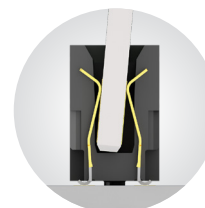
**EDGE  
RATE<sup>®</sup>**  
CONTACT



Rugged tucked beam technology (HTEC8)



Differential pair for increased speed (HSEC8-DP)



Custom designs allow for misalignment in the X-Y axes (HSEC1)

### KEY SPECIFICATIONS

| SERIES | PITCH   | TOTAL POSITIONS | INSULATOR MATERIAL | CONTACT MATERIAL | OPERATING TEMP RANGE | CURRENT RATING | VOLTAGE RATING | LEAD-FREE SOLDERABLE |
|--------|---------|-----------------|--------------------|------------------|----------------------|----------------|----------------|----------------------|
| HSEC6  | 0.60 mm | 56-168          | Black LCP          | Copper Alloy     | -55 °C to +125 °C    | 1.9 A (2 pins) | 240 VAC        | Yes                  |
| HTEC8  | 0.80 mm | 20-200          | Black LCP          | Copper Alloy     | -55 °C to +125 °C    | 3.0 A (2 pins) | 215 VAC        | Yes                  |
| HSEC8  | 0.80 mm | 18-200          | Black LCP          | BeCu             | -55 °C to +125 °C    | 2.8 A (2 pins) | 240 VAC        | Yes                  |
| HSEC1  | 1.00 mm | 20-140          | Black LCP          | Phosphor Bronze  | -55 °C to +125 °C    | 2.2 A (2 pins) | 215 VAC        | Yes                  |

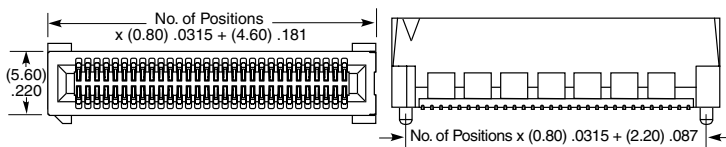
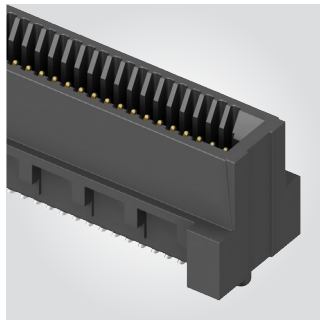
## (0.80 mm) .0315" PITCH • VERTICAL EDGE CARD SOCKET

| HSEC8 | 1 | POSITIONS PER ROW  | CARD THICKNESS   | PLATING OPTION   | DV | A | OTHER OPTIONS  | "X"R   |
|-------|---|--|--|--|----|---|--|--|
|       |   | <b>09, 10, 13, 20, 25, 30, 37, 40, 49, 50, 60, 70, 80, 100</b><br>(13, 25, 49 only available with -L or -L2 latching option; 09 only available with -L2 option; 37 only available with -L latching option) | <b>-01</b><br>= (1.60 mm)<br>.062" thick card<br><br><b>-03</b><br>= (2.36 mm)<br>.093" thick card | <b>-L</b><br>= 10 μm<br>(0.25 μm)<br>Gold on contact area,<br>Matte Tin on tail<br><br><b>-S</b><br>= 30 μm<br>(0.76 μm)<br>Gold on contact area,<br>Matte Tin on tail |    |   | <b>-K</b><br>= Polyimide Pick & Place Pad<br><br><b>-BL</b><br>= Board Locks; -01 card only (Weld tab standard)<br><br><b>-L</b><br>= Latching Option; -01 card only (13, 25, 37, 49 only) (Weld tab standard)<br><br><b>-L2</b><br>= ECDP Latching; -01 card only (09, 13, 25, 49 only) (For use with ECDP) (Weld tab standard)<br><br><b>-WT</b><br>= Weld tab | Leave blank for Tray Packaging<br><br><b>-TR</b><br>= Tape & Reel (09 - 70 only)<br><br><b>-FR</b><br>= Full Reel Tape & Reel (must order max. quantities per reel; contact Samtec for quantity breaks) (09-70 only) |

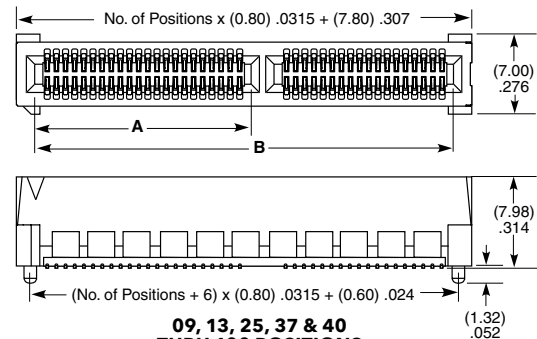
### HSEC8-DV

**Card Mates:**  
 (1.60 mm) .062" card,  
 (2.36 mm) .093" card,  
 HSC8

**Cable Mates:**  
 ECDP



10, 20, & 30 POSITIONS



09, 13, 25, 37 & 40 THRU 100 POSITIONS

### OTHER SOLUTIONS

For complete edge card system with cards and sockets, visit [samtec.com?RU8](http://samtec.com?RU8)

For a card to mate with an HSEC8 socket, visit [samtec.com?HSC8](http://samtec.com?HSC8)



| POSITIONS PER ROW | A             | B             |
|-------------------|---------------|---------------|
| 09*†              | (4.50) .177   | (11.80) .465  |
| 13*†              | (6.10) .240   | (15.00) .591  |
| 25*†              | (6.10) .240   | (24.60) .969  |
| 37†               | (18.10) .713  | (34.20) 1.346 |
| 40                | (18.90) .744  | (36.60) 1.441 |
| 49*†              | (22.90) .902  | (43.80) 1.724 |
| 50                | (22.90) .902  | (44.60) 1.756 |
| 60                | (26.90) 1.059 | (52.60) 2.071 |
| 70†               | (26.90) 1.059 | (60.60) 2.386 |
| 80†               | (26.90) 1.059 | (68.60) 2.701 |
| 100†              | (26.90) 1.059 | (84.60) 3.331 |

| CABLE   | CONNECTOR    |
|---------|--------------|
| ECDP-04 | HSEC8-109-L2 |
| ECDP-08 | HSEC8-113-L2 |
| ECDP-16 | HSEC8-125-L2 |
| ECDP-32 | HSEC8-149-L2 |

Positions where no dimensions are given do not have keying feature.

\* Mates with ECDP Series



† Available with -01 Card Only

**Note:**  
 Some sizes, styles and options are non-standard, non-returnable.

View complete specifications at: [samtec.com?HSEC8-DV](http://samtec.com?HSEC8-DV)

## Looking for pricing, stock, or lifecycle information?

Click below to explore more details on WIN SOURCE:

-  [View HSEC8-120-01-S-DV-A-K-TR on WIN SOURCE](#)
-  [Samtec Inc. Information](#)

## Optimize Your Supply Chain with WIN SOURCE Solutions

-  Global Sourcing Solution
-  Obsolete Management
-  Cost Control Management
-  Shortage Management
-  Alternative Solution
-  Excess Inventory Management