



**THE DATASHEET OF**  
**0553-1-15-15-11-27-10-0**

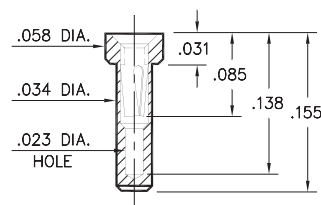


# PIN RECEPTACLES

**FOR .015" - .020" DIAMETER PINS (#11 CONTACT)  
AND .015" - .022" DIAMETER PINS (#21 CONTACT)  
(SEE SPECIFIC CONTACT RANGE ON PAGE 251)**

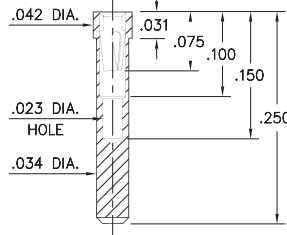
## 0548

**0548-0-15-XX-21-XX-10-0**  
Solder mount in .036 min. mounting hole  
Also available on 16mm wide carrier tape:  
1,900 parts per 13" reel  
See page 194.3 for Tape & Reel details



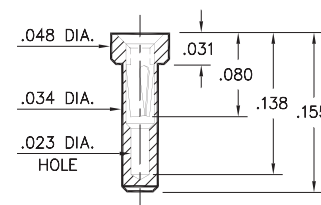
## 8975

**8975-0-15-XX-21-XX-10-0**  
Solder mount in .036 min. mounting hole  
Also available on 24mm wide carrier tape:  
1,200 parts per 13" reel  
See page 194.3 for Tape & Reel details



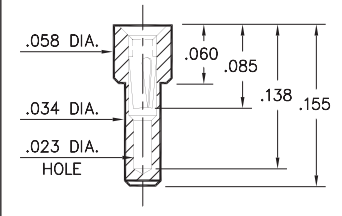
## 3016

**3016-0-15-XX-21-XX-10-0**  
Solder mount in .036 min. mounting hole  
Also available on 16mm wide carrier tape:  
1,900 parts per 13" reel  
See page 194.3 for Tape & Reel details



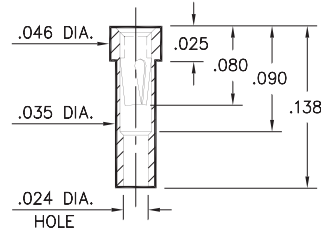
## 9548

**9548-0-15-XX-21-XX-10-0**  
Solder mount in .036 min. mounting hole



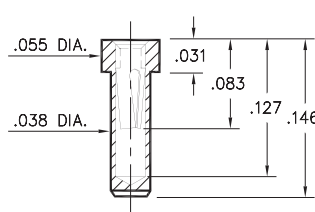
## 8637

**8637-0-15-XX-21-XX-10-0**  
Solder mount in .037 min. mounting hole  
Also available on 16mm wide carrier tape:  
2,000 parts per 13" reel  
See page 194.3 for Tape & Reel details



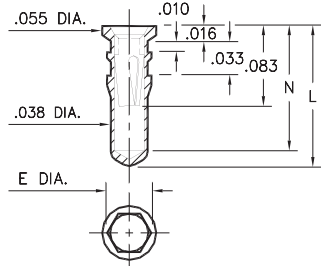
## 1407

**1407-0-15-XX-11-XX-10-0**  
Solder mount in .040 min. mounting hole  
Also available on 16mm wide carrier tape:  
1,500 parts per 13" reel  
See page 194.2 for Tape & Reel details



## 0553/4553/8553

**X553-X-15-XX-X1-XX-10-0**  
Also available on 16mm wide carrier tape:  
1,580 parts per 13" reel  
See page 194.2 for Tape & Reel details

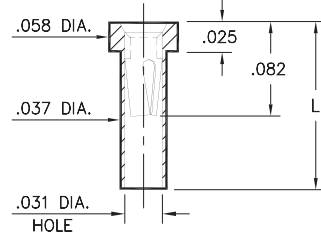


Hex press-fit in .041 plated through-hole for Part Numbers **0553-X** and **8553-0** ONLY  
Hex press-fit in .042 plated through-hole for Part Number **4553-0** ONLY

Basic Part Number	Hex Dia. E	Length L	Depth N
<b>0553-1</b>	.044	.140	.124
<b>0553-2</b>	.044	.170	.154
<b>0553-3</b>	.044	.282	.266
<b>4553-0</b>	.045	.170	.154
<b>8553-0</b>	.044	.245	.229

## 0566

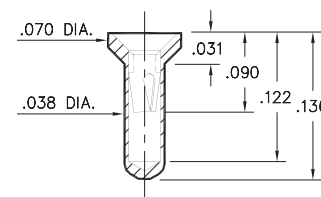
**0566-X-15-XX-21-XX-10-0**  
Solder mount in .039 min. mounting hole  
Also available on 16mm wide carrier tape:  
See chart for details  
See page 194.3 for Tape & Reel details



Basic Part Number	Length L	Parts per 13" Reel
<b>0566-1</b>	.083	3,000
<b>0566-2</b>	.138	2,100

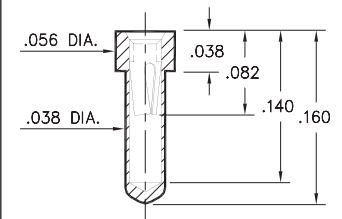
## 0442

**0442-0-15-XX-11-XX-10-0**  
Solder mount in .040 min. mounting hole



## 0554

**0554-0-15-XX-21-XX-10-0**  
Solder mount in .040 min. mounting hole  
Also available on 16mm wide carrier tape:  
1,900 parts per 13" reel  
See page 194.3 for Tape & Reel details



### SPECIFICATIONS:

**Shell Material:** Brass Alloy 360, 1/2 Hard  
**Contact Material:** Beryllium Copper Alloy 172, HT  
**Dimensions:** Inches  
**Tolerances On:** Lengths:  $\pm .005$   
Diameters:  $\pm .002$   
Angles:  $\pm 2^\circ$



### ORDER CODE: XXXX - X - XX - XX - XX - XX - XX - 0

#### BASIC PART #

#### SPECIFY SHELL FINISH:

- 01 200  $\mu$ " TIN/LEAD OVER NICKEL
- ◆ 80 200  $\mu$ " TIN OVER NICKEL (RoHS)
- ◆ 15 10  $\mu$ " GOLD OVER NICKEL (RoHS)

#### SPECIFY CONTACT FINISH:

- 02 100  $\mu$ " TIN/LEAD OVER NICKEL
- ◆ 84 100  $\mu$ " TIN OVER NICKEL (RoHS)
- ◆ 27 30  $\mu$ " GOLD OVER NICKEL (RoHS)

#### SELECT CONTACT:

**#11 or #21 CONTACT (DATA ON PAGE 251)**

(For alternate contact choices, see group A on page 248)



## Looking for pricing, stock, or lifecycle information?

Click below to explore more details on WIN SOURCE:

- ⊖ [View 0553-1-15-15-11-27-10-0 on WIN SOURCE](#)
- ⊖ [Mill-Max Manufacturing Corp. Information](#)

## Optimize Your Supply Chain with WIN SOURCE Solutions

- ✓ Global Sourcing Solution
- ✓ Obsolete Management
- ✓ Cost Control Management
- ✓ Shortage Management
- ✓ Alternative Solution
- ✓ Excess Inventory Management