

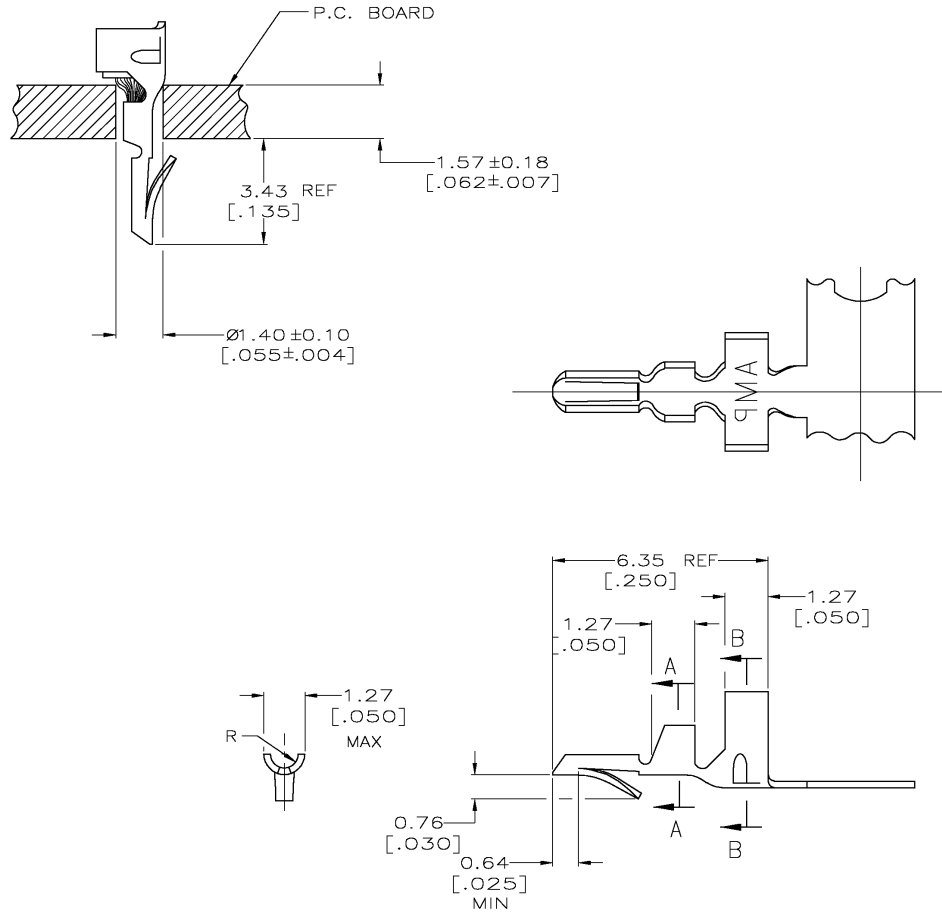


THE DATASHEET OF
3-640108-1

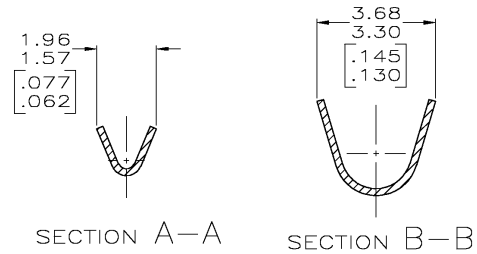


THIS DRAWING IS UNPUBLISHED. RELEASED FOR PUBLICATION
 © COPYRIGHT BY TYCO ELECTRONICS CORPORATION. ALL RIGHTS RESERVED.

LOC	DIST	REVISIONS			
P	LTN	DESCRIPTION	DATE	DMN	APVD
CM	00	N	REV PER ECN 0638-0383-03	21AUG03	SC JE



- PARTS COMPLY WITH AMP SOLDERABILITY SPEC 109-11-3.
- PARTS CAPABLE OF BEING APPLIED BY AMPOMATOR.
- WIRE RANGE: 0.12-0.4mm² (26-22 AWG).
- INSULATION RANGE: 1.52-2.54 [.060-.100] DIA
- △ 0.00508 [.000200] MIN BRIGHT TIN-LEAD.
- △ 0.00508 [.000200] MIN BRIGHT TIN.



METRIC

△7	0.20[.008] PHOS BRONZE	3-640108-1
△5	0.20[.008] PHOS BRONZE	640108-1
FINISH	MATERIAL	PART NO.

THIS DRAWING IS A CONTROLLED DOCUMENT.		DMN S. CARPENTER 21AUG2003	Tyco Electronics Corporation Harrisburg, PA 17105	
DIMENSIONS: INCHES		CHK J. ELLIS 21AUG2003	NAME MINI AMP-IN™	
TOLERANCES UNLESS OTHERWISE SPECIFIED:		APVD J. ELLIS 21AUG2003	PRODUCT SPEC	
0 PLC ± 1 PLC ± 2 PLC ± 0.13 [.005] 3 PLC ± 4 PLC ± ANGLES ±		APPLICATION SPEC 114-1016	SIZE A2	RESTRICTED TO
MATERIAL SEE TABLE	FINISH SEE TABLE	WEIGHT	EAGE CODE 00779	DRAWING NO 640108
CUSTOMER DRAWING		SCALE 10:1	SHEET 1	OF 1
		REV N		

A/C BUSINESS GROUP 3323 177-34 RALPH VESTAL

AMP 1471-9 REV 31MAR2000

H:\DMMod\ 2D

640108

Looking for pricing, stock, or lifecycle information?

Click below to explore more details on WIN SOURCE:

 [View 3-640108-1 on WIN SOURCE](#)

 [TE Connectivity](#) Information

Optimize Your Supply Chain with WIN SOURCE Solutions

-  Global Sourcing Solution
-  Obsolete Management
-  Cost Control Management
-  Shortage Management
-  Alternative Solution
-  Excess Inventory Management