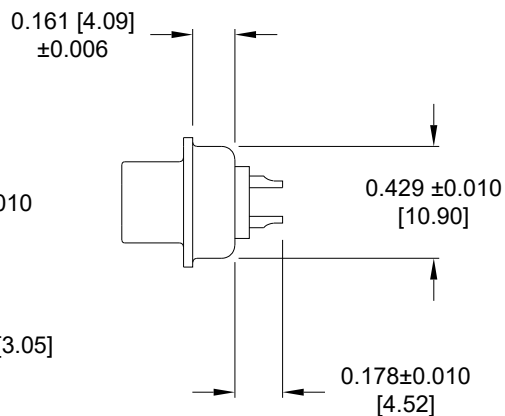
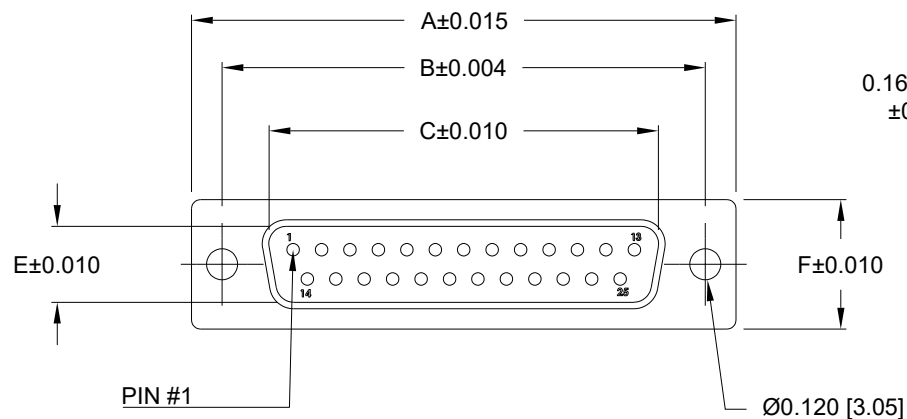
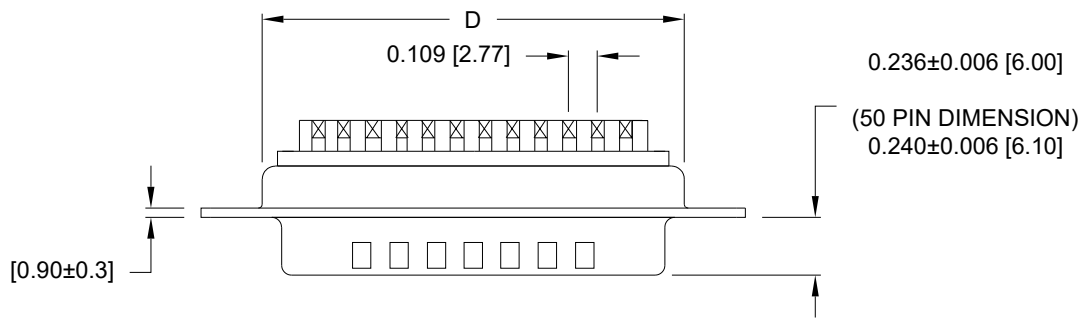




THE DATASHEET OF
171-015-102L011





SPECIFICATIONS:

MATERIALS:

SHELL: NICKEL OR TIN PLATED STEEL
 INSULATOR: PBT +30% GF, UL 94V-0, BLACK
 CONTACTS: COPPER ALLOY, GOLD PLATED

ELECTRICALS:

CURRENT RATING: 5 AMPS
 CONTACT RESISTANCE: 15 mOHMS MAX
 INSULATOR RESISTANCE: 1000 MOHMS MIN
 VOLTAGE: 500V AC FOR 1 MINUTE
 WORKING VOLTAGE: 250 VAC
 TEMPERATURE: -50°C TO +100°C

171-YYY-10YLYY1

- SERIES _____
- POSITIONS _____
- 009 _____
- 015 _____
- 025 _____
- 037 _____
- 050 _____
- GENDER _____
- 1 = MALE
- TERMINATION _____
- 0 = SOLDER CUP
- SHELL PLATING _____
- 2 = TIN (DISCONTINUED)
- 3 = NICKEL (GROUND INDENTS)
- HARDWARE OPTIONS _____
- 00 = NO HARDWARE
- 01 = .098" 4-40 CN (SOLDER SIDE)
- 02 = .236" 4-40 CN (SOLDER SIDE)
- 03 = .236" 4-40 CN (MATING SIDE)
- 05 = .237" 4-40 BOARD LOCK (.063" PCB)
- 91 = .237" 4-40 JACK SCREW / BOARD LOCK (.063" PCB)
- PLATING OPTIONS _____
- 1 = GOLD FLASH
- 2 = 30u" GOLD MATING AREA // GF TAILS

DIMENSIONS (in/mm)						
POS.	A	B	C	D	E	F
9	1.213	0.984	0.666	0.756	0.329	0.496
	30.80	24.99	16.92	19.20	8.36	12.60
15	1.541	1.312	0.994	1.091	0.329	0.496
	39.15	33.32	25.25	27.70	8.36	12.60
25	2.087	1.853	1.534	1.618	0.329	0.496
	53.00	47.04	38.96	41.10	8.36	12.60
37	2.728	2.500	2.181	2.256	0.329	0.496
	69.30	63.50	55.42	57.30	8.36	12.60
50	2.638	2.406	2.079	2.169	0.436	0.602
	67.00	61.00	52.80	55.10	11.07	15.30

WILL ACCEPT 28-20 AWG CONDUCTORS

UNITS = INCHES [MM] DO NOT SCALE FROM DRAWING

RoHS COMPLIANT



THESE DRAWINGS AND SPECIFICATIONS ARE THE PROPERTY OF NorComp AND SHALL NOT BE REPRODUCED, COPIED OR USED AS THE BASIS FOR THE MANUFACTURE OR SALE OF APPARATUS WITHOUT WRITTEN PERMISSION.

DRAWN:

J. KADEL

DATE:

07/24/2018

NorComp

SCALE:
NTS

SHEET OF
1 2

REV
16

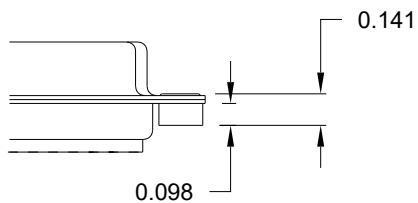
DWG NO.

171-YYY-10YLYY1

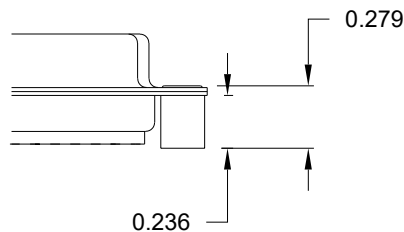
TOLERANCE:
ALL DIMENSIONS ARE ± 0.010

ALL CLINCH-NUTS ARE 4-40 INTERNAL THREADS

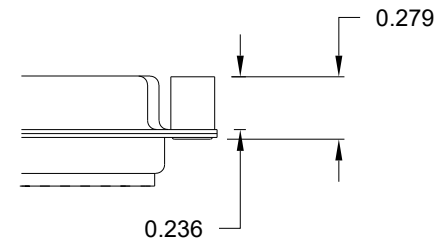
01 0.098" (SOLDER SIDE)



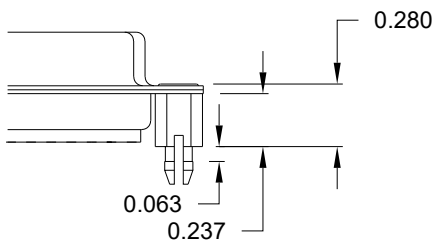
02 0.236" (SOLDER SIDE)



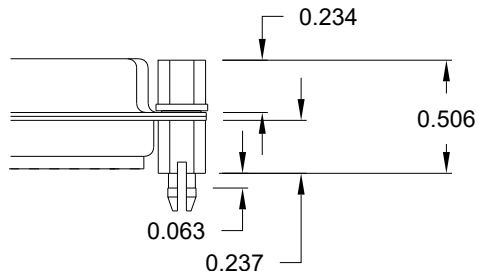
03 0.236" (MATING SIDE)



05 0.237" (SOLDER SIDE)



91 0.237" (SOLDER SIDE)



NOTE: 4-40 FEMALE SCREW LOCK IS REMOVABLE

RoHS COMPLIANT

UNITS = INCHES

DO NOT SCALE FROM DRAWING



THESE DRAWINGS AND SPECIFICATIONS ARE THE PROPERTY OF NorComp AND SHALL NOT BE REPRODUCED, COPIED OR USED AS THE BASIS FOR THE MANUFACTURE OR SALE OF APPARATUS WITHOUT WRITTEN PERMISSION.

DRAWN:

J. KADEL

DATE:

07/24/2018

NorComp

SCALE:

NTS

SHEET

OF

2

2

REV

16

DWG NO.

171-YYY-10YLYY1

Looking for pricing, stock, or lifecycle information?

Click below to explore more details on WIN SOURCE:

 [View 171-015-102L011 on WIN SOURCE](#)

 [NorComp Inc. Information](#)

Optimize Your Supply Chain with WIN SOURCE Solutions

-  Global Sourcing Solution
-  Obsolete Management
-  Cost Control Management
-  Shortage Management
-  Alternative Solution
-  Excess Inventory Management