



THE DATASHEET OF
3-1740194-2



Advanced Design Surface Mount PCB D-Sub



Tyco Electronics introduces the next generation of D-Sub connectors for surface mount assembly. Utilising key design features to ensure efficient and reliable processing, surface mounting of this industry standard interface connector becomes a reality for an increasingly wide range of applications. Available in 9 to 37 position plug and socket variants, and with a full choice of mounting hardware, this new connector sets the standard for tomorrow's interconnection requirements.

- Controlled centre of gravity for secure positioning during processing
- Fully pick and place capable without force for simplification of assembly
- Large mounting bracket improves grounding and mechanical stability
- Low 3.6mm mounting height saves valuable space between circuit boards
- 0.80µm gold plated contacts
- Hardware options for 4-40 and M3 threaded inserts or screwlocks

Specification

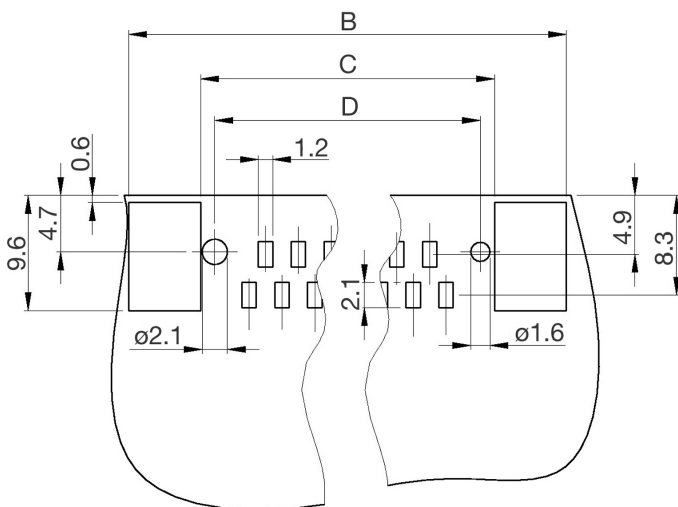
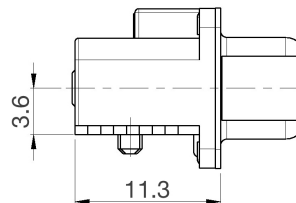
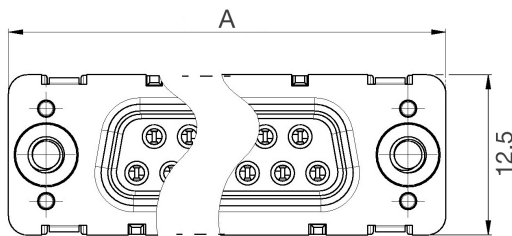
Front shell	Steel, tin plated
Housing	Black thermoplastic
Flammability	UL 94V-0
Contact area plating	0.80µm Au

All materials are RoHS compliant



Connector Range

Type	No of Ways	3mm Hole	4-40 Threaded Inserts	4-40 Female Screwlocks	M3 Threaded Inserts	M3 Female Screwlocks
Plug	9	0-1740195-2	1-1740195-2	3-1740195-2	2-1740195-2	4-1740195-2
	15	0-1740197-2	1-1740197-2	3-1740197-2	2-1740197-2	4-1740197-2
	25	0-1740199-2	1-1740199-2	3-1740199-2	2-1740199-2	4-1740199-2
	37	0-1740201-2	1-1740201-2	3-1740201-2	2-1740201-2	4-1740201-2
Socket	9	0-1740194-2	1-1740194-2	3-1740194-2	2-1740194-2	4-1740194-2
	15	0-1740196-2	1-1740196-2	3-1740196-2	2-1740196-2	4-1740196-2
	25	0-1740198-2	1-1740198-2	3-1740198-2	2-1740198-2	4-1740198-2
	37	0-1740200-2	1-1740200-2	3-1740200-2	2-1740200-2	4-1740200-2





No of Ways	Dim A	Dim B	Dim C	Dim D
9	30.80	31.00	20.10	16.60
15	39.20	39.30	28.40	24.90
25	53.05	53.05	42.15	38.65
37	69.40	69.50	58.60	55.10



All dimensions in mm

Looking for pricing, stock, or lifecycle information?

Click below to explore more details on WIN SOURCE:

-  [View 3-1740194-2 on WIN SOURCE](#)
-  [TE Connectivity Information](#)

Optimize Your Supply Chain with WIN SOURCE Solutions

-  Global Sourcing Solution
-  Obsolete Management
-  Cost Control Management
-  Shortage Management
-  Alternative Solution
-  Excess Inventory Management