



**THE DATASHEET OF**  
**170-025-173L000**



**SPECIFICATIONS:**

**ELECTRICAL:**

CURRENT RATING:	5 AMPS
CONTACT RESISTANCE:	15 mOhms MAX.
INSULATION RESISTANCE:	1,000 MOhms MIN.
OPERATING TEMPERATURE:	-50°C TO +100°C
VOLTAGE:	500 VAC FOR 1 MINUTE

**MATERIALS:**

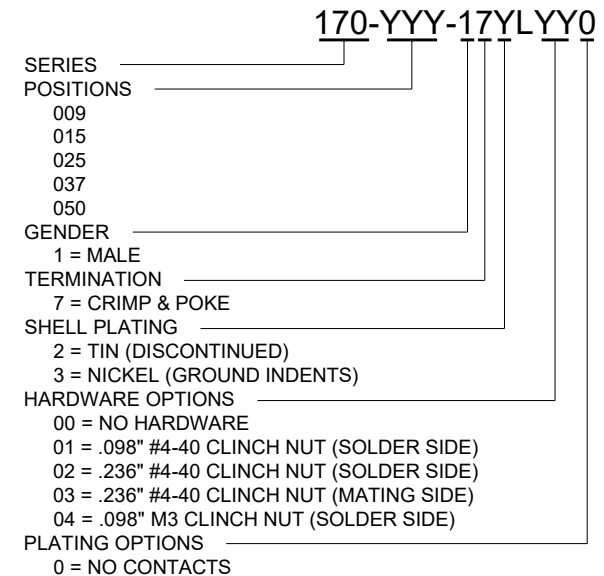
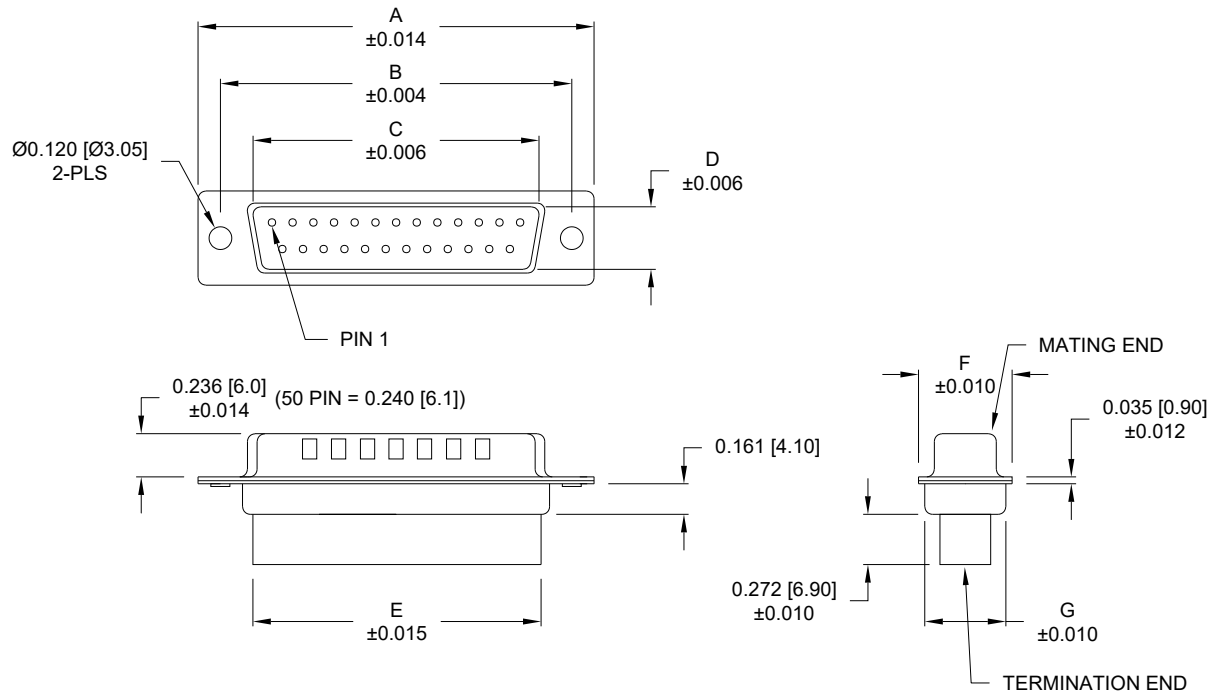
FRONT INSULATOR:	PBT-BLACK, UL94V-0 RATED
REAR INSULATOR:	PA66-BLACK, UL94V-0 RATED
PROCESS TEMP:	230°C
SHELL:	NICKEL PLATED STEEL

**COMPATIBLE WITH NORCOMP CONTACT PART NUMBERS BELOW:**

170-001-170L001	170-101-170L001
170-001-170L002	170-101-170L002
170-001-170L003	170-101-170L003
170-201-170L003	

**\*\*NOTE: CONTACTS MUST BE PURCHASED SEPARATELY\*\***

**\*\*NOTE: ASSEMBLY INSTRUCTION ON PAGE 3\*\***



**DIMENSIONS**

No. OF PINS	UNITS	A	B	C	D	E	F	G
		9	inch	1.213	0.984	0.666	0.329	0.618
	mm	30.80	24.99	16.92	8.36	15.70	12.60	10.90
15	inch	1.541	1.312	0.994	0.329	0.933	0.496	0.429
	mm	39.15	33.32	25.25	8.36	23.70	12.60	10.90
25	inch	2.087	1.852	1.534	0.329	1.496	0.496	0.429
	mm	53.00	47.04	38.96	8.36	38.00	12.60	10.90
37	inch	2.728	2.500	2.182	0.329	2.142	0.496	0.429
	mm	69.30	63.50	55.42	8.36	54.40	12.60	10.90
50	inch	2.638	2.402	2.079	0.436	2.039	0.602	0.535
	mm	67.00	61.00	52.80	11.07	51.80	15.30	13.60

UNITS = inch [mm]

**DO NOT SCALE FROM DRAWING**



THESE DRAWINGS AND SPECIFICATIONS ARE THE PROPERTY OF NorComp AND SHALL NOT BE REPRODUCED, COPIED OR USED AS THE BASIS FOR THE MANUFACTURE OR SALE OF APPARATUS WITHOUT WRITTEN PERMISSION.

DRAWN:  
P. JENKINS

DATE:  
08/18/1998

**NorComp**

SCALE:  
NTS

SHEET OF  
1 3

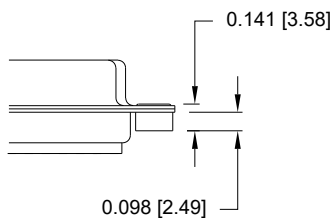
REV  
20

DWG NO.

170-YYY-17YLYY0

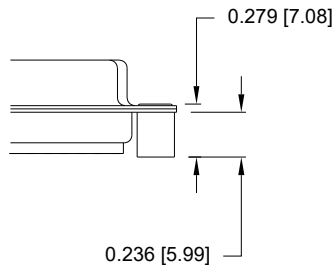
**TOLERANCE:**  
ALL DIMENSIONS ARE  $\pm 0.010$

01 ..... 0.065" (SOLDER SIDE)



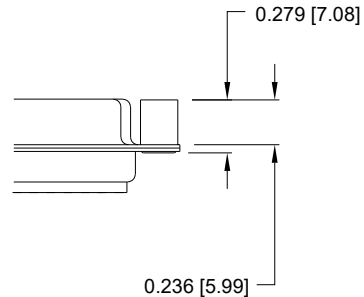
#4-40 INTERNAL THREADS

02 ..... 0.236" (SOLDER SIDE)



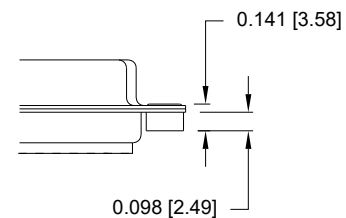
#4-40 INTERNAL THREADS

03 ..... 0.236" (MATING SIDE)



#4-40 INTERNAL THREADS

04 ..... 0.065" (SOLDER SIDE)



M3 INTERNAL THREADS

RoHS COMPLIANT

UNITS = inch [mm]

DO NOT SCALE FROM DRAWING



THESE DRAWINGS AND SPECIFICATIONS ARE THE PROPERTY OF NorComp AND SHALL NOT BE REPRODUCED, COPIED OR USED AS THE BASIS FOR THE MANUFACTURE OR SALE OF APPARATUS WITHOUT WRITTEN PERMISSION.

DRAWN:  
**P. JENKINS**

DATE:  
**08/18/1998**

**NorComp**

SCALE:  
NTS

SHEET OF  
2 3

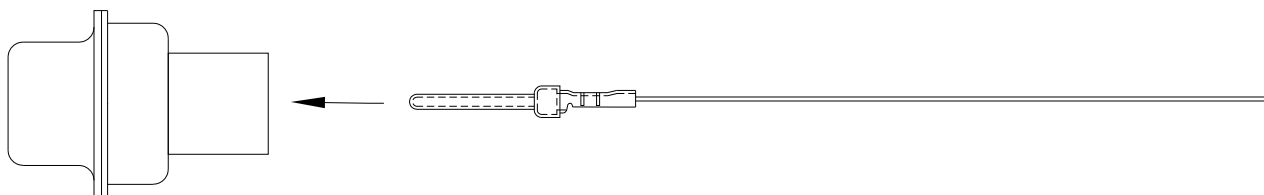
REV  
20

DWG NO.

**170-YYY-17YLYY0**

## ASSEMBLY INSTRUCTIONS:

1. CHOOSE CONTACT THAT IS COMPATIBLE
  - a. SHOWN ON PAGE 1
2. USE APPROPRIATE CRIMP TOOL
  - a. 170-701-170-000 (STAMPED CRIMP HAND TOOL)
  - b. 170-702-170-000 (MACHINED CRIMP HAND TOOL)
3. FOLLOW CRIMP HAND TOOL INSTRUCTIONS
  - a. FOUND ON NORCOMP WEBSITE ON 170 SERIES CONTACTS PRODUCT PAGE
  - b. <https://www.norcomp.net/series/170-series-contacts>
4. ONCE CONTACT IS CRIMPED INSERT INTO HOUSING AS SHOWN BELOW:



RoHS COMPLIANT

UNITS = inch [mm]

DO NOT SCALE FROM DRAWING



THESE DRAWINGS AND SPECIFICATIONS ARE THE PROPERTY OF NorComp AND SHALL NOT BE REPRODUCED, COPIED OR USED AS THE BASIS FOR THE MANUFACTURE OR SALE OF APPARATUS WITHOUT WRITTEN PERMISSION.

DRAWN:  
P. JENKINS

DATE:  
08/18/1998

**NorComp**

SCALE:  
NTS

SHEET 3 OF 3

REV  
20

DWG NO.

170-YYY-17YLYY0

## Looking for pricing, stock, or lifecycle information?

Click below to explore more details on WIN SOURCE:

 [View 170-025-173L000 on WIN SOURCE](#)

 [NorComp Inc. Information](#)

## Optimize Your Supply Chain with WIN SOURCE Solutions

-  Global Sourcing Solution
-  Obsolete Management
-  Cost Control Management
-  Shortage Management
-  Alternative Solution
-  Excess Inventory Management