

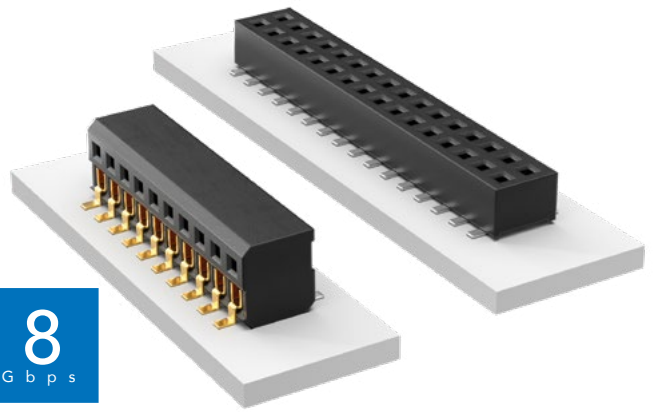


**THE DATASHEET OF  
CLP-106-02-F-D-P**



# LOW PROFILE DUAL WIPE SOCKET

8  
Gbps



(1.27 mm) .050" PITCH • CLP SERIES

## CLP

Mates:  
FTSH, FTS, FW



## SPECIFICATIONS

**Insulator Material:**  
Black Liquid Crystal Polymer  
**Contact Material:**  
Phosphor Bronze  
**Plating:**  
Sn or Au over  
50 μ" (1.27 μm) Ni  
**Current Rating (CLP/FTSH):**  
3.4 A per pin  
(2 pins powered)  
**Voltage Rating:**  
280 VAC/395 VDC  
**Operating Temp Range:**  
-55 °C to +125 °C  
**Insertion Depth:**  
Top Entry =  
(1.40 mm) .055" minimum  
Bottom Entry =  
(2.41 mm) .095" minimum  
plus board thickness  
DH Entry =  
(2.31 mm) .091" to (2.67 mm) .105"  
**Max Cycles:**  
100 with 10 μ" (0.25 μm) Au

## PROCESSING

**Lead-Free Solderable:**  
Yes  
**SMT Lead Coplanarity:**  
(0.10 mm) .004" max (02-35)  
(0.15 mm) .006" max (36-50)\*  
\*(.004" stencil solution  
may be available; contact  
ipg@samtec.com)

02 thru 50

**-F**  
= Gold flash  
on contact,  
Matte Tin  
on tail

**-L**  
= 10 μ"  
(0.25 μm)  
Gold on  
contact,  
Matte Tin  
on tail

**-G**  
= 10 μ"  
(0.25 μm)  
Gold  
(-D only)

**-D**  
= Double  
Row

**-DH**  
= Double  
Horizontal  
(Requires  
FTSH-04  
lead style)

**-BE**  
= Bottom Entry  
(Required for bottom  
entry applications)

**-A**  
= Alignment Pin  
(Not available with -PA option)  
(05, 06, 07, 08, 10, 12, 15,  
20, 25, 30, 40 positions only)  
(-DH option and other sizes.  
Contact Samtec.)

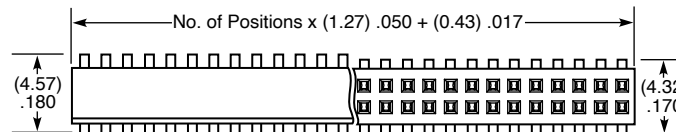
**-K**  
= (4.00 mm) .157" DIA  
Polyimide film Pick & Place Pad

**-P**  
= Pick & Place Pad  
(5 positions min. -D only)  
(Not always necessary  
for auto placement.  
See Flex Processing.)

**-PA**  
= Pick & Place Pad  
with Alignment Pin  
(-D only)  
(Not available with -A option)

**-TR**  
= Tape & Reel

**-FR**  
= Full Reel Tape & Reel  
(must order maximum  
quantity per reel;  
contact Samtec for  
quantity breaks)



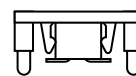
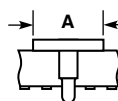
## ALSO AVAILABLE

MOQ Required

Single row  
Other platings



PIN/ROW	A
04-15	(3.56) .140
16-50	(7.11) .280



-PA OPTION



-P OPTION

## Notes:


Severe Environment  
Testing qualified; aligns  
with MIL-DTL-55302.  
Visit samtec.com/set

If odd pins/row, alignment pins are on  
middle position on centerline of the part.  
If even pins/row, then alignment pins are  
between middle two positions.

Some lengths, styles and  
options are non-standard,  
non-returnable.

## Looking for pricing, stock, or lifecycle information?

Click below to explore more details on WIN SOURCE:

 [View CLP-106-02-F-D-P on WIN SOURCE](#)

 [Samtec Inc. Information](#)

## Optimize Your Supply Chain with WIN SOURCE Solutions

-  Global Sourcing Solution
-  Obsolete Management
-  Cost Control Management
-  Shortage Management
-  Alternative Solution
-  Excess Inventory Management