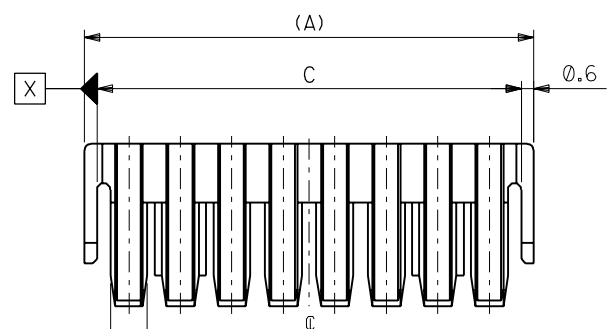
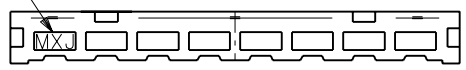
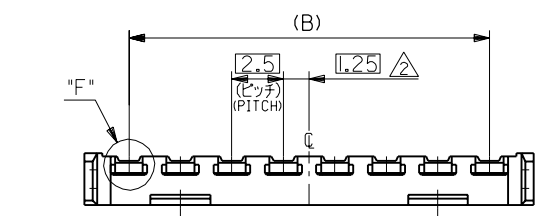


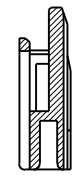
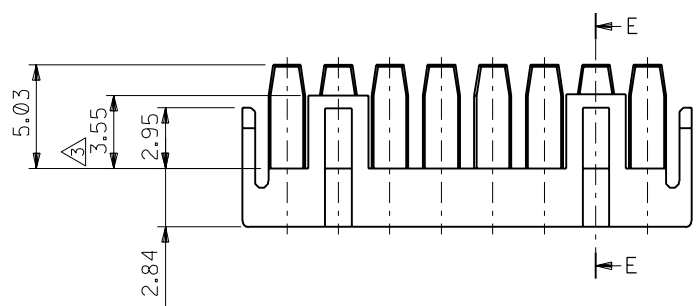
トレードマーク
TRADE MARK



⊕ 0.3 X 1.8



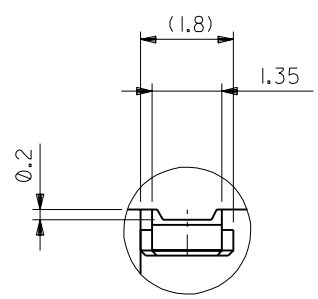
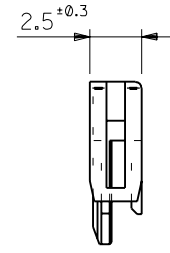
⊕ 0.3 X



断面 E-E
SECT. E-E
(8極以上)
(OVER 8CKT.)



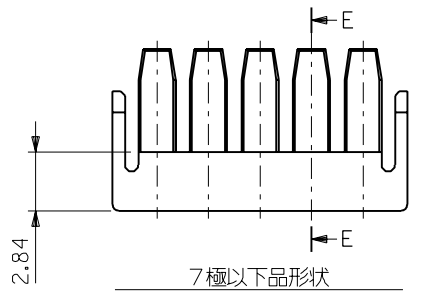
断面 E-E
SECT. E-E
(7極以下)
(UNDER 7CKT.)



拡大図 "F"
DETAIL F

注記 NOTES

1. 適合ターミナル : 50752-8*00
APPLICABLE TERMINAL : 50752-8*00
適合ハウジング : 51163-**-00
APPLICABLE HOUSING : 51163-**-00
2. 偶数極の製品に適用。
APPLY EVEN CIRCUIT PRODUCTS.
3. 8~15極品に適用。
APPLY 8~15 CKT PRODUCTS.



7極以下品形状
SHAPE OF UNDER 7CKT.

12.5	38.1	35	39.3	51164-1505	15
↑	35.6	32.5	36.8	↑ -1405	14
	33.1	30	34.3	↑ -1305	13
	30.6	27.5	31.8	↑ -1205	12
	28.1	25	29.3	↑ -1105	11
	25.6	22.5	26.8	↑ -1005	10
	23.1	20	24.3	↑ -0905	9
↓	20.6	17.5	21.8	↓ -0805	8
	18.1	15	19.3	↓ -0705	7
	15.6	12.5	16.8	↓ -0605	6
	13.1	10	14.3	↓ -0505	5
	10.6	7.5	11.8	↓ -0405	4
	8.1	5	9.3	↓ -0305	3
	5.6	2.5	6.8	↓ 51164-0205	2
D	C	(B)	(A)	ENG. NO.	極数 NO. OF CKT.

:MM DIMENSIONS IN METRIC DO NOT SCALE DRAWING

角度 ANGLE	±3°				
30 以上 OVER	+0.3				
10 以上 OVER	+0.25				
30 未満 UNDER					
10 未満 UNDER	+0.2				
一般公差 GENERAL TOLERANCES	LTR	変更内容 REVISION RECORD	DR. CHK.	日付 DATE	尺度 SCALE
	0	新規作成 (JC80469)	S.A.T.	'97/11/27	4 : 1

材料 MATERIAL	PBTP, UL94V-0 (灰色 GRAY)
仕上げ FINISH	—
適用電線範囲 WIRE RANGE	—
被覆外径 INS. RANGE	—
DRAWN BY '97/11/26	CHK'D BY '97/11/27
S. AIHARA	T. ITO
APP'D BY '97/11/27	尺度
M. FUKUSHIMA	SCALE 4 : 1

MOLEX-JAPAN CO., LTD. 日本モレックス株式会社	
REVISE ONLY ON CAD SYSTEM	
TITLE 名称 2.5 WIRE TO BOARD CONN. RETAINER	
DWG. NO.	REV
SD-51164-**-05	0

Looking for pricing, stock, or lifecycle information?

Click below to explore more details on WIN SOURCE:

 [View 0511640205 on WIN SOURCE](#)

 [Molex, LLC Information](#)

Optimize Your Supply Chain with WIN SOURCE Solutions

-  Global Sourcing Solution
-  Obsolete Management
-  Cost Control Management
-  Shortage Management
-  Alternative Solution
-  Excess Inventory Management