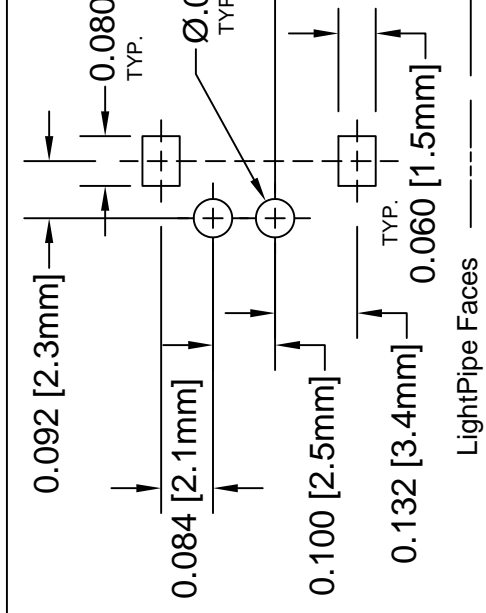
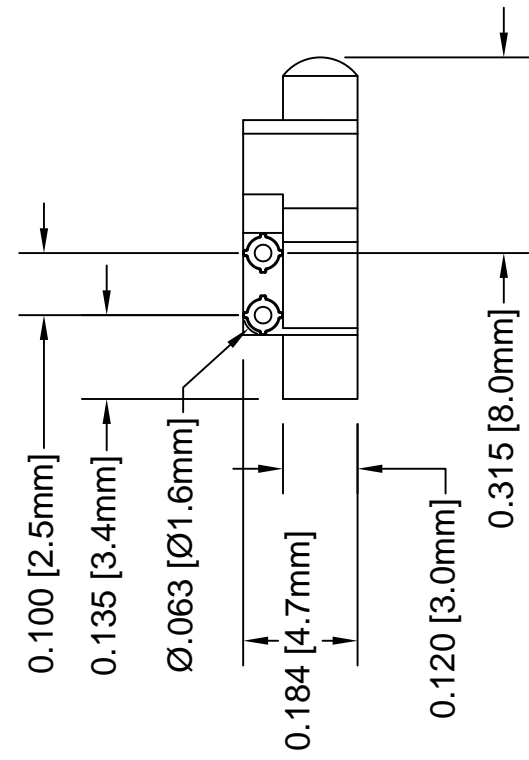
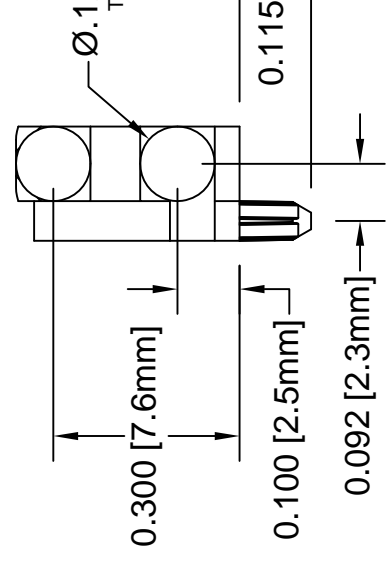
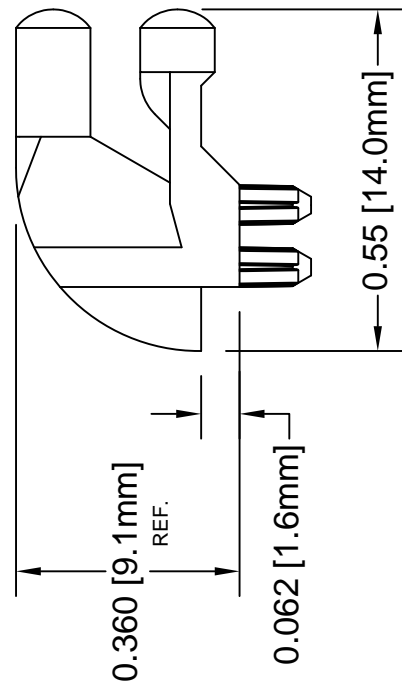




THE DATASHEET OF LP-230



REV.	
B	Engineering Update
C	Added Color Options



Recommended Mounting Hole

2. MATERIAL: POLYCARBONATE 94V-0 CLEAR.
1. GENERAL SPECIFICATIONS: BIVAR MOLDED COMPONENT SPECIFICATION BV00-E101.

STANDARD TOLERAN (UNLESS OTHERWISE SPECI		ANGUI	
DECIMALS	X	°	X°
	± .1		
	.XX ± .01		
	.XXX ± .005		
DESIGNED:	Michael Chen	DATE:	10/0
CHECKED:	S. Irving	DATE:	10/0

OTHER AVAILABLE COLORS
 * SEE TABLE FOR ORDERING INFORMATION

REV.	SEE SHEET #1


LP-230

RIGID LIGHT PIPE
 SERIES

COLOR	Order Code
BLUE	BE
BLACK	BK
GREEN	GN
GRAY	GY
RED	RD
YELLOW	YW


NOTE: LEAVE ORDER CODE BLANK
 IF NO COLOR IS DESIRED.

3. PARTS ARE DYED TO COLOR UPON REQUEST.

STANDARD TOLERANCES (UNLESS OTHERWISE SPECIFIED)	
DECIMALS	ANGU
DESIGNED:	
K. Aukshunas	DATE: 01/2
CHECKED:	DATE:
J. Chiang	01/2

Looking for pricing, stock, or lifecycle information?

Click below to explore more details on WIN SOURCE:

 [View LP-230 on WIN SOURCE](#)

 [Bivar Inc. Information](#)

Optimize Your Supply Chain with WIN SOURCE Solutions

-  Global Sourcing Solution
-  Obsolete Management
-  Cost Control Management
-  Shortage Management
-  Alternative Solution
-  Excess Inventory Management