



# THE DATASHEET OF CX2047LANLT



**CX2047LANL**

- Balun Transformer
- 1:4CT Impedance
- Surface Mount

**ELECTRICAL SPECS**

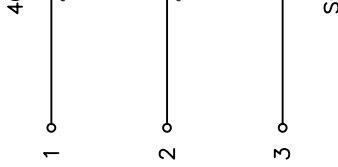
RETURN LOSS:

FREQUENCY	RETURN LOSS
.5 MHz	-17 dB MIN
1 MHz	-20 dB MIN
10 MHz	-29 dB MIN
50 MHz	-28 dB MIN
70 MHz	-27 dB MIN

INSERTION LOSS:

FREQUENCY	ATTENUATION
100 KHz	-4 dB MAX
.5 MHz	-1 dB MAX
1.5-100 MHz	-0.5 dB MAX
300 MHz	-1 dB MAX

- NOTES: UNLESS OTHERWISE SPECIFIED
1. OPERATING TEMPERATURE: -40°C TO +85°C
  2. STORAGE TEMPERATURE: -50°C TO +125°C
  3. JEDEC MOISTURE: LEVEL 1.
  4. DIMENSIONS ARE IN INCHES WITH THE FOLLOWING TOLERANCE:  
.XX= ±.01  
.XXX= ±.005
  5. OPTIONAL TAPE & REEL PACKAGING CAN BE ORDERED BY ADDING A "T" SUFFIX TO THE PART NUMBER(EX: CX2047LANLT)
  6. ROHS COMPLIANT



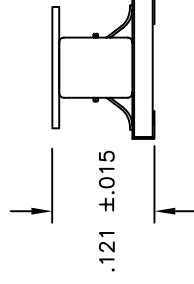
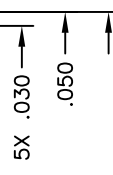
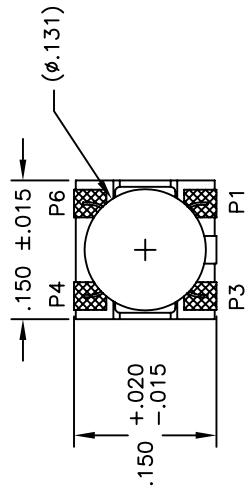
© Copyright, 2014. Pulse Electronics Corp. All rights reserved. Drawing specifications subject to change without notice. (02/14/14)

PULSE CONFIDENTIAL  
&  
PROPRIETARY

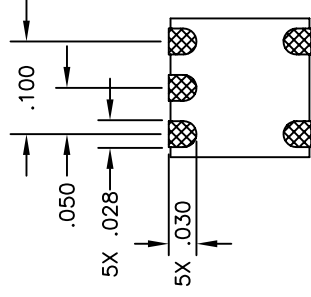
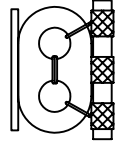
PRODUCT SPECIFICATION:

XFMR, RF, SGL, RAC, 1:4CT, 0.5-300MHZ

**MECHANICAL SPECIFICATIONS:**



SUGGESTED



© Copyright, 2014. Pulse Electronics Corp. All rights reserved. Drawing specifications subject to change without notice. (02/14/14)

PULSE CONFIDENTIAL  
&  
PROPRIETARY

PRODUCT SPECIFICATION:

XFMR, RF, SGL, RAC, 1:4CT, 0.5–300MHZ

## Looking for pricing, stock, or lifecycle information?

Click below to explore more details on WIN SOURCE:

-  [View CX2047LANLT on WIN SOURCE](#)
-  [Pulse Information](#)

## Optimize Your Supply Chain with WIN SOURCE Solutions

-  Global Sourcing Solution
-  Obsolete Management
-  Cost Control Management
-  Shortage Management
-  Alternative Solution
-  Excess Inventory Management