



THE DATASHEET OF CX2049LANL



CX2049LANL

- Balun Transformer
- 1:8CT Impedance
- Surface Mount

ELECTRICAL SPECS

RETURN LOSS:

FREQUENCY	RETURN LOSS(S11)
1.0 MHz	-9.0 dB MIN
1.2 MHz	-10 dB MIN
5.0 MHz	-18 dB MIN
12 MHz	-23 dB MIN
30 MHz	-20 dB MIN

INSERTION LOSS:

FREQUENCY	ATTENUATION(S21)
0.25 MHz	-3.0 dB MAX
0.36 MHz	-2.0 dB MAX
1.2 MHz	-1.0 dB MAX
2.0 MHz	-0.8 dB MAX
110 MHz	-0.8 dB MAX

- NOTES: UNLESS OTHERWISE SPECIFIED
1. OPERATING TEMPERATURE: -40°C TO +85°C
 2. STORAGE TEMPERATURE: -50°C TO +125°C
 3. JEDEC MOISTURE: LEVEL 1.
 4. DIMENSIONS ARE IN INCHES WITH THE FOLLOWING TOLERANCE:
.XX= ±.01
.XXX= ±.005
 5. OPTIONAL TAPE & REEL PACKAGING CAN BE ORDERED BY ADDING A "T" SUFFIX TO THE PART NUMBER(EX: CX2049LANLT)
 6. ROHS COMPLIANT



6 0

4 0

S

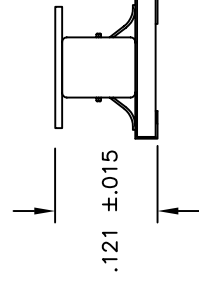
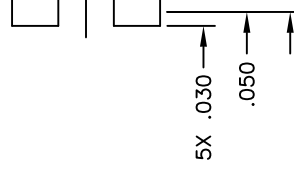
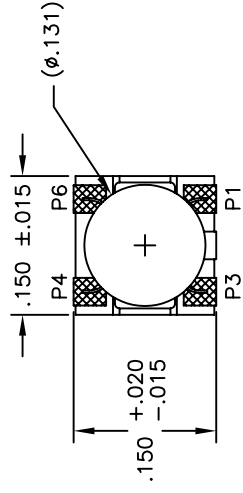
© Copyright, 2014. Pulse Electronics Corp. All rights reserved. Drawing specifications subject to change without notice. (02/14/14)

PULSE CONFIDENTIAL
&
PROPRIETARY

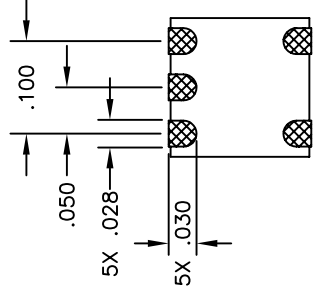
PRODUCT SPECIFICATION:

XFMR, RF, SGL, RAC, 1:8CT, 0.25-500MHZ

MECHANICAL SPECIFICATIONS:



SUGGESTED



© Copyright, 2014. Pulse Electronics Corp. All rights reserved. Drawing specifications subject to change without notice. (02/14/1



PULSE CONFIDENTIAL
&
PROPRIETARY

PRODUCT SPECIFICATION:

XFMR, RF, SGL, RAC, 1:8CT, 0.25-500MHZ

Looking for pricing, stock, or lifecycle information?

Click below to explore more details on WIN SOURCE:

-  [View CX2049LANL on WIN SOURCE](#)
-  [Pulse Information](#)

Optimize Your Supply Chain with WIN SOURCE Solutions

-  Global Sourcing Solution
-  Obsolete Management
-  Cost Control Management
-  Shortage Management
-  Alternative Solution
-  Excess Inventory Management