

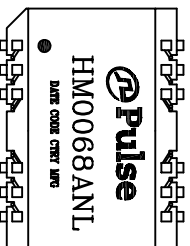


# THE DATASHEET OF HM0068ANLT



WITH FLAMMABILITY

-125°C



AT 245°C REFLOW PROFILE

MOISTURE SENSITIVE

MINIMUM THROUGH REFLOW SOLDER

ADD A "T" SUFFIX



IT BECOMES HXXXXXXXXNLT).



FINAL OUTLINE

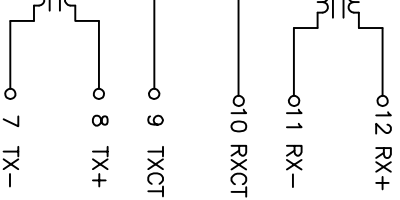
rights reserved. Pulse confidential & proprietary. (09/05/16)

QA DRAWING	PS DRAWING	SHEET	PART NO.	DATASHEET REV.
HM0068ANL-10	PS-2288.001-A	1 OF 3	HM0068ANL	E

ELECTRICAL CHARACTERISTICS AT +25°C UNLESS OTHER SPECIFIED  
MEETS IEEE 802.3 SPECIFICATION

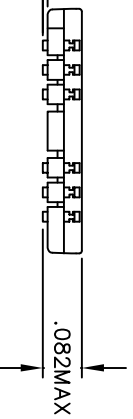
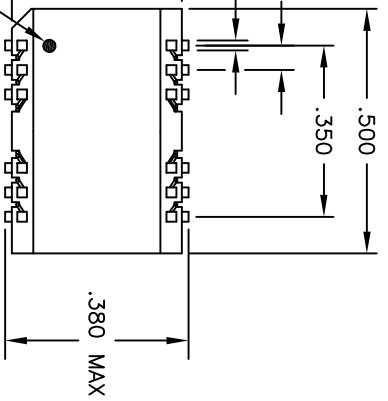
PARAMETER	SPECIFICATIONS	
OPERATING TEMPERATURE	-40°C TO +105°C	
TURNS RATIO	1 : 1 ±2%	
POLARITY	PER SCHEMATIC	
INSERTION LOSS	100 KHz	1-125 MHz
	-1.2 DB MAX	-0.2-0.002*f <sup>1.4</sup> DB MAX
RETURN LOSS	.1-40 MHz	40-100 MHz
(Z OUT = 100 OHM ±15%)	-16 DB MIN	-10+20*LOG <sub>10</sub> (f/80 MHz) DB MIN
INDUCTANCE (OCL) (MEDIA SIDE)	350 uH MIN (MEASURED AT 100 KHz, 100 mVRMS) (AND WITH 8 MA DC BIAS)	
CROSSTALK, ADJACENT CHANNELS	1 MHz	10-100 MHz
	-50 DB MIN	-55+22*LOG <sub>10</sub> (f/10) DB MIN
	2 MHz	30-200 MHz
COMMON MODE REJECTION RATIO	-42 DB MIN	-15+20*LOG <sub>10</sub> (f/200) DB MIN
DC RESISTANCE, 1/2 WINDING	.65 OHMS MAX	
DC RESISTANCE IMBALANCE	±.065 OHMS MAX (CENTER TAP SYMMETRY)	
INPUT - OUTPUT ISOLATION	1500 VRMS MIN @ 60 SECONDS	

NOTE: f IS FREQUENCY IN MHZ.



rights reserved. Pulse confidential & proprietary. (09/05/16)

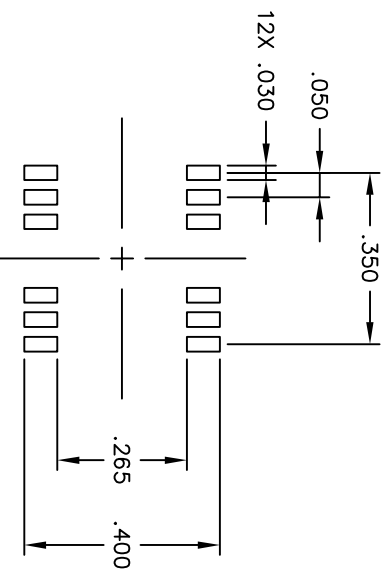
A DRAWING	PS DRAWING	SHEET	PART NO.	DATASHEET REV.
0068ANL-10	PS-2288.001-A	2 OF 3	HM0068ANL	E



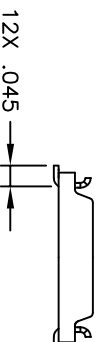
(SEE LOWEST  
SITTING PLANE)

DRAWING

rights reserved. Pulse confidential & proprietary. (09/05/16)



SUGGESTED LAND PATTERN



PS DRAWING  
HM0068ANL-10

PS DRAWING  
PS-2288.001-A



SHEET  
3 OF 3

PART NO.  
HM0068ANL

DATASHEET REV.  
E

## Looking for pricing, stock, or lifecycle information?

Click below to explore more details on WIN SOURCE:

-  [View HM0068ANLT on WIN SOURCE](#)
-  [Pulse Information](#)

## Optimize Your Supply Chain with WIN SOURCE Solutions

-  Global Sourcing Solution
-  Obsolete Management
-  Cost Control Management
-  Shortage Management
-  Alternative Solution
-  Excess Inventory Management