



THE DATASHEET OF DC1313A



DESCRIPTION

Demonstration circuit 1313 is a monolithic step-down DC/DC switching regulator featuring LT1912. The demo board is designed for 5V output from a 6.3V to 36V input. The wide input range of the LT1912 allows a variety of input sources. The typical sources are automotive batteries, wall adaptors and industrial supplies.


The current mode control scheme creates fast transient response and good loop stability. The gate drive of the internal switch is boosted to a voltage that is higher than the V_{in} to ensure saturation of the switch. The LT1912's integrated boost diode reduces the parts count. The RUN/SS pin can be used to set the part in micropower shutdown mode, reducing the supply current to less than 1 μ A. The RUN/SS pin can also be used to program soft start. In this mode, the RUN/SS pin is driven through an

external RC filter to create a voltage ramp on this pin. The soft start function reduces the input current surge during start-up.

The LT1912 datasheet gives a complete description of the part, operation and application information. The datasheet must be read in conjunction with this quick start guide for demo circuit 1313.

Note: It is best to ground the SYNC pin if the SYNC function is not being used.

Design files for this circuit board are available. Call the LTC factory.

 , LTC and LT are registered trademarks of Linear Technology Corporation. ThinSOT and PowerPath are trademarks of Linear Technology Corporation.

Performance Summary for Step-down Switching Regulator ($T_A = 25^{\circ}\text{C}$)

PARAMETER FOR BUCK REGULATOR	CONDITION	VALUE
Minimum Input Voltage		6.3V
Maximum Input Voltage		36V
Output Voltage V_{OUT}		5V +/- 4%
Maximum Output Current		2A
Typical Switching Frequency		500kHz

QUICK START PROCEDURE

Demonstration circuit 1313 is easy to set up to evaluate the performance of the LT1912. Refer to Figure 1 for proper measurement equipment setup and follow the procedure below:

NOTE. When measuring the input or output voltage ripple, care must be taken to avoid a long ground lead on the oscilloscope probe. Measure the input or output voltage ripple by touching the probe tip directly across the V_{in} or V_{out} and GND terminals. See Figure 2 for proper scope probe technique.

1. Place JP1 on the RUN position.

2. With power off, connect the input power supply to V_{in} and GND.

3. Turn on the power at the input.

4. Check for the proper output voltage.

NOTE. If there is no output, temporarily disconnect the load to make sure that the load is not set too high.

5. Once the proper output voltage is established, adjust the load within the operating range and observe the output voltage regulation, ripple voltage, efficiency and other parameters.

- An external clock can be added to the SYNC pin when SYNC function is used. See synchronization section in the datasheet for details.

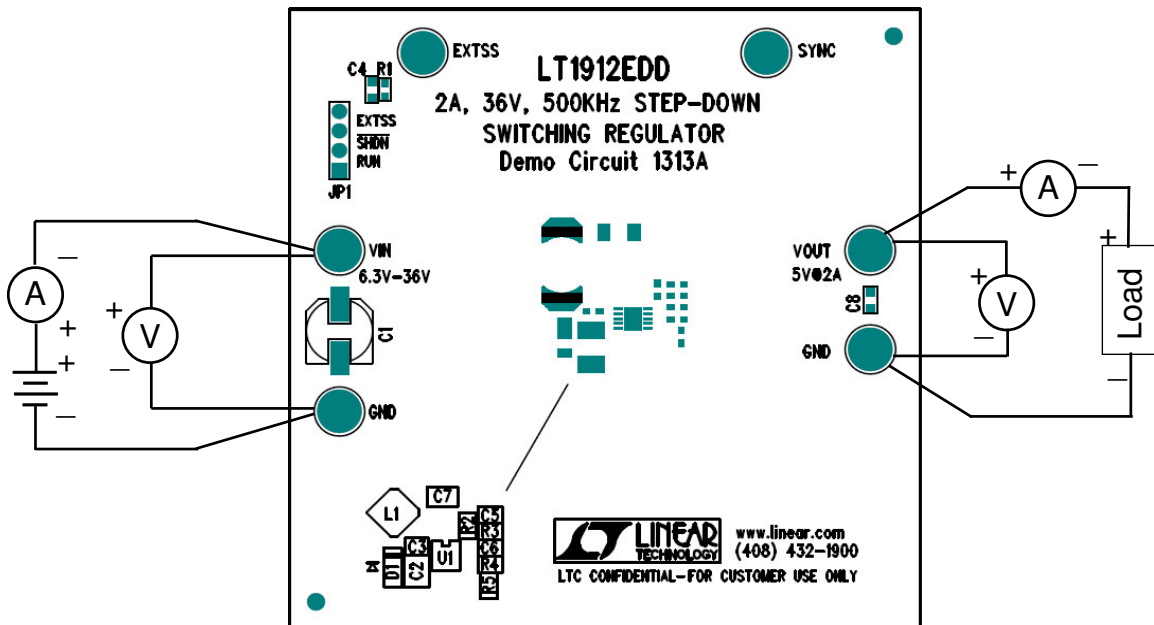


Figure 1. Proper Measurement Equipment Setup

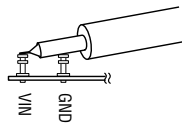
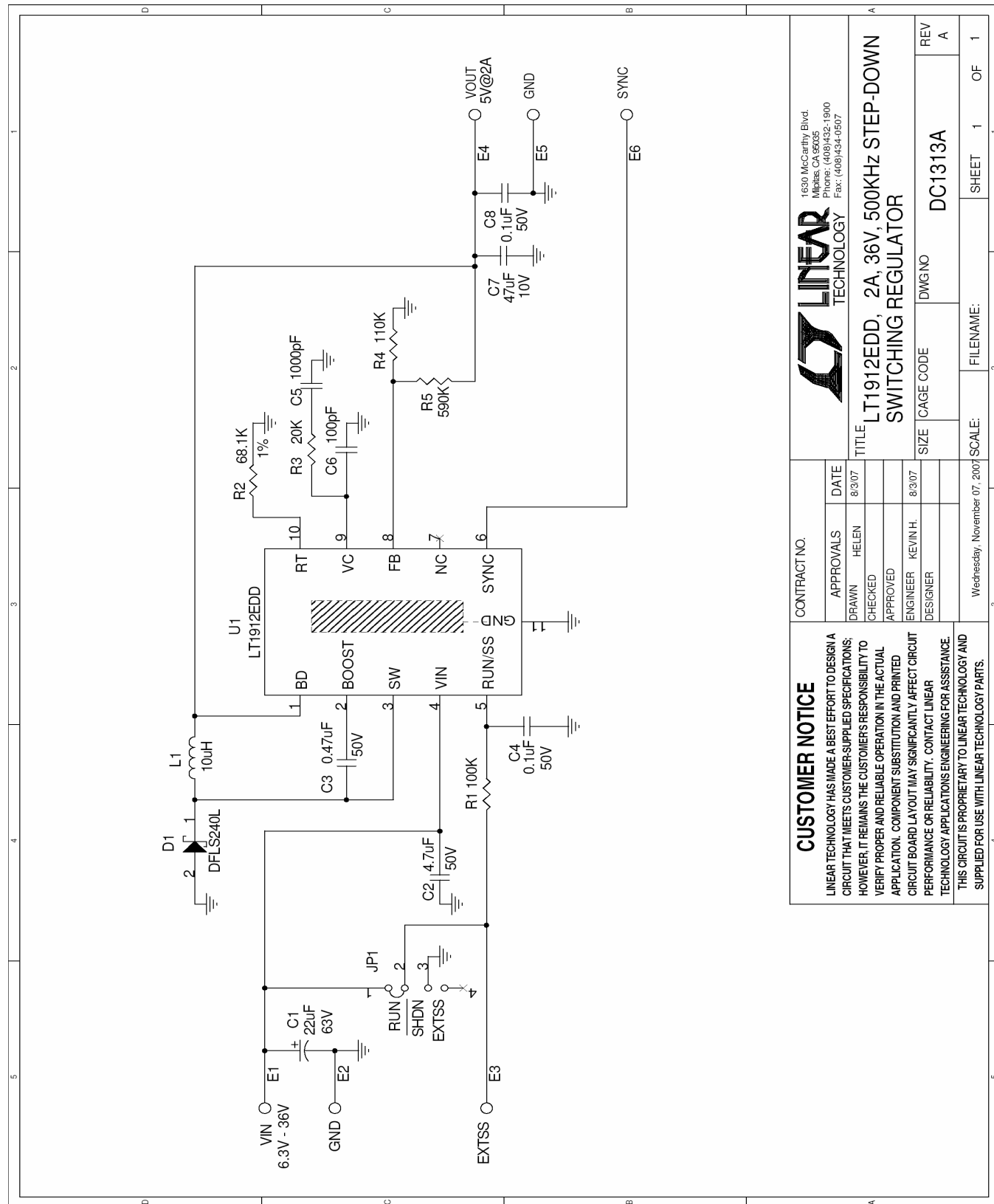




Figure 2. Measuring Input or Output Ripple



CUSTOMER NOTICE		CONTRACT NO.	
LINEAR TECHNOLOGY HAS MADE A BEST EFFORT TO DESIGN A CIRCUIT THAT MEETS CUSTOMER-SUPPLIED SPECIFICATIONS; HOWEVER, IT REMAINS THE CUSTOMER'S RESPONSIBILITY TO VERIFY PROPER AND RELIABLE OPERATION IN THE ACTUAL APPLICATION. COMPONENT SUBSTITUTION AND PRINTED CIRCUIT BOARD LAYOUT MAY SIGNIFICANTLY AFFECT CIRCUIT PERFORMANCE OR RELIABILITY. CONTACT LINEAR TECHNOLOGY APPLICATIONS ENGINEERING FOR ASSISTANCE. THIS CIRCUIT IS PROPRIETARY TO LINEAR TECHNOLOGY AND SUPPLIED FOR USE WITH LINEAR TECHNOLOGY PARTS.		1630 McCarthy Blvd. Milpitas, CA 95035 Phone: (408)432-1900 Fax: (408)434-0907	
APPROVALS		DATE	
DRAWN HELEN		8/3/07	
CHECKED		APPROVED	
ENGINEER KEVIN H.		DESIGNER	
8/3/07			
TITLE		SIZE	
LT1912EDD, 2A, 36V, 500KHz STEP-DOWN SWITCHING REGULATOR		CAGE CODE	
DWG NO		REV	
DC1313A		A	
SCALE:		FILENAME:	
Wednesday, November 07, 2007		SHEET 1 OF 1	

Looking for pricing, stock, or lifecycle information?

Click below to explore more details on WIN SOURCE:

-  [View DC1313A on WIN SOURCE](#)
-  [Analog Devices Inc. Information](#)

Optimize Your Supply Chain with WIN SOURCE Solutions

-  Global Sourcing Solution
-  Obsolete Management
-  Cost Control Management
-  Shortage Management
-  Alternative Solution
-  Excess Inventory Management