



**THE DATASHEET OF
SFCDP2000303MX0**





Electrical Details

Electrical Configuration	C Filter	
Capacitance Measurement	@ 1000hr Point	
Current Rating	10A	
Insulation Resistance (IR)	10GΩ or 1000ΩF	
Temperature Rating	-55°C to +125°C	
Ferrite Inductance (Typical)	Not Applicable	

Mechanical Details

Head Diameter	6.35mm (0.250")
Nut A/F	7.92mm (0.312")
Washer Diameter	9.40mm (0.370")
Mounting Torque	0.6Nm (5.31lbf in) max. if using nut 0.3Nm (2.65lbf in) max. into tapped hole
Mounting Hole Diameter	5.7mm ± 0.1 (0.224" ± 0.004")
Max. Panel Thickness	3.9mm (0.154")
Weight (Typical)	1.8g (0.06oz)
Finish	Silver plate on copper undercoat

Product Code	Capacitance (±20%) UOS	Dielectric	Rated Voltage (Vdc)	DWV (Vdc)	Typical No-Load Insertion Loss (dB)									
					0.01MHz	0.1MHz	1MHz	10MHz	100MHz	1GHz				
*SFCDC5000100ZC	10pF -20% / +80%	COG/NP0	500#	750	-	-	-	-	-	4				
SFCDC5000150ZC	15pF -20% / +80%				-	-	-	-	-	7				
SFCDC5000220ZC	22pF -20% / +80%				-	-	-	-	-	10				
SFCDC5000330ZC	33pF -20% / +80%				-	-	-	-	-	12				
*SFCDC5000470ZC	47pF -20% / +80%				-	-	-	-	1	15				
*SFCDC5000680MC	68pF				-	-	-	-	2	18				
*SFCDC5000101MC	100pF				-	-	-	-	4	22				
SFCDC5000151MC	150pF				-	-	-	-	7	25				
*SFCDC5000221MC	220pF				-	-	-	-	10	29				
*SFCDC5000331MC	330pF				-	-	-	-	19	33				
*SFCDC5000471MX	470pF	†X7R			500#	750	-	-	-	1	16	35		
SFCDC5000681MX	680pF						-	-	-	2	19	36		
*SFCDC5000102MX	1.0nF	X7R					500#	750	-	-	-	4	23	41
SFCDC5000152MX	1.5nF								-	-	-	7	26	45
*SFCDC5000222MX	2.2nF								-	-	-	10	30	50
SFCDC5000332MX	3.3nF								-	-	-	13	33	52
*SFCDC5000472MX	4.7nF								-	-	1	16	36	55
SFCDC5000682MX	6.8nF								-	-	-	19	39	57
*SFCDC5000103MX	10nF								-	-	4	22	41	60
*SFCDC5000153MX	15nF								-	-	7	25	44	62
*SFCDC5000223MX	22nF		-	-					10	29	46	65		
SFCDC5000333MX	33nF		-	-					13	33	48	68		
*SFCDC5000473MX	47nF	-	-	1					16	35	50	70		
SFCDC5000683MX	68nF	-	-	2					19	39	54	>70		
SFCDC5000104MX	100nF	-	-	4					22	41	57	>70		
SFCDC5000154MX	150nF	-	-	7					25	45	60	>70		
*SFCDC2000224MX	220nF	-	200	500					-	10	29	49	62	>70
SFCDC1000334MX	330nF	-	100	250					-	13	33	52	66	>70
*SFCDC1000474MX	470nF	1							16	35	55	68	>70	
SFCDC0500684MX	680nF	-	50	125					2	19	38	58	70	>70

Also rated for operation at 115Vac 400Hz. Self heating will occur - evaluation in situ recommended. * Recommended values. † Also available in COG/NP0.

Ordering Information - SFCDC range

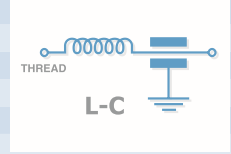
SF	C	D	C	500	0102	M	X	0
Type	Case style	Thread	Electrical configuration	Voltage (dc)	Capacitance in picofarads (pF)	Tolerance	Dielectric	Nuts & Washers
Syfer Filter	6.35mm Hex Head	12-32 UNEF	C = C Filter	050 = 50V 100 = 100V 200 = 200V 500 = 500V	First digit is 0. Second and third digits are significant figures of capacitance code. The fourth digit is number of zeros following Example: 0101 = 100pF 0332 = 3300pF	M = ±20% Z = -20+80%	C = COG/NP0 X = X7R	0 = Without 1 = With

Note: The addition of a 4-digit numerical suffix code can be used to denote changes to the standard part. Options include for example: change of finish / alternative voltage rating / non-standard intermediate capacitance values / test requirements. Please refer specific requests to the factory.



Electrical Details

Electrical Configuration	L-C Filter
Capacitance Measurement	@ 1000hr Point
Current Rating	10A
Insulation Resistance (IR)	10GΩ or 1000ΩF
Temperature Rating	-55°C to +125°C
Ferrite Inductance (Typical)	500nH



Mechanical Details

Head Diameter	6.35mm (0.250")
Nut A/F	7.92mm (0.312")
Washer Diameter	9.40mm (0.370")
Mounting Torque	0.6Nm (5.31lbf in) max. if using nut 0.3Nm (2.65lbf in) max. into tapped hole
Mounting Hole Diameter	5.7mm ± 0.1 (0.224" ± 0.004")
Max. Panel Thickness	3.9mm (0.154")
Weight (Typical)	1.8g (0.06oz)
Finish	Silver plate on copper undercoat

Product Code	Capacitance (±20%) UOS	Dielectric	Rated Voltage (Vdc)	DWV (Vdc)	Typical No-Load Insertion Loss (dB)					
					0.01MHz	0.1MHz	1MHz	10MHz	100MHz	1GHz
*SFCDL5000100ZC	10pF -20% / +80%	COG/NPO	500#	750	-	-	-	-	-	6
SFCDL5000150ZC	15pF -20% / +80%				-	-	-	-	-	9
SFCDL5000220ZC	22pF -20% / +80%				-	-	-	-	-	12
SFCDL5000330ZC	33pF -20% / +80%				-	-	-	-	1	15
*SFCDL5000470ZC	47pF -20% / +80%				-	-	-	-	2	19
*SFCDL5000680MC	68pF				-	-	-	-	4	20
*SFCDL5000101MC	100pF				-	-	-	-	7	24
SFCDL5000151MC	150pF				-	-	-	-	10	27
*SFCDL5000221MC	220pF				-	-	-	-	12	30
*SFCDL5000331MC	330pF				-	-	-	1	16	34
*SFCDL5000471MX	470pF	†X7R	500#	750	-	-	-	2	19	38
SFCDL5000681MX	680pF				-	-	-	3	22	41
*SFCDL5000102MX	1.0nF	X7R	500#	750	-	-	-	6	25	44
SFCDL5000152MX	1.5nF				-	-	-	9	29	48
*SFCDL5000222MX	2.2nF				-	-	-	12	31	51
SFCDL5000332MX	3.3nF				-	-	-	15	35	54
*SFCDL5000472MX	4.7nF				-	-	1	18	39	57
SFCDL5000682MX	6.8nF				-	-	2	21	41	60
*SFCDL5000103MX	10nF				-	-	4	23	43	63
*SFCDL5000153MX	15nF				-	-	7	27	46	66
*SFCDL5000223MX	22nF				-	-	10	30	48	68
SFCDL5000333MX	33nF				-	-	13	34	50	70
*SFCDL5000473MX	47nF				-	1	17	37	51	>70
SFCDL5000683MX	68nF				-	2	20	40	55	>70
SFCDL5000104MX	100nF				-	4	22	44	60	>70
SFCDL5000154MX	150nF				-	7	25	47	62	>70
*SFCDL2000224MX	220nF				-	10	29	49	66	>70
SFCDL1000334MX	330nF				-	13	33	52	68	>70
*SFCDL1000474MX	470nF				-	16	35	55	>70	>70
SFCDL0500684MX	680nF				-	19	38	58	>70	>70

Also rated for operation at 115Vac 400Hz. Self heating will occur - evaluation in situ recommended. * Recommended values. † Also available in COG/NPO.

Ordering Information - SFCDL range

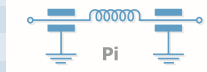
SF	C	D	L	500	0101	M	C	0
Type	Case style	Thread	Electrical configuration	Voltage (dc)	Capacitance in picofarads (pF)	Tolerance	Dielectric	Nuts & Washers
Syfer Filter	6.35mm Hex Head	12-32 UNEF	L = L-C Filter	050 = 50V 100 = 100V 200 = 200V 500 = 500V	First digit is 0. Second and third digits are significant figures of capacitance code. The fourth digit is number of zeros following Example: 0101 = 100pF 0332 = 3300pF	M = ±20% Z = -20+80%	C = COG/NPO X = X7R	0 = Without 1 = With

Note: The addition of a 4-digit numerical suffix code can be used to denote changes to the standard part. Options include for example: change of finish / alternative voltage rating / non-standard intermediate capacitance values / test requirements. Please refer specific requests to the factory.



Electrical Details

Electrical Configuration	Pi Filter
Capacitance Measurement	@ 1000hr Point
Current Rating	10A
Insulation Resistance (IR)	10GΩ or 1000ΩF
Temperature Rating	-55°C to +125°C
Ferrite Inductance (Typical)	250nH



Mechanical Details

Head Diameter	6.35mm (0.250")
Nut A/F	7.92mm (0.312")
Washer Diameter	9.40mm (0.370")
Mounting Torque	0.6Nm (5.31lbf in) max. if using nut 0.3Nm (2.65lbf in) max. into tapped hole
Mounting Hole Diameter	5.7mm ± 0.1 (0.224" ± 0.004")
Max. Panel Thickness	3.9mm (0.154")
Weight (Typical)	1.8g (0.06oz)
Finish	Silver plate on copper undercoat

Product Code	Capacitance (±20%) UOS	Dielectric	Rated Voltage (Vdc)	DWV (Vdc)	Typical No-Load Insertion Loss (dB)									
					0.01MHz	0.1MHz	1MHz	10MHz	100MHz	1GHz				
*SFCDP5000200ZC	20pF -20% / +80%	COG/NP0	500#	750					1	11				
SFCDP5000300ZC	30pF -20% / +80%										2	15		
SFCDP5000440ZC	44pF -20% / +80%										3	19		
SFCDP5000660ZC	66pF -20% / +80%										4	23		
*SFCDP5000940ZC	94pF -20% / +80%										6	29		
*SFCDP500136PMC	136pF										8	35		
*SFCDP5000201MC	200pF										11	41		
SFCDP5000301MC	300pF									1	15	50		
*SFCDP5000441MC	440pF									2	20	57		
*SFCDP5000661MC	660pF									3	25	65		
*SFCDP5000941MX	940pF				+X7R					5	31	68		
SFCDP5001N36MX	1.36nF				+X7R					7	37	>70		
*SFCDP5000202MX	2nF				X7R	200	500					10	44	>70
SFCDP5000302MX	3nF										13	51	>70	
*SFCDP5000442MX	4.4nF									1	17	59	>70	
SFCDP5000662MX	6.6nF									2	21	64	>70	
*SFCDP5000942MX	9.4nF									4	27	68	>70	
SFCDP50013N6MX	13.6nF									6	34	>70	>70	
*SFCDP5000203MX	20nF									9	40	>70	>70	
*SFCDP5000303MX	30nF									12	48	>70	>70	
*SFCDP5000443MX	44nF									1	14	54	>70	>70
SFCDP5000663MX	66nF									2	17	63	>70	>70
*SFCDP2000943MX	94nF									4	18	68	>70	>70
SFCDP200136NMX	136nF									8	25	>70	>70	>70
*SFCDP1000204MX	200nF									10	27	>70	>70	>70
*SFCDP0500304MX	300nF									13	30	>70	>70	>70

Also rated for operation at 115Vac 400Hz. Self heating will occur - evaluation in situ recommended. * Recommended values. † Also available in COG/NP0.

Ordering Information - SFCDP range

SF	C	D	P	200	0943	M	X	O
Type	Case style	Thread	Electrical configuration	Voltage (dc)	Capacitance in picofarads (pF)	Tolerance	Dielectric	Nuts & Washers
Syfer Filter	6.35mm Hex Head	12-32 UNEF	Pi = Pi Filter	050 = 50V 100 = 100V 200 = 200V 500 = 500V	First digit is 0. Second and third digits are significant figures of capacitance code. The fourth digit is number of zeros following Example: 0201 = 200pF 0943 = 9400pF	M = ±20% Z = -20+80%	C = COG/NP0 X = X7R	0 = Without 1 = With

Note: The addition of a 4-digit numerical suffix code can be used to denote changes to the standard part. Options include for example: change of finish / alternative voltage rating / non-standard intermediate capacitance values / test requirements. Please refer specific requests to the factory.

Looking for pricing, stock, or lifecycle information?

Click below to explore more details on WIN SOURCE:

 [View SFCDP2000303MX0 on WIN SOURCE](#)

 [Knowles Syfer](#) Information

Optimize Your Supply Chain with WIN SOURCE Solutions

-  Global Sourcing Solution
-  Obsolete Management
-  Cost Control Management
-  Shortage Management
-  Alternative Solution
-  Excess Inventory Management