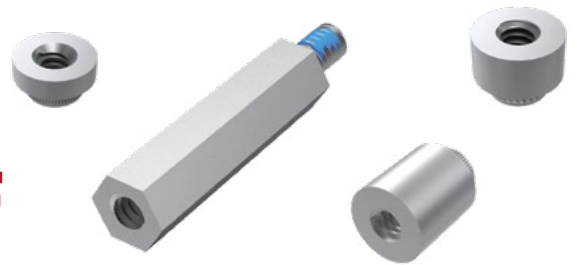




# PRECISION BOARD STACKING STANDOFF



## SO SERIES

### SO

#### Use With:

QXH, QXE, QXS,  
QXSS, QRX8, ERX5,  
ERX6, ERX8, LSHM,  
LSS, LSEM, SX4, SX5, XLH

### SPECIFICATIONS

#### Material:

Aluminum

#### Locking Compound:

Nylon



Specify  
BOARD STACKER  
from chart

**-01**  
= Female Thread/Press-In  
(-0515 thru -0865 only)

**-02**  
= Male/Male Thread  
(-0515 and  
-1115 thru -2515 only)

**-03**  
= Male/Female Thread  
(-0815 thru -2515 only)

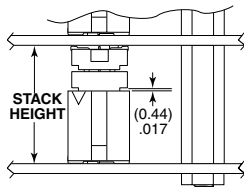
**-05**  
= Female/Female Thread  
(-1524 thru -2515 only)

**-01**  
= #4-40  
Thread

**-02**  
= M3 x 0.5  
Thread

**-L**  
= -02 & -03  
Lead Style  
thread locking  
compound  
(Leave blank for  
-01 Lead Style)

### INDUSTRY STANDARD SOLUTIONS



Requires Standoff  
SO-1524-03-01-01-L or  
JSOM-1524-02 for 15.24 mm  
or SO-2200-03-01-01-L  
for 22 mm board spacing.  
Connectors designed to not  
fully seat when mated.  
For more information on the JSOM,  
visit [samtec.com?JSOM](http://samtec.com?JSOM)

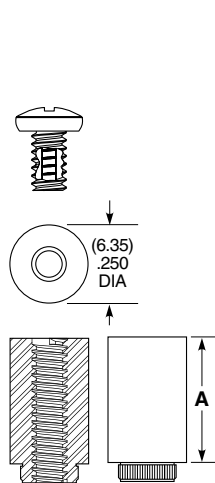
BOARD STACKER	A	BOARD STACK HEIGHT
-0515	(5.15) .203	5 mm
-0715	(7.15) .282	7 mm
-0815	(8.15) .321	8 mm
-0865	(8.65) .341	8.5 mm
-1115	(11.15) .439	11 mm
-1215	(12.15) .478	12 mm
-1524	(15.24) .600	15.09 mm
-1615	(16.15) .636	16 mm
-1890	(18.90) .744	18.75 mm
-1915	(19.15) .754	19 mm
-2515	(25.15) .990	25 mm

INDUSTRY STANDARD	INTERCONNECTS			
	TERMINAL	SOCKET	BANKS	STACK HEIGHT
SUMIT™	ASP-129637-01	ASP-129646-01	1	15.24 mm
PCI/104-Express™	ASP-129637-03	ASP-129646-03	3	15.24 mm
PCI/104-Express™	ASP-129637-13	ASP-129646-22	1	15.24 mm
PCI/104-Express™	ASP-142781-01	ASP-129646-01	1	22 mm
PCI/104-Express™	ASP-142781-02	ASP-129646-02	2	22 mm
PCI/104-Express™	ASP-142781-03	ASP-129646-03	3	22 mm

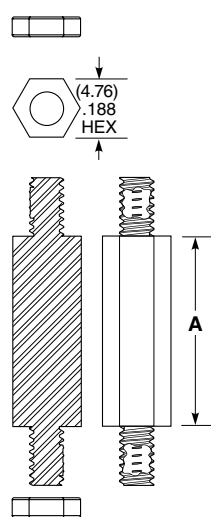
### ALSO AVAILABLE

MOQ Required

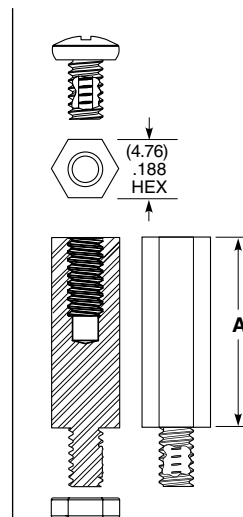
Other heights  
Stainless Steel  
Locking compound removed  
Other materials and threading  
No Hardware



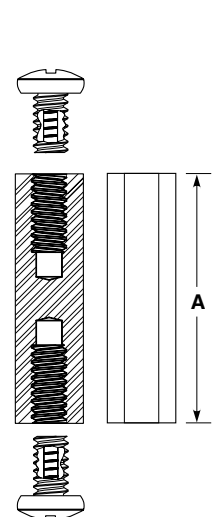
-01 LEAD STYLE



-02 LEAD STYLE



-03 LEAD STYLE



-05 LEAD STYLE

Components are to be packaged in separate bags unassembled.

#### Note:

Some sizes, styles and options are non-standard, non-returnable.

## Looking for pricing, stock, or lifecycle information?

Click below to explore more details on WIN SOURCE:

 [View SO-0715-01-01-02 on WIN SOURCE](#)

 [Samtec Inc. Information](#)

## Optimize Your Supply Chain with WIN SOURCE Solutions

-  Global Sourcing Solution
-  Obsolete Management
-  Cost Control Management
-  Shortage Management
-  Alternative Solution
-  Excess Inventory Management