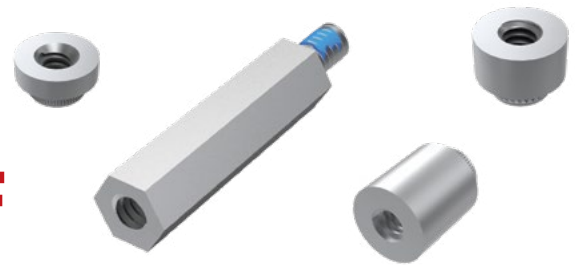




**THE DATASHEET OF
SO-0815-03-01-01-L**



PRECISION BOARD STACKING STANDOFF



SO SERIES

SO Use With:
 QXH, QXE, QXS,
 QXSS, QRX8, ERX5,
 ERX6, ERX8, LSHM,
 LSS, LSEM, SX4, SX5, XLH



Specify BOARD STACKER from chart

-01
 = Female Thread/Press-In (-0515 thru -0865 only)

-02
 = Male/Male Thread (-0515 and -1115 thru -2515 only)

-03
 = Male/Female Thread (-0815 thru -2515 only)

-05
 = Female/Female Thread (-1524 thru -2515 only)

-01
 = #4-40 Thread

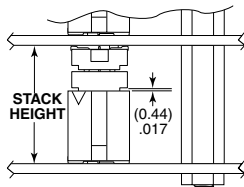
-02
 = M3 x 0.5 Thread

-L
 = -02 & -03 Lead Style thread locking compound (Leave blank for -01 Lead Style)

SPECIFICATIONS

Material: Aluminum
Locking Compound: Nylon

INDUSTRY STANDARD SOLUTIONS



Requires Standoff
 SO-1524-03-01-01-L or
 JSOM-1524-02 for 15.24 mm
 or SO-2200-03-01-01-L
 for 22 mm board spacing.
 Connectors designed to not
 fully seat when mated.
 For more information on the JSOM,
 visit samtec.com?JSOM

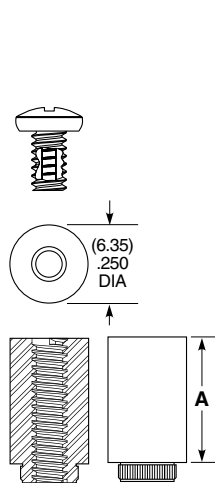
| BOARD STACKER | A | BOARD STACK HEIGHT |
|---------------|--------------|--------------------|
| -0515 | (5.15) .203 | 5 mm |
| -0715 | (7.15) .282 | 7 mm |
| -0815 | (8.15) .321 | 8 mm |
| -0865 | (8.65) .341 | 8.5 mm |
| -1115 | (11.15) .439 | 11 mm |
| -1215 | (12.15) .478 | 12 mm |
| -1524 | (15.24) .600 | 15.09 mm |
| -1615 | (16.15) .636 | 16 mm |
| -1890 | (18.90) .744 | 18.75 mm |
| -1915 | (19.15) .754 | 19 mm |
| -2515 | (25.15) .990 | 25 mm |

| INDUSTRY STANDARD | INTERCONNECTS | | | |
|-------------------|---------------|---------------|-------|--------------|
| | TERMINAL | SOCKET | BANKS | STACK HEIGHT |
| SUMIT™ | ASP-129637-01 | ASP-129646-01 | 1 | 15.24 mm |
| PCI/104-Express™ | ASP-129637-03 | ASP-129646-03 | 3 | 15.24 mm |
| PCI/104-Express™ | ASP-129637-13 | ASP-129646-22 | 1 | 15.24 mm |
| PCI/104-Express™ | ASP-142781-01 | ASP-129646-01 | 1 | 22 mm |
| PCI/104-Express™ | ASP-142781-02 | ASP-129646-02 | 2 | 22 mm |
| PCI/104-Express™ | ASP-142781-03 | ASP-129646-03 | 3 | 22 mm |

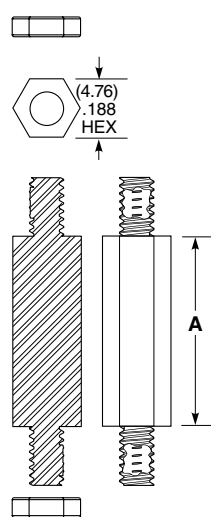
ALSO AVAILABLE

MOQ Required

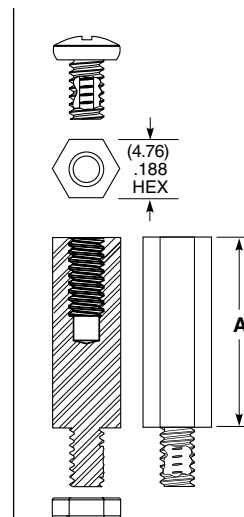
Other heights
 Stainless Steel
 Locking compound removed
 Other materials and threading
 No Hardware



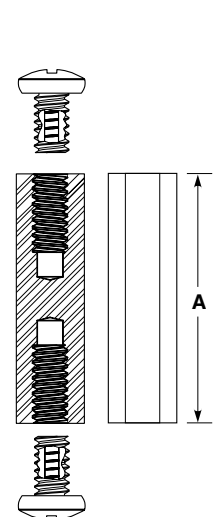
-01 LEAD STYLE



-02 LEAD STYLE



-03 LEAD STYLE





-05 LEAD STYLE

Components are to be packaged in separate bags unassembled.

Note:
 Some sizes, styles and options are non-standard, non-returnable.

Looking for pricing, stock, or lifecycle information?

Click below to explore more details on WIN SOURCE:

-  [View SO-0815-03-01-01-L on WIN SOURCE](#)
-  [Samtec Inc. Information](#)

Optimize Your Supply Chain with WIN SOURCE Solutions

-  Global Sourcing Solution
-  Obsolete Management
-  Cost Control Management
-  Shortage Management
-  Alternative Solution
-  Excess Inventory Management