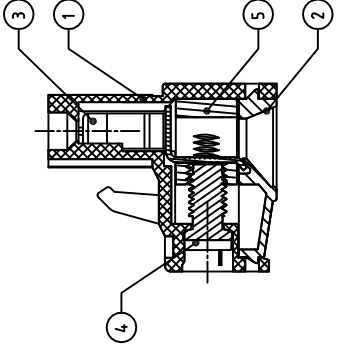
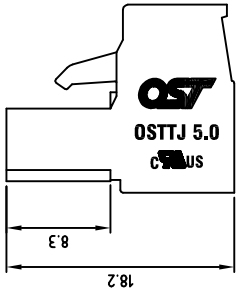
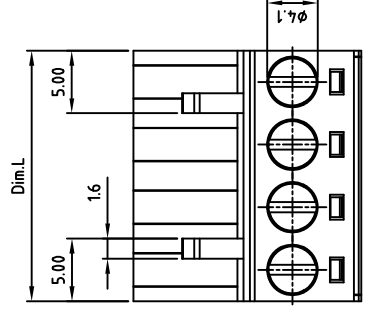
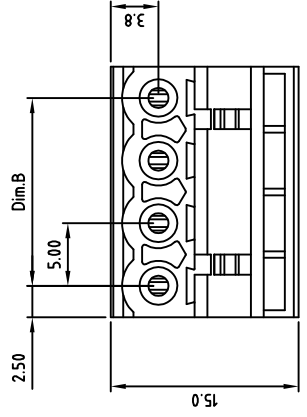
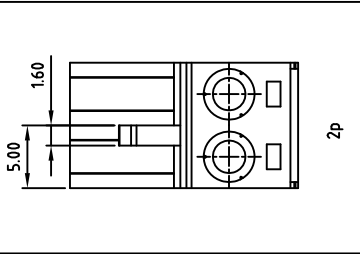




Transfer or duplication of this document as well as the utilisation or communication of its content are not permitted unless express consent is granted. Violations give rise to claims for damages. All rights reserved in case of patent, utility model or design patent registrations.



- Techni  
 1.No  
 1.PIT  
 2.Coil  
 Aw  
 3.Ins  
 AC  
 4.Ins  
 1000  
 5.Tig  
 5.0  
 6.Sc  
 7.Str  
 8.Op  
 9.Un

- D  
 D  
 P  
 0  
 0  
 0

- 10.Sa  
 11.Rot

Part No.: 03

5	CAGE	BRASS
4	SCREW	STEEL
3	WIRE GUARD	BRONZE (PbBz)
2	COVER	PA66 UL94V-0
1	BODY	PA66 UL94V-0
ITEM	NAME OF PART	MA
DWG.	W.F. Zhang	DATE 2015.11.23
CHK.	Manvin Zhang	DATE 2015.05.20
APP.		DATE




ON-SHORE TECHNOLOGY, INC.

△	SIGN	DESCRIPTION	CHK.	DATE
---	------	-------------	------	------

## Looking for pricing, stock, or lifecycle information?

Click below to explore more details on WIN SOURCE:

 [View D2758 on WIN SOURCE](#)

 [Intel Information](#)

## Optimize Your Supply Chain with WIN SOURCE Solutions

-  Global Sourcing Solution
-  Obsolete Management
-  Cost Control Management
-  Shortage Management
-  Alternative Solution
-  Excess Inventory Management