



**THE DATASHEET OF
D2-41051-QR-TK**



Table 1: Summary of Data	
Category	Value
Item 1	10
Item 2	20
Item 3	30
Item 4	40
Item 5	50
Item 6	60
Item 7	70
Item 8	80
Item 9	90
Item 10	100





The image shows a small, low-resolution thumbnail of a table. The table has approximately 10 columns and 15 rows. The first column appears to contain numerical values, while the other columns contain text. The text is illegible due to the small size. The table is enclosed in a thin black border.

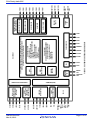
The image is a small, low-resolution thumbnail of a document page. It features a table with multiple columns and rows, and some text above and below it. The content is illegible due to the small size.

The image is a small, low-resolution scan of a document page, centered on a white background. It appears to be a table or a form with multiple rows and columns. The text is illegible due to the low resolution, but the layout suggests a structured data table. There are some dark, indistinct shapes that could be text or graphical elements, but they cannot be identified.

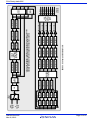




Year	Value
2010	100
2011	105
2012	110
2013	115
2014	120
2015	125
2016	130
2017	135
2018	140
2019	145
2020	150



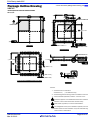
Small, illegible text block, possibly a page number or header, located in the center of the page.







Item	Quantity	Unit	Price	Total
1	1	kg	100	100
2	2	kg	200	400
3	3	kg	300	900
4	4	kg	400	1600
5	5	kg	500	2500
6	6	kg	600	3600
7	7	kg	700	4900
8	8	kg	800	6400
9	9	kg	900	8100
10	10	kg	1000	10000



Small, illegible text block, possibly a page number or header.

Looking for pricing, stock, or lifecycle information?

Click below to explore more details on WIN SOURCE:

 [View D2-41051-QR-TK on WIN SOURCE](#)

 [Intersil Information](#)

Optimize Your Supply Chain with WIN SOURCE Solutions

-  Global Sourcing Solution
-  Obsolete Management
-  Cost Control Management
-  Shortage Management
-  Alternative Solution
-  Excess Inventory Management