

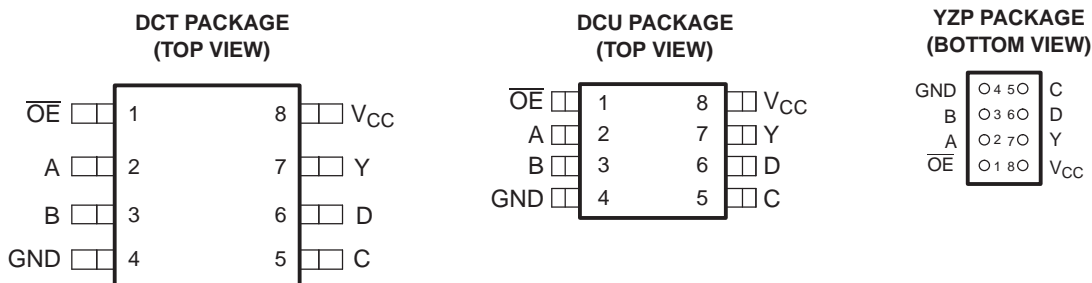


**THE DATASHEET OF  
SN74AUP1G99DCUTE4**



## FEATURES

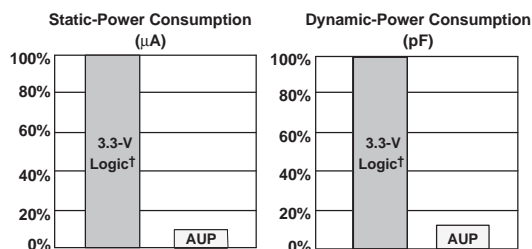
- Available in the Texas Instruments NanoFree™ Package
- Low Static-Power Consumption ( $I_{CC} = 0.9 \mu\text{A Max}$ )
- Low Dynamic-Power Consumption ( $C_{pd} = 5 \text{ pF Typ at } 3.3 \text{ V}$ )
- Low Input Capacitance ( $C_i = 1.5 \text{ pF}$ )
- Low Noise – Overshoot and Undershoot <math><10\% \text{ of } V\_{CC}</math>
- Input-Disable Feature Allows Floating Input Conditions
- $I_{off}$  Supports Partial-Power-Down Mode Operation
- Includes Schmitt-Trigger Inputs
- Wide Operating  $V_{CC}$  Range of 0.8 V to 3.6 V
- Optimized for 3.3-V Operation
- 3.6-V I/O Tolerant to Support Mixed-Mode Signal Operation
- $t_{pd} = 7.4 \text{ ns Max at } 3.3 \text{ V}$
- Suitable for Point-to-Point Applications
- Latch-Up Performance Exceeds 100 mA Per JESD 78, Class II
- ESD Performance Tested Per JESD 22
  - 2000-V Human-Body Model (A114-B, Class II)
  - 200-V Machine Model (A115-A)
  - 1000-V Charged-Device Model (C101)



See mechanical drawings for dimensions.

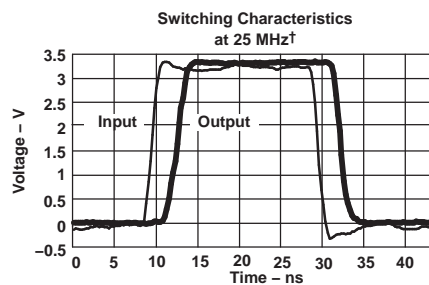
## DESCRIPTION/ORDERING INFORMATION

The AUP family is TI's premier solution to the industry's low-power needs in battery-powered portable applications. This family ensures a very low static- and dynamic-power consumption across the entire  $V_{CC}$  range of 0.8 V to 3.6 V, resulting in an increased battery life. This product also maintains excellent signal integrity (see Figures 1 and 2).



† Single, dual, and triple gates

**Figure 1. AUP - The Lowest-Power Family**



† AUP1G08 data at  $C_L = 15 \text{ pF}$

**Figure 2. Excellent Signal Integrity**



Please be aware that an important notice concerning availability, standard warranty, and use in critical applications of Texas Instruments semiconductor products and disclaimers thereto appears at the end of this data sheet.

NanoFree is a trademark of Texas Instruments.

# SN74AUP1G99 LOW-POWER ULTRA-CONFIGURABLE MULTIPLE-FUNCTION GATE WITH 3-STATE OUTPUTS

SCES594C–JULY 2004–REVISED DECEMBER 2007

## DESCRIPTION/ORDERING INFORMATION

The SN74AUP1G99 features configurable multiple functions with a 3-state output. This device has the input-disable feature, which allows floating input signals. The inputs and output are disabled when the output-enable ( $\overline{OE}$ ) input is high. When  $\overline{OE}$  is low, the output state is determined by 16 patterns of 4-bit input. The user can choose the logic functions, such as MUX, AND, OR, NAND, NOR, XOR, XNOR, inverter, and buffer. All inputs can be connected to  $V_{CC}$  or GND.

This device functions as an independent gate with Schmitt-trigger inputs, which allows for slow input transition and better switching noise immunity at the input.

To ensure the high-impedance state during power up or power down,  $\overline{OE}$  should be tied to  $V_{CC}$  through a pullup resistor; the minimum value of the resistor is determined by the current-sinking capability of the driver.

NanoStar™ and NanoFree™ package technology is a major breakthrough in IC packaging concepts, using the die as the package.

This device is fully specified for partial-power-down applications using  $I_{off}$ . The  $I_{off}$  circuitry disables the outputs, preventing damaging current backflow through the device when it is powered down.

## ORDERING INFORMATION

| $T_A$         | PACKAGE <sup>(1)(2)</sup>   |               | ORDERABLE PART NUMBER | TOP-SIDE MARKING <sup>(3)</sup> |
|---------------|---|---------------|-----------------------|---------------------------------|
| –40°C to 85°C | NanoFree™ – WCSP (DSBGA)<br>0.23-mm Large Bump – YZP<br>(Pb-free) | Tape and reel | SN74AUP1G99YZPR       | __ HY_                          |
|               | SSOP – DCT  | Tape and reel | SN74AUP1G99DCTR       | H99_ _ _                        |
|               | VSSOP – DCU   | Tape and reel | SN74AUP1G99DCUR       | H99_                            |

(1) Package drawings, thermal data, and symbolization are available at [www.ti.com/packaging](http://www.ti.com/packaging).

(2) For the most current package and ordering information, see the Package Option Addendum at the end of this document, or see the TI website at [www.ti.com](http://www.ti.com).

(3) DCT: The actual top-side marking has three additional characters that designate the year, month, and assembly/test site.

DCU: The actual top-side marking has one additional character that designates the assembly/test site.

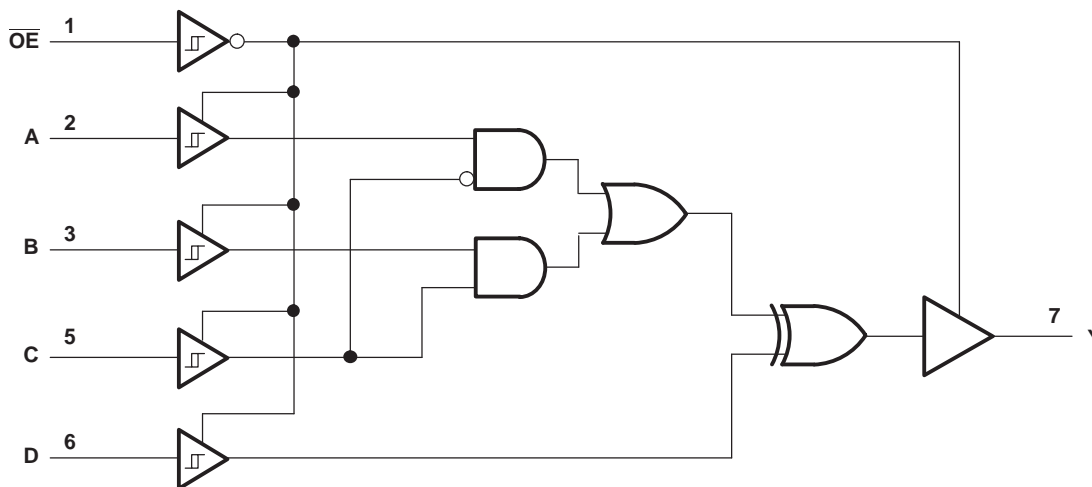
YZP: The actual top-side marking has three preceding characters to denote year, month, and sequence code, and one following character to designate the assembly/test site. Pin 1 identifier indicates solder-bump composition (1 = SnPb, • = Pb-free).

**FUNCTION TABLE**

| INPUTS          |                  |                  |                  |                  | OUTPUT<br>Y |
|-----------------|------------------|------------------|------------------|------------------|-------------|
| $\overline{OE}$ | D                | C                | B                | A                |             |
| L               | L                | L                | L                | L                | L           |
| L               | L                | L                | L                | H                | H           |
| L               | L                | L                | H                | L                | L           |
| L               | L                | L                | H                | H                | H           |
| L               | L                | H                | L                | L                | L           |
| L               | L                | H                | L                | H                | L           |
| L               | L                | H                | H                | L                | H           |
| L               | L                | H                | H                | H                | H           |
| L               | H                | L                | L                | L                | H           |
| L               | H                | L                | L                | H                | L           |
| L               | H                | L                | H                | L                | H           |
| L               | H                | L                | H                | H                | L           |
| L               | H                | H                | L                | L                | H           |
| L               | H                | H                | L                | H                | H           |
| L               | H                | H                | H                | L                | L           |
| L               | H                | H                | H                | H                | L           |
| H               | X <sup>(1)</sup> | X <sup>(1)</sup> | X <sup>(1)</sup> | X <sup>(1)</sup> | Z           |

(1) Floating inputs allowed.

**LOGIC DIAGRAM (POSITIVE LOGIC)**



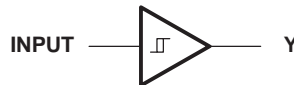
# SN74AUP1G99 LOW-POWER ULTRA-CONFIGURABLE MULTIPLE-FUNCTION GATE WITH 3-STATE OUTPUTS

SCES594C—JULY 2004—REVISED DECEMBER 2007

## FUNCTION SELECTION TABLE

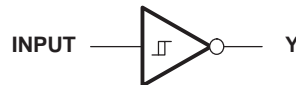
| PRIMARY FUNCTION                               | COMPLEMENTARY FUNCTION                    | PAGE |
|--|---|------|
| 3-state buffer                                 |   | 4    |
| 3-state inverter                               |   | 4    |
| 3-state 2-to-1 data selector MUX               |   | 5    |
| 3-state 2-to-1 data selector MUX, inverted out |   | 5    |
| 3-state 2-input AND                            | 3-state 2-input NOR, both inputs inverted | 5    |
| 3-state 2-input AND, 1 input inverted          | 3-state 2-input NOR, 1 input inverted     | 5    |
| 3-state 2-input AND, both inputs inverted      | 3-state 2-input NOR                       | 5    |
| 3-state 2-input NAND                           | 3-state 2-input OR, both inputs inverted  | 6    |
| 3-state 2-input NAND, 1 input inverted         | 3-state 2-input OR, 1 input inverted      | 6    |
| 3-state 2-input NAND, both inputs inverted     | 3-state 2-input OR                        | 6    |
| 3-state 2-input XOR                            |   | 6    |
| 3-state 2-input XNOR                           | 3-state 2-input XOR, 1 input inverted     | 7    |

### 3-STATE BUFFER FUNCTIONS AVAILABLE



| FUNCTION       | $\overline{OE}$ | A     | B     | C     | D     |
|----------------|-----------------|-------|-------|-------|-------|
| 3-state buffer | L               | Input | X     | L     | L     |
|                |                 | X     | Input | H     | L     |
|                |                 | L     | H     | Input | L     |
|                |                 | H     | L     | Input | H     |
|                |                 | H     | X     | L     | Input |
|                |                 | X     | L     | H     | Input |
|                |                 | L     | L     | X     | Input |

### 3-STATE INVERTER FUNCTIONS AVAILABLE



| FUNCTION         | $\overline{OE}$ | A     | B     | C     | D     |
|------------------|-----------------|-------|-------|-------|-------|
| 3-state inverter | L               | Input | X     | L     | H     |
|                  |                 | X     | Input | H     | H     |
|                  |                 | L     | H     | Input | H     |
|                  |                 | H     | L     | Input | L     |
|                  |                 | H     | X     | L     | Input |
|                  |                 | X     | H     | H     | Input |
|                  |                 | H     | H     | X     | Input |

3-STATE MUX FUNCTIONS AVAILABLE

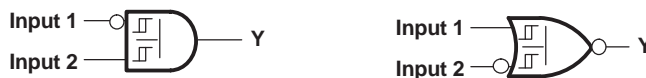


| FUNCTION  | $\overline{OE}$ | A       | B       | C                                      | D |
|---|-----------------|---------|---------|--|---|
| 3-state 2-to-1, data selector MUX               | L               | Input 1 | Input 2 | $\overline{\text{Input 1}}$ or Input 2 | L |
| 3-state 2-to-1, data selector MUX               |                 | Input 2 | Input 1 | $\overline{\text{Input 2}}$ or Input 1 | L |
| 3-state 2-to-1, data selector MUX, inverted out |                 | Input 1 | Input 2 | $\overline{\text{Input 1}}$ or Input 2 | H |
| 3-state 2-to-1, data selector MUX, inverted out |                 | Input 2 | Input 1 | $\overline{\text{Input 2}}$ or Input 1 | H |

3-STATE AND/NOR FUNCTIONS AVAILABLE



| NO. OF INPUTS | AND/NAND FUNCTION | OR/NOR FUNCTION                   | $\overline{OE}$ | A | B       | C       | D       |
|---------------|-------------------|-----------------------------------|-----------------|---|---------|---------|---------|
| 2             | 3-state AND       | 3-state NOR, both inputs inverted | L               | L | Input 1 | Input 2 | L       |
| 2             | 3-state AND       | 3-state NOR, both inputs inverted |                 | L | L       | Input 2 | Input 1 |



| NO. OF INPUTS | AND/NAND FUNCTION            | OR/NOR FUNCTION              | $\overline{OE}$ | A       | B       | C       | D |
|---------------|------------------------------|------------------------------|-----------------|---------|---------|---------|---|
| 2             | 3-state AND, with A inverted | 3-state NOR, with B inverted | L               | Input 2 | L       | Input 1 | L |
| 2             | 3-state AND, with A inverted | 3-state NOR, with B inverted |                 | H       | Input 1 | Input 2 | H |



| NO. OF INPUTS | AND/NAND FUNCTION            | OR/NOR FUNCTION              | $\overline{OE}$ | A       | B       | C       | D |
|---------------|------------------------------|------------------------------|-----------------|---------|---------|---------|---|
| 2             | 3-state AND, with B inverted | 3-state NOR, with A inverted | L               | Input 1 | L       | Input 2 | L |
| 2             | 3-state AND, with B inverted | 3-state NOR, with A inverted |                 | H       | Input 2 | Input 1 | H |



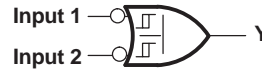
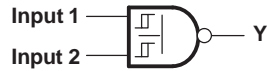
| NO. OF INPUTS | AND/NAND FUNCTION                 | OR/NOR FUNCTION | $\overline{OE}$ | A       | B | C       | D |
|---------------|-----------------------------------|-----------------|-----------------|---------|---|---------|---|
| 2             | 3-state AND, both inverted inputs | 3-state NOR     | L               | Input 1 | H | Input 2 | H |
| 2             | 3-state AND, both inverted inputs | 3-state NOR     |                 | Input 2 | H | Input 1 | H |

# SN74AUP1G99

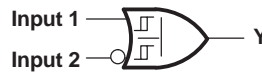
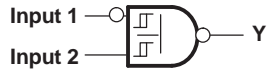
## LOW-POWER ULTRA-CONFIGURABLE MULTIPLE-FUNCTION GATE WITH 3-STATE OUTPUTS

SCES594C—JULY 2004—REVISED DECEMBER 2007

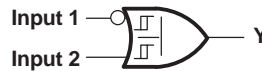
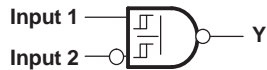
### 3-STATE NAND/OR FUNCTIONS AVAILABLE



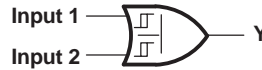
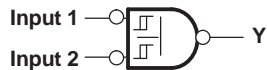
| NO. OF INPUTS | AND/NAND FUNCTION | OR/NOR FUNCTION                       | $\overline{OE}$ | A | B       | C       | D |
|---------------|-------------------|---------------------------------------|-----------------|---|---------|---------|---|
| 2             | 3-state NAND      | 3-state OR, with both inputs inverted | L               | L | Input 1 | Input 2 | H |
| 2             | 3-state NAND      | 3-state OR, with both inputs inverted |                 | L | Input 2 | Input 1 | H |



| NO. OF INPUTS | AND/NAND FUNCTION             | OR/NOR FUNCTION             | $\overline{OE}$ | A       | B       | C       | D |
|---------------|-------------------------------|-----------------------------|-----------------|---------|---------|---------|---|
| 2             | 3-state NAND, with A inverted | 3-state OR, with B inverted | L               | Input 2 | L       | Input 1 | H |
| 2             | 3-state NAND, with A inverted | 3-state OR, with B inverted |                 | H       | Input 1 | Input 2 | L |

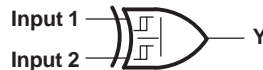


| NO. OF INPUTS | AND/NAND FUNCTION             | OR/NOR FUNCTION             | $\overline{OE}$ | A       | B       | C       | D |
|---------------|-------------------------------|-----------------------------|-----------------|---------|---------|---------|---|
| 2             | 3-state NAND, with B inverted | 3-state OR, with A inverted | L               | Input 1 | L       | Input 2 | H |
| 2             | 3-state NAND, with B inverted | 3-state OR, with A inverted |                 | H       | Input 2 | Input 1 | L |



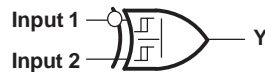
| NO. OF INPUTS | AND/NAND FUNCTION                       | OR/NOR FUNCTION | $\overline{OE}$ | A       | B | C       | D |
|---------------|---|-----------------|-----------------|---------|---|---------|---|
| 2             | 3-state NAND, with both inputs inverted | 3-state OR      | L               | Input 1 | H | Input 2 | L |
| 2             | 3-state NAND, with both inputs inverted | 3-state OR      |                 | Input 2 | H | Input 1 | L |

### 3-STATE XOR/XNOR FUNCTIONS AVAILABLE

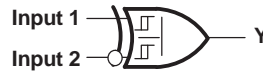


| FUNCTION    | $\overline{OE}$ | A       | B       | C       | D       |
|-------------|-----------------|---------|---------|---------|---------|
| 3-state XOR | L               | Input 1 | X       | L       | Input 2 |
|             |                 | Input 2 | X       | L       | Input 1 |
|             |                 | X       | Input 1 | H       | Input 2 |
|             |                 | X       | Input 2 | H       | Input 1 |
|             |                 | L       | H       | Input 1 | Input 2 |
|             |                 | L       | H       | Input 2 | Input 1 |

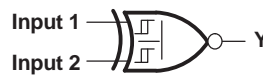
3-STATE XOR/XNOR FUNCTIONS AVAILABLE (continued)



| FUNCTION                     | $\overline{OE}$ | A | B | C       | D       |
|------------------------------|-----------------|---|---|---------|---------|
| 3-state XOR, with A inverted | L               | H | L | Input 1 | Input 2 |



| FUNCTION                     | $\overline{OE}$ | A | B | C       | D       |
|------------------------------|-----------------|---|---|---------|---------|
| 3-state XOR, with B inverted | L               | H | L | Input 1 | Input 2 |



| FUNCTION     | $\overline{OE}$ | A | B | C       | D       |
|--------------|-----------------|---|---|---------|---------|
| 3-state XNOR | L               | H | L | Input 1 | Input 2 |
| 3-state XNOR |                 | H | L | Input 2 | Input 1 |

**Absolute Maximum Ratings<sup>(1)</sup>**

over operating free-air temperature range (unless otherwise noted)

|               |   | MIN         | MAX            | UNIT               |
|---------------|---|-------------|----------------|--------------------|
| $V_{CC}$      | Supply voltage range  | -0.5        | 4.6            | V                  |
| $V_I$         | Input voltage range <sup>(2)</sup>  | -0.5        | 4.6            | V                  |
| $V_O$         | Voltage range applied to any output in the high-impedance or power-off state <sup>(2)</sup> | -0.5        | 4.6            | V                  |
| $V_O$         | Output voltage range in the high or low state <sup>(2)</sup>                                | -0.5        | $V_{CC} + 0.5$ | V                  |
| $I_{IK}$      | Input clamp current   | $V_I < 0$   |                | -50 mA             |
| $I_{OK}$      | Output clamp current  | $V_O < 0$   |                | -50 mA             |
| $I_O$         | Continuous output current   |             |                | $\pm 20$ mA        |
|               | Continuous current through $V_{CC}$ or GND  |             |                | $\pm 50$ mA        |
| $\theta_{JA}$ | Package thermal impedance <sup>(3)</sup>  | DCT package |                | 220                |
|               |   | DCU package |                | 227                |
|               |   | YZP package |                | 102                |
| $T_{stg}$     | Storage temperature range   | -65         | 150            | $^{\circ}\text{C}$ |

- (1) Stresses beyond those listed under "absolute maximum ratings" may cause permanent damage to the device. These are stress ratings only, and functional operation of the device at these or any other conditions beyond those indicated under "recommended operating conditions" is not implied. Exposure to absolute-maximum-rated conditions for extended periods may affect device reliability.
- (2) The input negative-voltage and output voltage ratings may be exceeded if the input and output current ratings are observed.
- (3) The package thermal impedance is calculated in accordance with JESD 51-7.

# SN74AUP1G99

## LOW-POWER ULTRA-CONFIGURABLE MULTIPLE-FUNCTION GATE WITH 3-STATE OUTPUTS

SCES594C–JULY 2004–REVISED DECEMBER 2007

### Recommended Operating Conditions<sup>(1)</sup>

|                     |                                    | MIN                                     | MAX  | UNIT               |      |
|---------------------|------------------------------------|---|------|--------------------|------|
| $V_{CC}$            | Supply voltage                     | 0.8                                     | 3.6  | V                  |      |
| $V_I$               | Input voltage                      | 0                                       | 3.6  | V                  |      |
| $V_O$               | Output voltage                     | Active state                            | 0    | $V_{CC}$           |      |
|                     |                                    | 3-state                                 | 0    | 3.6                |      |
| $I_{OH}$            | High-level output current          | $V_{CC} = 0.8\text{ V}$                 | -20  | $\mu\text{A}$      |      |
|                     |                                    | $V_{CC} = 1.1\text{ V}$                 | -1.1 | mA                 |      |
|                     |                                    | $V_{CC} = 1.4\text{ V}$                 | -1.7 |                    |      |
|                     |                                    | $V_{CC} = 1.65\text{ V}$                | -1.9 |                    |      |
|                     |                                    | $V_{CC} = 2.3\text{ V}$                 | -3.1 |                    |      |
|                     |                                    | $V_{CC} = 3\text{ V}$                   | -4   |                    |      |
| $I_{OL}$            | Low-level output current           | $V_{CC} = 0.8\text{ V}$                 | 20   | $\mu\text{A}$      |      |
|                     |                                    | $V_{CC} = 1.1\text{ V}$                 | 1.1  | mA                 |      |
|                     |                                    | $V_{CC} = 1.4\text{ V}$                 | 1.7  |                    |      |
|                     |                                    | $V_{CC} = 1.65\text{ V}$                | 1.9  |                    |      |
|                     |                                    | $V_{CC} = 2.3\text{ V}$                 | 3.1  |                    |      |
|                     |                                    | $V_{CC} = 3\text{ V}$                   | 4    |                    |      |
| $\Delta t/\Delta v$ | Input transition rise or fall rate | $V_{CC} = 0.8\text{ V to }3.6\text{ V}$ |      | 200                | ns/V |
| $T_A$               | Operating free-air temperature     | -40                                     | 85   | $^{\circ}\text{C}$ |      |

(1) All unused inputs of the device must be held at  $V_{CC}$  or GND to ensure proper device operation. Refer to the TI application report, *Implications of Slow or Floating CMOS Inputs*, literature number SCBA004.

**Electrical Characteristics**

over recommended operating free-air temperature range (unless otherwise noted)

| PARAMETER   | TEST CONDITIONS   | V <sub>CC</sub> | T <sub>A</sub> = 25°C  |     |                       | T <sub>A</sub> = –40°C to 85°C |      | UNIT |
|---|---|-----------------|------------------------|-----|-----------------------|--------------------------------|------|------|
|   |   |                 | MIN                    | TYP | MAX                   | MIN                            | MAX  |      |
| V <sub>T+</sub><br>Positive-going<br>input threshold<br>voltage       |   | 0.8 V           | 0.3                    |     | 0.6                   | 0.3                            | 0.6  | V    |
|   |   | 1.1 V           | 0.53                   |     | 0.9                   | 0.53                           | 0.9  |      |
|   |   | 1.4 V           | 0.74                   |     | 1.11                  | 0.74                           | 1.11 |      |
|   |   | 1.65 V          | 0.91                   |     | 1.29                  | 0.91                           | 1.29 |      |
|   |   | 2.3 V           | 1.37                   |     | 1.77                  | 1.37                           | 1.77 |      |
|   |   | 3 V             | 1.88                   |     | 2.29                  | 1.88                           | 2.29 |      |
| V <sub>T–</sub><br>Negative-going<br>input threshold<br>voltage       |   | 0.8 V           | 0.1                    |     | 0.6                   | 0.1                            | 0.6  | V    |
|   |   | 1.1 V           | 0.26                   |     | 0.65                  | 0.26                           | 0.65 |      |
|   |   | 1.4 V           | 0.39                   |     | 0.75                  | 0.39                           | 0.75 |      |
|   |   | 1.65 V          | 0.47                   |     | 0.84                  | 0.47                           | 0.84 |      |
|   |   | 2.3 V           | 0.69                   |     | 1.04                  | 0.69                           | 1.04 |      |
|   |   | 3 V             | 0.88                   |     | 1.24                  | 0.88                           | 1.24 |      |
| ΔV <sub>T</sub><br>Hysteresis<br>(V <sub>T+</sub> – V <sub>T–</sub> ) |   | 0.8 V           | 0.07                   |     | 0.5                   | 0.07                           | 0.5  | V    |
|   |   | 1.1 V           | 0.08                   |     | 0.46                  | 0.08                           | 0.46 |      |
|   |   | 1.4 V           | 0.18                   |     | 0.56                  | 0.18                           | 0.56 |      |
|   |   | 1.65 V          | 0.27                   |     | 0.66                  | 0.27                           | 0.66 |      |
|   |   | 2.3 V           | 0.53                   |     | 0.92                  | 0.53                           | 0.92 |      |
|   |   | 3 V             | 0.79                   |     | 1.31                  | 0.79                           | 1.31 |      |
| V <sub>OH</sub>   | I <sub>OH</sub> = –20 μA<br>I <sub>OH</sub> = –1.1 mA<br>I <sub>OH</sub> = –1.7 mA<br>I <sub>OH</sub> = –1.9 mA<br>I <sub>OH</sub> = –2.3 mA<br>I <sub>OH</sub> = –3.1 mA<br>I <sub>OH</sub> = –2.7 mA<br>I <sub>OH</sub> = –4 mA | 0.8 V to 3.6 V  | V <sub>CC</sub> – 0.1  |     | V <sub>CC</sub> – 0.1 |                                | V    |      |
|   |   | 1.1 V           | 0.75 × V <sub>CC</sub> |     | 0.7 × V <sub>CC</sub> |                                |      |      |
|   |   | 1.4 V           | 1.11                   |     | 1.03                  |                                |      |      |
|   |   | 1.65 V          | 1.32                   |     | 1.3                   |                                |      |      |
|   |   | 2.3 V           | 2.05                   |     | 1.97                  |                                |      |      |
|   |   |                 | 1.9                    |     | 1.85                  |                                |      |      |
|   |   | 3 V             | 2.72                   |     | 2.67                  |                                |      |      |
|   |   |                 | 2.6                    |     | 2.55                  |                                |      |      |
| V <sub>OL</sub>   | I <sub>OL</sub> = 20 μA<br>I <sub>OL</sub> = 1.1 mA<br>I <sub>OL</sub> = 1.7 mA<br>I <sub>OL</sub> = 1.9 mA<br>I <sub>OL</sub> = 2.3 mA<br>I <sub>OL</sub> = 3.1 mA<br>I <sub>OL</sub> = 2.7 mA<br>I <sub>OL</sub> = 4 mA         | 0.8 V to 3.6 V  | 0.1                    |     | 0.1                   |                                | V    |      |
|   |   | 1.1 V           | 0.3 × V <sub>CC</sub>  |     | 0.3 × V <sub>CC</sub> |                                |      |      |
|   |   | 1.4 V           | 0.31                   |     | 0.37                  |                                |      |      |
|   |   | 1.65 V          | 0.31                   |     | 0.35                  |                                |      |      |
|   |   | 2.3 V           | 0.31                   |     | 0.33                  |                                |      |      |
|   |   |                 | 0.44                   |     | 0.45                  |                                |      |      |
|   |   | 3 V             | 0.31                   |     | 0.33                  |                                |      |      |
|   |   |                 | 0.44                   |     | 0.45                  |                                |      |      |
| I <sub>i</sub>  | All inputs<br>V <sub>I</sub> = GND to 3.6 V   | 0 V to 3.6 V    |                        | 0.1 |                       | 0.5                            | μA   |      |
| I <sub>off</sub>  | V <sub>I</sub> or V <sub>O</sub> = 0 V to 3.6 V   | 0 V             |                        | 0.2 |                       | 0.6                            | μA   |      |
| ΔI <sub>off</sub>   | V <sub>I</sub> or V <sub>O</sub> = 0 V to 3.6 V   | 0 V to 0.2 V    |                        | 0.2 |                       | 0.6                            | μA   |      |
| I <sub>OZ</sub>   | V <sub>O</sub> = V <sub>CC</sub> or GND   | 3.6 V           |                        | 0.1 |                       | 0.5                            | μA   |      |
| I <sub>CC</sub>   | V <sub>I</sub> = GND or (V <sub>CC</sub> to 3.6 V),<br>OE = GND, I <sub>O</sub> = 0   | 0.8 V to 3.6 V  |                        | 0.5 |                       | 0.9                            | μA   |      |

# SN74AUP1G99

## LOW-POWER ULTRA-CONFIGURABLE MULTIPLE-FUNCTION GATE WITH 3-STATE OUTPUTS

SCES594C–JULY 2004–REVISED DECEMBER 2007

### Electrical Characteristics (continued)

over recommended operating free-air temperature range (unless otherwise noted)

| PARAMETER        |                 | TEST CONDITIONS   | V <sub>CC</sub> | T <sub>A</sub> = 25°C |     |     | T <sub>A</sub> = –40°C to 85°C |     | UNIT |
|------------------|-----------------|---|-----------------|-----------------------|-----|-----|--------------------------------|-----|------|
|                  |                 |   |                 | MIN                   | TYP | MAX | MIN                            | MAX |      |
| ΔI <sub>CC</sub> | Data inputs     | V <sub>I</sub> = V <sub>CC</sub> – 0.6 V, <sup>(1)</sup> I <sub>O</sub> = 0     | 3.3 V           | 40                    |     |     | 50                             |     | μA   |
|                  | $\overline{OE}$ |   |                 | 110                   |     |     | 120                            |     |      |
|                  | All inputs      | V <sub>I</sub> = GND to 3.6 V, $\overline{OE}$ = V <sub>CC</sub> <sup>(2)</sup> | 0.8 V to 3.6 V  | 0                     |     |     |                                |     | nA   |
| C <sub>I</sub>   |                 | V <sub>I</sub> = V <sub>CC</sub> or GND   | 0 V             | 1.5                   |     |     |                                |     | pF   |
|                  |                 |   | 3.6 V           | 1.5                   |     |     |                                |     |      |
| C <sub>O</sub>   |                 | V <sub>O</sub> = V <sub>CC</sub> or GND   | 3.6 V           | 3                     |     |     |                                |     | pF   |

(1) One input at V<sub>CC</sub> – 0.6 V, other input at V<sub>CC</sub> or GND

(2) To show I<sub>CC</sub> is very low when the input-disable feature is enabled.

### Switching Characteristics

over recommended operating free-air temperature range, C<sub>L</sub> = 5 pF (unless otherwise noted) (see [Figure 3](#) and [Figure 4](#))

| PARAMETER        | FROM (INPUT)    | TO (OUTPUT) | V <sub>CC</sub> | T <sub>A</sub> = 25°C |      |      | T <sub>A</sub> = –40°C to 85°C |      | UNIT |
|------------------|-----------------|-------------|-----------------|-----------------------|------|------|--------------------------------|------|------|
|                  |                 |             |                 | MIN                   | TYP  | MAX  | MIN                            | MAX  |      |
| t <sub>pd</sub>  | A, B, C, or D   | Y           | 0.8 V           | 32                    |      |      |                                |      | ns   |
|                  |                 |             | 1.2 V ± 0.1 V   | 0.5                   | 9.9  | 20.1 | 0.5                            | 26.6 |      |
|                  |                 |             | 1.5 V ± 0.1 V   | 1.4                   | 6.6  | 11.9 | 0.5                            | 16.8 |      |
|                  |                 |             | 1.8 V ± 0.15 V  | 1.8                   | 5.3  | 8.9  | 1                              | 13   |      |
|                  |                 |             | 2.5 V ± 0.2 V   | 2.1                   | 3.9  | 5.8  | 1.3                            | 8.9  |      |
|                  |                 |             | 3.3 V ± 0.3 V   | 1.9                   | 3.3  | 4.8  | 1.2                            | 7.4  |      |
| t <sub>en</sub>  | $\overline{OE}$ | Y           | 0.8 V           | 35                    |      |      |                                |      | ns   |
|                  |                 |             | 1.2 V ± 0.1 V   | 0.6                   | 11.1 | 21.7 | 0.5                            | 25.2 |      |
|                  |                 |             | 1.5 V ± 0.1 V   | 2.3                   | 7.4  | 12.6 | 1.4                            | 16.4 |      |
|                  |                 |             | 1.8 V ± 0.15 V  | 2                     | 5.7  | 9.4  | 1.1                            | 12.8 |      |
|                  |                 |             | 2.5 V ± 0.2 V   | 2.1                   | 4.1  | 6.2  | 1.2                            | 8.5  |      |
|                  |                 |             | 3.3 V ± 0.3 V   | 1.9                   | 3.4  | 5    | 1.1                            | 6.7  |      |
| t <sub>dis</sub> | $\overline{OE}$ | Y           | 0.8 V           | 9.8                   |      |      |                                |      | ns   |
|                  |                 |             | 1.2 V ± 0.1 V   | 1.4                   | 4.5  | 7.7  | 1.5                            | 8.2  |      |
|                  |                 |             | 1.5 V ± 0.1 V   | 1.7                   | 3.2  | 4.8  | 1.7                            | 6    |      |
|                  |                 |             | 1.8 V ± 0.15 V  | 1.5                   | 3    | 4.7  | 1.3                            | 6.1  |      |
|                  |                 |             | 2.5 V ± 0.2 V   | 0.9                   | 1.9  | 3    | 0.7                            | 4.2  |      |
|                  |                 |             | 3.3 V ± 0.3 V   | 0.8                   | 2.5  | 4.4  | 0.7                            | 4.5  |      |

**Switching Characteristics**

 over recommended operating free-air temperature range,  $C_L = 10$  pF (unless otherwise noted) (see [Figure 3](#) and [Figure 4](#))

| PARAMETER | FROM<br>(INPUT) | TO<br>(OUTPUT) | $V_{CC}$                         | $T_A = 25^\circ\text{C}$ |      |      | $T_A = -40^\circ\text{C}$<br>to $85^\circ\text{C}$ |      | UNIT |
|-----------|-----------------|----------------|----------------------------------|--------------------------|------|------|--|------|------|
|           |                 |                |                                  | MIN                      | TYP  | MAX  | MIN  | MAX  |      |
| $t_{pd}$  | A, B, C, or D   | Y              | 0.8 V                            | 36                       |      |      |  |      | ns   |
|           |                 |                | $1.2\text{ V} \pm 0.1\text{ V}$  | 0.4                      | 10.7 | 21.1 | 0.7  | 29.8 |      |
|           |                 |                | $1.5\text{ V} \pm 0.1\text{ V}$  | 2                        | 7.2  | 12.6 | 1.1  | 18.5 |      |
|           |                 |                | $1.8\text{ V} \pm 0.15\text{ V}$ | 2.3                      | 5.8  | 9.5  | 1.5  | 14.5 |      |
|           |                 |                | $2.5\text{ V} \pm 0.2\text{ V}$  | 2.5                      | 4.4  | 6.3  | 1.7  | 10.5 |      |
|           | $\overline{OE}$ | Y              | 0.8 V                            | 0                        |      |      |  |      | ns   |
|           |                 |                | $1.2\text{ V} \pm 0.1\text{ V}$  | 1.4                      | 12.1 | 22.8 | 0.8  | 29.3 |      |
|           |                 |                | $1.5\text{ V} \pm 0.1\text{ V}$  | 2.8                      | 8    | 13.3 | 2  | 18.7 |      |
|           |                 |                | $1.8\text{ V} \pm 0.15\text{ V}$ | 2.5                      | 6.2  | 10   | 1.6  | 14.8 |      |
|           |                 |                | $2.5\text{ V} \pm 0.2\text{ V}$  | 2.5                      | 4.5  | 6.7  | 1.6  | 9.9  |      |
|           | $\overline{OE}$ | Y              | 0.8 V                            | 0                        |      |      |  |      | ns   |
|           |                 |                | $1.2\text{ V} \pm 0.1\text{ V}$  | 2                        | 5.6  | 9.3  | 2  | 10   |      |
|           |                 |                | $1.5\text{ V} \pm 0.1\text{ V}$  | 2.5                      | 4.1  | 5.8  | 2.4  | 7.6  |      |
|           |                 |                | $1.8\text{ V} \pm 0.15\text{ V}$ | 2.9                      | 4.2  | 5.7  | 2.7  | 7.9  |      |
|           |                 |                | $2.5\text{ V} \pm 0.2\text{ V}$  | 1.1                      | 2.7  | 4.4  | 1.1  | 5.5  |      |
|           |                 |                | $3.3\text{ V} \pm 0.3\text{ V}$  | 1.9                      | 3.5  | 5.2  | 1.9  | 5.8  |      |

# SN74AUP1G99

## LOW-POWER ULTRA-CONFIGURABLE MULTIPLE-FUNCTION GATE WITH 3-STATE OUTPUTS

SCES594C–JULY 2004–REVISED DECEMBER 2007

### Switching Characteristics

over recommended operating free-air temperature range,  $C_L = 15$  pF (unless otherwise noted) (see [Figure 3](#) and [Figure 4](#))

| PARAMETER | FROM (INPUT)    | TO (OUTPUT) | $V_{CC}$                         | $T_A = 25^\circ\text{C}$ |      |      | $T_A = -40^\circ\text{C}$ to $85^\circ\text{C}$ |      | UNIT |
|-----------|-----------------|-------------|----------------------------------|--------------------------|------|------|---|------|------|
|           |                 |             |                                  | MIN                      | TYP  | MAX  | MIN   | MAX  |      |
| $t_{pd}$  | A, B, C, or D   | Y           | 0.8 V                            | 38                       |      |      |   |      | ns   |
|           |                 |             | $1.2\text{ V} \pm 0.1\text{ V}$  | 0.9                      | 11.4 | 22   | 0.5   | 30.8 |      |
|           |                 |             | $1.5\text{ V} \pm 0.1\text{ V}$  | 2.5                      | 7.8  | 13.2 | 1.6   | 19.2 |      |
|           |                 |             | $1.8\text{ V} \pm 0.15\text{ V}$ | 2.7                      | 6.3  | 10   | 1.9   | 15.1 |      |
|           |                 |             | $2.5\text{ V} \pm 0.2\text{ V}$  | 2.8                      | 4.7  | 6.6  | 2   | 10.8 |      |
| $t_{en}$  | $\overline{OE}$ | Y           | 0.8 V                            | 44                       |      |      |   |      | ns   |
|           |                 |             | $1.2\text{ V} \pm 0.1\text{ V}$  | 1.8                      | 13   | 24.2 | 1.3   | 30.6 |      |
|           |                 |             | $1.5\text{ V} \pm 0.1\text{ V}$  | 3.2                      | 8.6  | 14.1 | 2.4   | 19.5 |      |
|           |                 |             | $1.8\text{ V} \pm 0.15\text{ V}$ | 2.9                      | 6.7  | 10.6 | 2   | 15.4 |      |
|           |                 |             | $2.5\text{ V} \pm 0.2\text{ V}$  | 2.8                      | 4.9  | 7    | 1.9   | 10.3 |      |
| $t_{dis}$ | $\overline{OE}$ | Y           | 0.8 V                            | 13                       |      |      |   |      | ns   |
|           |                 |             | $1.2\text{ V} \pm 0.1\text{ V}$  | 2.7                      | 6.3  | 9.9  | 2.8   | 10.7 |      |
|           |                 |             | $1.5 \pm 0.1\text{ V}$           | 3.2                      | 4.6  | 6.1  | 3.1   | 8    |      |
|           |                 |             | $1.8\text{ V} \pm 0.15\text{ V}$ | 3.2                      | 4.8  | 6.6  | 3   | 8.8  |      |
|           |                 |             | $2.5\text{ V} \pm 0.2\text{ V}$  | 2.2                      | 3.4  | 4.7  | 2   | 6    |      |
|           |                 |             | $3.3\text{ V} \pm 0.3\text{ V}$  | 2.4                      | 4.4  | 6.5  | 2.3   | 7.2  |      |

## Switching Characteristics

over recommended operating free-air temperature range,  $C_L = 30$  pF (unless otherwise noted) (see Figure 3 and Figure 4)

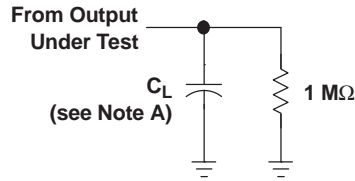
| PARAMETER | FROM (INPUT)    | TO (OUTPUT) | $V_{CC}$                         | $T_A = 25^\circ\text{C}$ |      |      | $T_A = -40^\circ\text{C}$<br>to $85^\circ\text{C}$ |      | UNIT |
|-----------|-----------------|-------------|----------------------------------|--------------------------|------|------|--|------|------|
|           |                 |             |                                  | MIN                      | TYP  | MAX  | MIN  | MAX  |      |
| $t_{pd}$  | A, B, C, or D   | Y           | 0.8 V                            | 48                       |      |      |  |      | ns   |
|           |                 |             | $1.2\text{ V} \pm 0.1\text{ V}$  | 3.1                      | 14   | 24.9 | 2.6  | 36.1 |      |
|           |                 |             | $1.5\text{ V} \pm 0.1\text{ V}$  | 4.2                      | 9.6  | 15.1 | 3.3  | 23.1 |      |
|           |                 |             | $1.8\text{ V} \pm 0.15\text{ V}$ | 4.1                      | 7.9  | 11.7 | 3.3  | 18   |      |
|           |                 |             | $2.5\text{ V} \pm 0.2\text{ V}$  | 4.1                      | 5.9  | 7.9  | 3.1  | 12.7 |      |
| $t_{en}$  | $\overline{OE}$ | Y           | 0.8 V                            | 50                       |      |      |  |      | ns   |
|           |                 |             | $1.2\text{ V} \pm 0.1\text{ V}$  | 4.4                      | 16   | 27.6 | 3.9  | 36.8 |      |
|           |                 |             | $1.5\text{ V} \pm 0.1\text{ V}$  | 5.3                      | 10.7 | 16.2 | 4.3  | 23.6 |      |
|           |                 |             | $1.8\text{ V} \pm 0.15\text{ V}$ | 4.6                      | 8.5  | 12.4 | 3.6  | 18.6 |      |
|           |                 |             | $2.5\text{ V} \pm 0.2\text{ V}$  | 4.2                      | 6.3  | 8.5  | 3.2  | 12.6 |      |
| $t_{dis}$ | $\overline{OE}$ | Y           | 0.8 V                            | 19                       |      |      |  |      | ns   |
|           |                 |             | $1.2\text{ V} \pm 0.1\text{ V}$  | 6                        | 10.1 | 14.2 | 6  | 14.6 |      |
|           |                 |             | $1.5\text{ V} \pm 0.1\text{ V}$  | 5.1                      | 7.4  | 10.6 | 5  | 10.1 |      |
|           |                 |             | $1.8\text{ V} \pm 0.15\text{ V}$ | 5.5                      | 8.6  | 11.6 | 5.5  | 12.1 |      |
|           |                 |             | $2.5\text{ V} \pm 0.2\text{ V}$  | 3.3                      | 5.9  | 8.3  | 3.3  | 8.9  |      |
|           |                 |             | $3.3\text{ V} \pm 0.3\text{ V}$  | 6                        | 8.7  | 10.9 | 5.9  | 11.8 |      |

## Operating Characteristics

$T_A = 25^\circ\text{C}$

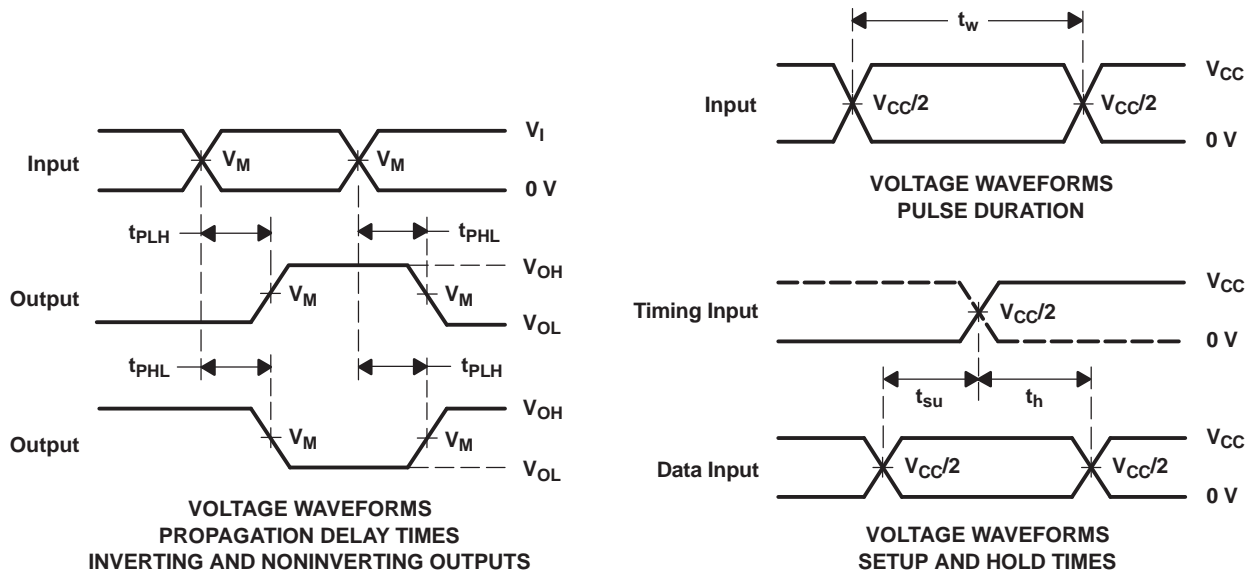
| PARAMETER |                               | TEST CONDITIONS                  | $V_{CC}$                         | TYP | UNIT |
|-----------|-------------------------------|----------------------------------|----------------------------------|-----|------|
| $C_{pd}$  | Power dissipation capacitance | Outputs enabled                  | 0.8 V                            | 4   | pF   |
|           |                               |                                  | $1.2 \pm 0.1\text{ V}$           | 4   |      |
|           |                               |                                  | $1.5 \pm 0.1\text{ V}$           | 4   |      |
|           |                               |                                  | $1.8\text{ V} \pm 0.15\text{ V}$ | 4   |      |
|           |                               |                                  | $2.5\text{ V} \pm 0.2\text{ V}$  | 5   |      |
|           |                               |                                  | $3.3\text{ V} \pm 0.3\text{ V}$  | 5   |      |
|           | Outputs disabled              | 0.8 V                            | 0                                |     |      |
|           |                               | $1.2 \pm 0.1\text{ V}$           | 0                                |     |      |
|           |                               | $1.5 \pm 0.1\text{ V}$           | 0                                |     |      |
|           |                               | $1.8\text{ V} \pm 0.15\text{ V}$ | 0                                |     |      |
|           |                               | $2.5\text{ V} \pm 0.2\text{ V}$  | 0                                |     |      |
|           |                               | $3.3\text{ V} \pm 0.3\text{ V}$  | 0                                |     |      |

**PARAMETER MEASUREMENT INFORMATION**  
**(Propagation Delays, Setup and Hold Times, and Pulse Width)**



**LOAD CIRCUIT**

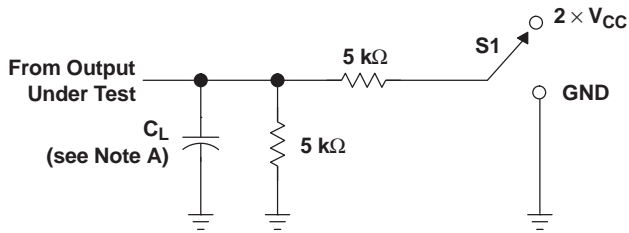
|       | $V_{CC} = 0.8\text{ V}$ | $V_{CC} = 1.2\text{ V}$<br>$\pm 0.1\text{ V}$ | $V_{CC} = 1.5\text{ V}$<br>$\pm 0.1\text{ V}$ | $V_{CC} = 1.8\text{ V}$<br>$\pm 0.15\text{ V}$ | $V_{CC} = 2.5\text{ V}$<br>$\pm 0.2\text{ V}$ | $V_{CC} = 3.3\text{ V}$<br>$\pm 0.3\text{ V}$ |
|-------|-------------------------|---|---|--|---|---|
| $C_L$ | 5, 10, 15, 30 pF        | 5, 10, 15, 30 pF                              | 5, 10, 15, 30 pF                              | 5, 10, 15, 30 pF                               | 5, 10, 15, 30 pF                              | 5, 10, 15, 30 pF                              |
| $V_M$ | $V_{CC}/2$              | $V_{CC}/2$                                    | $V_{CC}/2$                                    | $V_{CC}/2$                                     | $V_{CC}/2$                                    | $V_{CC}/2$                                    |
| $V_I$ | $V_{CC}$                | $V_{CC}$                                      | $V_{CC}$                                      | $V_{CC}$                                       | $V_{CC}$                                      | $V_{CC}$                                      |



- NOTES: A.  $C_L$  includes probe and jig capacitance.  
B. All input pulses are supplied by generators having the following characteristics:  $PRR \leq 10\text{ MHz}$ ,  $Z_O = 50\ \Omega$ , for propagation delays  $t_r/t_f = 3\text{ ns}$ , for setup and hold times and pulse width  $t_r/t_f = 1.2\text{ ns}$ .  
C. The outputs are measured one at a time, with one transition per measurement.  
D.  $t_{PLH}$  and  $t_{PHL}$  are the same as  $t_{pd}$ .  
E. All parameters and waveforms are not applicable to all devices.

**Figure 3. Load Circuit and Voltage Waveforms**

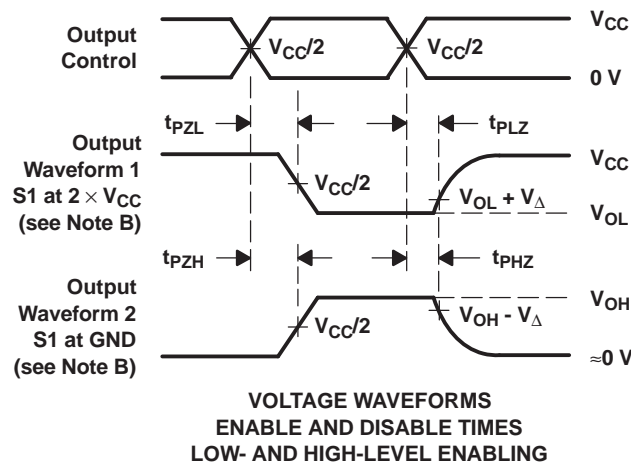
PARAMETER MEASUREMENT INFORMATION  
(Enable and Disable Times)



| TEST              | S1                |
|-------------------|-------------------|
| $t_{PLZ}/t_{PZL}$ | $2 \times V_{CC}$ |
| $t_{PHZ}/t_{PZH}$ | GND               |

LOAD CIRCUIT

|              | $V_{CC} = 0.8 \text{ V}$ | $V_{CC} = 1.2 \text{ V}$<br>$\pm 0.1 \text{ V}$ | $V_{CC} = 1.5 \text{ V}$<br>$\pm 0.1 \text{ V}$ | $V_{CC} = 1.8 \text{ V}$<br>$\pm 0.15 \text{ V}$ | $V_{CC} = 2.5 \text{ V}$<br>$\pm 0.2 \text{ V}$ | $V_{CC} = 3.3 \text{ V}$<br>$\pm 0.3 \text{ V}$ |
|--------------|--------------------------|---|---|--|---|---|
| $C_L$        | 5, 10, 15, 30 pF         | 5, 10, 15, 30 pF                                | 5, 10, 15, 30 pF                                | 5, 10, 15, 30 pF                                 | 5, 10, 15, 30 pF                                | 5, 10, 15, 30 pF                                |
| $V_M$        | $V_{CC}/2$               | $V_{CC}/2$                                      | $V_{CC}/2$                                      | $V_{CC}/2$                                       | $V_{CC}/2$                                      | $V_{CC}/2$                                      |
| $V_I$        | $V_{CC}$                 | $V_{CC}$  | $V_{CC}$  | $V_{CC}$   | $V_{CC}$  | $V_{CC}$  |
| $V_{\Delta}$ | 0.1 V                    | 0.1 V   | 0.1 V   | 0.15 V   | 0.15 V  | 0.3 V   |



VOLTAGE WAVEFORMS  
ENABLE AND DISABLE TIMES  
LOW- AND HIGH-LEVEL ENABLING

- NOTES:
- A.  $C_L$  includes probe and jig capacitance.
  - B. Waveform 1 is for an output with internal conditions such that the output is low, except when disabled by the output control. Waveform 2 is for an output with internal conditions such that the output is high, except when disabled by the output control.
  - C. All input pulses are supplied by generators having the following characteristics:  $PRR \leq 10 \text{ MHz}$ ,  $Z_O = 50 \Omega$ ,  $t_r/t_f = 3 \text{ ns}$ .
  - D. The outputs are measured one at a time, with one transition per measurement.
  - E.  $t_{PLZ}$  and  $t_{PHZ}$  are the same as  $t_{dis}$ .
  - F.  $t_{PZL}$  and  $t_{PZH}$  are the same as  $t_{en}$ .
  - G. All parameters and waveforms are not applicable to all devices.

Figure 4. Load Circuit and Voltage Waveforms

**PACKAGING INFORMATION**

| Orderable Device | Status<br>(1) | Package Type | Package Drawing | Pins | Package Qty | Eco Plan<br>(2) | Lead finish/<br>Ball material<br>(6) | MSL Peak Temp<br>(3) | Op Temp (°C) | Device Marking<br>(4/5) | Samples                 |
|------------------|---------------|--------------|-----------------|------|-------------|-----------------|--------------------------------------|----------------------|--------------|-------------------------|-------------------------|
| SN74AUP1G99DCTR  | ACTIVE        | SM8          | DCT             | 8    | 3000        | RoHS & Green    | NIPDAU   SN                          | Level-1-260C-UNLIM   | -40 to 85    | (2XG5, H99)<br>(R, Z)   | <a href="#">Samples</a> |
| SN74AUP1G99DCTT  | ACTIVE        | SM8          | DCT             | 8    | 250         | RoHS & Green    | NIPDAU   SN                          | Level-1-260C-UNLIM   | -40 to 85    | (2XG5, H99)<br>(R, Z)   | <a href="#">Samples</a> |
| SN74AUP1G99DCUR  | ACTIVE        | VSSOP        | DCU             | 8    | 3000        | RoHS & Green    | NIPDAU   SN                          | Level-1-260C-UNLIM   | -40 to 85    | (H99Q, H99R)            | <a href="#">Samples</a> |
| SN74AUP1G99DCUT  | ACTIVE        | VSSOP        | DCU             | 8    | 250         | RoHS & Green    | NIPDAU   SN                          | Level-1-260C-UNLIM   | -40 to 85    | (H99Q, H99R)            | <a href="#">Samples</a> |
| SN74AUP1G99YZPR  | ACTIVE        | DSBGA        | YZP             | 8    | 3000        | RoHS & Green    | SNAGCU                               | Level-1-260C-UNLIM   | -40 to 85    | HYN                     | <a href="#">Samples</a> |

(1) The marketing status values are defined as follows:

**ACTIVE:** Product device recommended for new designs.

**LIFEBUY:** TI has announced that the device will be discontinued, and a lifetime-buy period is in effect.

**NRND:** Not recommended for new designs. Device is in production to support existing customers, but TI does not recommend using this part in a new design.

**PREVIEW:** Device has been announced but is not in production. Samples may or may not be available.

**OBSELETE:** TI has discontinued the production of the device.

(2) **RoHS:** TI defines "RoHS" to mean semiconductor products that are compliant with the current EU RoHS requirements for all 10 RoHS substances, including the requirement that RoHS substance do not exceed 0.1% by weight in homogeneous materials. Where designed to be soldered at high temperatures, "RoHS" products are suitable for use in specified lead-free processes. TI may reference these types of products as "Pb-Free".

**RoHS Exempt:** TI defines "RoHS Exempt" to mean products that contain lead but are compliant with EU RoHS pursuant to a specific EU RoHS exemption.

**Green:** TI defines "Green" to mean the content of Chlorine (Cl) and Bromine (Br) based flame retardants meet JS709B low halogen requirements of <=1000ppm threshold. Antimony trioxide based flame retardants must also meet the <=1000ppm threshold requirement.

(3) MSL, Peak Temp. - The Moisture Sensitivity Level rating according to the JEDEC industry standard classifications, and peak solder temperature.

(4) There may be additional marking, which relates to the logo, the lot trace code information, or the environmental category on the device.

(5) Multiple Device Markings will be inside parentheses. Only one Device Marking contained in parentheses and separated by a "~" will appear on a device. If a line is indented then it is a continuation of the previous line and the two combined represent the entire Device Marking for that device.

(6) Lead finish/Ball material - Orderable Devices may have multiple material finish options. Finish options are separated by a vertical ruled line. Lead finish/Ball material values may wrap to two lines if the finish value exceeds the maximum column width.

**Important Information and Disclaimer:** The information provided on this page represents TI's knowledge and belief as of the date that it is provided. TI bases its knowledge and belief on information provided by third parties, and makes no representation or warranty as to the accuracy of such information. Efforts are underway to better integrate information from third parties. TI has taken and continues to take reasonable steps to provide representative and accurate information but may not have conducted destructive testing or chemical analysis on incoming materials and chemicals. TI and TI suppliers consider certain information to be proprietary, and thus CAS numbers and other limited information may not be available for release.

In no event shall TI's liability arising out of such information exceed the total purchase price of the TI part(s) at issue in this document sold by TI to Customer on an annual basis.

**TAPE AND REEL INFORMATION**

**QUADRANT ASSIGNMENTS FOR PIN 1 ORIENTATION IN TAPE**

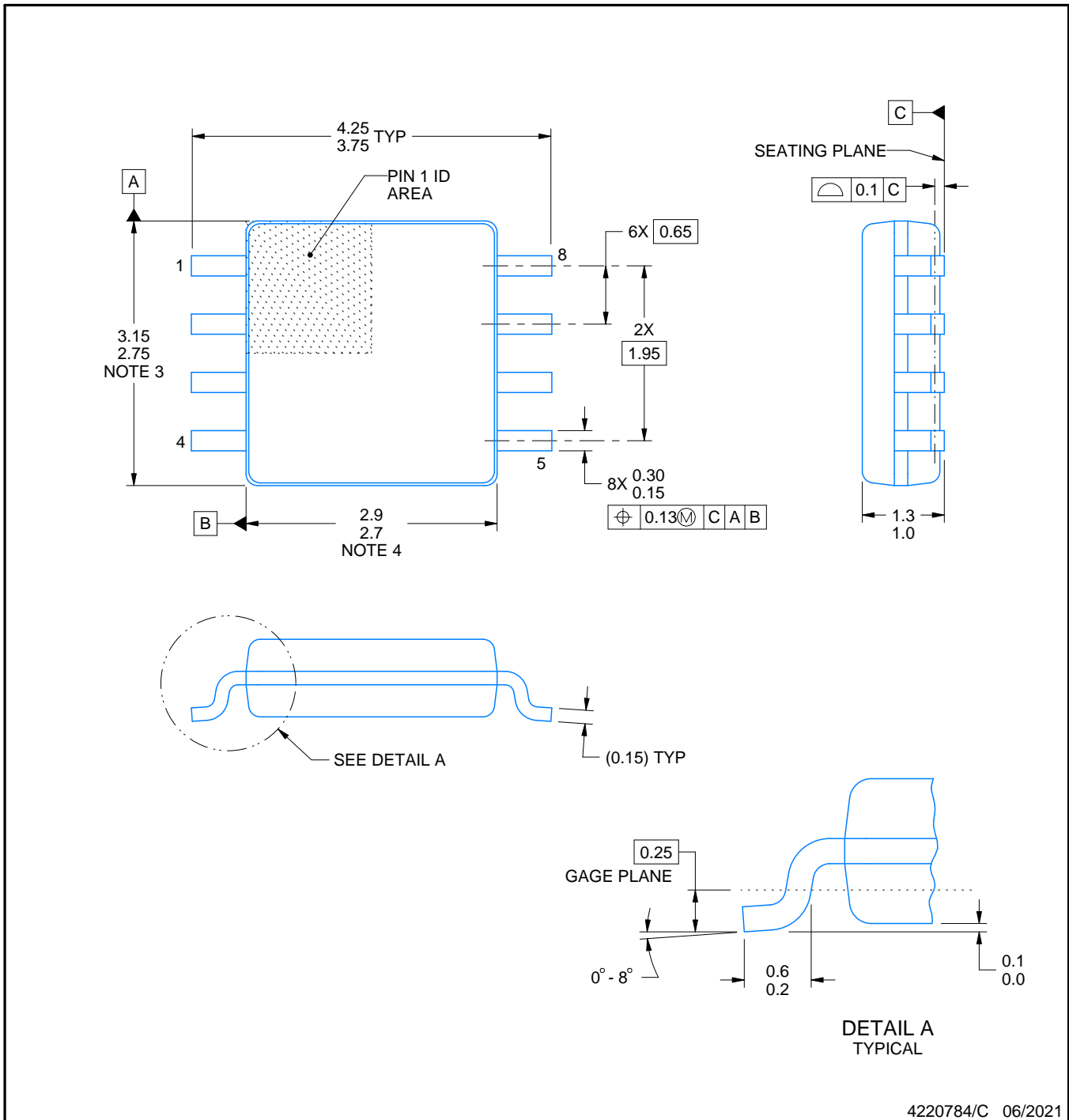
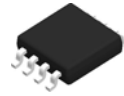

\*All dimensions are nominal

| Device          | Package Type | Package Drawing | Pins | SPQ  | Reel Diameter (mm) | Reel Width W1 (mm) | A0 (mm) | B0 (mm) | K0 (mm) | P1 (mm) | W (mm) | Pin1 Quadrant |
|-----------------|--------------|-----------------|------|------|--------------------|--------------------|---------|---------|---------|---------|--------|---------------|
| SN74AUP1G99DCTR | SM8          | DCT             | 8    | 3000 | 177.8              | 12.4               | 3.45    | 4.4     | 1.45    | 4.0     | 12.0   | Q3            |
| SN74AUP1G99DCTR | SM8          | DCT             | 8    | 3000 | 180.0              | 13.0               | 3.35    | 4.5     | 1.55    | 4.0     | 12.0   | Q3            |
| SN74AUP1G99DCTT | SM8          | DCT             | 8    | 250  | 177.8              | 12.4               | 3.45    | 4.4     | 1.45    | 4.0     | 12.0   | Q3            |
| SN74AUP1G99DCTT | SM8          | DCT             | 8    | 250  | 180.0              | 13.0               | 3.35    | 4.5     | 1.55    | 4.0     | 12.0   | Q3            |
| SN74AUP1G99DCUR | VSSOP        | DCU             | 8    | 3000 | 178.0              | 9.5                | 2.25    | 3.35    | 1.05    | 4.0     | 8.0    | Q3            |
| SN74AUP1G99DCUR | VSSOP        | DCU             | 8    | 3000 | 180.0              | 8.4                | 2.25    | 3.35    | 1.05    | 4.0     | 8.0    | Q3            |
| SN74AUP1G99DCUT | VSSOP        | DCU             | 8    | 250  | 178.0              | 9.5                | 2.25    | 3.35    | 1.05    | 4.0     | 8.0    | Q3            |
| SN74AUP1G99YZPR | DSBGA        | YZP             | 8    | 3000 | 178.0              | 9.2                | 1.02    | 2.02    | 0.63    | 4.0     | 8.0    | Q1            |

**TAPE AND REEL BOX DIMENSIONS**


\*All dimensions are nominal

| Device          | Package Type | Package Drawing | Pins | SPQ  | Length (mm) | Width (mm) | Height (mm) |
|-----------------|--------------|-----------------|------|------|-------------|------------|-------------|
| SN74AUP1G99DCTR | SM8          | DCT             | 8    | 3000 | 183.0       | 183.0      | 20.0        |
| SN74AUP1G99DCTR | SM8          | DCT             | 8    | 3000 | 182.0       | 182.0      | 20.0        |
| SN74AUP1G99DCTT | SM8          | DCT             | 8    | 250  | 183.0       | 183.0      | 20.0        |
| SN74AUP1G99DCTT | SM8          | DCT             | 8    | 250  | 182.0       | 182.0      | 20.0        |
| SN74AUP1G99DCUR | VSSOP        | DCU             | 8    | 3000 | 202.0       | 201.0      | 28.0        |
| SN74AUP1G99DCUR | VSSOP        | DCU             | 8    | 3000 | 202.0       | 201.0      | 28.0        |
| SN74AUP1G99DCUT | VSSOP        | DCU             | 8    | 250  | 202.0       | 201.0      | 28.0        |
| SN74AUP1G99YZPR | DSBGA        | YZP             | 8    | 3000 | 220.0       | 220.0      | 35.0        |



NOTES:

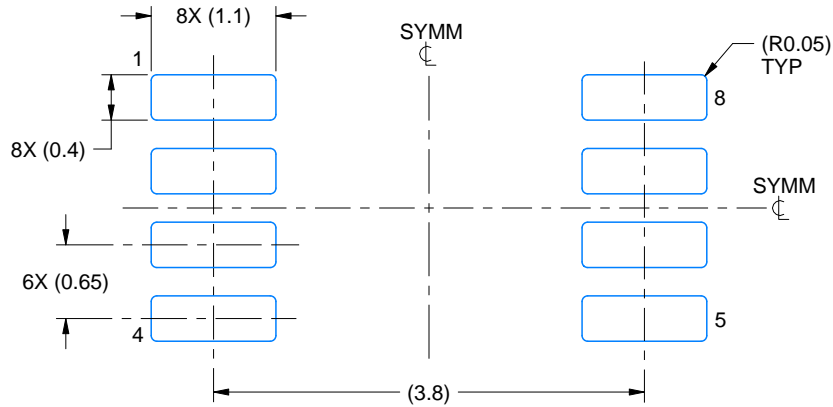
1. All linear dimensions are in millimeters. Dimensions in parenthesis are for reference only. Dimensioning and tolerancing per ASME Y14.5M.
2. This drawing is subject to change without notice.
3. This dimension does not include mold flash, protrusions, or gate burrs. Mold flash, protrusions, or gate burrs shall not exceed 0.15 mm per side.
4. This dimension does not include interlead flash. Interlead flash shall not exceed 0.25 mm per side.

# EXAMPLE BOARD LAYOUT

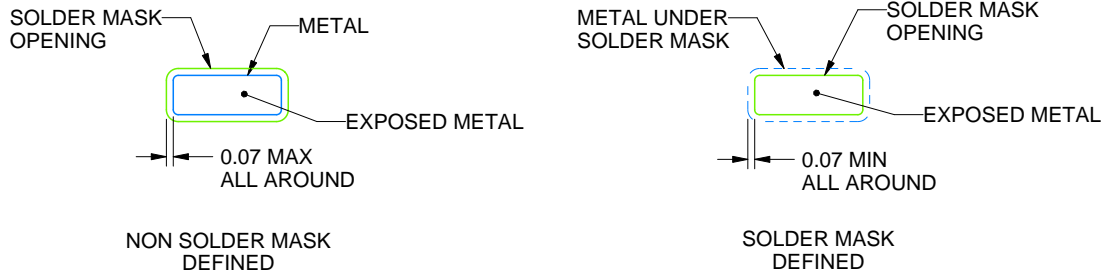
DCT0008A

SSOP - 1.3 mm max height

SMALL OUTLINE PACKAGE



LAND PATTERN EXAMPLE  
EXPOSED METAL SHOWN  
SCALE:15X



SOLDER MASK DETAILS

4220784/C 06/2021

NOTES: (continued)

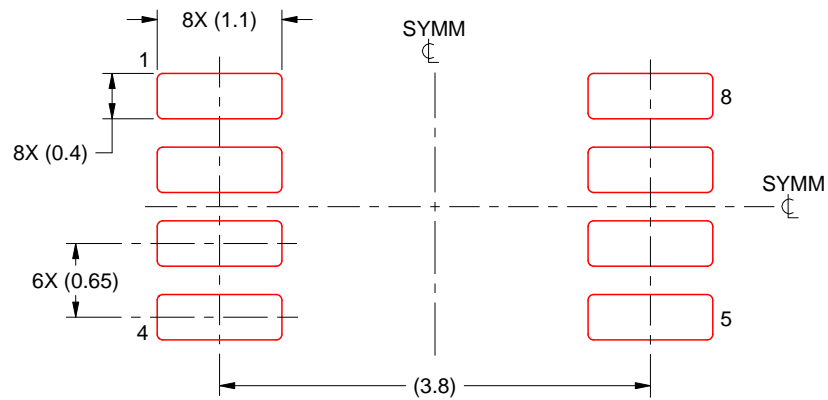
- 5. Publication IPC-7351 may have alternate designs.
- 6. Solder mask tolerances between and around signal pads can vary based on board fabrication site.

# EXAMPLE STENCIL DESIGN

DCT0008A

SSOP - 1.3 mm max height

SMALL OUTLINE PACKAGE



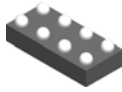
SOLDER PASTE EXAMPLE  
BASED ON 0.125 mm THICK STENCIL  
SCALE:15X

4220784/C 06/2021

NOTES: (continued)

7. Laser cutting apertures with trapezoidal walls and rounded corners may offer better paste release. IPC-7525 may have alternate design recommendations.
8. Board assembly site may have different recommendations for stencil design.

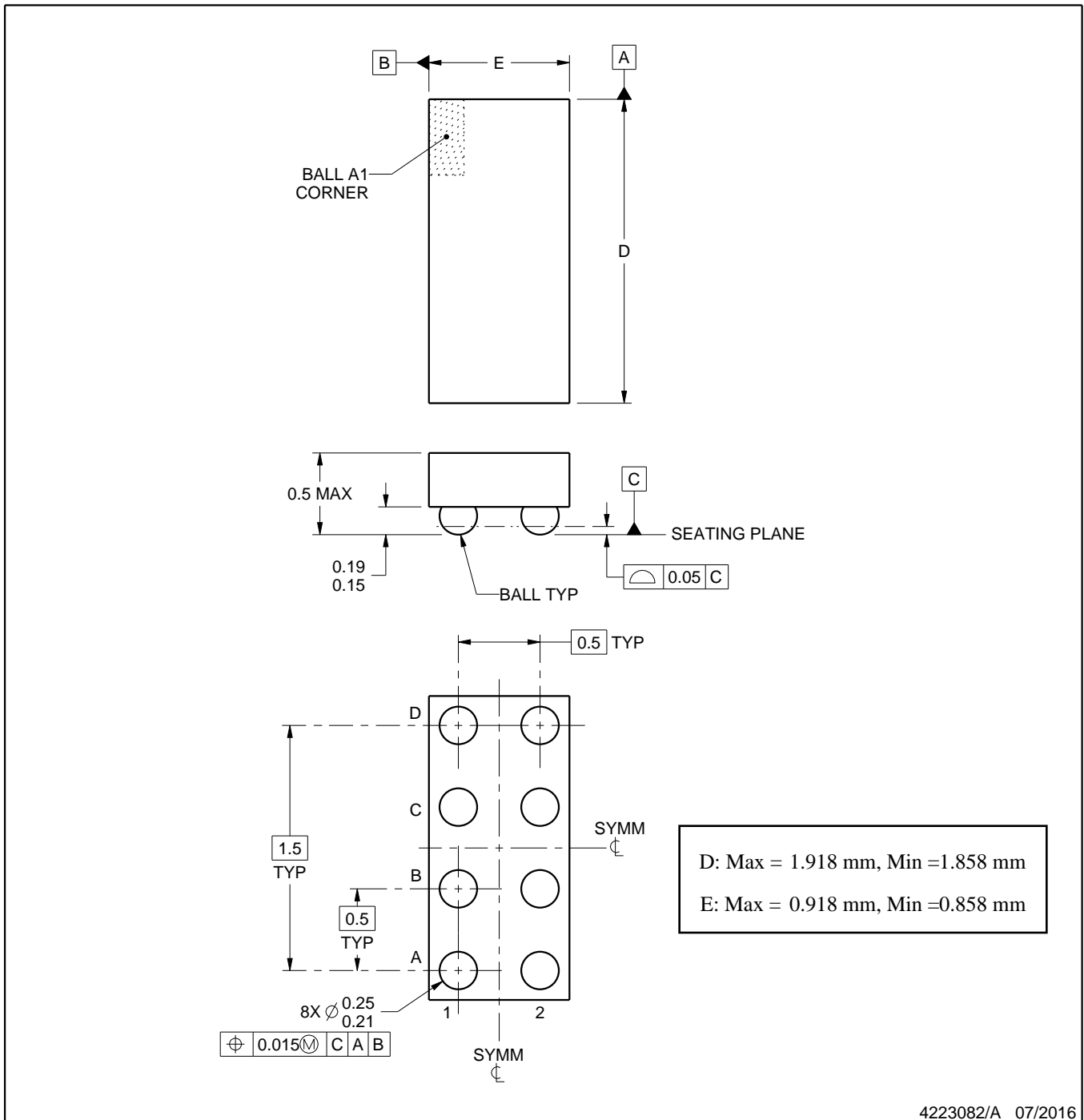
YZP0008



PACKAGE OUTLINE

DSBGA - 0.5 mm max height

DIE SIZE BALL GRID ARRAY



4223082/A 07/2016

NOTES:

1. All linear dimensions are in millimeters. Any dimensions in parenthesis are for reference only. Dimensioning and tolerancing per ASME Y14.5M.
2. This drawing is subject to change without notice.

# EXAMPLE BOARD LAYOUT

YZP0008

DSBGA - 0.5 mm max height

DIE SIZE BALL GRID ARRAY



LAND PATTERN EXAMPLE  
SCALE:40X



SOLDER MASK DETAILS  
NOT TO SCALE

4223082/A 07/2016

NOTES: (continued)

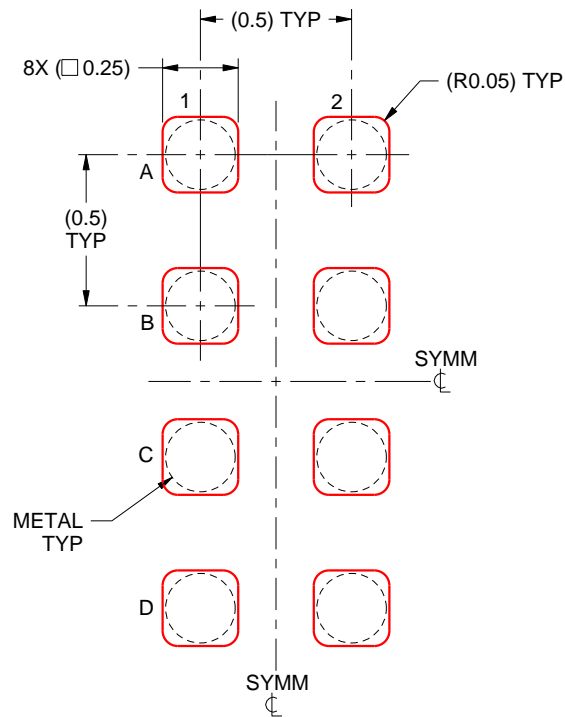
- Final dimensions may vary due to manufacturing tolerance considerations and also routing constraints. For more information, see Texas Instruments literature number SNVA009 ([www.ti.com/lit/snva009](http://www.ti.com/lit/snva009)).

# EXAMPLE STENCIL DESIGN

YZP0008

DSBGA - 0.5 mm max height

DIE SIZE BALL GRID ARRAY



SOLDER PASTE EXAMPLE  
BASED ON 0.1 mm THICK STENCIL  
SCALE:40X

4223082/A 07/2016

NOTES: (continued)

4. Laser cutting apertures with trapezoidal walls and rounded corners may offer better paste release.

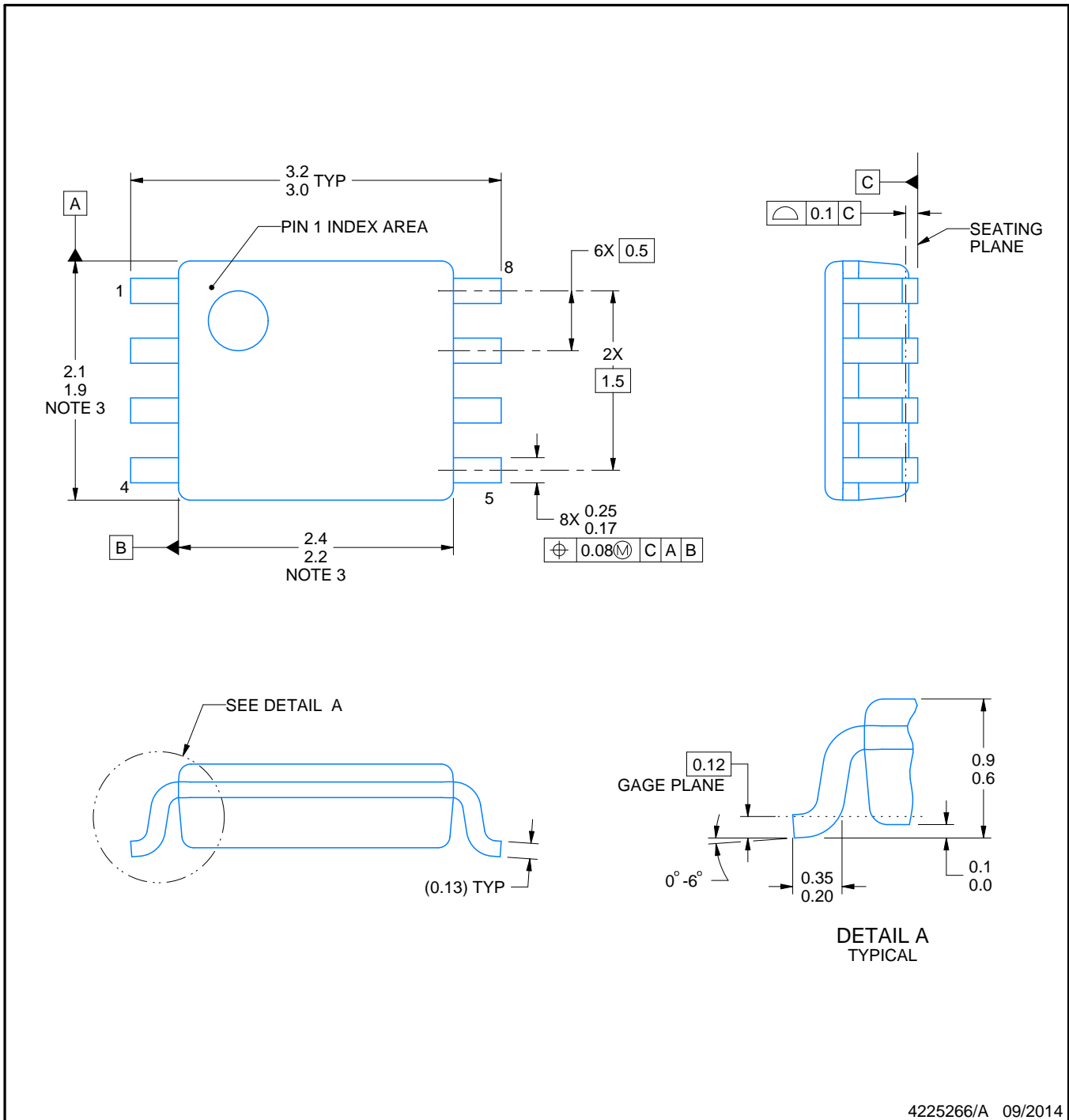
# DCU0008A



# PACKAGE OUTLINE

## VSSOP - 0.9 mm max height

SMALL OUTLINE PACKAGE



4225266/A 09/2014

**NOTES:**

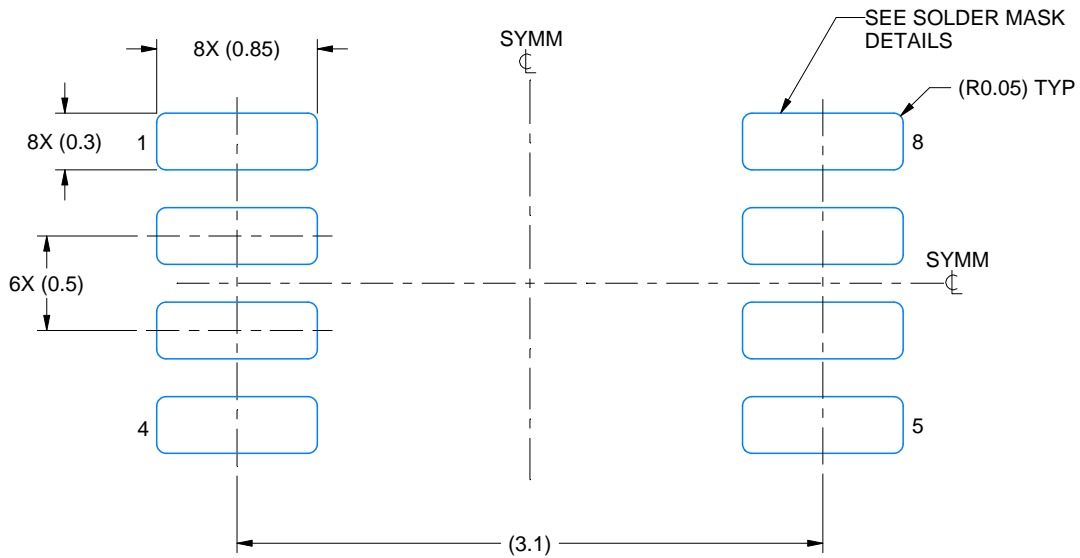
- All linear dimensions are in millimeters. Any dimensions in parenthesis are for reference only. Dimensioning and tolerancing per ASME Y14.5M.
- This drawing is subject to change without notice.
- This dimension does not include mold flash, protrusions, or gate burrs. Mold flash, protrusions, or gate burrs shall not exceed 0.15 mm per side.
- Reference JEDEC registration MO-187 variation CA.

# EXAMPLE BOARD LAYOUT

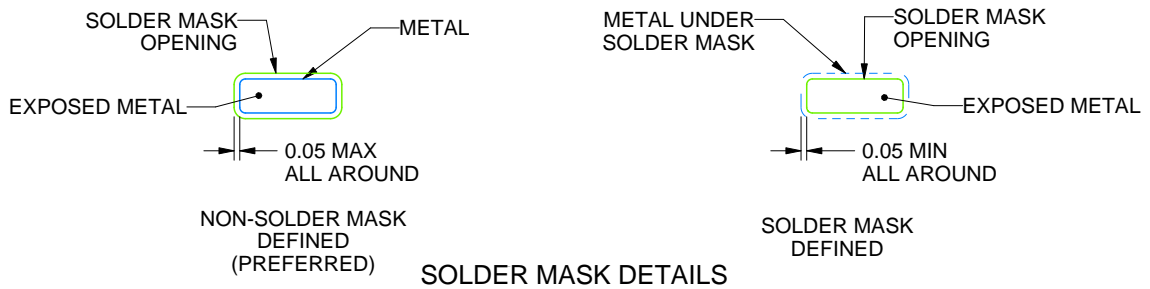
DCU0008A

VSSOP - 0.9 mm max height

SMALL OUTLINE PACKAGE



LAND PATTERN EXAMPLE  
EXPOSED METAL SHOWN  
SCALE: 25X



4225266/A 09/2014

NOTES: (continued)

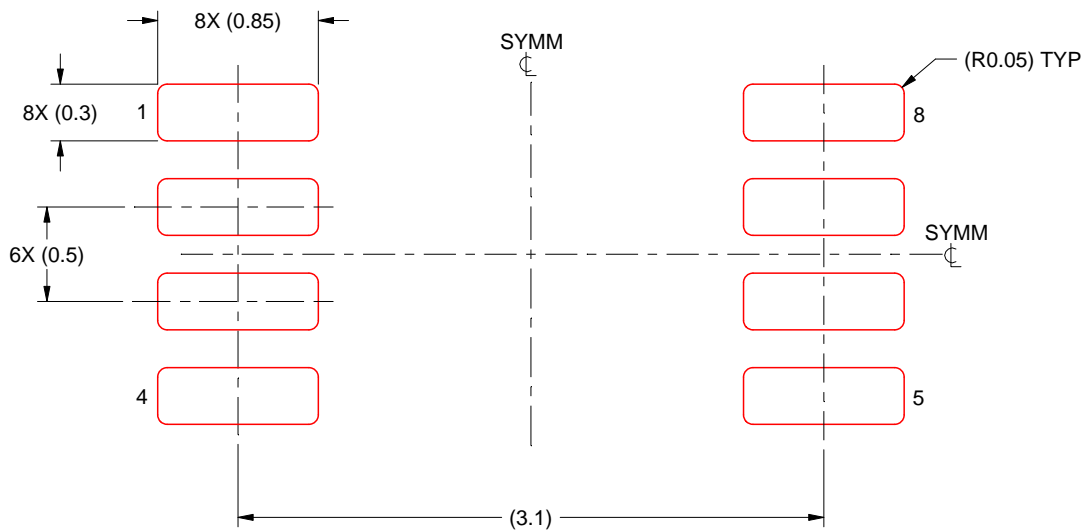
- 5. Publication IPC-7351 may have alternate designs.
- 6. Solder mask tolerances between and around signal pads can vary based on board fabrication site.

# EXAMPLE STENCIL DESIGN

DCU0008A

VSSOP - 0.9 mm max height

SMALL OUTLINE PACKAGE



SOLDER PASTE EXAMPLE  
BASED ON 0.125 mm THICK STENCIL  
SCALE: 25X

4225266/A 09/2014

NOTES: (continued)

7. Laser cutting apertures with trapezoidal walls and rounded corners may offer better paste release. IPC-7525 may have alternate design recommendations.
8. Board assembly site may have different recommendations for stencil design.

## IMPORTANT NOTICE AND DISCLAIMER

TI PROVIDES TECHNICAL AND RELIABILITY DATA (INCLUDING DATA SHEETS), DESIGN RESOURCES (INCLUDING REFERENCE DESIGNS), APPLICATION OR OTHER DESIGN ADVICE, WEB TOOLS, SAFETY INFORMATION, AND OTHER RESOURCES "AS IS" AND WITH ALL FAULTS, AND DISCLAIMS ALL WARRANTIES, EXPRESS AND IMPLIED, INCLUDING WITHOUT LIMITATION ANY IMPLIED WARRANTIES OF MERCHANTABILITY, FITNESS FOR A PARTICULAR PURPOSE OR NON-INFRINGEMENT OF THIRD PARTY INTELLECTUAL PROPERTY RIGHTS.

These resources are intended for skilled developers designing with TI products. You are solely responsible for (1) selecting the appropriate TI products for your application, (2) designing, validating and testing your application, and (3) ensuring your application meets applicable standards, and any other safety, security, regulatory or other requirements.

These resources are subject to change without notice. TI grants you permission to use these resources only for development of an application that uses the TI products described in the resource. Other reproduction and display of these resources is prohibited. No license is granted to any other TI intellectual property right or to any third party intellectual property right. TI disclaims responsibility for, and you will fully indemnify TI and its representatives against, any claims, damages, costs, losses, and liabilities arising out of your use of these resources.

TI's products are provided subject to [TI's Terms of Sale](#) or other applicable terms available either on [ti.com](https://www.ti.com) or provided in conjunction with such TI products. TI's provision of these resources does not expand or otherwise alter TI's applicable warranties or warranty disclaimers for TI products.

TI objects to and rejects any additional or different terms you may have proposed.

Mailing Address: Texas Instruments, Post Office Box 655303, Dallas, Texas 75265  
Copyright © 2024, Texas Instruments Incorporated

## Looking for pricing, stock, or lifecycle information?

Click below to explore more details on WIN SOURCE:

 [View SN74AUP1G99DCUTE4 on WIN SOURCE](#)

 [Texas Instruments](#) Information

## Optimize Your Supply Chain with WIN SOURCE Solutions

-  Global Sourcing Solution
-  Obsolete Management
-  Cost Control Management
-  Shortage Management
-  Alternative Solution
-  Excess Inventory Management