



**THE DATASHEET OF
CY7C135-15JXC**



4K × 8 Dual-Port Static RAM

Features

- True dual-ported memory cells, which allow simultaneous reads of the same memory location
- 4K × 8 organization
- 0.65 micron CMOS for optimum speed and power
- High speed access: 15 ns
- Low operating power: I_{CC} = 180 mA (max)
- Fully asynchronous operation
- Automatic power down
- Available in 52-pin plastic leaded chip carrier (PLCC)
- Pb-free packages available

Functional Description

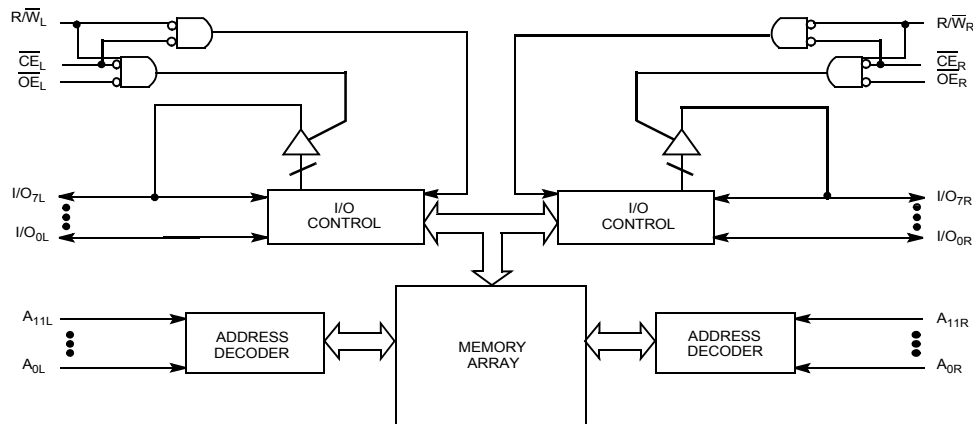
The CY7C135 is a high speed CMOS 4K × 8 dual-port static RAMs. Two ports are provided permitting independent, asynchronous access for reads and writes to any location in memory. Application areas include interprocessor/multiprocessor designs, communications status buffering, and dual-port video/graphics memory.

Each port has independent control pins: chip enable (\overline{CE}), read or write enable (R/W), and output enable (\overline{OE}). The CY7C135 is suited for those systems that do not require on-chip arbitration or are intolerant of wait states. Therefore, the user must be aware that simultaneous access to a location is possible. An automatic power down feature is controlled independently on each port by a chip enable (\overline{CE}) pin.

The CY7C135 is available in 52-pin PLCC.

For a complete list of related documentation, [click here](#).

Logic Block Diagram



Contents

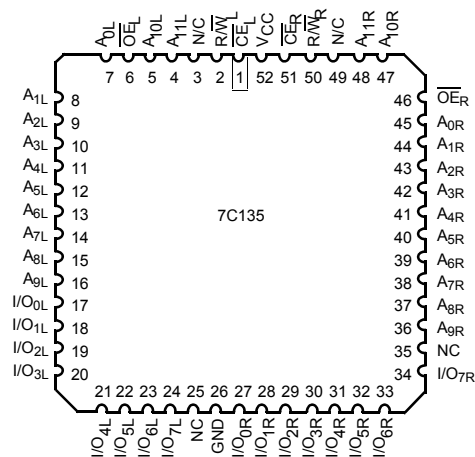
Selection Guide	3	Ordering Information	11
Pin Configurations	3	4K × 8 Dual-Port SRAM	11
Pin Definitions	3	Ordering Code Definitions	11
Architecture	4	Package Diagram	12
Functional Description	4	Acronyms	13
Write Operation	4	Document Conventions	13
Read Operation	4	Units of Measure	13
Maximum Ratings	5	Document History Page	14
Operating Range	5	Sales, Solutions, and Legal Information	16
Electrical Characteristics	5	Worldwide Sales and Design Support	16
Capacitance	6	Products	16
AC Test Loads and Waveforms	6	PSoC@Solutions	16
Switching Characteristics	7	Cypress Developer Community	16
Switching Waveforms	8	Technical Support	16
Typical DC and AC Characteristics	10		

Selection Guide

Parameter		7C135-15	Unit
Maximum access time		15	ns
Maximum operating current	Commercial	220	mA
Maximum standby current for I _{SB1}	Commercial	60	mA

Pin Configurations

Figure 1. 52-pin PLCC pinout (Top View)



Pin Definitions

Left Port	Right Port	Description
A _{0L-11L}	A _{0R-11R}	Address lines
\overline{CE}_L	\overline{CE}_R	Chip Enable
\overline{OE}_L	\overline{OE}_R	Output Enable
$\overline{R/W}_L$	$\overline{R/W}_R$	Read/Write Enable

Architecture

The CY7C135 consists of an array of 4K words of 8 bits each of dual-port RAM cells, I/O and address lines, and control signals (CE, OE, R/W).

Functional Description

Write Operation

Data must be set up for a duration of t_{SD} before the rising edge of R/W to guarantee a valid write. Because there is no on-chip arbitration, the user must be sure that a specific location is not accessed simultaneously by both ports or erroneous data could result. A write operation is controlled by either the OE pin (see Figure 6 on page 9) or the R/W pin (see Figure 7 on page 9). Data can be written t_{HZOE} after the OE is deasserted or t_{HZWE} after the falling edge of R/W. Required inputs for write operations are summarized in Table 1.

If a location is being written to by one port and the opposite port attempts to read the same location, a port-to-port flowthrough delay is met before the data is valid on the output. Data is valid

on the port wishing to read the location t_{DD} after the data is presented on the writing port.

Read Operation

When reading the device, the user must assert both the OE and CE pins. Data is available t_{ACE} after CE or t_{DOE} after OE are asserted. Required inputs for read operations are summarized in Table 1.

Table 1. Non-Contending Read/Write

Inputs			Outputs	Operation
CE	R/W	OE	I/O ₀ -I/O ₇	
H	X	X	High Z	Power-down
X	X	H	High Z	I/O Lines disabled
L	H	L	Data out	Read
L	L	X	Data in	Write

Maximum Ratings

Exceeding maximum ratings ^[1] may shorten the useful life of the device. User guidelines are not tested.

Storage temperature	-65 °C to +150 °C
Ambient temperature with power applied	-55 °C to +125 °C
Supply voltage to ground potential (Pin 48 to Pin 24)	-0.5 V to +7.0 V
DC voltage applied to outputs in High Z state	-0.5 V to +7.0 V

DC input voltage ^[2]	-3.0 V to +7.0 V
Static discharge voltage (per MIL-STD-883, Method 3015)	> 2001 V
Latch up current	> 200 mA

Operating Range

Range	Ambient Temperature	V _{CC}
Commercial	0 °C to +70 °C	5 V ± 10%
Industrial	-40 °C to +85 °C	5 V ± 10%

Electrical Characteristics

Over the Operating Range

Parameter	Description	Test Conditions	7C135-15		Unit	
			Min	Max		
V _{OH}	Output HIGH voltage	V _{CC} = Min, I _{OH} = -4.0 mA	2.4	-	V	
V _{OL}	Output LOW voltage	V _{CC} = Min, I _{OL} = 4.0 mA	-	0.4	V	
V _{IH}	Input HIGH voltage		2.2	-	V	
V _{IL}	Input LOW voltage		-	0.8	V	
I _{IX}	Input load current	GND ≤ V _I ≤ V _{CC}	-10	+10	μA	
I _{OZ}	Output leakage current	Outputs disabled, GND ≤ V _O ≤ V _{CC}	-10	+10	μA	
I _{CC}	Operating current	V _{CC} = Max, I _{OUT} = 0 mA	Commercial	-	220	mA
			Industrial	-	-	
I _{SB1}	Standby current (Both ports TTL levels)	\overline{CE}_L and $\overline{CE}_R \geq V_{IH}$, f = f _{MAX} ^[3]	Commercial	-	60	mA
			Industrial	-	-	
I _{SB2}	Standby current (One port TTL level)	\overline{CE}_L and $\overline{CE}_R \geq V_{IH}$, f = f _{MAX} ^[3]	Commercial	-	130	mA
			Industrial	-	-	
I _{SB3}	Standby current (Both ports CMOS levels)	Both ports \overline{CE} and $\overline{CE}_R \geq V_{CC} - 0.2$ V, V _{IN} ≥ V _{CC} - 0.2 V or V _{IN} ≤ 0.2 V, f = 0 ^[3]	Commercial	-	15	mA
			Industrial	-	-	
I _{SB4}	Standby current (One port CMOS level)	One port \overline{CE}_L or $\overline{CE}_R \geq V_{CC} - 0.2$ V, V _{IN} ≥ V _{CC} - 0.2 V or V _{IN} ≤ 0.2 V, Active port outputs, f = f _{MAX} ^[3]	Commercial	-	125	mA
			Industrial	-	-	

Notes

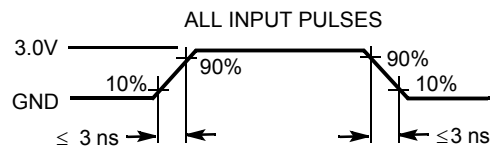
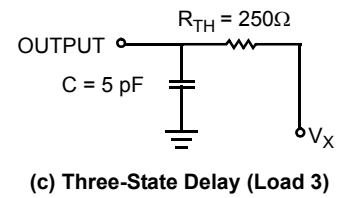
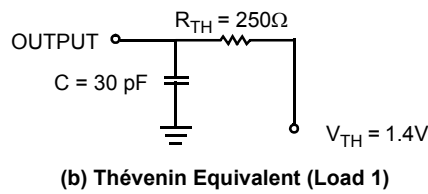
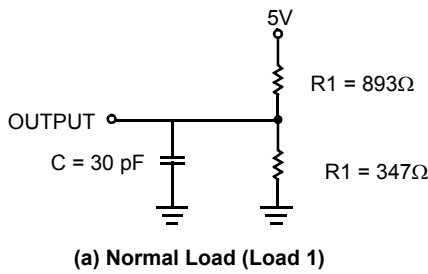
- The voltage on any input or I/O pin cannot exceed the power pin during power up.
- Pulse width < 20 ns.
- f_{MAX} = 1/t_{RC} = All inputs cycling at f = 1/t_{RC} (except output enable). f = 0 means no address or control lines change. This applies only to inputs at CMOS level standby I_{SB3}.

Capacitance

Parameter ^[4]	Description	Test Conditions	Max	Unit
C _{IN}	Input capacitance	T _A = 25 °C, f = 1 MHz, V _{CC} = 5.0 V	10	pF
C _{OUT}	Output capacitance		10	pF

AC Test Loads and Waveforms

Figure 2. AC Test Loads and Waveforms



Note

4. Tested initially and after any design or process changes that may affect these parameters.

Switching Characteristics

Over the Operating Range

Parameter ^[5]	Description	7C135-15		Unit
		Min	Max	
Read Cycle				
t_{RC}	Read cycle time	15	–	ns
t_{AA}	Address to data valid	–	15	ns
t_{OHA}	Output hold from address change	3	–	ns
t_{ACE}	\overline{CE} LOW to data valid	–	15	ns
t_{DOE}	\overline{OE} LOW to data valid	–	10	ns
$t_{LZOE}^{[6, 7, 8]}$	\overline{OE} Low to Low Z	3	–	ns
$t_{HZOE}^{[6, 7, 8]}$	\overline{OE} HIGH to High Z	–	10	ns
$t_{LZCE}^{[6, 7, 8]}$	\overline{CE} LOW to Low Z	3	–	ns
$t_{HZCE}^{[6, 7, 8]}$	\overline{CE} HIGH to High Z	–	10	ns
$t_{PU}^{[8]}$	\overline{CE} LOW to Power-up	0	–	ns
$t_{PD}^{[8]}$	\overline{CE} HIGH to Power-down	–	15	ns
Write Cycle				
t_{WC}	Write cycle time	15	–	ns
t_{SCE}	\overline{CE} LOW to Write End	12	–	ns
t_{AW}	Address setup to Write End	12	–	ns
t_{HA}	Address hold from Write End	2	–	ns
t_{SA}	Address setup to Write Start	0	–	ns
t_{PWE}	Write pulse width	12	–	ns
t_{SD}	Data setup to Write End	10	–	ns
t_{HD}	Data hold from Write End	0	–	ns
$t_{HZWE}^{[7, 8]}$	R/ \overline{W} LOW to High Z	–	10	ns
$t_{LZWE}^{[7, 8]}$	R/ \overline{W} HIGH to Low Z	3	–	ns
$t_{WDD}^{[9]}$	Write pulse to data delay	–	30	ns
$t_{DDD}^{[9]}$	Write data valid to read data valid	–	25	ns

Notes

5. Test conditions assume signal transition time of 3 ns or less, timing reference levels of 1.5 V, input pulse levels of 0 to 3.0 V, and output loading of the specified I_{OL}/I_{OH} and 30 pF load capacitance.
6. At any given temperature and voltage condition for any given device, t_{HZCE} is less than t_{LZCE} and t_{HZOE} is less than t_{LZOE} .
7. Test conditions used are Load 3.
8. This parameter is guaranteed but not tested.
9. For information on port-to-port delay through RAM cells from writing port to reading port, refer to [Figure 5](#) on page 8.

Switching Waveforms

Figure 3. Read Cycle No. 1 [10, 11]

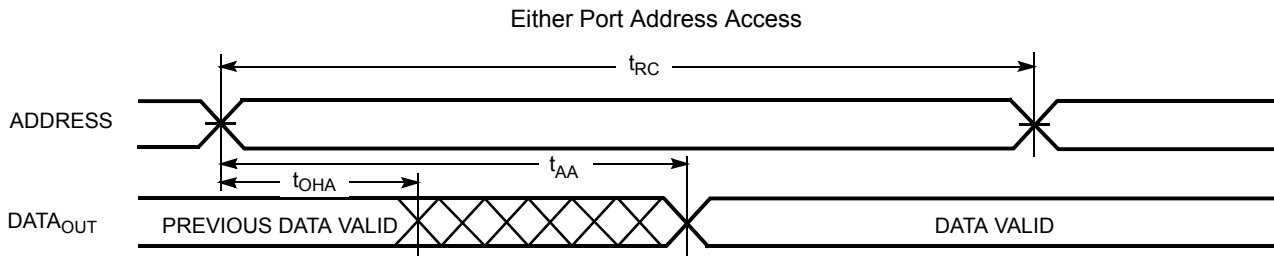


Figure 4. Read Cycle No. 2 [10, 12]

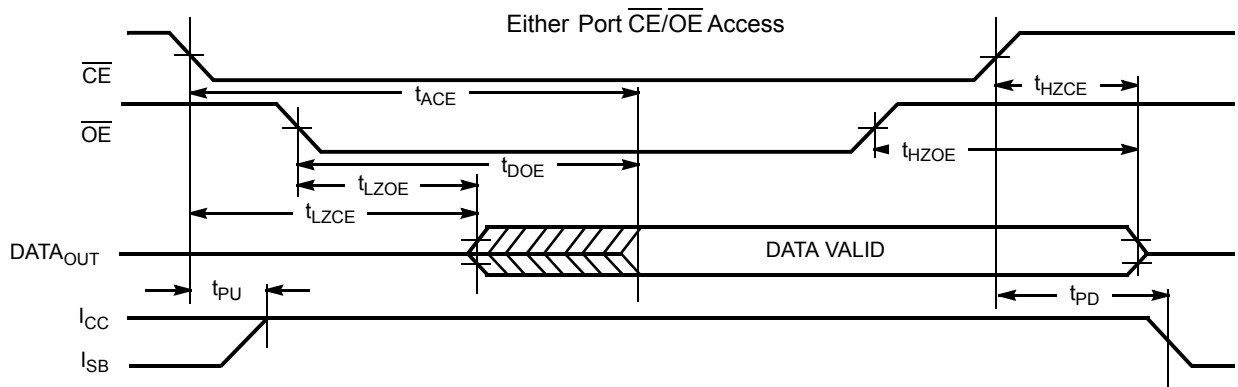
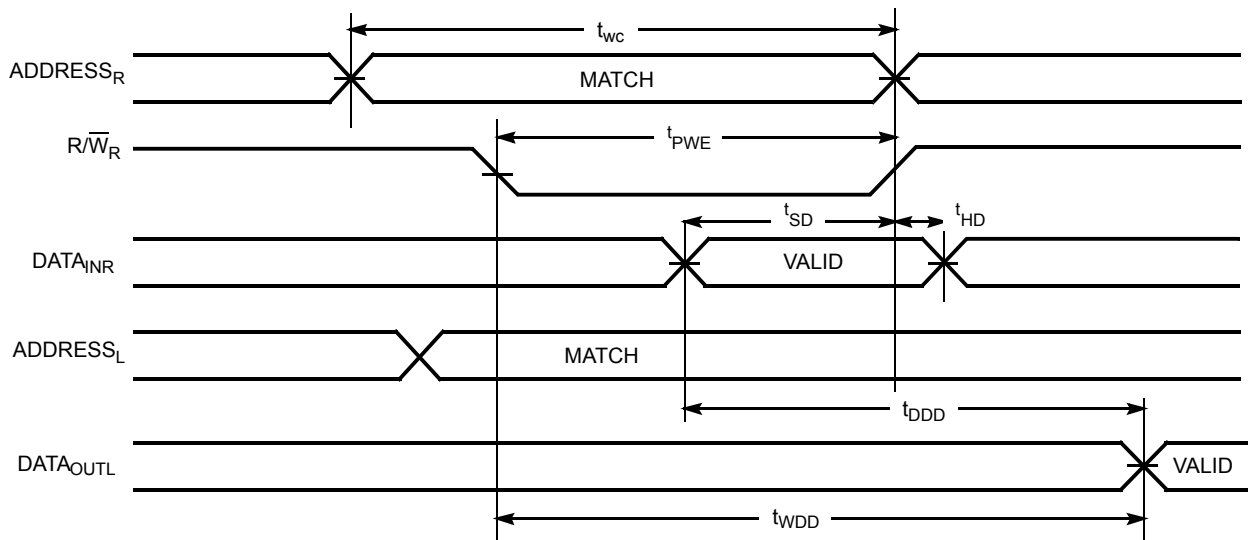


Figure 5. Read Timing with Port-to-Port [13]



Notes

- 10. R/ \overline{W} is HIGH for read cycle.
- 11. Device is continuously selected, $\overline{CE} = V_{IL}$ and $\overline{OE} = V_{IL}$.
- 12. Address valid prior to or coincident with \overline{CE} transition LOW.
- 13. $\overline{CE}_L = \overline{CE}_R = \text{LOW}$; $R/\overline{W}_L = \text{HIGH}$.

Switching Waveforms (continued)

Figure 6. Write Cycle No. 1: \overline{OE} Three-States Data I/Os (Either Port) [14, 15, 16]

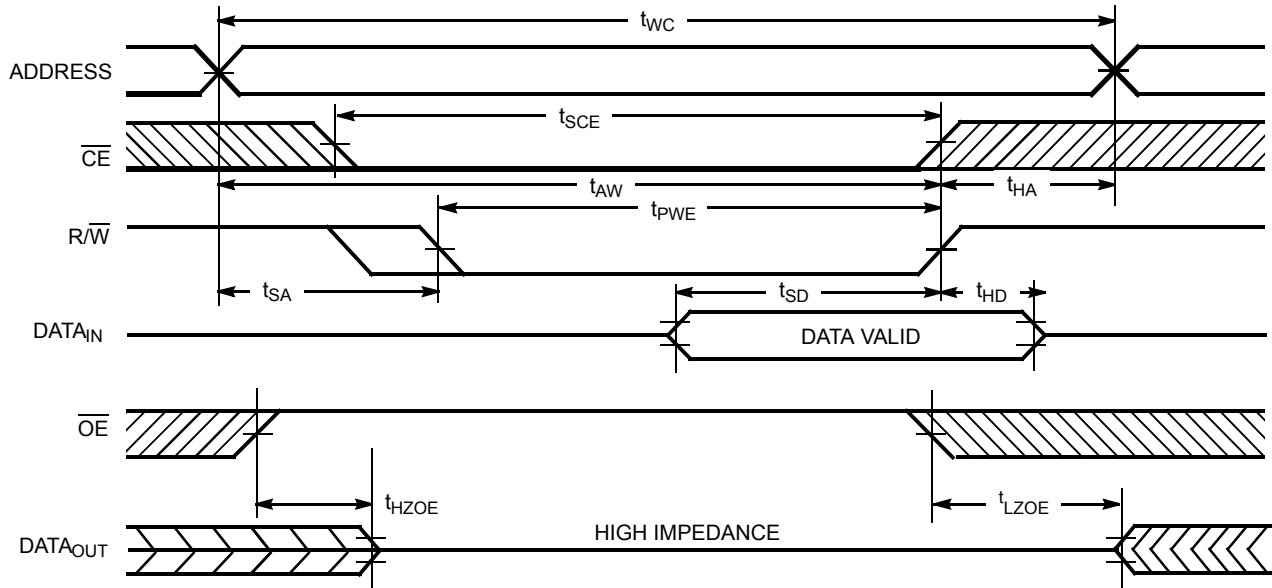
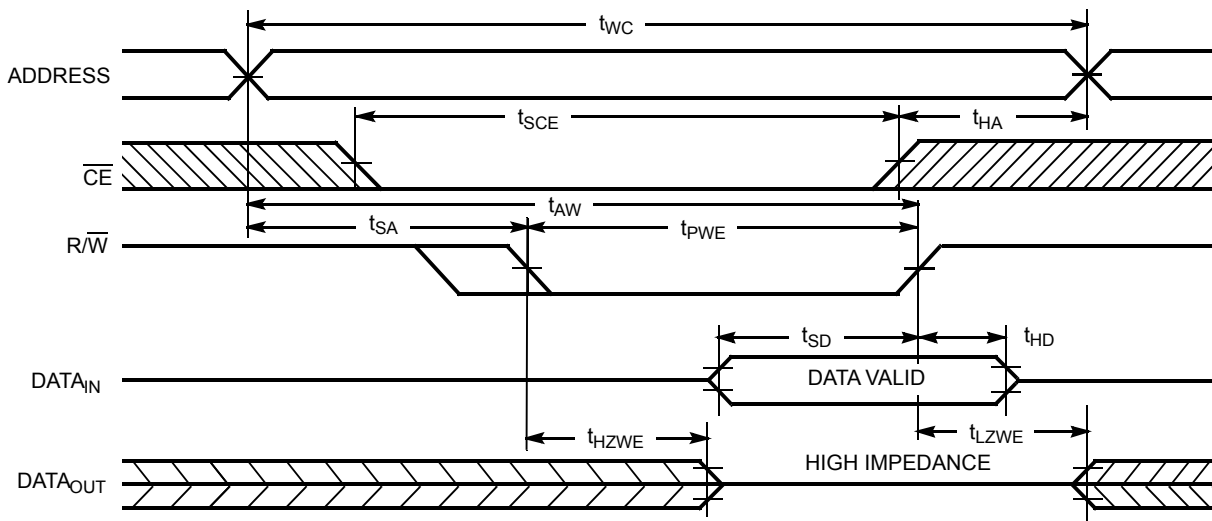


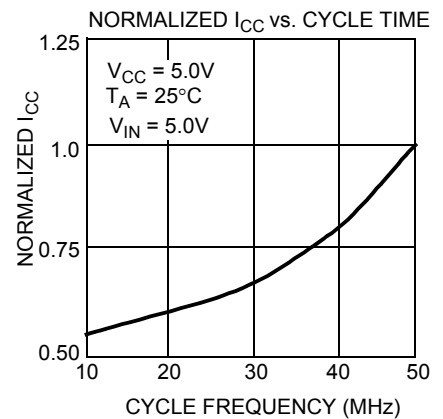
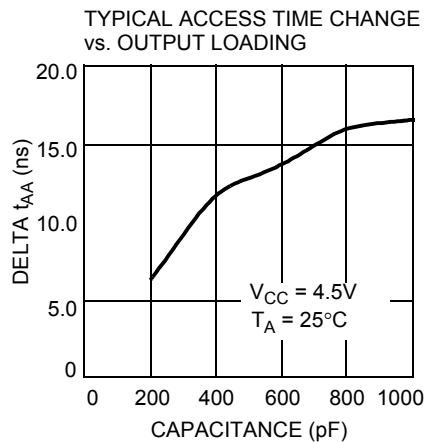
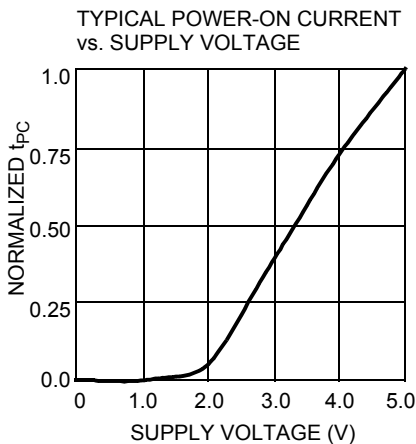
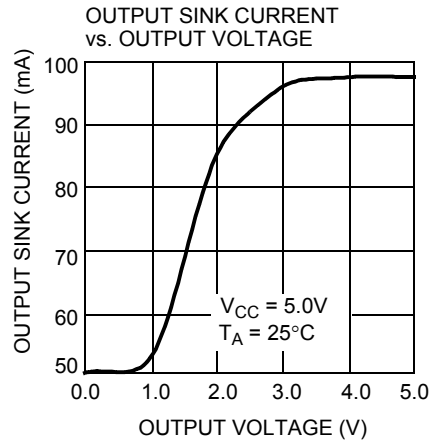
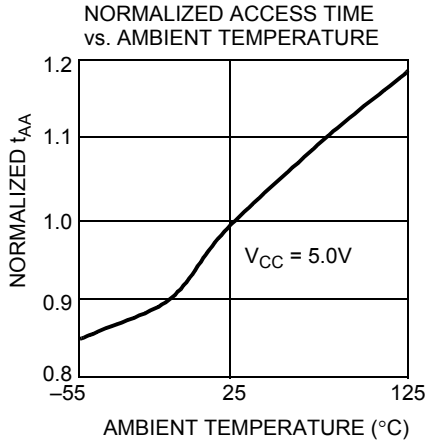
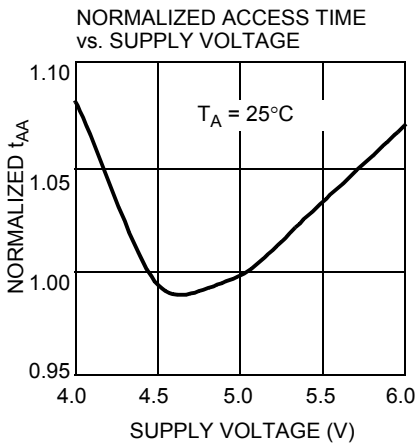
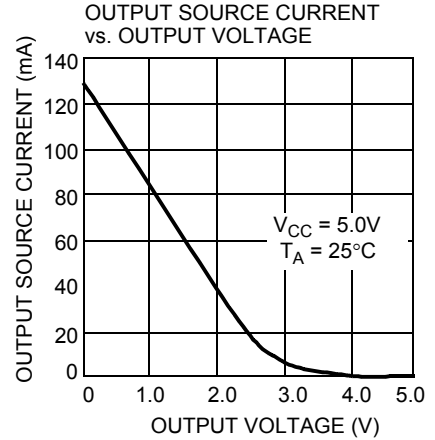
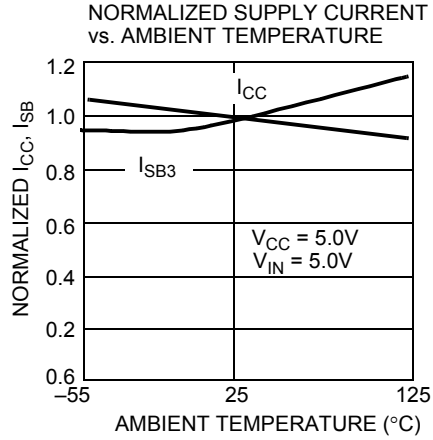
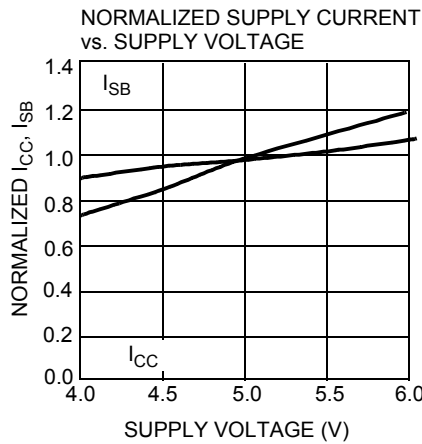
Figure 7. Write Cycle No. 2: R/\overline{W} Three-States Data I/Os (Either Port) [15, 17]



Notes

- 14. The internal write time of the memory is defined by the overlap of \overline{CE} and R/\overline{W} LOW. Both signals must be LOW to initiate a write and either signal can terminate a write by going HIGH. The data input setup and hold timing should be referenced to the rising edge of the signal that terminates the write.
- 15. R/\overline{W} must be HIGH during all address transactions.
- 16. If \overline{OE} is LOW during a R/\overline{W} controlled write cycle, the write pulse width must be the larger of t_{PWE} or $(t_{HZWE} + t_{SD})$ to allow the I/O drivers to turn off and data to be placed on the bus for the required t_{SD} . If \overline{OE} is HIGH during a R/\overline{W} controlled write cycle (as in this example), this requirement does not apply and the write pulse can be as short as the specified t_{PWE} .
- 17. Data I/O pins enter high impedance when \overline{OE} is held LOW during write.

Typical DC and AC Characteristics

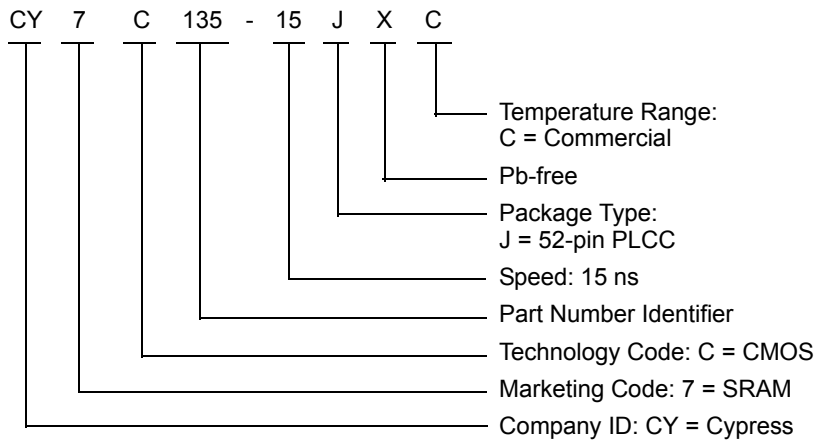


Ordering Information

4K × 8 Dual-Port SRAM

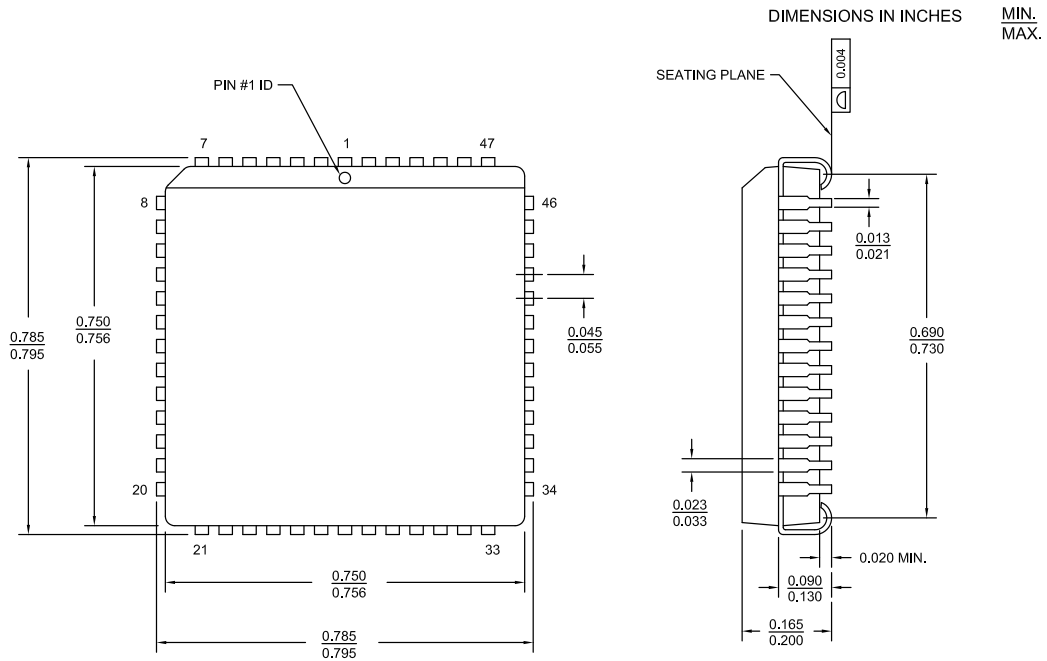
Speed (ns)	Ordering Code	Package Diagram	Package Type	Operating Range
15	CY7C135-15JXC	51-85004	52-pin PLCC (Pb-free)	Commercial

Ordering Code Definitions



Package Diagram

Figure 8. 52-pin PLCC (0.756 × 0.756 Inches) J52 Package Outline, 51-85004



51-85004 *D

Acronyms

Acronym	Description
CMOS	Complementary Metal Oxide Semiconductor
I/O	Input/Output
PLCC	Plastic Leaded Chip Carrier
SRAM	Static Random Access Memory
TQFP	Thin Quad Flat Pack

Document Conventions

Units of Measure

Symbol	Unit of Measure
°C	degree Celsius
MHz	megahertz
μA	microampere
mA	milliampere
mV	millivolt
ns	nanosecond
Ω	ohm
pF	picofarad
V	volt
W	watt

Document History Page

Document Title: CY7C135, 4K × 8 Dual-Port Static RAM Document Number: 38-06038				
Rev.	ECN No.	Orig. of Change	Submission Date	Description of Change
**	110181	SZV	10/21/01	Change from Spec number: 38-00541 to 38-06038
*A	122288	RBI	12/27/02	Updated Maximum Ratings : Added Power up requirements (Added Note 1 and referred the same in maximum ratings).
*B	236763	YDT	SEE ECN	Updated Features : Removed "Pin-compatible and functionally equivalent to IDT7134/IDT71342".
*C	393413	YIM	See ECN	Added Pb-free Logo. Updated Ordering Information : Added Pb-free parts (CY7C135-15JXC, CY7C135-25JXC).
*D	2623540	VKN / PYRS	12/17/08	Updated Ordering Information : Added CY7C135A parts. Removed CY7C1342 from the ordering information table.
*E	2897217	RAME	03/22/2010	Updated Ordering Information . Updated Package Diagram .
*F	3081925	ADMU	11/10/2010	Added Ordering Code Definitions under Ordering Information . Added Acronyms and Units of Measure . Updated to new template
*G	3805117	SMCH	11/07/2012	Updated Document Title to read as "CY7C135, 4 K × 8 Dual-Port Static RAM". Updated Features (Changed value of I _{CC} from 160 mA to 180 mA, removed CY7C1342 related information). Updated Functional Description (Removed CY7C135A, CY7C1342 related information, removed the Note "CY7C135 and CY7C135A are functionally identical" and its reference). Updated Logic Block Diagram (Removed Semaphore Arbitration (related to CY7C1342)). Updated Selection Guide (Removed CY7C135A, CY7C1342 related information, removed 20 ns, 35 ns, 55 ns speed bins related information). Updated Pin Configurations (Removed CY7C135A, CY7C1342 related information). Updated Pin Definitions (Removed $\overline{\text{SEM}}$ (related to CY7C1342)). Updated Architecture (Removed CY7C135A, CY7C1342 related information). Updated Functional Description (Updated Read Operation (Removed CY7C1342 related information), removed Semaphore Operation, updated Table 1 (Removed CY7C1342 related information), removed the table "Semaphore Operation Example"). Updated Electrical Characteristics (Removed CY7C135A, CY7C1342 related information, removed 20 ns speed bin related information). Removed Electrical Characteristics (Corresponding to CY7C135 and CY7C1342 with 35 ns, 55 ns speed bins). Updated Switching Characteristics (Removed CY7C135A, CY7C1342 related information, removed 20 ns, 35 ns, 55 ns speed bins related information, removed the Note "Semaphore timing applies only to CY7C1342." and its reference). Updated Switching Waveforms (Removed CY7C135A, CY7C1342 related information). Updated Package Diagram (spec 51-85004 (Changed revision from *B to *C)).
*H	4202909	SMCH	11/26/2013	Updated Ordering Information (Updated part numbers). Updated Package Diagram : spec 51-85004 – Changed revision from *C to *D. Updated to new template. Completing Sunset Review.

Document History Page (continued)

Document Title: CY7C135, 4K × 8 Dual-Port Static RAM Document Number: 38-06038				
Rev.	ECN No.	Orig. of Change	Submission Date	Description of Change
*I	4264122	SMCH	01/27/2014	Removed 25 ns speed bin related information across the document.
*J	4580622	SMCH	11/26/2014	Updated Functional Description : Added "For a complete list of related documentation, click here. " at the end.
*K	5506734	NILE	11/04/2016	Updated Ordering Information : No change in part numbers. Removed column "Package Name". Added a column "Package Diagram". Updated to new template. Completing Sunset Review.

Sales, Solutions, and Legal Information

Worldwide Sales and Design Support

Cypress maintains a worldwide network of offices, solution centers, manufacturer's representatives, and distributors. To find the office closest to you, visit us at [Cypress Locations](#).

Products

ARM® Cortex® Microcontrollers	cypress.com/arm
Automotive	cypress.com/automotive
Clocks & Buffers	cypress.com/clocks
Interface	cypress.com/interface
Internet of Things	cypress.com/iot
Lighting & Power Control	cypress.com/powerpsoc
Memory	cypress.com/memory
PSoC	cypress.com/psoc
Touch Sensing	cypress.com/touch
USB Controllers	cypress.com/usb
Wireless/RF	cypress.com/wireless

PSoC® Solutions

[PSoC 1](#) | [PSoC 3](#) | [PSoC 4](#) | [PSoC 5LP](#)

Cypress Developer Community

[Forums](#) | [Projects](#) | [Video](#) | [Blogs](#) | [Training](#) | [Components](#)

Technical Support

cypress.com/support



© Cypress Semiconductor Corporation, 2001-2016. This document is the property of Cypress Semiconductor Corporation and its subsidiaries, including Spansion LLC ("Cypress"). This document, including any software or firmware included or referenced in this document ("Software"), is owned by Cypress under the intellectual property laws and treaties of the United States and other countries worldwide. Cypress reserves all rights under such laws and treaties and does not, except as specifically stated in this paragraph, grant any license under its patents, copyrights, trademarks, or other intellectual property rights. If the Software is not accompanied by a license agreement and you do not otherwise have a written agreement with Cypress governing the use of the Software, then Cypress hereby grants you a personal, non-exclusive, nontransferable license (without the right to sublicense) (1) under its copyright rights in the Software (a) for Software provided in source code form, to modify and reproduce the Software solely for use with Cypress hardware products, only internally within your organization, and (b) to distribute the Software in binary code form externally to end users (either directly or indirectly through resellers and distributors), solely for use on Cypress hardware product units, and (2) under those claims of Cypress's patents that are infringed by the Software (as provided by Cypress, unmodified) to make, use, distribute, and import the Software solely for use with Cypress hardware products. Any other use, reproduction, modification, translation, or compilation of the Software is prohibited.

TO THE EXTENT PERMITTED BY APPLICABLE LAW, CYPRESS MAKES NO WARRANTY OF ANY KIND, EXPRESS OR IMPLIED, WITH REGARD TO THIS DOCUMENT OR ANY SOFTWARE OR ACCOMPANYING HARDWARE, INCLUDING, BUT NOT LIMITED TO, THE IMPLIED WARRANTIES OF MERCHANTABILITY AND FITNESS FOR A PARTICULAR PURPOSE. To the extent permitted by applicable law, Cypress reserves the right to make changes to this document without further notice. Cypress does not assume any liability arising out of the application or use of any product or circuit described in this document. Any information provided in this document, including any sample design information or programming code, is provided only for reference purposes. It is the responsibility of the user of this document to properly design, program, and test the functionality and safety of any application made of this information and any resulting product. Cypress products are not designed, intended, or authorized for use as critical components in systems designed or intended for the operation of weapons, weapons systems, nuclear installations, life-support devices or systems, other medical devices or systems (including resuscitation equipment and surgical implants), pollution control or hazardous substances management, or other uses where the failure of the device or system could cause personal injury, death, or property damage ("Unintended Uses"). A critical component is any component of a device or system whose failure to perform can be reasonably expected to cause the failure of the device or system, or to affect its safety or effectiveness. Cypress is not liable, in whole or in part, and you shall and hereby do release Cypress from any claim, damage, or other liability arising from or related to all Unintended Uses of Cypress products. You shall indemnify and hold Cypress harmless from and against all claims, costs, damages, and other liabilities, including claims for personal injury or death, arising from or related to any Unintended Uses of Cypress products.

Cypress, the Cypress logo, Spansion, the Spansion logo, and combinations thereof, WICED, PSoC, CapSense, EZ-USB, F-RAM, and Traveo are trademarks or registered trademarks of Cypress in the United States and other countries. For a more complete list of Cypress trademarks, visit cypress.com. Other names and brands may be claimed as property of their respective owners.

Looking for pricing, stock, or lifecycle information?

Click below to explore more details on WIN SOURCE:

-  [View CY7C135-15JXC on WIN SOURCE](#)
-  [Cypress Semiconductor Corp Information](#)

Optimize Your Supply Chain with WIN SOURCE Solutions

-  Global Sourcing Solution
-  Obsolete Management
-  Cost Control Management
-  Shortage Management
-  Alternative Solution
-  Excess Inventory Management