



**THE DATASHEET OF
SFSA120GM3AA4TO-C-LB-626-STD**



swissbit®

Product Fact Sheet

Industrial M.2 SATA SSD

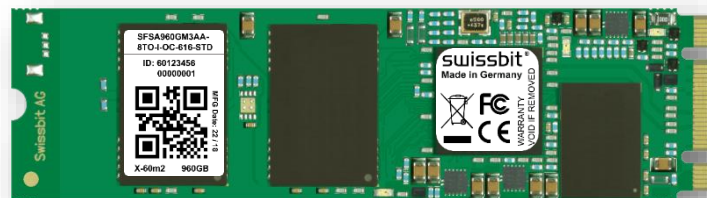
X-60m2 2280 Series SATA Gen3 – 6.0 Gbit/s, MLC

Commercial and Industrial
Temperature Grade

Date: August 02, 2019
Revision: 1.11

durabit™

“the better MLC”



Product Summary

- **Capacities:** 30 GBytes, 60 GBytes, 120 GBytes, 240 GBytes, 480 GBytes, 960 GBytes
- **Form Factor:** PCI Express™ M.2 (2280) (80 mm x 22 mm x 3.58 mm)
- **Compliance:** SATA Gen3 – 6 Gbit/s (Gen2 – 3 Gbit/s and Gen1 – 1.5 Gbit/s backward compatible)
- **Command Sets:** Supports ATA/ATAPI-8 and ACS-2
- **Performance:**
 - Read Performance: Sequential Read up to 520 MBytes/s, Random Read IOPS up to 75,000
 - Write Performance: Sequential Write up to 460 MBytes/s, Random Write IOPS up to 78,000
- **Operating Temperature Range*:**
 - Commercial: 0 °C to 70 °C
 - Industrial: -40 °C to 85 °C
- **Storage Temperature Range:** -40 °C to 85 °C
- **Operating Voltage:** 3.3 V ± 5%
- **Power (Max):** Read (Active): 1.5 W; Write (Active): 3.4 W; Idle: 410 mW; Slumber: 115 mW
- **Data Retention:** 10 Years @ Life Begin; 1 Year @ Life End
- **Endurance in TeraBytes Written (TBW) Max Capacity†:** Client > 2165; Embedded > 595; Enterprise > 555
- **Shock/Vibration:** 1,500 g / 50 g
- **Hardware BCH Code ECC:** up to 66 bit correction per 1 KByte page
- **NAND Flash Technology:** Multi-Level Cell (MLC)
- **Mean Time Between Failure:** > 2,000,000 hours
- **Data Reliability:** < 1 non-recoverable error per 10¹⁶ bits read

Product Features

- Best-in-Class Performance and Endurance with **durabit™** Technology
- Dynamic and Static Wear Leveling
- Subpage Mode Flash Translation Layer (FTL)
- Active and Passive Data Care Management
- Lifetime Enhancements
 - Dynamic Bad Block Remapping
 - Write Amplification Reduction
- On-Board Power Fail Protection
- AHCI, TRIM, and NCQ Support
- ATA Security Feature Set Support
- DEVSLP Compatible
- In-Field Firmware Update
- Enterprise-Grade Self-Monitoring, Analysis, and Reporting Technology (S.M.A.R.T.)
- 30 µinch Gold-Plated Connector (IPC-6012B Class 2 Compliant)
- AES256 Encryption (on request)
- Swissbit Life Time Monitoring (SBLTM) Tool and SDK for SBLTM (on request)

Why Swissbit?

Swissbit is focused on the design, development, manufacture, and support of leading edge memory and storage solutions for the worldwide OEM/ODM marketplace. As a global supplier, Swissbit recognizes and addresses the higher level of application requirements of today's industrial, Netcom, and automotive customers by providing best-in-class products and services, with uncompromised attention to driving overall value and quality.

* Adequate airflow is required to ensure the temperature, as reported in the S.M.A.R.T. data, does not exceed 115°C (industrial temperature drive) and 100°C (commercial temperature drive) respectively.

† According to JEDEC (JESD471), the time to write the full TBW is a minimum of 18 months. Higher average daily data volume reduces the specified TBW. The values listed are estimates and are subject to change without notice.

Looking for pricing, stock, or lifecycle information?

Click below to explore more details on WIN SOURCE:

- ⊖ [View SFSA120GM3AA4TO-C-LB-626-STD on WIN SOURCE](#)
- ⊖ [Swissbit NA Inc. Information](#)

Optimize Your Supply Chain with WIN SOURCE Solutions

- ✓ Global Sourcing Solution
- ✓ Obsolete Management
- ✓ Cost Control Management
- ✓ Shortage Management
- ✓ Alternative Solution
- ✓ Excess Inventory Management