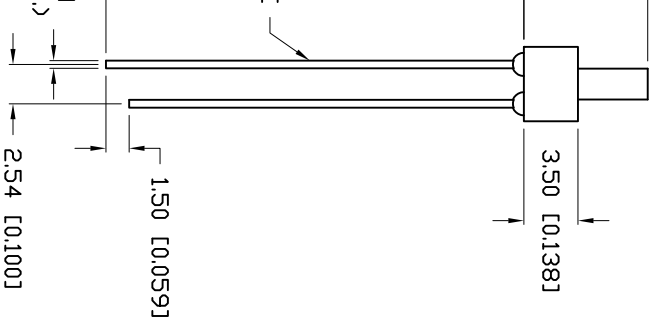
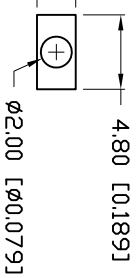




**THE DATASHEET OF  
SSL-LX20483GD-TD**



PART NUMBER	SSL-LX20483GD-TD		REV.	C
DATE	E.C.N. NUMBER AND REVISION COMMENTS		REV.	
01.11.95	UPDATED SPECS.		REV.	A
02.15.01	E.C.N. #10BRDR. & REDRAWN.		REV.	B
03.01.13	E.C.N. #10BRDR. & REDRAWN.		REV.	C



ELECTRO-OPTICAL CHARACTERISTICS TA=25°C If=20mA

PARAMETER	MIN	TYP	MAX	UNITS	TEST COND
PEAK WAVELENGTH		565		nm	
FORWARD VOLTAGE		2.2	2.6	V <sub>f</sub>	I <sub>f</sub> =100 $\mu$ A
REVERSE VOLTAGE	5.0			V <sub>r</sub>	I <sub>f</sub> =20mA
AXIAL INTENSITY		12		mcd	
VIEWING ANGLE		70		2x theta	
EMITTED COLOR:	GREEN				
EPOXY LENS FINISH:	GREEN TOP DIFFUSED				

LIMITS OF SAFE OPERATION AT 25°C

PARAMETER	MAX	UNITS
PEAK FORWARD CURRENT*	150	mA
STEADY CURRENT	25	mA
POWER DISSIPATION	105	mW
DERATE FROM 25°C	-1.6	mW/°C
OPERATING, STORAGE TEMP.	-40 TO +85	°C
SOLDERING TEMP.	+260	°C
2.0mm FROM BODY		3 SEC. MAX
* t<10 $\mu$ S		

DATE: 03.01.13  
 DRAWN BY: MA  
 SCALE: 1 OF 1  
 CHECK BY: KF  
 UNIT: mm [INCH]

T-2 565nm GREEN STOVEPIPE LED, GREEN TOP DIFFUSED LENS.  
 \*\*THE SPECIFICATIONS MAY CHANGE AT ANY TIME WITHOUT NOTICE DUE TO NEW MATERIALS OR PRODUCT IMPROVEMENT\*\*  
 UNCONTROLLED DOCUMENT  
 CONFIDENTIAL INFORMATION  
 THE INFORMATION CONTAINED IN THIS DOCUMENT IS THE PROPERTY OF LUXEY INC. EXCEPT AS SPECIFICALLY AUTHORIZED IN WRITING BY LUXEY INC., THE HOLDER OF THIS DOCUMENT SHALL KEEP ALL INFORMATION CONTAINED HEREIN CONFIDENTIAL AND SHALL PROTECT SAME IN WHOLE OR IN PART FROM DISCLOSURE AND DISSEMINATION TO ALL THIRD PARTIES.

UNCONTROLLED DOCUMENT  
 DATE: 03.01.13  
 DRAWN BY: MA  
 PAGE: 1 OF 1  
 CHECK BY: KF  
 SCALE: NTS  
 APPROV BY: KF  
 UNIT: mm [INCH]



## Looking for pricing, stock, or lifecycle information?

Click below to explore more details on WIN SOURCE:

- ⊖ [View SSL-LX20483GD-TD on WIN SOURCE](#)
- ⊖ [Lumex Opto/Components Inc. Information](#)

## Optimize Your Supply Chain with WIN SOURCE Solutions

- ✓ Global Sourcing Solution
- ✓ Obsolete Management
- ✓ Cost Control Management
- ✓ Shortage Management
- ✓ Alternative Solution
- ✓ Excess Inventory Management