



**THE DATASHEET OF
SML-LXT0805SISUGC**

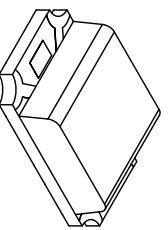
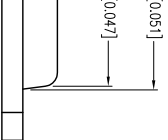
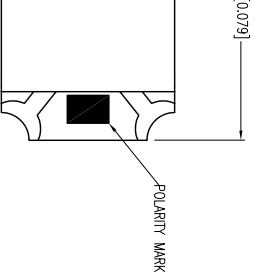


PART NUMBER

SML-LXT0805SISUGC

REV.

-

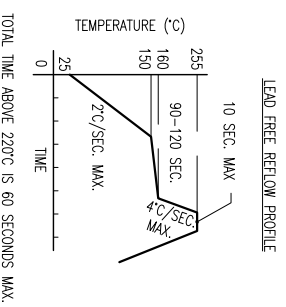
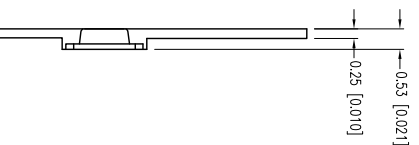
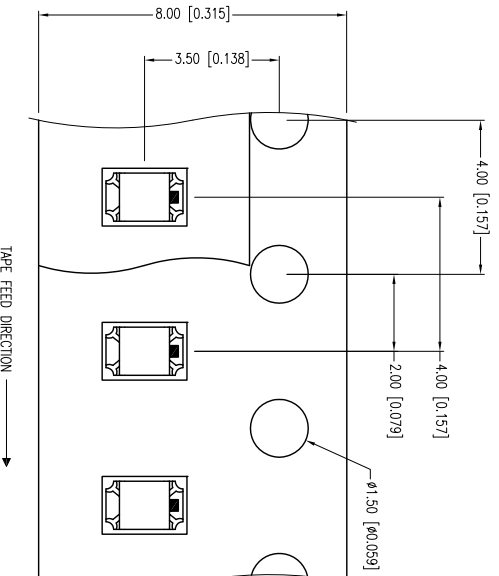
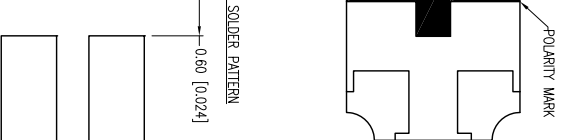


ELECTRO-OPTICAL CHARACTERISTICS $T_c=25^\circ\text{C}$			
PARAMETER	MIN	MAX	UNITS TEST COND
PEAK WAVELENGTH (R/G)	645/574		nm
FORWARD VOLTAGE (R/G)	1.95/2.1	2.5/2.5	Vf
REVERSE VOLTAGE	5.0		Vr
AXIAL INTENSITY		250/50	mcad
VIEWING ANGLE		120	2θ theta
EMITTED COLOR:	RED/GREEN		
LENS FINISH:	WATER CLEAR		

LIMITS OF SAFE OPERATION AT 25°C

PARAMETER	MAX	UNITS
PEAK FORWARD CURRENT* (R/G)	185/150	mA
STEADY CURRENT (R/G)	30/30	mA
POWER DISSIPATION (R/G)	75/75	mW
DERATE FROM 25°C	-1.2	mW/°C
OPERATING TEMP.	-40 TO +85	°C
STORAGE TEMP.	-40 TO +85	°C
	* <10μs	

CAUTION: MOISTURE SENSITIVE DEVICE
PER JEDEC LEVEL 3 STANDARDS



UNCONTROLLED DOCUMENT

DATE: 08.19.13 DRAWN BY: MA
 PAGE: 1 OF 1 CHKD BY: KF
 SCALE: NTS APRVD BY: KF
 UNIT: mm [INCH]

1.25mm x 2.00mm SMT LED, 645nm/574nm WATER CLEAR LENS.
 THE SPECIFICATIONS MAY CHANGE AT ANY TIME WITHOUT NOTICE DUE TO NEW MATERIALS OR PRODUCT IMPROVEMENT.
 CONFIDENTIAL INFORMATION
 THE INFORMATION CONTAINED IN THIS DOCUMENT IS THE PROPERTY OF LUXEY INC. EXCEPT AS SPECIFICALLY AUTHORIZED IN WRITING BY LUXEY INC., THE HOLDER OF THIS DOCUMENT SHALL
 KEEP ALL INFORMATION CONTAINED HEREIN CONFIDENTIAL AND SHALL PROTECT SAME IN WHOLE OR IN PART FROM DISCLOSURE AND DISSEMINATION TO ALL THIRD PARTIES.

Y AITE
 FAX: TEL 80188-4900
 800.278.5666
 3.15.2152
 LUXEY.COM
 /TW PHOTONICS GROUP



Looking for pricing, stock, or lifecycle information?

Click below to explore more details on WIN SOURCE:

- ⊖ [View SML-LXT0805SISUGC on WIN SOURCE](#)
- ⊖ [Lumex Opto/Components Inc. Information](#)

Optimize Your Supply Chain with WIN SOURCE Solutions

- ✓ Global Sourcing Solution
- ✓ Obsolete Management
- ✓ Cost Control Management
- ✓ Shortage Management
- ✓ Alternative Solution
- ✓ Excess Inventory Management