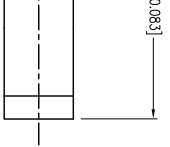


PART NUMBER

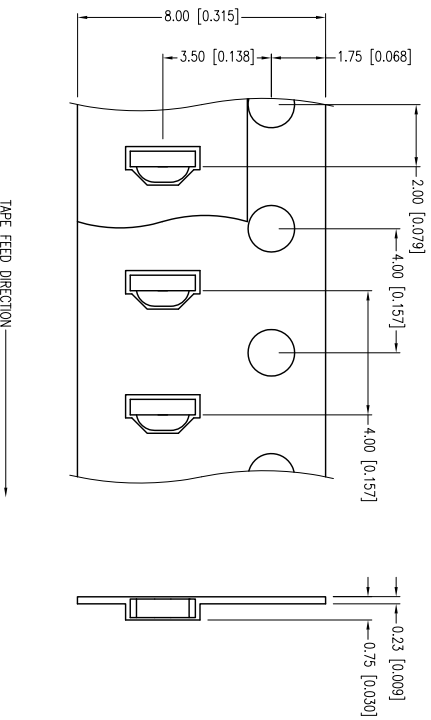
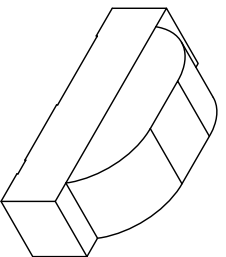
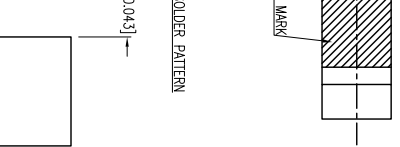
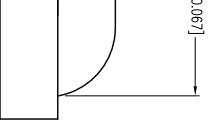
SML-LXR2106SIC-TR

REV.

-



1



TAPE FEED DIRECTION →

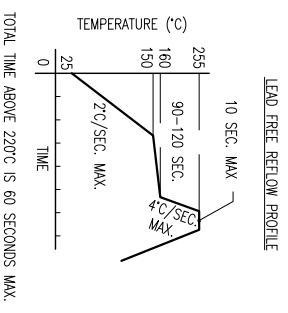
ELECTRO-OPTICAL CHARACTERISTICS $T_c=25^\circ\text{C}$					
PARAMETER	MIN	TYP	MAX	UNITS	TEST COND
PEAK WAVELENGTH		645		nm	
FORWARD VOLTAGE		1.95	2.5	V _f	$I_f=100\mu\text{A}$
REVERSE VOLTAGE	5.0			V _r	
AXIAL INTENSITY		220		mcd	$I_f=20\text{mA}$
VIEWING ANGLE		120		2 \times theta	
EMITTED COLOR:		RED			
LENS FINISH:		WATER CLEAR			

LIMITS OF SAFE OPERATION AT 25°C

PARAMETER	MAX	UNITS
PEAK FORWARD CURRENT*	185	mA
STEADY CURRENT	30	mA
POWER DISSIPATION	75	mW
DERATE FROM 25°C	-1.2	mW/°C
OPERATING TEMP.	-40 TO +85	°C
STORAGE TEMP.	-40 TO +85	°C

* I<I₀S

CAUTION: MOISTURE SENSITIVE DEVICE
PER JEDEC LEVEL 3 STANDARDS



TOTAL TIME ABOVE 220°C IS 60 SECONDS MAX.

DATE: 08.19.13
PAGE: 1 OF 1
SCALE: NTS
UNIT: mm [INCH]

Y A/E: (+0.039), X,X=+0.5 (+0.020), X,XX=+0.25 (+0.010), X,XXX=+0.127 (+0.005), LEAD SIZE=+0.05 (+0.002), LEAD LENGTH=+0.75 (+0.030), MIN.= -0.000, DECIMAL PRECISION MAX.= +0.000, DECIMAL PRECISION
 PART: L 60188-4900
 QTY: 8002783666
 DATE: 08.19.13
 SCALE: NTS
 UNIT: mm [INCH]

0.6mm x 2.1mm SMT LED RIGHT ANGLE, 645nm RED LED, WATER CLEAR LENS.
 THE SPECIFICATIONS MAY CHANGE AT ANY TIME WITHOUT NOTICE DUE TO NEW MATERIALS OR PRODUCT IMPROVEMENT

CONFIDENTIAL INFORMATION
 THE INFORMATION CONTAINED IN THIS DOCUMENT IS THE PROPERTY OF LUXEY INC. EXCEPT AS SPECIFICALLY AUTHORIZED IN WRITING BY LUXEY INC., THE HOLDER OF THIS DOCUMENT SHALL KEEP ALL INFORMATION CONTAINED HEREIN CONFIDENTIAL AND SHALL PROTECT SAME IN WHOLE OR IN PART FROM DISCLOSURE AND DISSEMINATION TO ALL THIRD PARTIES.

UNCONTROLLED DOCUMENT
 DATE: 08.19.13
 PAGE: 1 OF 1
 SCALE: NTS
 UNIT: mm [INCH]

Looking for pricing, stock, or lifecycle information?

Click below to explore more details on WIN SOURCE:

-  [View SML-LXR2106SIC-TR on WIN SOURCE](#)
-  [Lumex Opto/Components Inc. Information](#)

Optimize Your Supply Chain with WIN SOURCE Solutions

-  Global Sourcing Solution
-  Obsolete Management
-  Cost Control Management
-  Shortage Management
-  Alternative Solution
-  Excess Inventory Management