



**THE DATASHEET OF
SML-LXLC1206SIC-TR**

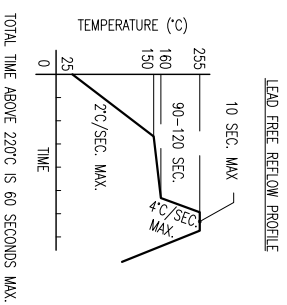
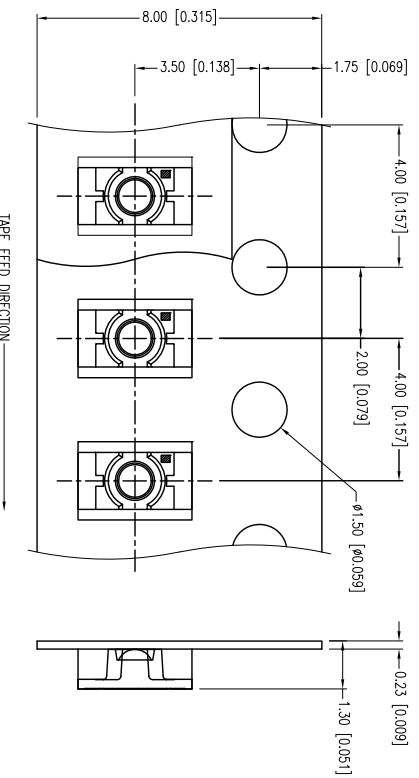
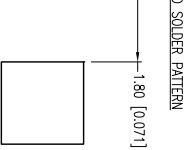
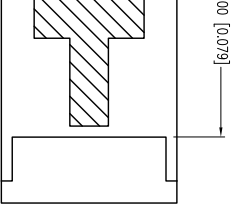
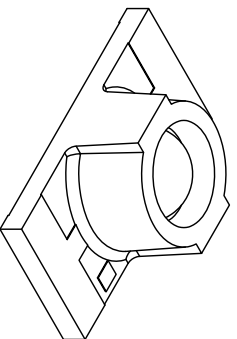
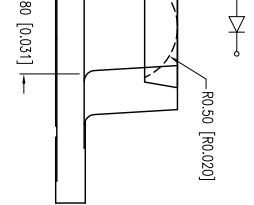
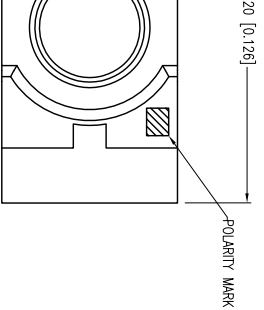


PART NUMBER

SML-LXLC1206SIC-TR

REV.

-



ELECTRO-OPTICAL CHARACTERISTICS I _a =25mA		I _a =20mA		UNITS		TEST COND
PARAMETER	MIN	TPP	MAX			
PEAK WAVELENGTH		645		mm		
FORWARD VOLTAGE		1.95	2.5	V _f		I _f =100μA
REVERSE VOLTAGE	5.0			V _r		I _f =20mA
AXIAL INTENSITY		550		mcd		
VIEWING ANGLE		70		2x theta		
EMITTED COLOR:	RED					
LENS FINISH:	WATER CLEAR					

LIMITS OF SAFE OPERATION AT 25°C

PARAMETER	MAX	UNITS
PEAK FORWARD CURRENT*	185	mA
STEADY CURRENT	30	mA
POWER DISSIPATION	75	mW
DERATE FROM 25°C	-1.2	mW/°C
OPERATING TEMP.	-40 TO +85	°C
STORAGE TEMP.	-40 TO +85	°C

* I<10μs

CAUTION: HUMIDITY SENSITIVE DEVICE
PER JEDEC LEVEL 3 STANDARDS



Looking for pricing, stock, or lifecycle information?

Click below to explore more details on WIN SOURCE:

- ⊖ [View SML-LXLC1206SIC-TR on WIN SOURCE](#)
- ⊖ [Lumex Opto/Components Inc. Information](#)

Optimize Your Supply Chain with WIN SOURCE Solutions

- ✓ Global Sourcing Solution
- ✓ Obsolete Management
- ✓ Cost Control Management
- ✓ Shortage Management
- ✓ Alternative Solution
- ✓ Excess Inventory Management