



**THE DATASHEET OF
SML-LXFP0603SYC-TR**



PART NUMBER

SML-LXFP0603SYC-TR

REV. ---

| ELECTRO-OPTICAL CHARACTERISTICS $T_a=25^{\circ}\text{C}$ | | | | | |
|--|-------------|-----|-----|----------------|-------------------|
| PARAMETER | MIN | TYP | MAX | UNITS | TEST COND |
| PEAK WAVELENGTH | | 590 | | nm | |
| FORWARD VOLTAGE | 1.7 | 2.0 | 2.2 | V _f | $I_f=10\text{mA}$ |
| REVERSE VOLTAGE | 5.0 | | | V _r | |
| AXIAL INTENSITY | 20 | | 45 | md | $I_f=5\text{mA}$ |
| VIEWING ANGLE | | 130 | | 2x theta | |
| EMITTED COLOR: | YELLOW | | | | |
| LENS FINISH: | WATER CLEAR | | | | |

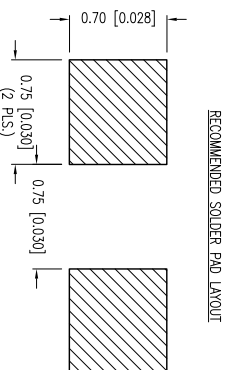
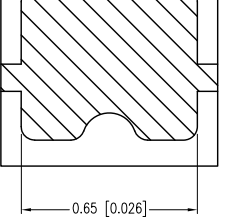
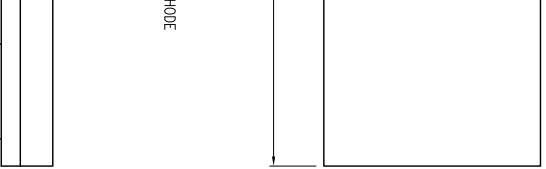
LIMITS OF SAFE OPERATION AT 25°C

| PARAMETER | MAX | UNITS |
|-----------------------|------------|-------|
| PEAK FORWARD CURRENT* | 60 | mA |
| STEADY CURRENT | 25 | mA |
| POWER DISSIPATION | 60 | mW |
| DERATE FROM 25°C | -1.2 | mW/°C |
| OPERATING TEMP. | -40 TO +85 | °C |
| STORAGE TEMP. | -40 TO +90 | °C |

* I<I₀5

CAUTION: STATIC SENSITIVE DEVICE
FOLLOW PROPER E.S.D. HANDLING PROCEDURES
WHEN WORKING WITH THIS PART.

CAUTION: MOISTURE SENSITIVE DEVICE
PER JEDEC LEVEL 2 STANDARDS



RECOMMENDED SOLDER PAD LAYOUT

HELEN ROAD
LIL, 60067-6976
+1.847.359.2790
WWW.LUXEY.COM
LUXEY PHOTONICS GROUP

X±1 (+0.039), X.X=±0.5 (+0.020), X.XX=±0.25 (+0.010), X.XXX=±0.127 (+0.005), LEAD SIZE=±0.05 (+0.002), LEAD LENGTH=±0.75 (+0.030), MIN.= -0.000, DECIMAL PRECISION MAX.= +0.000, DECIMAL PRECISION

1.6x0.8x0.2mm ULTRA THIN SMT LED, YELLOW, WATER CLEAR LENS.

THE SPECIFICATIONS MAY CHANGE AT ANY TIME WITHOUT NOTICE DUE TO NEW MATERIALS OR PRODUCT IMPROVEMENT.

CONFIDENTIAL INFORMATION

THE INFORMATION CONTAINED IN THIS DOCUMENT IS THE PROPERTY OF LUXEY INC. EXCEPT AS SPECIFICALLY AUTHORIZED IN WRITING BY LUXEY INC., THE HOLDER OF THIS DOCUMENT SHALL KEEP ALL INFORMATION CONTAINED HEREIN CONFIDENTIAL AND SHALL PROTECT SAME IN WHOLE OR IN PART FROM DISCLOSURE AND DISSEMINATION TO ALL THIRD PARTIES.

UNCONTROLLED DOCUMENT

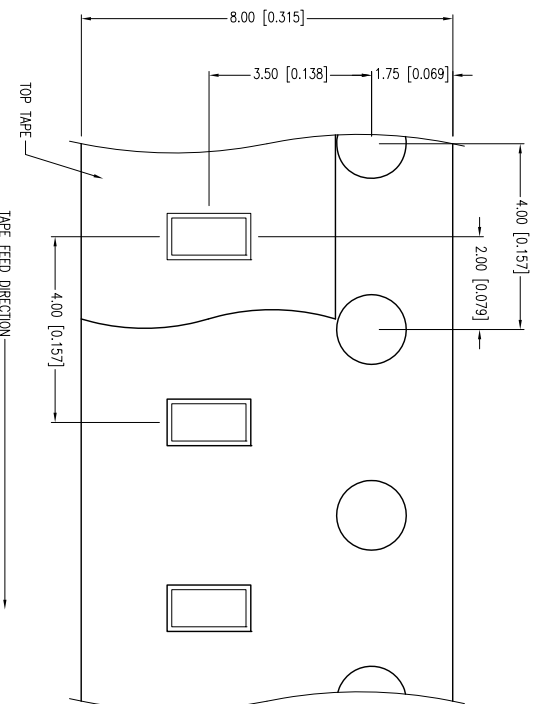
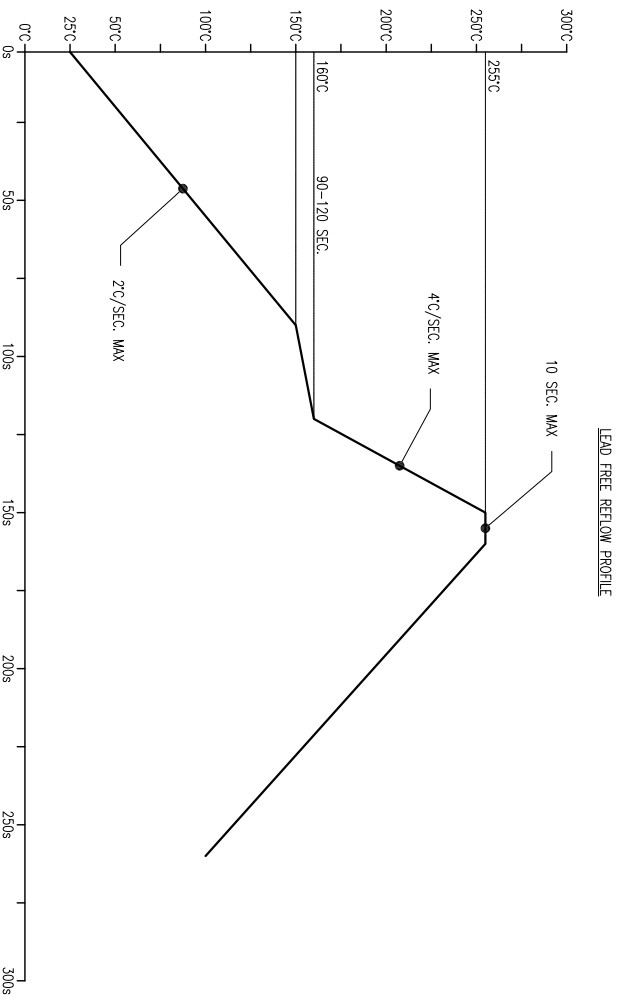
| | | | |
|--------|-----------|-----------|----|
| DATE: | 12.06.12 | DRAWN BY: | MA |
| PAGE: | 1 OF 2 | CHKD BY: | DT |
| SCALE: | NTS | APRVD BY: | DT |
| UNIT: | mm [INCH] | | |

PART NUMBER

SML-LXFP0603SYC-TR

REV.

--



HELEN ROAD
LIL 60067-6976
+1 847 359 2790
WWW.LUXEY.COM
FIM PHOTONICS GROUP

±0.1 (+0.039), X.X=±0.5 (+0.020), X.XX=±0.25 (+0.010), X.XXX=±0.127 (+0.005), LEAD SIZE=±0.05 (+0.002), LEAD LENGTH=±0.75 (+0.030), MIN= -0.00 DECMAL PRECISION MAX.= +0.00 DECMAL PRECISION

1.6x0.8x0.2mm ULTRA THIN SMT LED, YELLOW, WATER CLEAR LENS.

THE SPECIFICATIONS MAY CHANGE AT ANY TIME WITHOUT NOTICE DUE TO NEW MATERIALS OR PRODUCT IMPROVEMENT

CONFIDENTIAL INFORMATION
THE INFORMATION CONTAINED IN THIS DOCUMENT IS THE PROPERTY OF LUXEY INC. EXCEPT AS SPECIFICALLY AUTHORIZED IN WRITING BY LUXEY INC., THE HOLDER OF THIS DOCUMENT SHALL KEEP ALL INFORMATION CONTAINED HEREIN CONFIDENTIAL AND SHALL PROTECT SAME IN WHOLE OR IN PART FROM DISCLOSURE AND DISSEMINATION TO ALL THIRD PARTIES.

UNCONTROLLED DOCUMENT

| | | | |
|--------|-----------|-----------|----|
| DATE: | 12.06.12 | DRAWN BY: | MA |
| PAGE: | 2 OF 2 | CHKD BY: | DT |
| SCALE: | NTS | APRVD BY: | DT |
| UNIT: | mm [INCH] | | |

Looking for pricing, stock, or lifecycle information?

Click below to explore more details on WIN SOURCE:

- ⊖ [View SML-LXFP0603SYC-TR on WIN SOURCE](#)
- ⊖ [Lumex Opto/Components Inc. Information](#)

Optimize Your Supply Chain with WIN SOURCE Solutions

- ✓ Global Sourcing Solution
- ✓ Obsolete Management
- ✓ Cost Control Management
- ✓ Shortage Management
- ✓ Alternative Solution
- ✓ Excess Inventory Management