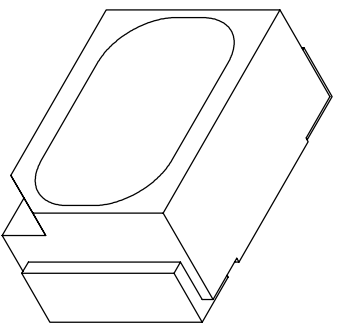




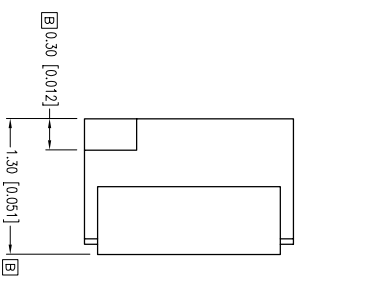
**THE DATASHEET OF
SML-LX23SBC-TR**



PART NUMBER	SML-LX23SBC-TR	REV.	C
DATE	E.C.N. NUMBER AND REVISION COMMENTS	REV.	
08.21.08	E.C.N. #11148.	A	
12.14.09	E.C.N. #10603.	B	
03.28.11	E.C.N. #10BRDR & REDRAWN.	C	



ELECTRO-OPTICAL CHARACTERISTICS $I_A=25\text{mA}$					
PARAMETER	MIN	TYP	MAX	UNITS	TEST COND
PEAK WAVELENGTH		430	4.5	nm	
FORWARD VOLTAGE		3.8		V_f	$I_f=100\mu\text{A}$
REVERSE VOLTAGE	5.0			V_r	
AXIAL INTENSITY		15		med	$I_f=20\text{mA}$
VIEWING ANGLE		90		2θ theo	
EMITTED COLOR:		BLUE			
EPOXY LENS FINISH:		WATER CLEAR LENS			

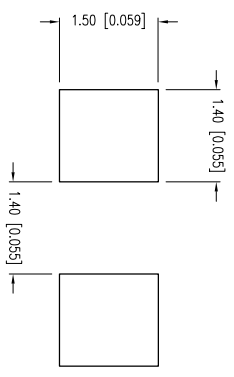


LIMITS OF SAFE OPERATION AT 25°C PER CHIP		
PARAMETER	MAX	UNITS
PEAK FORWARD CURRENT*	150	mA
STEADY CURRENT	30	mA
POWER DISSIPATION	100	mW
DERATE FROM 25°C	-1.2	mW/°C
OPERATING TEMP.	-40 TO +85	°C
STORAGE TEMP.	-40 TO +85	°C
SOLDERING TEMP.	+240	°C
* I<10μS		

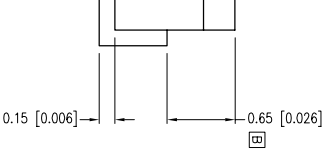
NOTES:
1. THE CATHODE IS ORIENTED TOWARDS THE TAPE SPROCKET HOLE.

CAUTION: MOISTURE SENSITIVE DEVICE
PER JEDEC LEVEL 4 STANDARDS

CAUTION: STATIC SENSITIVE DEVICE
FOLLOW PROPER E.S.D. HANDLING PROCEDURES
WHEN WORKING WITH THIS PART.



RECOMMENDED SOLDER PAD LAYOUT



HELEN ROAD
E. I. 60067-6976
+1.847.359.2790
WWW.LUMEX.COM

UNCONTROLLED DOCUMENT

DATE: 03.28.11 DRAWN BY: AB
PAGE: 1 OF 2 CHKD BY: JD
SCALE: NTS APRVD BY: JD
UNIT: mm [INCH]

©

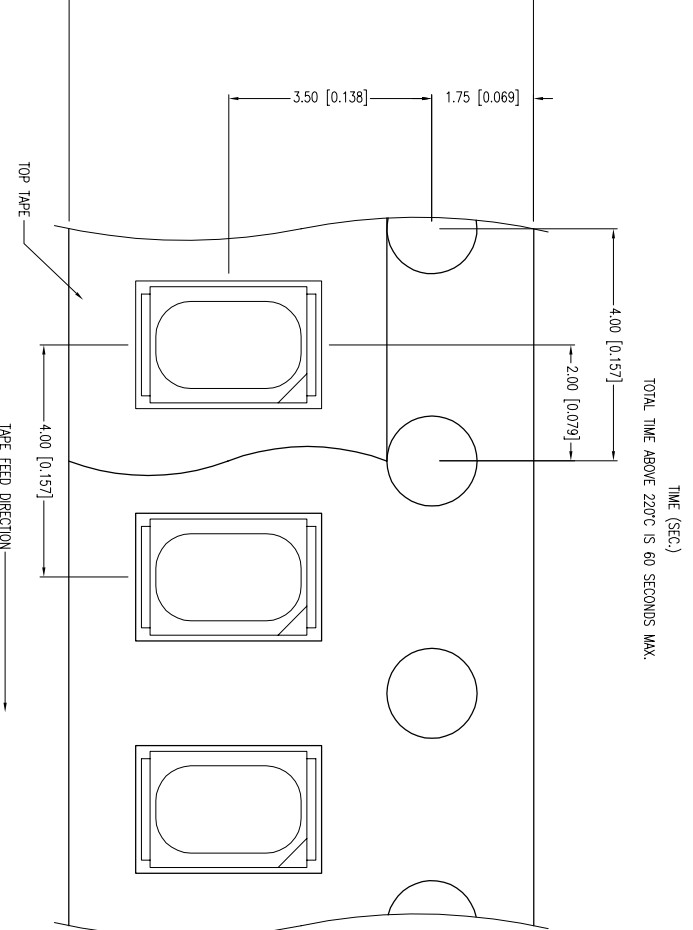
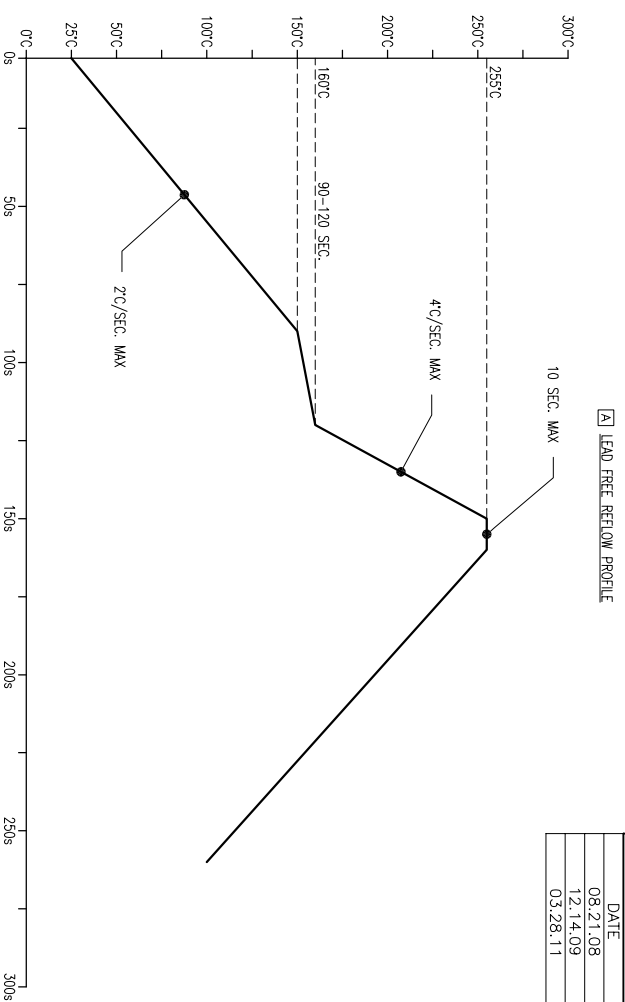
X±1 (+0.039), X±±0.5 (+0.020), XXX=±0.25 (+0.010), XXXX=±0.127 (+0.005), LEAD SIZE=±0.05 (+0.002), LEAD LENGTH=±0.75 (+0.030), MIN= -0.00 DECMAL PRECISION MAX. = +0.00 DECMAL PRECISION

2mm x 3mm SURFACE MOUNT WITH REFLECTOR, 430nm BLUE LED, WATER CLEAR LENS.

THE SPECIFICATIONS MAY CHANGE AT ANY TIME WITHOUT NOTICE DUE TO NEW MATERIALS OR PRODUCT IMPROVEMENT

CONFIDENTIAL INFORMATION
THE INFORMATION CONTAINED IN THIS DOCUMENT IS THE PROPERTY OF LUMEX INC. EXCEPT AS SPECIFICALLY AUTHORIZED IN WRITING BY LUMEX INC., THE HOLDER OF THIS DOCUMENT SHALL KEEP ALL INFORMATION CONTAINED HEREIN CONFIDENTIAL AND SHALL PROTECT SAME IN WHOLE OR IN PART FROM DISCLOSURE AND DISSEMINATION TO ALL THIRD PARTIES.

PART NUMBER		SML-LX23SBC-TR		REV.	C
DATE		E.C.N. NUMBER AND REVISION COMMENTS		REV.	
08.21.08	E.C.N. #11148			A	
12.14.09	E.C.N. #10603			B	
03.28.11	E.C.N. #10BRDR & REDRAWN.			C	



HELEN ROAD
E. I. L 60067-6976
+1.847.359.2790
WWW.LUMEX.COM

±0.025 (+0.009), X±0.05 (+0.020), XXX=±0.25 (+0.010), XXXX=±0.127 (+0.005), LEAD SIZE=±0.05 (+0.002), LEAD LENGTH=±0.75 (+0.030), MIN.=^{+0.000}-_{0.000} DECIMAL PRECISION MAX.=^{+0.000}-_{0.000} DECIMAL PRECISION
2mm x 3mm SURFACE MOUNT WITH REFLECTOR, 430nm BLUE LED, WATER CLEAR LENS.
THE SPECIFICATIONS MAY CHANGE AT ANY TIME WITHOUT NOTICE DUE TO NEW MATERIALS OR PRODUCT IMPROVEMENT
CONFIDENTIAL INFORMATION
THE INFORMATION CONTAINED IN THIS DOCUMENT IS THE PROPERTY OF LUMEX INC. EXCEPT AS SPECIFICALLY AUTHORIZED IN WRITING BY LUMEX INC., THE HOLDER OF THIS DOCUMENT SHALL KEEP ALL INFORMATION CONTAINED HEREIN CONFIDENTIAL AND SHALL PROTECT SAME IN WHOLE OR IN PART FROM DISCLOSURE AND DISSEMINATION TO ALL THIRD PARTIES.

UNCONTROLLED DOCUMENT

DATE:	03.28.11	DRAWN BY:	AB
PAGE:	2 OF 2	CHKD BY:	JD
SCALE:	NTS	APRVD BY:	JD
UNIT:	mm [INCH]		

Looking for pricing, stock, or lifecycle information?

Click below to explore more details on WIN SOURCE:

- ⊖ [View SML-LX23SBC-TR on WIN SOURCE](#)
- ⊖ [Lumex Opto/Components Inc. Information](#)

Optimize Your Supply Chain with WIN SOURCE Solutions

- ✓ Global Sourcing Solution
- ✓ Obsolete Management
- ✓ Cost Control Management
- ✓ Shortage Management
- ✓ Alternative Solution
- ✓ Excess Inventory Management