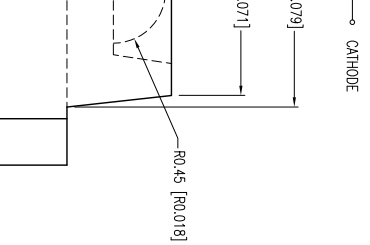
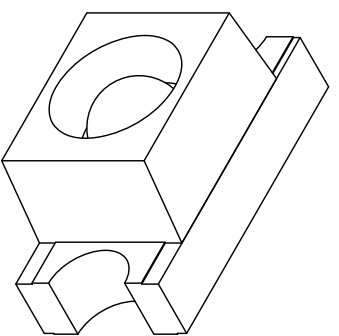
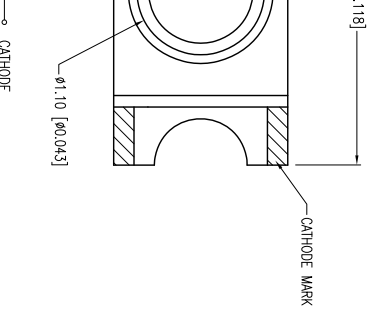




**THE DATASHEET OF  
SML-LXL1206USBC-TR**



PART NUMBER	SML-LXL1206USBC-TR	REV.	F
DATE	E.C.N. NUMBER AND REVISION COMMENTS	REV.	REV.
03.14.03	E.C.N. #10967.	A	
03.17.05	E.C.N. #11148.	B	
05.26.10	E.C.N. #11508.	C	
10.12.10	E.C.N. #11665.	D	
11.22.10	E.C.N. #11680.	E	
12.27.12	E.C.N. #11847.	F	



**D** **E** ELECTRO-OPTICAL CHARACTERISTICS  $I_A=25^\circ\text{C}$

PARAMETER	MIN	TYP	MAX	UNITS	TEST COND
PEAK WAVELENGTH	470		4.3	nm	
FORWARD VOLTAGE	5.0			V <sub>f</sub>	$I_f=100\mu\text{A}$
REVERSE VOLTAGE			285	mA	$I_f=20\text{mA}$
AXIAL INTENSITY	90			med	
VIEWING ANGLE		60		2x theta	
EMITTED COLOR:	BLUE				
EPOXY LENS FINISH:	WATER CLEAR LENS				

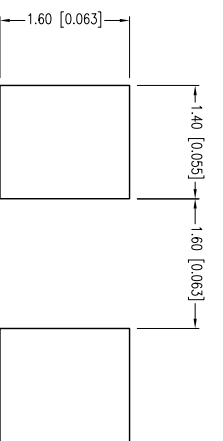
**E** **E** LIMITS OF SAFE OPERATION AT 25°C

PARAMETER	MAX	UNITS
PEAK FORWARD CURRENT*	100	mA
STEADY CURRENT	25	mA
POWER DISSIPATION	110	mW
DERATE FROM 25°C	-1.2	mW/°C
OPERATING TEMP.	-40 TO +85	°C
STORAGE TEMP.	-40 TO +85	°C

\*  $t < 10\mu\text{S}$

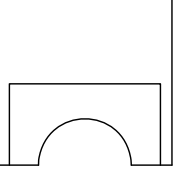
**C** **A** CAUTION: MOISTURE SENSITIVE DEVICE PER JEDEC LEVEL 2 STANDARDS

RECOMMENDED SOLDER PAD LAYOUT



- NOTES:
1. THE CATHODE IS ORIENTED TOWARDS THE TAPE SPROCKET HOLE.

CAUTION: STATIC SENSITIVE DEVICE FOLLOW PROPER E.S.D. HANDLING PROCEDURES WHEN WORKING WITH THIS PART.



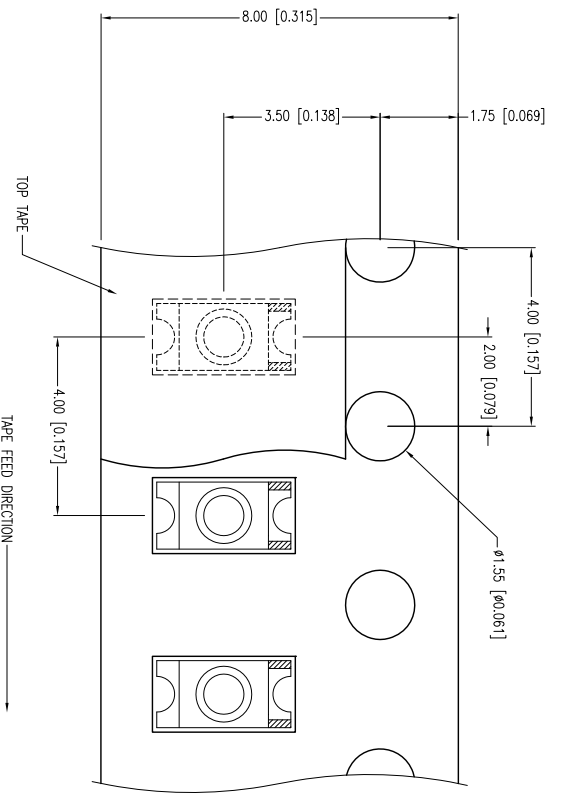
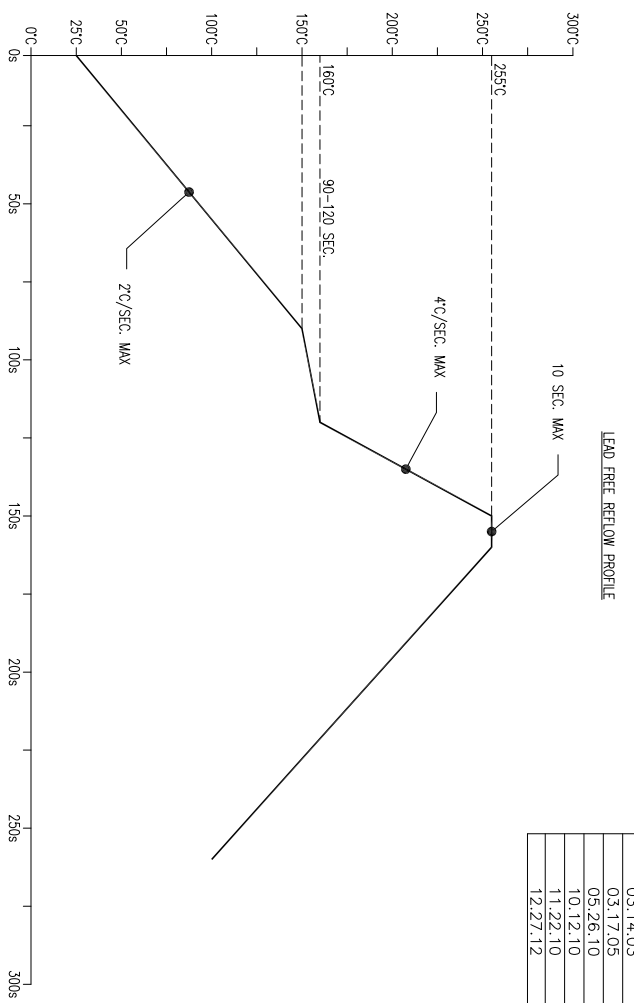
X±1 (+0.039), X-X±0.5 (+0.020), X-XX±0.25 (+0.010), X-XXX±0.127 (+0.005), LEAD SIZE±0.05 (+0.002), LEAD LENGTH±0.75 (+0.030), MIN±0.001, DECIMAL PRECISION  
 HELEN ROAD  
 E. I. L 60067-6976  
 +1.847.359.2790  
 WWW.LUMEX.COM

3.0mm x 1.6mm PCB SURFACE MOUNT WITH LENS; 470nm ULTRA SUPER BLUE LED, WATER CLEAR, TAPE & REEL.  
 \*\*THE SPECIFICATIONS MAY CHANGE AT ANY TIME WITHOUT NOTICE DUE TO NEW MATERIALS OR PRODUCT IMPROVEMENT\*\*  
 CONFIDENTIAL INFORMATION  
 THE INFORMATION CONTAINED IN THIS DOCUMENT IS THE PROPERTY OF LUMEX INC. EXCEPT AS SPECIFICALLY AUTHORIZED IN WRITING BY LUMEX INC., THE HOLDER OF THIS DOCUMENT SHALL KEEP ALL INFORMATION CONTAINED HEREIN CONFIDENTIAL AND SHALL PROTECT SAME IN WHOLE OR IN PART FROM DISCLOSURE AND DISSEMINATION TO ALL THIRD PARTIES.

UNCONTROLLED DOCUMENT  
 DATE: 01.08.01 DRAWN BY: CT  
 PAGE: 1 OF 2 CHKD BY: KF  
 SCALE: NTS  
 UNIT: mm [INCH] APRVD BY: SA



PART NUMBER		SML-LXL1206USBC-TR		REV.	F
E.C.N. NUMBER AND REVISION COMMENTS					
DATE	03.14.03	E.C.N. #10967.			A
	03.17.05	E.C.N. #11148.			B
	05.26.10	E.C.N. #11508.			C
	10.12.10	E.C.N. #11665.			D
	11.22.10	E.C.N. #11680.			E
	12.27.12	E.C.N. #11847.			F



X±1 (+0.039), X.X=±0.5 (+0.020), X.XX=±0.25 (+0.010), XXX=±0.127 (+0.005), LEAD SIZE=±0.05 (+0.002), LEAD LENGTH=±0.75 (+0.030), MIN= -0.00  
 HELEN ROAD  
 E. I. L 60067-6976  
 +1.847.359.2790  
 WWW.LUXEM.COM

3.0mm x 1.6mm PCB SURFACE MOUNT WITH LENS, 470nm ULTRA SUPER BLUE LED, WATER CLEAR, TAPE & REEL.  
 \*\*THE SPECIFICATIONS MAY CHANGE AT ANY TIME WITHOUT NOTICE DUE TO NEW MATERIALS OR PRODUCT IMPROVEMENT\*\*  
 CONFIDENTIAL INFORMATION  
 THE INFORMATION CONTAINED IN THIS DOCUMENT IS THE PROPERTY OF LUXEM INC. EXCEPT AS SPECIFICALLY AUTHORIZED IN WRITING BY LUXEM INC., THE HOLDER OF THIS DOCUMENT SHALL KEEP ALL INFORMATION CONTAINED HEREIN CONFIDENTIAL AND SHALL PROTECT SAME IN WHOLE OR IN PART FROM DISCLOSURE AND DISSEMINATION TO ALL THIRD PARTIES.

UNCONTROLLED DOCUMENT

DATE:	01.08.01	DRAWN BY:	CT
PAGE:	2 OF 2	CHKD BY:	KF
SCALE:	NTS	APRVD BY:	SA
UNIT:	mm [INCH]		



## Looking for pricing, stock, or lifecycle information?

Click below to explore more details on WIN SOURCE:

- ⊖ [View SML-LXL1206USBC-TR on WIN SOURCE](#)
- ⊖ [Lumex Opto/Components Inc. Information](#)

## Optimize Your Supply Chain with WIN SOURCE Solutions

- ✓ Global Sourcing Solution
- ✓ Obsolete Management
- ✓ Cost Control Management
- ✓ Shortage Management
- ✓ Alternative Solution
- ✓ Excess Inventory Management