



**THE DATASHEET OF  
SML-LX5026UWC-WB6**

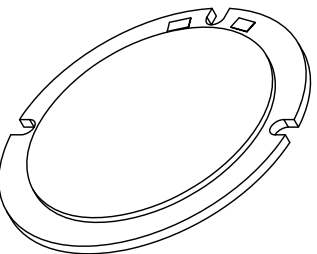
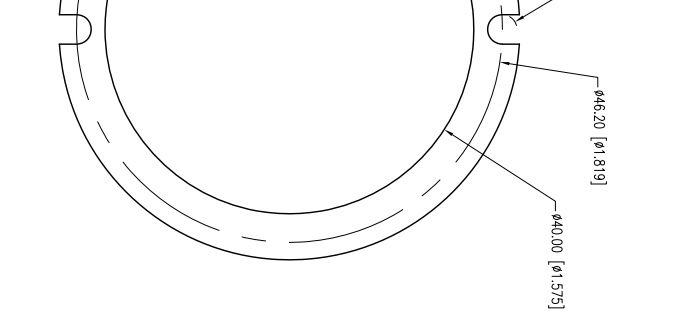


PART NUMBER

SML-LX5026UWC-WB6

REV.

-



ELECTRO-OPTICAL CHARACTERISTICS $T_j=25^{\circ}\text{C}$ $I_f=660\text{mA}$					
PARAMETER	MIN	TP	MAX	UNITS	TEST COND
PEAK WAVELENGTH		-	9.4	nm	
FORWARD VOLTAGE			10.2	Vf	$I_f=100\mu\text{A}$
REVERSE VOLTAGE	5.0			Vr	$I_r=660\text{mA}$
AXIAL INTENSITY			560	lm	
COLOR TEMP.			6500	K	
VIEWING ANGLE			170	$2\theta$ theta	
COLOR RENDERING INDEX			70		
EMITTED COLOR			COOL WHITE		
LENS FINISH:			WATER CLEAR		

## LIMITS OF SAFE OPERATION AT 25°C

PARAMETER	MAX	UNITS
PEAK FORWARD CURRENT*	1000	mA
STEADY CURRENT	700	mA
LED JUNCTION TEMPERATURE	130	mW
DERATE FROM 25°C	-1.2	mW/°C
OPERATING TEMP.	-20 TO +70	°C
STORAGE TEMP.	-20 TO +70	°C

\* I&lt;10A5



X±1 (+0.039), X.X=±0.5 (+0.020), X.XX=±0.25 (+0.010), X.XXX=±0.127 (+0.005), LEAD SIZE=±0.05 (+0.002), LEAD LENGTH=±0.75 (+0.030), MIN.= -0.00 -DECIMAL PRECISION MAX.= +0.00 -DECIMAL PRECISION  
 Y AFE  
 CAN, IL 60188-4900  
 800.278.5666  
 3.151.2152  
 LUXEY.COM  
 /TW PHOTONICS GROUP

3W, WIRELESS BOND LED MODULE, METAL PCB, COOL WHITE.

\*\*THE SPECIFICATIONS MAY CHANGE AT ANY TIME WITHOUT NOTICE DUE TO NEW MATERIALS OR PRODUCT IMPROVEMENT\*\*

CONFIDENTIAL INFORMATION  
 THE INFORMATION CONTAINED IN THIS DOCUMENT IS THE PROPERTY OF LUXEY INC. EXCEPT AS SPECIFICALLY AUTHORIZED IN WRITING BY LUXEY INC., THE HOLDER OF THIS DOCUMENT SHALL  
 KEEP ALL INFORMATION CONTAINED HEREIN CONFIDENTIAL AND SHALL PROTECT SAME IN WHOLE OR IN PART FROM DISCLOSURE AND DISSEMINATION TO ALL THIRD PARTIES.

UNCONTROLLED DOCUMENT

DATE:	12.07.12	DRAWN BY:	MA
PAGE:	1 OF 1	CHKD BY:	JD
SCALE:	NTS	APRVD BY:	JD
UNIT:	mm [INCH]		



## Looking for pricing, stock, or lifecycle information?

Click below to explore more details on WIN SOURCE:

-  [View SML-LX5026UWC-WB6 on WIN SOURCE](#)
-  [Lumex Opto/Components Inc. Information](#)

## Optimize Your Supply Chain with WIN SOURCE Solutions

-  Global Sourcing Solution
-  Obsolete Management
-  Cost Control Management
-  Shortage Management
-  Alternative Solution
-  Excess Inventory Management