

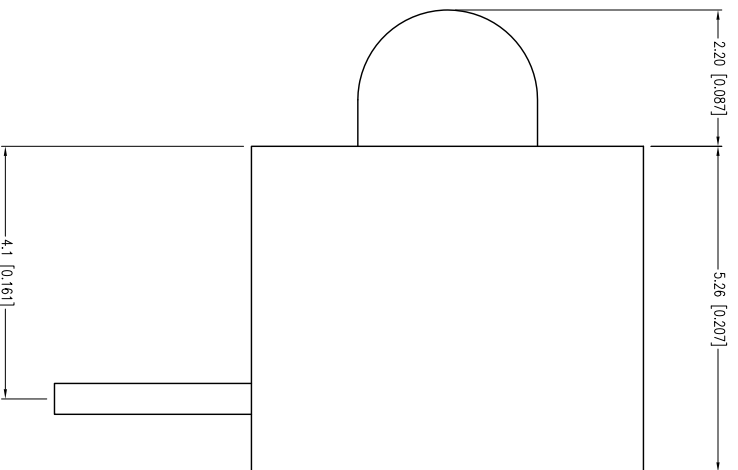


**THE DATASHEET OF
SSF-LXH303LID**



PART NUMBER	SF- LXH303L1D		REV.	F
DATE	E.C.N. NUMBER AND REVISION COMMENTS			REV.
12.06.93	REDRAWN.			A
12.16.93	REMOVED MAX FROM DIMS.			B
10.12.94	UPDATED SAFE OPER. SPECS.			C
09.02.98	E.C.N. #10BRDR. & REDRAWN.			D
10.30.00	E.C.N. #10675.			E
04.20.12	E.C.N. #10BRDR. & REDRAWN/#11816.			F

42.90 [0.114]



[0.020] SQR.
(2 PLS.)

ELECTRO-OPTICAL CHARACTERISTICS $T_a=25^{\circ}\text{C}$ $I_f=20\text{mA}$

PARAMETER	MIN	TYP	MAX	UNITS	TEST COND
PEAK WAVELENGTH		635		nm	
FORWARD VOLTAGE		2.0	2.5	Vf	$I_f=100\mu\text{A}$
REVERSE VOLTAGE	5.0			Vr	$I_f=20\text{mA}$
AXIAL INTENSITY		30		md	$I_f=2\text{mA}$
VIEWING ANGLE	1.0		60	2θ theta	
EMITTED COLOR:	RED				
LENS FINISH:	RED DIFFUSED				

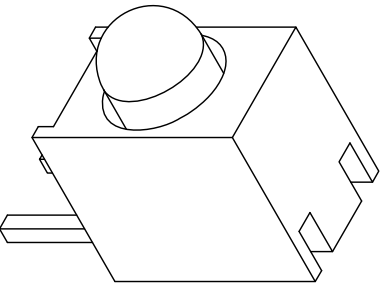
LIMITS OF SAFE OPERATION AT 25°C

PARAMETER	MAX	UNITS
PEAK FORWARD CURRENT*	150	mA
STEADY CURRENT	30	mA
POWER DISSIPATION	105	mW
DERATE FROM 25°C	-1.6	mW/°C
OPERATING TEMP.	-40 TO +85	°C
STORAGE TEMP.	-40 TO +85	°C
SOLDERING TEMP.	+260	°C
2.0mm FROM BODY	3	SEC.

* $t < 10\text{MS}$

[E] [E] NOTES:

- SSL-LX304L1D, LOW CURRENT RED LED.
- SSL-LXH303, BLACK NICKEL HOLDER, UL 94V-0.



Y AFE
CAN. TL 60188-4900
800.278.3666
3.15.2152
LUXEY.COM
LUXEY.COM
/TW PHOTONICS GROUP

T-3mm (T-1) LED FAULT INDICATOR, 635nm RED LED, RED DIFFUSED LENS, LOW CURRENT.

THE SPECIFICATIONS MAY CHANGE AT ANY TIME WITHOUT NOTICE DUE TO NEW MATERIALS OR PRODUCT IMPROVEMENT.

CONFIDENTIAL INFORMATION
THE INFORMATION CONTAINED IN THIS DOCUMENT IS THE PROPERTY OF LUXEY INC. EXCEPT AS SPECIFICALLY AUTHORIZED IN WRITING BY LUXEY INC., THE HOLDER OF THIS DOCUMENT SHALL KEEP ALL INFORMATION CONTAINED HEREIN CONFIDENTIAL AND SHALL PROTECT SAME IN WHOLE OR IN PART FROM DISCLOSURE AND DISSEMINATION TO ALL THIRD PARTIES.

UNCONTROLLED DOCUMENT

DATE:	04.20.12	DRAWN BY:	AB
PAGE:	1 OF 1	CHKD BY:	KF
SCALE:	NTS	APRVD BY:	KF
UNIT:	mm [INCH]		



Looking for pricing, stock, or lifecycle information?

Click below to explore more details on WIN SOURCE:

-  [View SSF-LXH303LID on WIN SOURCE](#)
-  [Lumex Opto/Components Inc. Information](#)

Optimize Your Supply Chain with WIN SOURCE Solutions

-  Global Sourcing Solution
-  Obsolete Management
-  Cost Control Management
-  Shortage Management
-  Alternative Solution
-  Excess Inventory Management