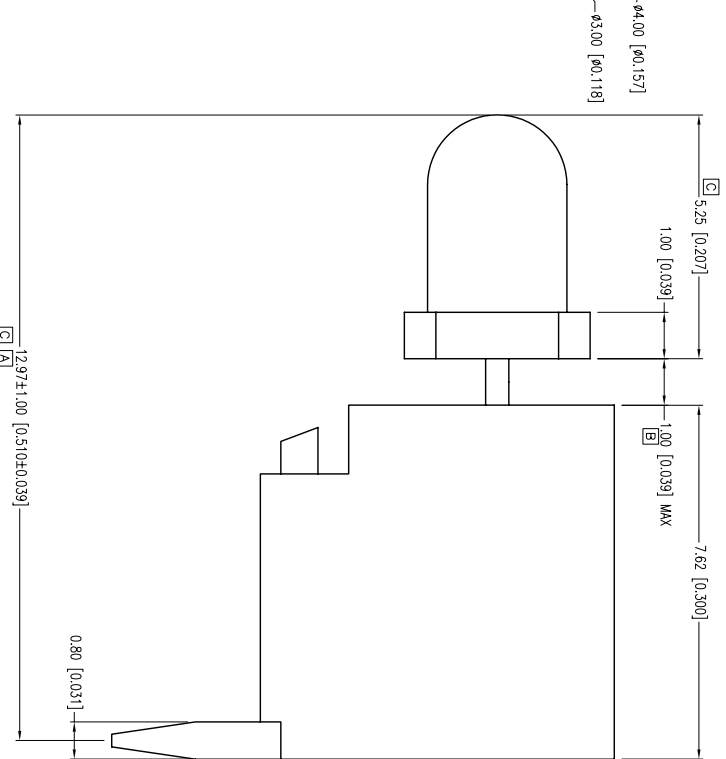




**THE DATASHEET OF  
SSF-LXH4RASRD**



PART NUMBER	SSF-LX44RASRD	REV.	C
DATE	E.C.N. NUMBER AND REVISION COMMENTS	REV.	
07.05.95	CHANGED DIM. WHERE NOTED.	A	
12.12.00	E.C.N. #10692.	B	
10.18.11	E.C.N. #11763/10BRDR. & REDRAWN.	C	



□ ELECTRO-OPTICAL CHARACTERISTICS  $T_a=25^{\circ}\text{C}$   $I_f=20\text{mA}$

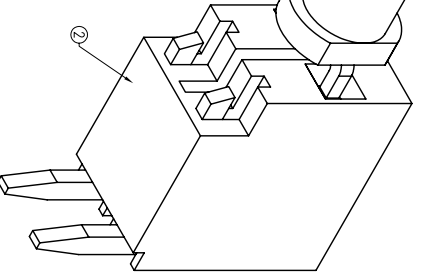
PARAMETER	MIN	TYP	MAX	UNITS	TEST COND
PEAK WAVELENGTH		660		nm	
FORWARD VOLTAGE		1.85	2.5	V <sub>f</sub>	$I_f=10\text{mA}$
REVERSE VOLTAGE			5.0	V <sub>r</sub>	
AXIAL INTENSITY		120	320	med	$I_f=20\text{mA}$
VIEWING ANGLE		60		2x theta	
EMITTED COLOR:		RED			
EPOXY LENS FINISH:		RED DIFFUSED			

□ LIMITS OF SAFE OPERATION AT 25°C

PARAMETER	MAX	UNITS
PEAK FORWARD CURRENT*	155	mA
STEADY CURRENT	30	mA
POWER DISSIPATION	75	mW
DERATE FROM 25°C	-1.6	mW/°C
OPERATING TEMP.:	-40 TO +85	°C
STORAGE TEMP.:	-40 TO +85	°C
SOLDERING TEMP.:	+260	°C
2.0mm FROM BODY	3	SEC.
* $t < 10\mu\text{S}$		

NOTES:

1. SSL-LX3054SRD LED.
2. SSH-LX44RA LAMP SOCKET.
3. CUT LED LEADS 5mm LONG.
4. ASSEMBLE IN SOCKET, POLARITY AS SHOWN.



HELEN ROAD  
 E. IL 60067-6976  
 +1.847.359.2790  
 WWW.LUXEY.COM

T-1 LAMP, 660nm SUPER RED FAULT INDICATOR.

CONFIDENTIAL INFORMATION  
 \*\*THE SPECIFICATIONS MAY CHANGE AT ANY TIME WITHOUT NOTICE DUE TO NEW MATERIALS OR PRODUCT IMPROVEMENT.\*\*

UNCONTROLLED DOCUMENT



DATE: 10.18.11 DRAWN BY: AB  
 PAGE: 1 OF 1 CHKD BY: KF  
 SCALE: NTS APRVD BY: SS  
 UNIT: mm [INCH]

THE INFORMATION CONTAINED IN THIS DOCUMENT IS THE PROPERTY OF LUXEY INC. EXCEPT AS SPECIFICALLY AUTHORIZED IN WRITING BY LUXEY INC., THE HOLDER OF THIS DOCUMENT SHALL KEEP ALL INFORMATION CONTAINED HEREIN CONFIDENTIAL AND SHALL PROTECT SAME IN WHOLE OR IN PART FROM DISCLOSURE AND DISSEMINATION TO ALL THIRD PARTIES.



## Looking for pricing, stock, or lifecycle information?

Click below to explore more details on WIN SOURCE:

-  [View SSF-LXH4RASRD on WIN SOURCE](#)
-  [Lumex Opto/Components Inc. Information](#)

## Optimize Your Supply Chain with WIN SOURCE Solutions

-  Global Sourcing Solution
-  Obsolete Management
-  Cost Control Management
-  Shortage Management
-  Alternative Solution
-  Excess Inventory Management