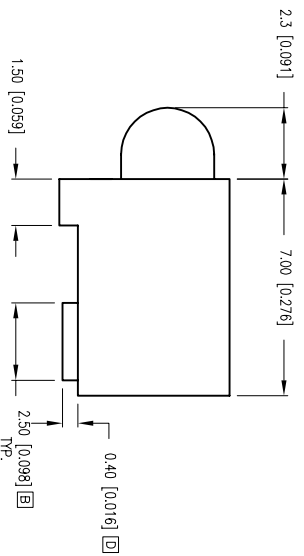




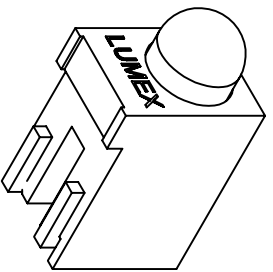
**THE DATASHEET OF
SSF-LXH305USBD-TR**



PART NUMBER	SSF-LXH305USB(-TR)	REV.	E
DATE	E.C.N. NUMBER AND REVISION COMMENTS	REV.	
11.06.01	E.C.N. #10782.	A	
04.22.02	E.C.N. #10855	B	
05.15.02	E.C.N. #10864.	C	
02.20.06	E.C.N. #11311.	D	
04.18.11	E.C.N. #10BRDR. & REDRAWN.	E	



PATENT PENDING



ELECTRO-OPTICAL CHARACTERISTICS TA = 25°C I_F = 20mA

PARAMETER	MIN	TYP.	MAX	UNITS	TEST COND
PEAK WAVELENGTH		470		nm	
FORWARD VOLTAGE		3.5	4.0	V _F	I _F = 100µA
REVERSE VOLTAGE		5.0		V _R	
AXIAL INTENSITY		80		med	I _F = 20mA
VIEWING ANGLE		60		2x theta	
EMITTED COLOR:		BLUE			
EPOXY LENS FINISH:		BLUE DIFFUSED			

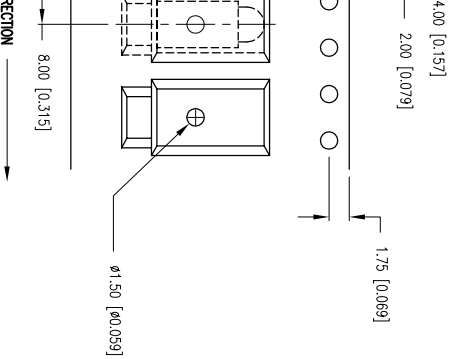
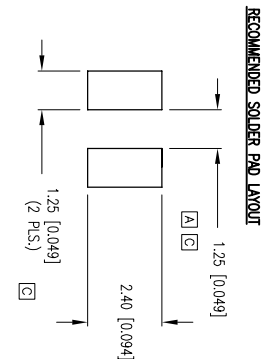
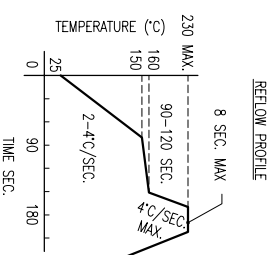
LIMITS OF SAFE OPERATION AT 25°C

PARAMETER	MAX	UNITS
PEAK FORWARD CURRENT*	100	mA
STEADY CURRENT	30	mA
POWER DISSIPATION	98	mW
DERATE FROM 25°C	-1.6	mW/°C
OPERATING TEMP.	-40 TO +85	°C
STORAGE TEMP.	-40 TO +85	°C
SOLDERING TEMP.	+260	°C
2.0mm FROM BODY	3	SEC. MAX.
* I_T10/5		

NOTES:

1. SS1-LX305F81S80, BLUE LED.
2. SS1-LXH305, BLACK HOLDER.
3. -TR SUFFIX TO DESIGNATE TAPE AND REEL SUPPLIED.
4. CARRIER TAPE #XP-CARRIER24-56

CAUTION: STATIC SENSITIVE DEVICE
FOLLOW PROPER E.S.D. HANDLING PROCEDURES
WHEN WORKING WITH THIS PART.



HELEEN ROAD
E. I. L 60067-6976
+1.847.359.2790
WWW.LUXEY.COM

T-3mm (T-1) RIGHT ANGLE SURFACE MOUNT LED, 470nm ULTRA BLUE LED, BLUE DIFFUSED LENS, TAPE & REEL.
THE SPECIFICATIONS MAY CHANGE AT ANY TIME WITHOUT NOTICE DUE TO NEW MATERIALS OR PRODUCT IMPROVEMENT
CONFIDENTIAL INFORMATION
THE INFORMATION CONTAINED IN THIS DOCUMENT IS THE PROPERTY OF LUXEY INC. EXCEPT AS SPECIFICALLY AUTHORIZED IN WRITING BY LUXEY INC., THE HOLDER OF THIS DOCUMENT SHALL KEEP ALL INFORMATION CONTAINED HEREIN CONFIDENTIAL AND SHALL PROTECT SAME IN WHOLE OR IN PART FROM DISCLOSURE AND DISSEMINATION TO ALL THIRD PARTIES.

UNCONTROLLED DOCUMENT
DATE: 04.18.11 DRAWN BY: AB
PAGE: 1 OF 1 CHKD BY: JD
SCALE: NTS APRVD BY: JD
UNIT: mm [INCH]

Looking for pricing, stock, or lifecycle information?

Click below to explore more details on WIN SOURCE:

- ⊖ [View SSF-LXH305USBD-TR on WIN SOURCE](#)
- ⊖ [Lumex Opto/Components Inc. Information](#)

Optimize Your Supply Chain with WIN SOURCE Solutions

- ✓ Global Sourcing Solution
- ✓ Obsolete Management
- ✓ Cost Control Management
- ✓ Shortage Management
- ✓ Alternative Solution
- ✓ Excess Inventory Management