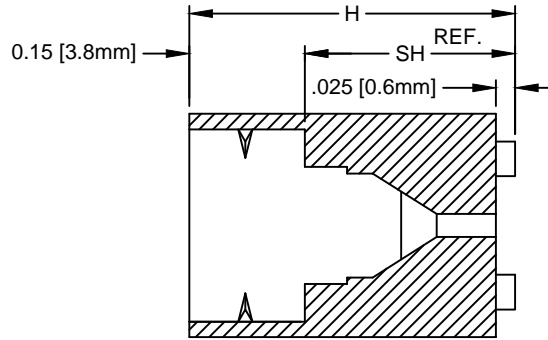
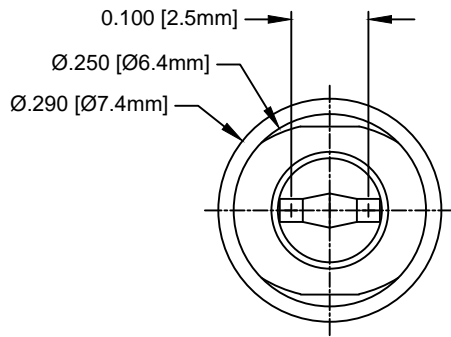




THE DATASHEET OF SLM-610



| REV. | DESCRIPTION | DATE | APPROVED |
|------|--|----------|----------|
| B | Engineering Update w/o Changes | 03/01/04 | M. C. |
| C | Removed Optional Locator Pin, Generated SLM-XXX-LP | 11/11/04 | M. C. |
| D | Tolerance adjustment @ "SH" | 12/06/04 | M. C. |
| E | Removed Material Code | 05/21/16 | J. C. |
| F | ECO-1088 Removed SLM-140 | 04/16/21 | A. V. |




| PART NO. | SH (Ref.) | H |
|----------|--------------|---------------|
| SLM-150 | .150 (3.8mm) | .295 (7.2mm) |
| SLM-160 | .160 (4.1mm) | .305 (7.7mm) |
| SLM-170 | .170 (4.3mm) | .315 (8.0mm) |
| SLM-180 | .180 (4.6mm) | .325 (8.3mm) |
| SLM-190 | .190 (4.8mm) | .335 (8.5mm) |
| SLM-200 | .200 (5.1mm) | .345 (8.8mm) |
| SLM-210 | .210 (5.3mm) | .355 (9.0mm) |
| SLM-220 | .220 (5.6mm) | .365 (9.3mm) |
| SLM-230 | .230 (5.8mm) | .375 (9.5mm) |
| SLM-240 | .240 (6.1mm) | .385 (9.8mm) |
| SLM-250 | .250 (6.4mm) | .395 (10.0mm) |
| SLM-260 | .260 (6.6mm) | .405 (10.3mm) |
| SLM-270 | .270 (6.9mm) | .415 (10.5mm) |
| SLM-280 | .280 (7.1mm) | .425 (10.8mm) |

| PART NO. | SH (Ref.) | H |
|----------|---------------|---------------|
| SLM-290 | .290 (7.4mm) | .435 (11.0mm) |
| SLM-300 | .300 (7.6mm) | .445 (11.3mm) |
| SLM-310 | .310 (7.9mm) | .455 (11.6mm) |
| SLM-320 | .320 (8.1mm) | .465 (11.8mm) |
| SLM-330 | .330 (8.4mm) | .475 (12.1mm) |
| SLM-340 | .340 (8.6mm) | .485 (12.3mm) |
| SLM-350 | .350 (8.9mm) | .495 (12.6mm) |
| SLM-360 | .360 (9.1mm) | .505 (12.8mm) |
| SLM-370 | .370 (9.4mm) | .515 (13.1mm) |
| SLM-380 | .380 (9.7mm) | .525 (13.3mm) |
| SLM-390 | .390 (9.9mm) | .535 (13.6mm) |
| SLM-400 | .400 (10.2mm) | .545 (13.8mm) |
| SLM-410 | .410 (10.4mm) | .555 (14.1mm) |
| SLM-420 | .420 (10.7mm) | .565 (14.3mm) |

| PART NO. | SH (Ref.) | H |
|----------|---------------|---------------|
| SLM-430 | .430 (10.9mm) | .575 (14.6mm) |
| SLM-440 | .440 (11.2mm) | .585 (14.9mm) |
| SLM-450 | .450 (11.4mm) | .595 (15.1mm) |
| SLM-470 | .470 (11.9mm) | .615 (15.6mm) |
| SLM-490 | .490 (12.4mm) | .635 (16.1mm) |
| SLM-510 | .510 (13.0mm) | .655 (16.6mm) |
| SLM-530 | .530 (13.5mm) | .675 (17.1mm) |
| SLM-550 | .550 (13.8mm) | .695 (17.5mm) |
| SLM-570 | .570 (14.5mm) | .715 (18.2mm) |
| SLM-590 | .590 (15.0mm) | .735 (18.6mm) |
| SLM-610 | .610 (15.5mm) | .755 (19.2mm) |
| SLM-630 | .630 (16.0mm) | .775 (19.7mm) |
| SLM-650 | .650 (16.5mm) | .795 (20.2mm) |

| PART NO. | SH (Ref.) | H |
|----------|---------------|----------------|
| SLM-670 | .670 (17.0mm) | .815 (20.7mm) |
| SLM-690 | .690 (17.5mm) | .835 (21.2mm) |
| SLM-710 | .710 (18.0mm) | .855 (21.7mm) |
| SLM-730 | .730 (18.5mm) | .875 (22.2mm) |
| SLM-750 | .750 (19.1mm) | .895 (22.7mm) |
| SLM-770 | .770 (19.6mm) | .915 (23.2mm) |
| SLM-790 | .790 (20.1mm) | .935 (23.7mm) |
| SLM-810 | .810 (20.6mm) | .955 (24.3mm) |
| SLM-830 | .830 (21.1mm) | .975 (24.8mm) |
| SLM-850 | .850 (21.6mm) | .995 (25.3mm) |
| SLM-870 | .870 (22.1mm) | 1.015 (25.8mm) |
| SLM-890 | .890 (22.6mm) | 1.035 (26.3mm) |

CUSTOMER USE DRAWING


| | | | | | |
|--|---------|--|--------------------------|-------------------------------|----------------------------|
| STANDARD TOLERANCE (UNLESS OTHERWISE SPECIFIED) | |  BIVAR [®] 4 THOMAS, IRVINE, CA. 92618 TEL: (949) 951-8808 FAX: (949) 951-3974 | | | |
| DECIMALS | ANGULAR | | | | |
| .X ± .1 | X° ± 1° | TITLE: MOLDED, SELF-RETAINING LED MOUNT | | | |
| .XX ± .01 | | | | | |
| .XXX ± .005 | | DESIGNED: M. Chen | DATE: 04/23/03 | DRAWING NO: SLM-XXX | REVISION: F |
| | | REVISED: V. Chavez | DATE: 04/16/21 | SHEET SIZE A | CAGE CODE: 32559 |
| | | CHECKED: A. Valdez | DATE: 04/16/21 | SCALE: N/A | SHEET # 1 OF 1 |
| CAD GENERATED DOCUMENT, DO NOT MEASURE DRAWING | | | | | |

2. MATERIAL: NYLON 6/6, 94V-0, BLACK.

1. GENERAL SPECIFICATIONS: BIVAR MOLDED COMPONENT SPECIFICATION BV00-E101.

Looking for pricing, stock, or lifecycle information?

Click below to explore more details on WIN SOURCE:

 [View SLM-610 on WIN SOURCE](#)

 [Bivar Inc. Information](#)

Optimize Your Supply Chain with WIN SOURCE Solutions

-  Global Sourcing Solution
-  Obsolete Management
-  Cost Control Management
-  Shortage Management
-  Alternative Solution
-  Excess Inventory Management