



# THE DATASHEET OF SMFLP15.0



**NOTES:**

1. ALLOWABLE FLEXIBLE LIGHT PIPE CUT LENGTH AVAILABLE IN INCREMENTS OF 0.05".
2. MINIMUM BEND RADIUS OF FLEXIBLE LIGHT PIPE: 0.87" [22mm].
3. COMPONENTS SHIPPED NON-ASSEMBLED.
4. MINIMUM 0.210" FIBER INSERTION INTO SMFLP.

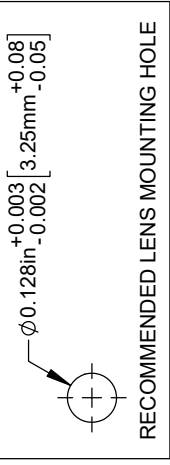
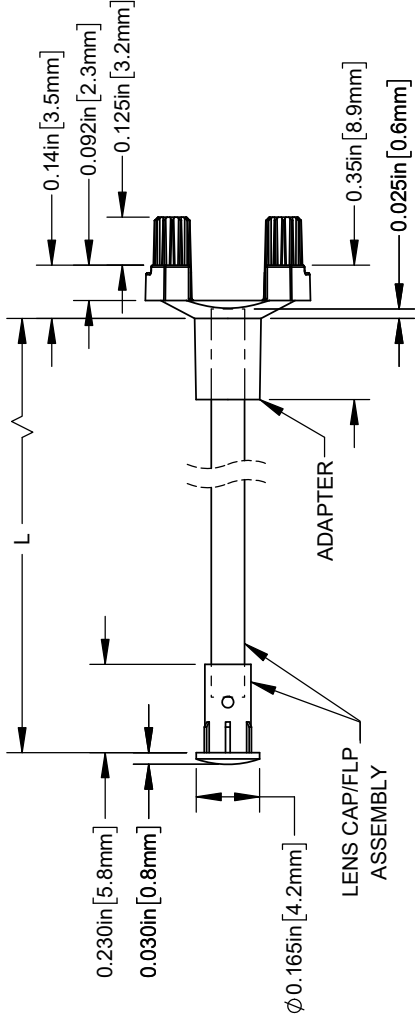
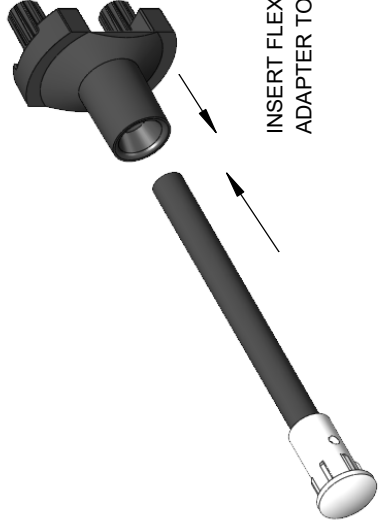
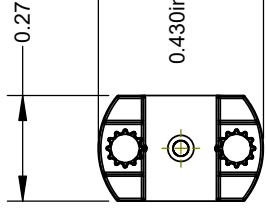


TABLE 1 - LENGTH	
LENGTH (L)*	TOLERANCE
1.00" - 16.00"	±0.05"
16.1" - 40.00"	±0.15"
40.1" - 80.00"	±0.30"
80.1" - 3,940.00"	±0.5%

\*AVAILABLE IN 0.1" INCREMENTS



REV.	DESCR
D	Added Shipping Note
E	Updated FLPC Hidden View
F	Updated Fiber To FLPS In
G	Updated Notes
H	ECO-1241: Updated Record



0.15  
 2X  $\varnothing 0.100in_{-0.005}^{+0.000}$  [2.0]  
 LED MOUNTING  
 RECOMMENDED  
 & MOUNTING

**CUSTOMER**

STANDARD TOLERANCE (UNLESS OTHERWISE SPECIFIED)		ANGULAR
DECIMALS	X° ± 1°	
.X	±.1	
.XX	±.02	
.XXX	±.010	
DESIGNED:	D. GREEN	DATE: 4/17/2006
REVISED:	K. BARON	DATE: 4/15/2022
CHECKED:	A. VALDEZ	DATE: 4/15/2022

## Looking for pricing, stock, or lifecycle information?

Click below to explore more details on WIN SOURCE:

 [View SMFLP15.0 on WIN SOURCE](#)

 [Bivar Inc. Information](#)

## Optimize Your Supply Chain with WIN SOURCE Solutions

-  Global Sourcing Solution
-  Obsolete Management
-  Cost Control Management
-  Shortage Management
-  Alternative Solution
-  Excess Inventory Management