

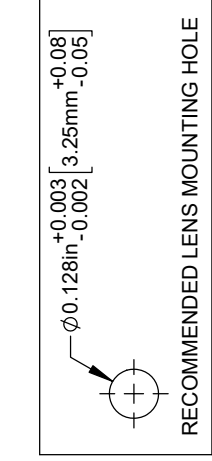
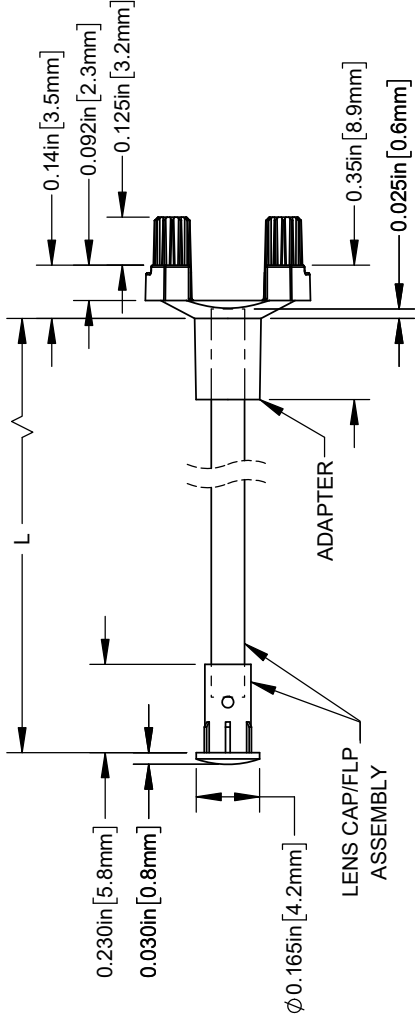


THE DATASHEET OF SMFLP3.0



NOTES:

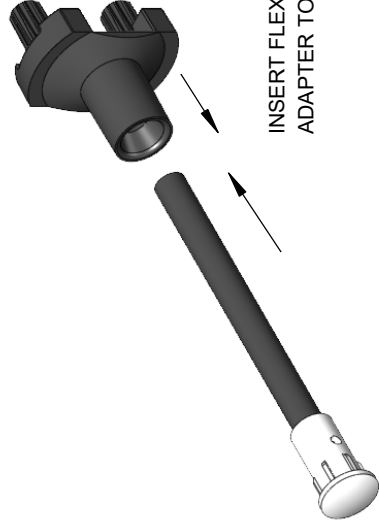
1. ALLOWABLE FLEXIBLE LIGHT PIPE CUT LENGTH AVAILABLE IN INCREMENTS OF 0.05".
2. MINIMUM BEND RADIUS OF FLEXIBLE LIGHT PIPE: 0.87" [22mm].
3. COMPONENTS SHIPPED NON-ASSEMBLED.
4. MINIMUM 0.210" FIBER INSERTION INTO SMFLP.



RECOMMENDED LENS MOUNTING HOLE

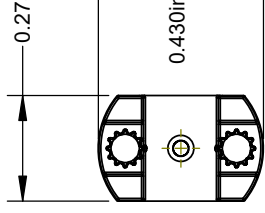
TABLE 1 - LENGTH	
LENGTH (L)*	TOLERANCE
1.00" - 16.00"	± 0.05 "
16.1" - 40.00"	± 0.15 "
40.1" - 80.00"	± 0.30 "
80.1" - 3,940.00"	$\pm 0.5\%$

*AVAILABLE IN 0.1" INCREMENTS



INSERT FLEXIBLE LIGHT PIPE INTO ADAPTER TO COMPLETE ASSEMBLY

REV.	DESCR
D	Added Shipping Note
E	Updated FLPC Hidden View
F	Updated Fiber To FLPS In
G	Updated Notes
H	ECO-1241: Updated Record



0.15
 $2X \phi 0.100\text{in} \begin{matrix} +0.000 \\ -0.005 \end{matrix}$ [2.54mm]
 LED MOUNTING
 RECOMMENDED
 & MOUNTING

CUSTOMER

STANDARD TOLERANCE (UNLESS OTHERWISE SPECIFIED)	
DECIMALS	ANGULAR
X $\pm .1$	$X^\circ \pm 1^\circ$
.XX $\pm .02$	
.XXX $\pm .010$	

DESIGNED:	D. GREEN	DATE:	4/17/2006
REVISED:	K. BARON	DATE:	4/15/2022
CHECKED:	A. VALDEZ	DATE:	4/15/2022

Looking for pricing, stock, or lifecycle information?

Click below to explore more details on WIN SOURCE:

 [View SMFLP3.0 on WIN SOURCE](#)

 [Bivar Inc. Information](#)

Optimize Your Supply Chain with WIN SOURCE Solutions

-  Global Sourcing Solution
-  Obsolete Management
-  Cost Control Management
-  Shortage Management
-  Alternative Solution
-  Excess Inventory Management