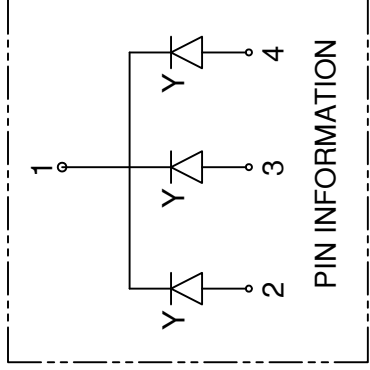
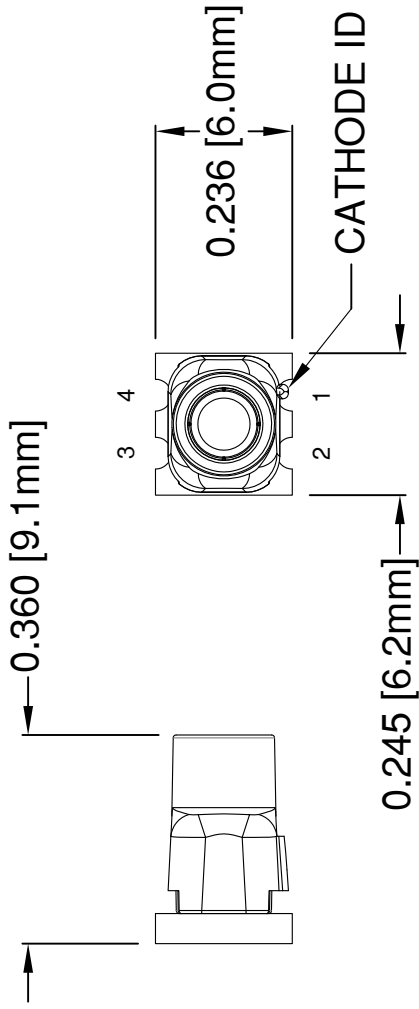




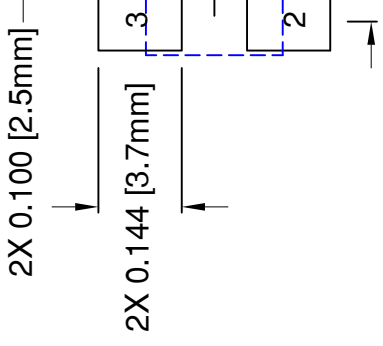
**THE DATASHEET OF  
SMTV01-Y19**



REV.	
B	Engineering Release
C	Revised Side View, S
D	Corrected Typo in Re



### RECOMMENDED S



ABSOLUTE MAXIMUM RATINGS at Ta=25°C	
REVERSE VOLTAGE	5V
REVERSE CURRENT	100µA
OPERATING TEMPERATURE RANGE	-35°C - 85°C
STORAGE TEMPERATURE	-35°C - 85°C
MAX SOLDERING TEMPERATURE	260°C FOR 3 SECONDS


STANDARD TOLERANCES (UNLESS OTHERWISE SPECIFIED)	
DECIMALS	ANGLES
.X ±.1	X°
.XX ±.02	
.XXX ±.010	
DESIGNED BY:	DATE:
A. Wright	03/11
CHECKED BY:	DATE:
B. Oliver	03/11

- NOTES:
- DERATING OF FORWARD CURRENT PER SEGMENT, 0.30mA/°C at T ≥ 25°C
  - ACCEPTS BIVAR FLEXIBLE LIGHT PIPE STYLE FLPS2031

REV.	SEE SHEET #1

Part Number	Chip			Absolute Maximum Ratings Per Segment			Elect @ V [V] TY
	Emitted Color	$\lambda_D$ [nm]		$P_d$ [mW]	$I_f$ [mA]	Peak $I_f$ [mA]	
		MIN	TYP				
SMTV01-Y19	YELLOW	-	589	-	65	25	100
SMTV01-Y27		-	589	-	65	25	100
SMTV01-Y35		-	589	-	65	25	100

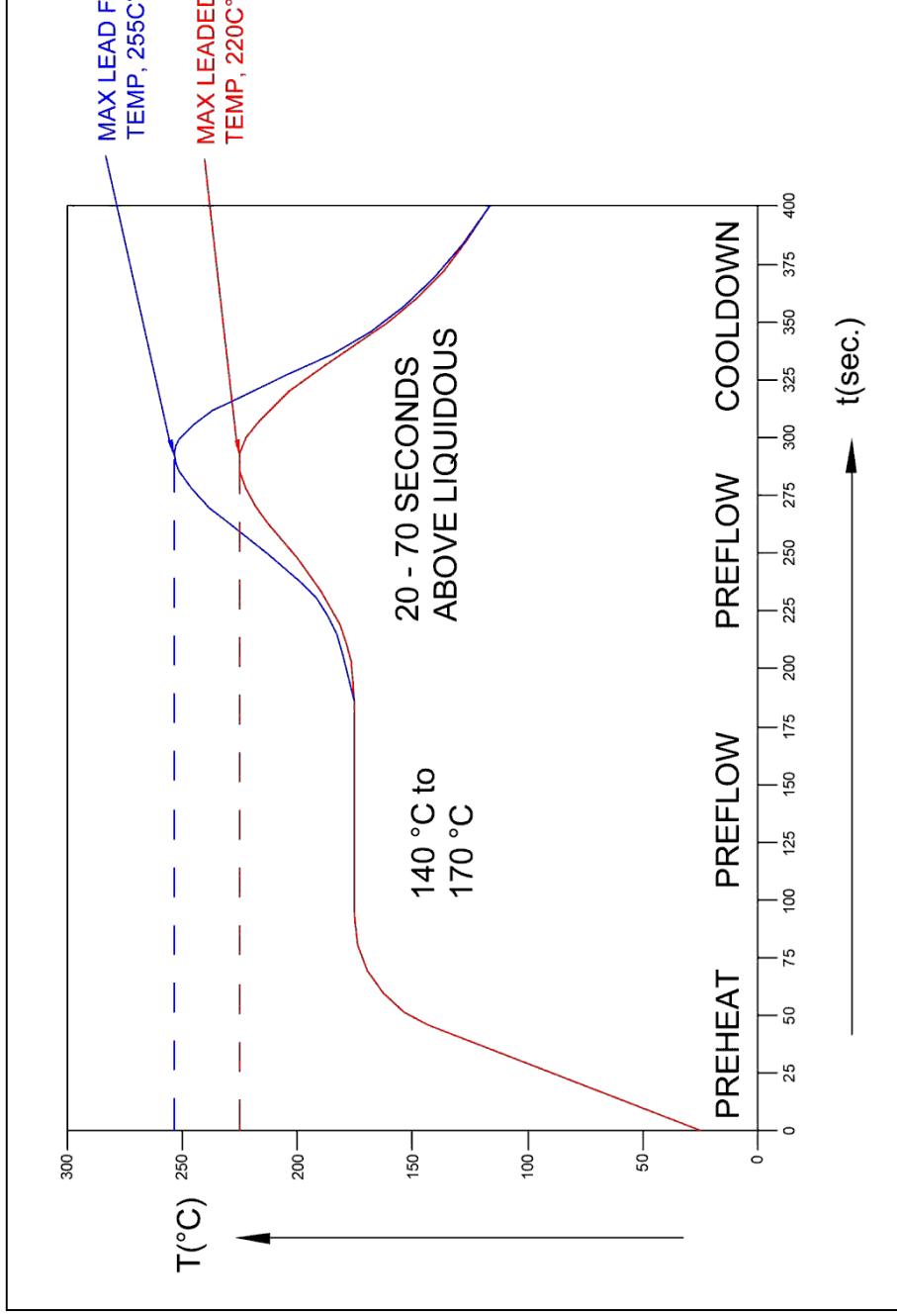
Note: 10% Duty Cycle, Pulse Width  $\leq 0.1$ msec for Peak  $I_f$ .

STANDARD TOLERANCES (UNLESS OTHERWISE SPECIFIED)	
DECIMALS	ANGLES
.X $\pm .1$	X°
.XX $\pm .02$	
.XXX $\pm .010$	DATE: <b>03/1</b>
DESIGNED: <b>A. Wright</b>	CHECKED: <b>B. Oliver</b>
DATE: <b>03/1</b>	DATE: <b>03/1</b>

REV.

SEE SHEET #1

# Recommended Reflow Soldering Profile



STANDARD TOLERAN  
(UNLESS OTHERWISE SPECI

DECIMALS ANGU

.X ±.1 X°

.XX ±.02

.XXX ±.010

DESIGNED: **A. Wright**

DATE: **03/1**

CHECKED: **B. Oliver**

DATE: **03/1**

## NOTE:

1. Do not clean after soldering. Only use no-clean solder paste.



## Looking for pricing, stock, or lifecycle information?

Click below to explore more details on WIN SOURCE:

 [View SMTV01-Y19 on WIN SOURCE](#)

 [Bivar Inc. Information](#)

## Optimize Your Supply Chain with WIN SOURCE Solutions

-  Global Sourcing Solution
-  Obsolete Management
-  Cost Control Management
-  Shortage Management
-  Alternative Solution
-  Excess Inventory Management