

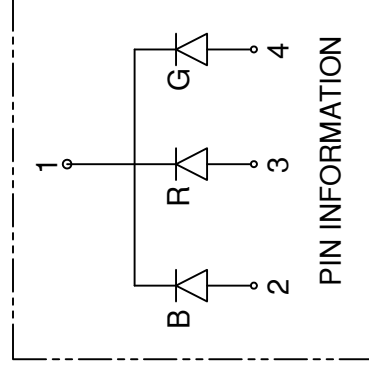
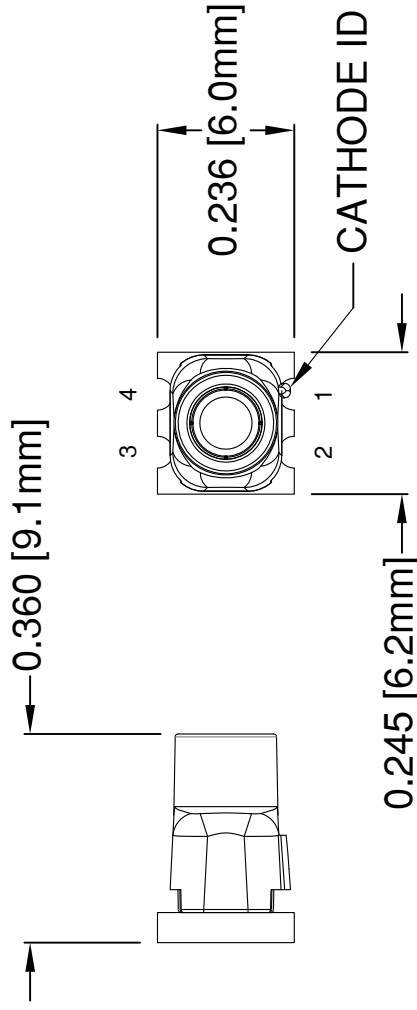
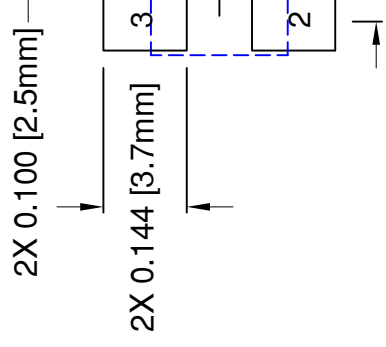


**THE DATASHEET OF  
SMTV01-R17G33B10**



REV.

<b>B</b>	Engineering Release
<b>C</b>	Revised Side View, S
<b>D</b>	Corrected Typo in Re

**RECOMMENDED S****ABSOLUTE MAXIMUM RATINGS at Ta=25°C**

REVERSE VOLTAGE	5V
REVERSE CURRENT	100µA
OPERATING TEMPERATURE RANGE	-35°C - 85°C
STORAGE TEMPERATURE	-35°C - 85°C
MAX SOLDERING TEMPERATURE	260°C FOR 3 SECONDS

STANDARD TOLERANCES  
(UNLESS OTHERWISE SPECIFIED)

DECIMALS	ANGULAR	DEGREE
.X	±.1	X°
.XX	±.02	
.XXX	±.010	



DESIGNED BY:	DATE:
<b>A. Wright</b>	<b>03/11</b>

CHECKED BY:	DATE:
<b>B. Oliver</b>	<b>03/11</b>

**NOTES:**

- DERATING OF FORWARD CURRENT PER SEGMENT, 0.30mA/°C at T ≥ 25°C
- ACCEPTS BIVAR FLEXIBLE LIGHT PIPE STYLE FLPS2031

REV.	SEE SHEET #1

Part Number	Chip			Absolute Maximum Ratings Per Segment			Elem	
	Emitted Color	$\lambda_b$ [nm]			$P_d$ [mW]	$I_f$ [mA]		Peak $I_f$ [mA]
		MIN	TYP	MAX				
SMTV01-R15G15B09	RED	625	628	630	57.5	25	100	MIN 1.7
	GREEN	510	515	520	60	25	100	2.8
	BLUE	460	465	470	60	25	100	2.8
SMTV01-R17G33B10	RED	625	628	630	57.5	25	100	1.7
	GREEN	510	515	520	60	25	100	2.8
	BLUE	460	465	470	60	25	100	2.8


Note: 10% Duty Cycle, Pulse Width  $\leq 0.1$ msec for Peak  $I_f$ .

STANDARD TOLERANCES  
(UNLESS OTHERWISE SPECIFIED)

ANGULAR	X°
DECIMALS	.X ± .1
	.XX ± .02
	.XXX ± .010

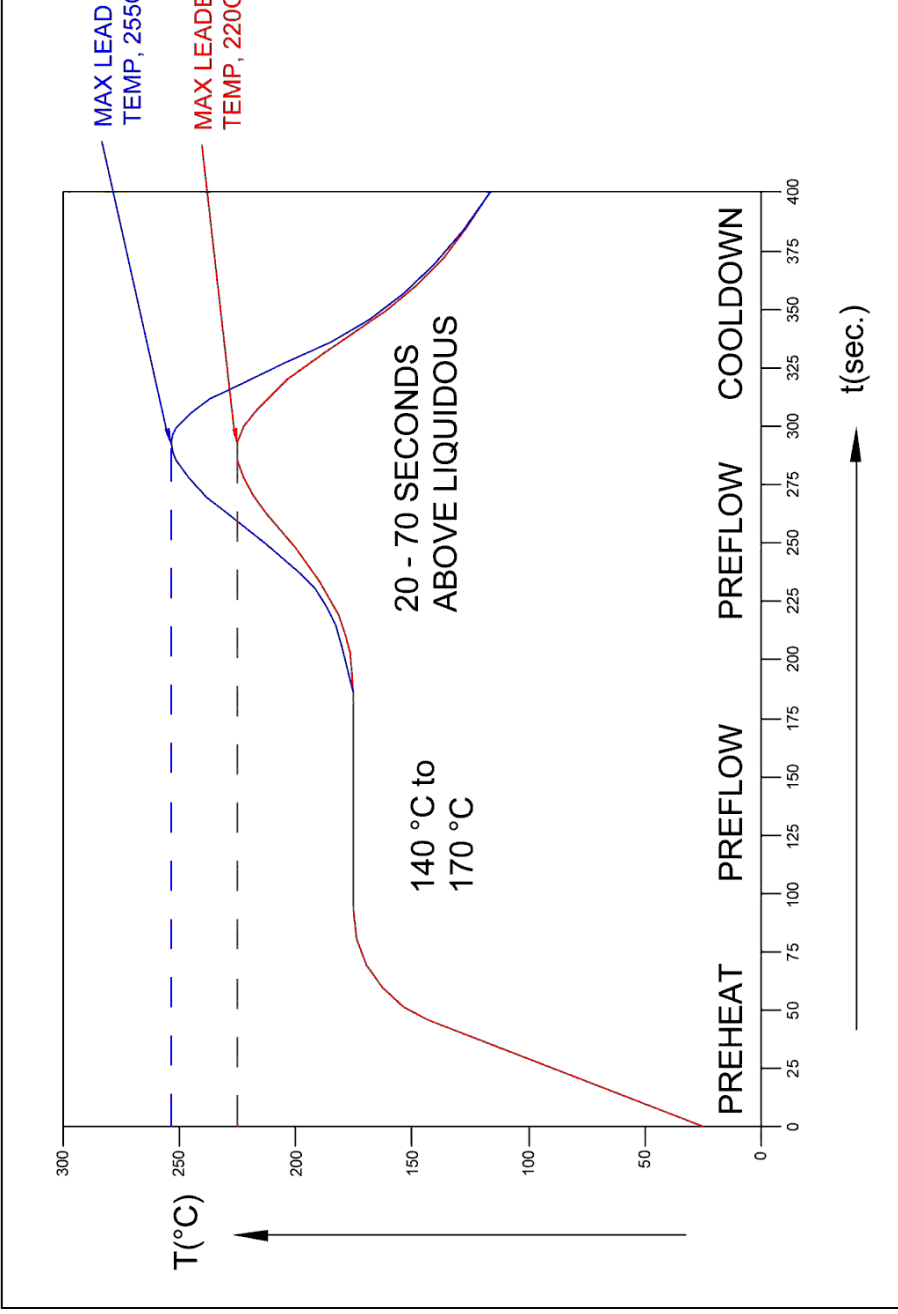
DESIGNED: **A. Wright** DATE: **03/11**

CHECKED: **B. Oliver** DATE: **03/11**



REV.	SEE SHEET #1

# Recommended Reflow Soldering Profile



STANDARD TOLERAN (UNLESS OTHERWISE SPECI		ANGU	X°
DECIMALS	.X	±.1	
	.XX	±.02	
	.XXX	±.010	
DESIGNED:	A. Wright	DATE:	03/1
CHECKED:	B. Oliver	DATE:	03/1

**NOTE:**  
1. Do not clean after soldering. Only use no-clean solder paste.



## Looking for pricing, stock, or lifecycle information?

Click below to explore more details on WIN SOURCE:

 [View SMTV01-R17G33B10 on WIN SOURCE](#)

 [Bivar Inc. Information](#)

## Optimize Your Supply Chain with WIN SOURCE Solutions

-  Global Sourcing Solution
-  Obsolete Management
-  Cost Control Management
-  Shortage Management
-  Alternative Solution
-  Excess Inventory Management