

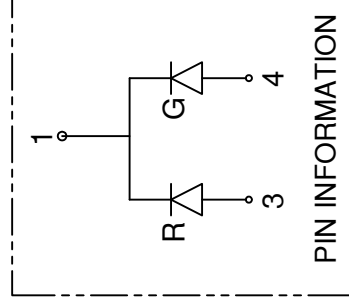
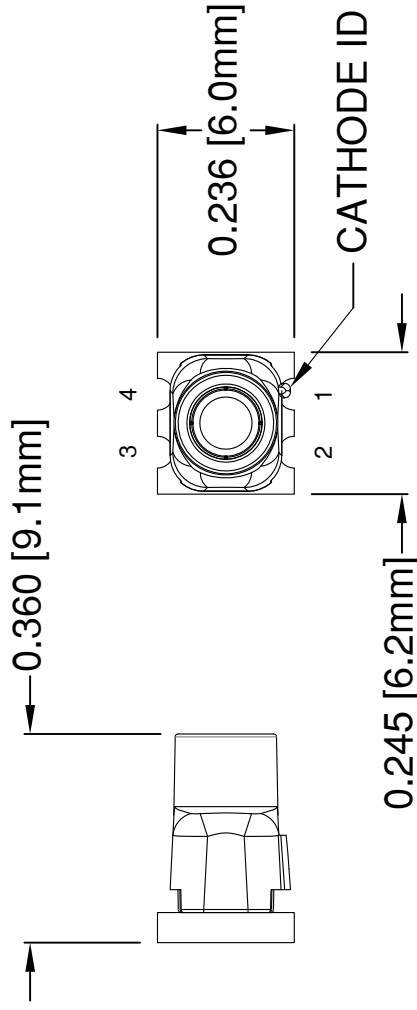
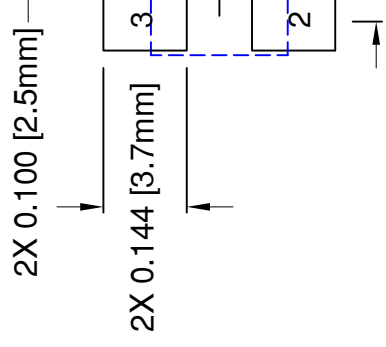


**THE DATASHEET OF  
SMTV01-R15G15**



REV.

**B** Engineering Release  
**C** Revised Side View, S  
**D** Corrected Typo in Re

**RECOMMENDED S****ABSOLUTE MAXIMUM RATINGS at Ta=25°C**

REVERSE VOLTAGE	5V
REVERSE CURRENT	100µA
OPERATING TEMPERATURE RANGE	-35°C - 85°C
STORAGE TEMPERATURE	-35°C - 85°C
MAX SOLDERING TEMPERATURE	260°C FOR 3 SECONDS

STANDARD TOLERANCES  
(UNLESS OTHERWISE SPECIFIED)

DECIMALS	ANGLES
.X ±.1	X°
.XX ±.02	
.XXX ±.010	



DESIGNED:	DATE:
<b>A. Wright</b>	<b>03/11</b>
CHECKED:	DATE:
<b>B. Oliver</b>	<b>03/11</b>


**NOTES:**

- DERATING OF FORWARD CURRENT PER SEGMENT, 0.30mA/°C at T≥25°C
- ACCEPTS BIVAR FLEXIBLE LIGHT PIPE STYLE FLPS2031

REV.	SEE SHEET #1

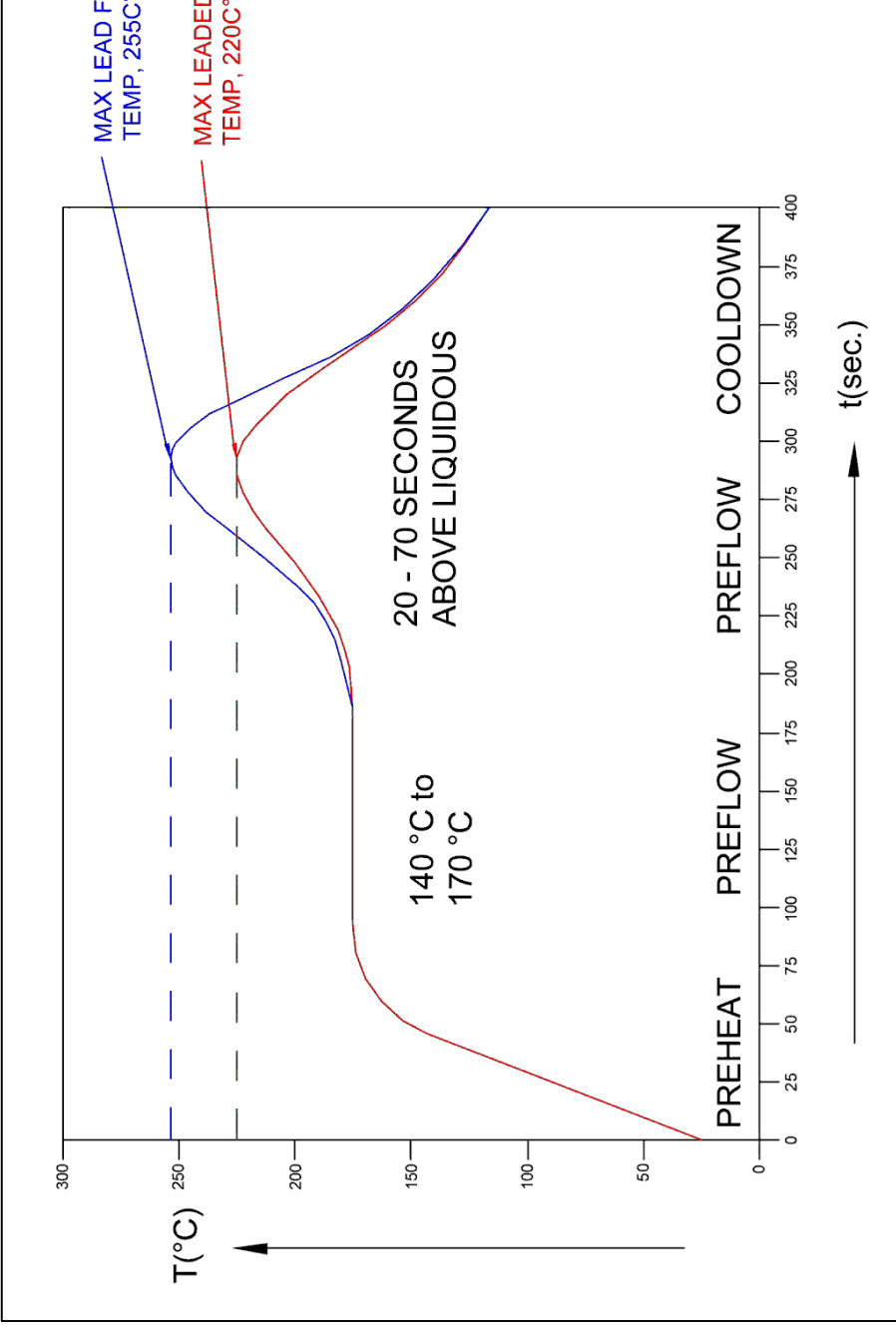
Part Number	Chip			Absolute Maximum Ratings Per Segment			Elec @ [V]		
	Emitted Color	$\lambda_d$ [nm]		$P_d$ [mW]	$I_f$ [mA]	Peak $I_f$ [mA]			
		MIN	TYP					MAX	
SMTV01-R15G15	RED	625	628	630	60	25	100	1.7	2.
	GREEN	510	515	520	100	25	100	2.8	3.
SMTV01-R16G33	RED	625	628	630	60	25	100	1.7	2.
	GREEN	510	515	520	100	25	100	2.8	3.

Note: 10% Duty Cycle, Pulse Width  $\leq 0.1$ msec for Peak  $I_f$ .

STANDARD TOLERANCES (UNLESS OTHERWISE SPECIFIED)	
DECIMALS	ANGLES
.X $\pm .1$	X°
.XX $\pm .02$	
.XXX $\pm .010$	DATE: <b>03/11</b>
DESIGNED: <b>A. Wright</b>	CHECKED: <b>B. Oliver</b>
DATE: <b>03/11</b>	DATE: <b>03/11</b>

REV.	SEE SHEET #1

# Recommended Reflow Soldering Profile



STANDARD TOLERAN (UNLESS OTHERWISE SPECI	
DECIMALS	ANGU
.X ±.1	X°
.XX ±.02	
.XXX ±.010	
DESIGNED:	DATE:
A. Wright	03/1
CHECKED:	DATE:
B. Oliver	03/1

**NOTES:**  
 1. Do not clean after soldering. Only use no-clean solder paste.



## Looking for pricing, stock, or lifecycle information?

Click below to explore more details on WIN SOURCE:

 [View SMTV01-R15G15 on WIN SOURCE](#)

 [Bivar Inc. Information](#)

## Optimize Your Supply Chain with WIN SOURCE Solutions

-  Global Sourcing Solution
-  Obsolete Management
-  Cost Control Management
-  Shortage Management
-  Alternative Solution
-  Excess Inventory Management