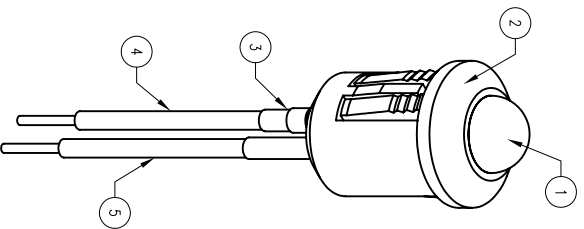




**THE DATASHEET OF
SSI-LXR5010UB28230**



PART NUMBER	SSI-LXR5010UB28230		REV.	A
DATE	E.C.N. NUMBER AND REVISION COMMENTS		REV.	
12.12.11	#10BRDR.		REV.	A



ELECTRO-OPTICAL CHARACTERISTICS $T_A=25^{\circ}\text{C}$ $V_f=28\text{V}$

PARAMETER	MIN	TYP	MAX	UNITS	TEST COND
PEAK WAVELENGTH	470			nm	
FORWARD VOLTAGE		28		V_f	$I_f=100\mu\text{A}$
REVERSE VOLTAGE	5.0			V_r	$V_f=28\text{V}$
AXIAL INTENSITY		60		med	
VIEWING ANGLE		60		2θ theo	
EMITTED COLOR		BLUE			
EPOXY LENS FINISH	BLUE DIFFUSED				

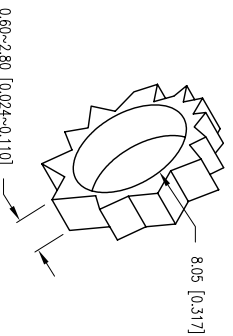
LIMITS OF SAFE OPERATION AT 25°C PER DIE

PARAMETER	MAX	UNITS
PEAK FORWARD VOLTAGE	29.5	V
STEADY CURRENT	18	mA
POWER DISSIPATION	500	mW
DERATE FROM 25°C	-1.2	mW/°C
OPERATING, STORAGE TEMP.	-40 TO +85	°C
SOLDERING TEMP.	+260	°C
2.0mm FROM BODY		3 SEC. MAX

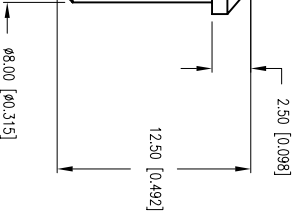
NOTES:

- SSI-LXR503USBD, BLUE LED, TRIM LEADS TO 5mm.
- SSH-RH5010, BLACK HOLDER.
- LXP-HENTSHRNK-3, (2 PCS.) 1/8" x 50mm.
- ANODE LEAD: LXP-WST24RDT0C, CUT 180mm LONG, STRIP ENDS 3mm & 9.5mm.
- CATHODE LEAD: LXP-WST24BLT0C, CUT 210mm LONG, STRIP ENDS 3mm & 9.5mm.
- LXP-RCS 2000 1/2W, CUT 22-24mm.

CAUTION: PRESSURE SENSITIVE ASSEMBLY
AVOID APPLYING PRESSURE TO LED
DURING PANEL ASSEMBLY.



PANEL OUTPUT



ø9.50 [ø0.374]

HELEN ROAD
E. I. L 60067-6976
+1.847.359.2790
WWW.LUMEX.COM

T-5mm, 470nm ULTRA BLUE LED PANEL INDICATOR, BLUE DIFFUSED LENS, 9" WIRE LEADS, 28 VOLTS.

THE SPECIFICATIONS MAY CHANGE AT ANY TIME WITHOUT NOTICE DUE TO NEW MATERIALS OR PRODUCT IMPROVEMENT.

CONFIDENTIAL INFORMATION
THE INFORMATION CONTAINED IN THIS DOCUMENT IS THE PROPERTY OF LUMEX INC. EXCEPT AS SPECIFICALLY AUTHORIZED IN WRITING BY LUMEX INC., THE HOLDER OF THIS DOCUMENT SHALL KEEP ALL INFORMATION CONTAINED HEREIN CONFIDENTIAL AND SHALL PROTECT SAME IN WHOLE OR IN PART FROM DISCLOSURE AND DISSEMINATION TO ALL THIRD PARTIES.

UNCONTROLLED DOCUMENT

DATE:	12.12.11	DRAWN BY:	AB
PAGE:	1 OF 1	CHKD BY:	SS
SCALE:	NTS	APRVD BY:	JD
UNIT:	mm [INCH]		



Looking for pricing, stock, or lifecycle information?

Click below to explore more details on WIN SOURCE:

- ⊖ [View SSI-LXR5010UB28230 on WIN SOURCE](#)
- ⊖ [Lumex Opto/Components Inc. Information](#)

Optimize Your Supply Chain with WIN SOURCE Solutions

- ✓ Global Sourcing Solution
- ✓ Obsolete Management
- ✓ Cost Control Management
- ✓ Shortage Management
- ✓ Alternative Solution
- ✓ Excess Inventory Management