



**THE DATASHEET OF
SSI-RM3091GD-150**

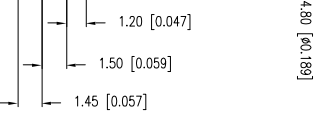
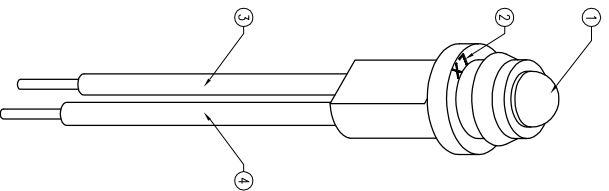


PART NUMBER	SSI-RM3091GD-150	REV.	-
-------------	------------------	------	---

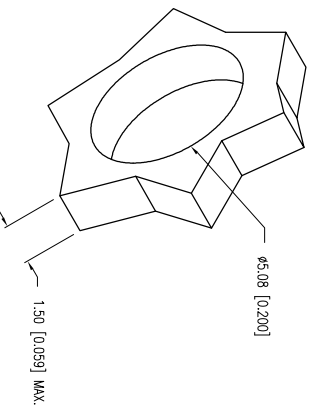
ELECTRO-OPTICAL CHARACTERISTICS $I_A=25^\circ\text{C}$ $I_F=20\text{mA}$					
PARAMETER	MIN	TYP	MAX	UNITS	TEST COND
PEAK WAVELENGTH		565		nm	
FORWARD VOLTAGE		2.2	2.6	V_F	$I_F=100\mu\text{A}$
REVERSE VOLTAGE	5.0			V_R	
AXIAL INTENSITY		20		mcad	$I_F=20\text{mA}$
VIEWING ANGLE		60		2λ theta	
EMITTED COLOR:	GREEN				
EPOXY LENS FINISH:	GREEN DIFFUSED				

LIMITS OF SAFE OPERATION AT 25°C			
PARAMETER	MAX		UNITS
PEAK FORWARD CURRENT*	150		mA
STEADY CURRENT	25		mA
POWER DISSIPATION	105		mW
DERATE FROM 25°C	-1.2		mW/°C
OPERATING TEMP.	-40 TO +85		°C
STORAGE TEMP.	-40 TO +85		°C

* I<I₀US



PANEL CUTOOUT



- NOTES:
- SSI-1X306F4QD, GREEN LED.
 - SSH-RM3091, BLACK RUBBER HOUSING.
 - ANODE LEAD: LXP-WSTZ6R0T0C, 26 AWG STRANDED, RED INSULATION, CUT 160mm LONG, STRIP 2mm & 9.5mm.
 - CATHODE LEAD: LXP-WSTZ6RBL0C, 26 AWG STRANDED, BLACK INSULATION, CUT 160mm LONG, STRIP 2mm & 9.5mm.
 - CRIMP OR SOLDER WIRE LEADS TO LED LEADS.

E: X=±1 (±0.039), XX=±0.5 (±0.020), XXX=±0.25 (±0.010), XXXX=±0.127 (±0.005), LEAD SIZE=±0.05 (±0.002), LEAD LENGTH=±0.75 (±0.030), MIN=+0.000, DECIMAL PRECISION MAX.=+0.00		DATE: 01.21.02		DRAWN BY: AB	
HELEN ROAD LINE, IL 60067-6976 E: +1.847.359.2790 +1.847.359.6538 WWW.LUMEX.COM		T-3mm 565nm GREEN LED PANEL INDICATOR, GREEN DIFFUSED LENS, 6" WIRE LEADS.		PAGE: 1 OF 1	
		THE SPECIFICATIONS MAY CHANGE AT ANY TIME WITHOUT NOTICE DUE TO NEW MATERIALS OR PRODUCT IMPROVEMENT.		CHKD BY: --	
		CONFIDENTIAL INFORMATION		APPRD BY: KF	
		THE INFORMATION CONTAINED IN THIS DOCUMENT IS THE PROPERTY OF LUMEX INC. EXCEPT AS SPECIFICALLY AUTHORIZED IN WRITING BY LUMEX INC., THE HOLDER OF THIS DOCUMENT SHALL KEEP ALL INFORMATION CONTAINED HEREIN CONFIDENTIAL, AND SHALL PROTECT SAME IN WHOLE OR IN PART FROM DISCLOSURE AND DISSEMINATION TO ALL THIRD PARTIES.		UNIT: mm [INCH]	
		UNCONTROLLED DOCUMENT		(R)	

Looking for pricing, stock, or lifecycle information?

Click below to explore more details on WIN SOURCE:

- ⊖ [View SSI-RM3091GD-150 on WIN SOURCE](#)
- ⊖ [Lumex Opto/Components Inc. Information](#)

Optimize Your Supply Chain with WIN SOURCE Solutions

- ✓ Global Sourcing Solution
- ✓ Obsolete Management
- ✓ Cost Control Management
- ✓ Shortage Management
- ✓ Alternative Solution
- ✓ Excess Inventory Management