



**THE DATASHEET OF
SSI-LXH387SID-150**

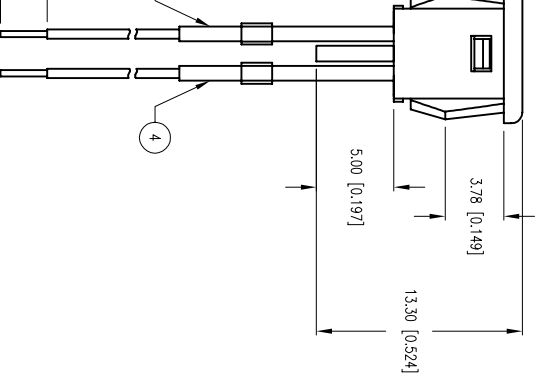
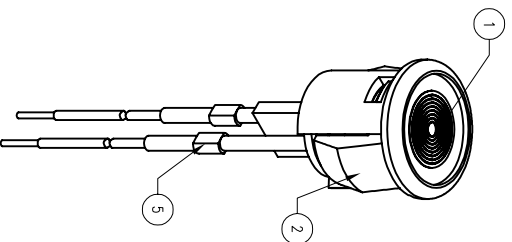
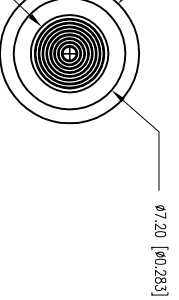


PRELIMINARY IN P/N DIR

PART NUMBER	SSI-LXH387SID-150	REV.	A
DATE	E.C.N. NUMBER AND REVISION COMMENTS	REV.	
03.23.11	E.C.N. #10BRDR. & REDRAWN.	REV.	A

ELECTRO-OPTICAL CHARACTERISTICS TA=25°C If = 20mA

PARAMETER	MIN	TYP	MAX	UNITS	TEST COND
PEAK WAVELENGTH		636		nm	
FORWARD VOLTAGE		2.0	2.5	Vf	If = 100µA
REVERSE VOLTAGE	5.0			Vr	
AXIAL INTENSITY		60		med	If = 20mA
VIEWING ANGLE		120		2x theta	
EMITTED COLOR:		RED			
EPOXY LENS FINISH:		RED DIFFUSED			



LIMITS OF SAFE OPERATION AT 25°C

PARAMETER	MAX	UNITS
PEAK FORWARD CURRENT*	150	mA
STEADY CURRENT	30	mA
POWER DISSIPATION	105	mW
DERATE FROM 25°C	-1.2	mW/°C
OPERATING, STORAGE TEMP.	-40 TO +85	°C
SOLDERING TEMP.	+260	°C
2.0mm FROM BODY		3 SEC. MAX
* t < 10µS		

NOTES:

1. SSI-LX433SID LED.
2. HOLDER: LXP-SSI-387BSH, LXP-SSI-387BZL
3. ANODE LEAD: LXP-WS174R0T0C STRANDED, CUT 135mm, STRIP 4mm & 9mm.
4. CATHODE LEAD: LXP-WS174R1T0C STRANDED, CUT 135mm, STRIP 4mm & 9mm.
5. CRIMP LEADS EXTERNAL TO HOUSING. HEAT SHRINK OVER CRIMP-2 PLUS.
6. PANEL HOLE CUT OUT: 3/16" DIAMETER.

X±1 (+0.039), X±±0.5 (+0.020), XX±±0.25 (+0.010), XXX±±0.127 (+0.005), LEAD SIZE=±0.05 (+0.002), LEAD LENGTH=±0.75 (+0.030), MIN± ±0.001 DECMAL PRECISION MAX± ±0.001 DECMAL PRECISION

HELEN ROAD
E. IL 60067-6976
+1.847.359.2790
WWW.LUMEX.COM

T-5 FRESNEL LENS PANEL INDICATOR, 636nm SUPER RED LED, RED DIFFUSED LENS, 6" WIRE LEADS.

THE SPECIFICATIONS MAY CHANGE AT ANY TIME WITHOUT NOTICE DUE TO NEW MATERIALS OR PRODUCT IMPROVEMENT

CONFIDENTIAL INFORMATION
THE INFORMATION CONTAINED IN THIS DOCUMENT IS THE PROPERTY OF LUMEX INC. EXCEPT AS SPECIFICALLY AUTHORIZED IN WRITING BY LUMEX INC., THE HOLDER OF THIS DOCUMENT SHALL KEEP ALL INFORMATION CONTAINED HEREIN CONFIDENTIAL, AND SHALL PROTECT SAME IN WHOLE OR IN PART FROM DISCLOSURE AND DISSEMINATION TO ALL THIRD PARTIES.

UNCONTROLLED DOCUMENT

DATE:	08.02.01	DRAWN BY:	CT
PAGE:	1 OF 1	CHKD BY:	--
SCALE:	NTS	APRVD BY:	KF
UNIT:	mm [INCH]		



Looking for pricing, stock, or lifecycle information?

Click below to explore more details on WIN SOURCE:

- ⊖ [View SSI-LXH387SID-150 on WIN SOURCE](#)
- ⊖ [Lumex Opto/Components Inc. Information](#)

Optimize Your Supply Chain with WIN SOURCE Solutions

- ✓ Global Sourcing Solution
- ✓ Obsolete Management
- ✓ Cost Control Management
- ✓ Shortage Management
- ✓ Alternative Solution
- ✓ Excess Inventory Management