



# THE DATASHEET OF SDXL005D4



## SDXL005D4

0 -5" H2O Compensated Pressure Sensors in a DIP Package

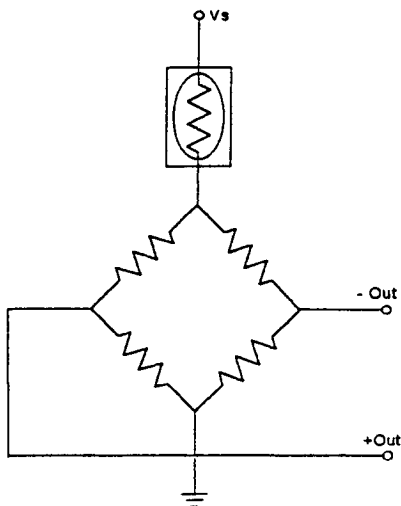
### Features

- Low Cost DIP
- Temperature Compensated
- Calibrated Zero and Span
- Small Size
- Low Noise
- High Impedance for Low Power Applications

### Applications

- Medical Equipment
- Computer Peripherals
- Pneumatic Controls
- HVAC

### Equivalent Circuit



### General Description

**Preliminary**

The SDX series sensors will provide a very cost effective solution for pressure applications that require small size plus performance. These calibrated and temperature compensated sensors give an accurate and stable output over a 0°C to 50°C temperature range. This series is intended for use with non-corrosive, non-ionic working fluids such as air, dry gases and the like.

The SDXL005D4 devices are specifically designed to measure low pressures. They feature a 0 to 5 IN H2O full scale pressure range.

The output of the bridge is ratiometric to the supply voltage and operation from any D.C. supply voltage up to +20 V is acceptable.

The SDX devices feature an integrated circuit sensor element and laser trimmed thick film ceramic housed in a compact solvent resistant case. The package is a double wide (i.e., 0.600" lead spacing) dual-inline-package. This is the same familiar package used by IC manufacturers except it has integral pressure port(s). The pc board area used by each DIP is approximately 0.26 square inches. This extremely small size enables the use of multiple sensors in limited available space.

The DIP mounts on a pc board like a standard IC with through-hole pins. The pins anchor the pressure sensor to the pc board and provide a more secure and stable unit than other types of packages.

**Pressure Sensor Characteristics (all devices)****Maximum Ratings**

Supply Voltage $V_S$	+20 Vdc
Maximum Pressure on any port	50 psig
Lead Temperature (soldering 2-4 sec.)	250°C
Burst Pressure	10 psi

**Environmental Specifications**

Temperature Ranges	
Compensated	0°C to 50°C
Operating	-40°C to +85°C
Storage	-55°C to +125°C
Humidity Limits	0 to 100% RH

**Standard Pressure Ranges**

part number	operating pressure	proof pressure	FULL SCALE SPAN <sup>(2)</sup>		
			minimum	typical	maximum
SDXL005D4	0 - 5 InH2O	200 InH2O	24.5 mV	25.0 mV	25.5 mV

**Performance Characteristics** <sup>(1)</sup>

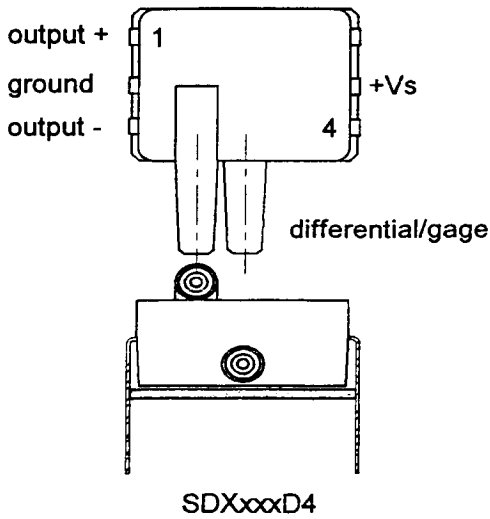
Characteristic	minimum	typical	maximum	units
zero pressure offset	-1.0	0	+1.0	mV
combined linearity & hysteresis <sup>(3)</sup>	--	±0.2	±1.0	% FSS
temp. effect on span (0-50°C) <sup>(4)</sup>	--	±0.4	±2.0	%FSS
temp. effect on offset (0-50°C) <sup>(4)</sup>	--	±0.2	±0.6	mV
repeatability <sup>(5)</sup>	--	±0.2	--	%FSS
input impedance <sup>(6)</sup>	--	20.0	--	kΩ
output impedance <sup>(7)</sup>	--	7.0	--	kΩ
common mode voltage <sup>(8)</sup>	0.75	3.0	5.5	Vdc
response time <sup>(9)</sup>	--	100	--	μsec
long term stability of offset & span <sup>(10)</sup>	--	±0.1	--	%FSS

**Specification Notes:**

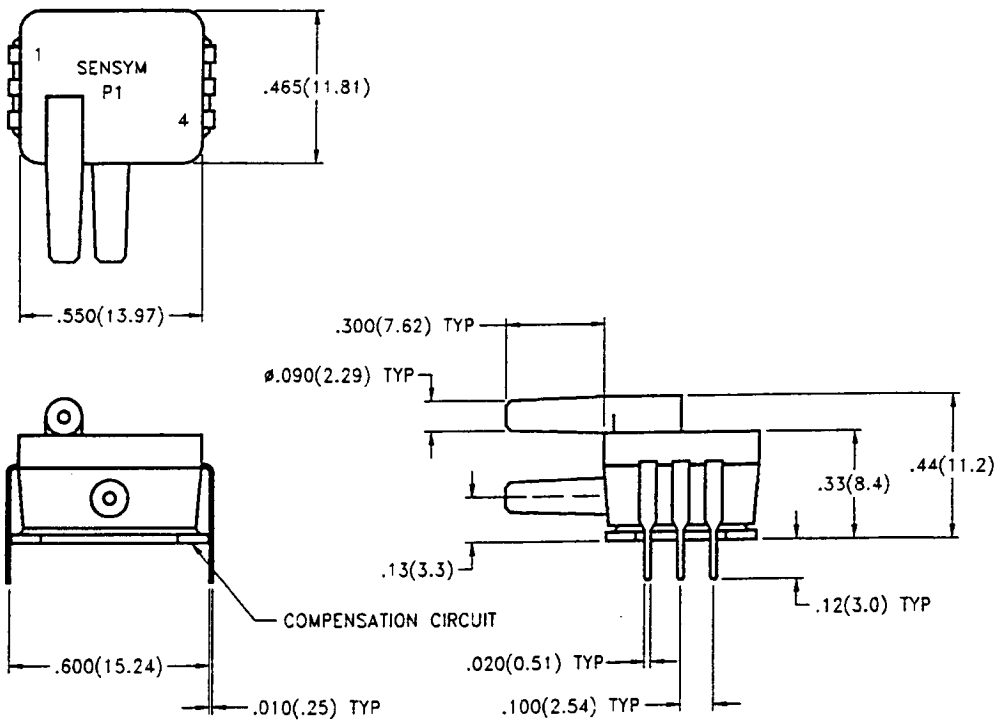
- Note 1:** Reference Conditions (unless otherwise noted): supply voltage,  $V_S=12$  Vdc;  $T_A=25^\circ\text{C}$ ; common mode line pressure=0 psig; pressure applied to port 2.
- Note 2:** Span is the algebraic difference between the output voltage at full scale pressure and the output at zero pressure. Span is ratiometric to the supply voltage.
- Note 3:** Hysteresis is the maximum output difference at any point within the operating pressure range for increasing and decreasing pressure.
- Note 4:** Maximum error band of the offset voltage and the error band of the span, relative to the  $25^\circ\text{C}$  reading.
- Note 5:** Maximum difference in output at any pressure with the operating pressure range and temperature within  $0^\circ\text{C}$  to  $+50^\circ\text{C}$  after:  
a) 100 temperature cycles,  $0^\circ\text{C}$  to  $+50^\circ\text{C}$ .  
b) 1.0 million pressure cycles, 0 psi to full scale span.
- Note 6:** Input impedance is the impedance between  $V_S$  and ground.
- Note 7:** Output impedance is the impedance between the + and - outputs.
- Note 8:** This is the common mode voltage of the output arms for  $V_S=12$  Vdc.
- Note 9:** Response time for a 0 psi to full scale span pressure step change, 10% to 90% rise time.
- Note 10:** Long term stability over a one year period.

Electrical Connections

**Preliminary**



Physical Dimensions



Ordering Information

pressure range	absolute	gage	differential/gage
0-5 InH2O	--	--	SDXL005D4

SenSym reserves the right to make changes to any products herein. SenSym does not assume any liability arising out of the application or use of any product or circuit described herein, neither does it convey any license under its patent rights nor the rights of others.

SenSym  
1804 McCarthy Boulevard  
Milpitas, CA 95035

Tel: (408) 954-1100  
Fax: (408) 954-9458  
Internet: www. Sensym.com







## Looking for pricing, stock, or lifecycle information?

Click below to explore more details on WIN SOURCE:

 [View SDXL005D4 on WIN SOURCE](#)

 [Honeywell Information](#)

## Optimize Your Supply Chain with WIN SOURCE Solutions

-  Global Sourcing Solution
-  Obsolete Management
-  Cost Control Management
-  Shortage Management
-  Alternative Solution
-  Excess Inventory Management