



THE DATASHEET OF SP10A



C&K SP Series Single In-line Package Switches



DIP



Features/Benefits

- **Thin Single In-line Packaging saves PCB space**
- **Retention feature holds part to PCB prior to soldering**
- **Available in vertical or right angle models**
- **High pressure contact system does not require tape sealing**
- **RoHS compliant - options available**

Typical Applications

- **Address switch for industrial controls**
- **Logic switching for computers and peripherals**
- **Function controlling for numerous applications**

How To Order

Complete part numbers for SP Series standard profile SIP Switches are shown on pages I-18 thru I-19.

Specifications

CONTACT RATING:

Carry: 100 mA

Switching: 10 mA

MECHANICAL AND ELECTRICAL LIFE: 1,000 cycles min.

CONTACT RESISTANCE: 50 MΩ max. @ 20 V DC 10mA.

INSULATION RESISTANCE: 100 MΩ min. @ 100 V DC.

DIELECTRIC STRENGTH: 1 minute @ 300 V AC.

CAPACITANCE: 5pF max. between adjacent terminals.

OPERATING TEMPERATURE: -20°C to 85°C.

STORAGE TEMPERATURE: -40°C to 85°C.

OPERATING FORCE: 800 grams max.

SOLDERABILITY: Dip & look solderability testing per C&K spec.

#448. Unplated edges of terminals permitted.

PACKAGING: Switches supplied in rigid dispensing tubes in full-tube quantities only, this may affect order quantity. Numbers of switches per tube varies with model.

Materials

HOUSING AND COVER: PBT resin (UL94V-0).

RoHS, Version PPS (UL94V-0).

ACTUATOR: 4/6 Nylon (UL 94V-0).

MOVABLE CONTACT: Beryllium copper alloy, gold over nickel plate.

FIXED CONTACT: Copper alloy, nickel minimum plated.

CLIP: Tin plated phosphor bronze wire. Phosphor bronze, nickel minimum plated.

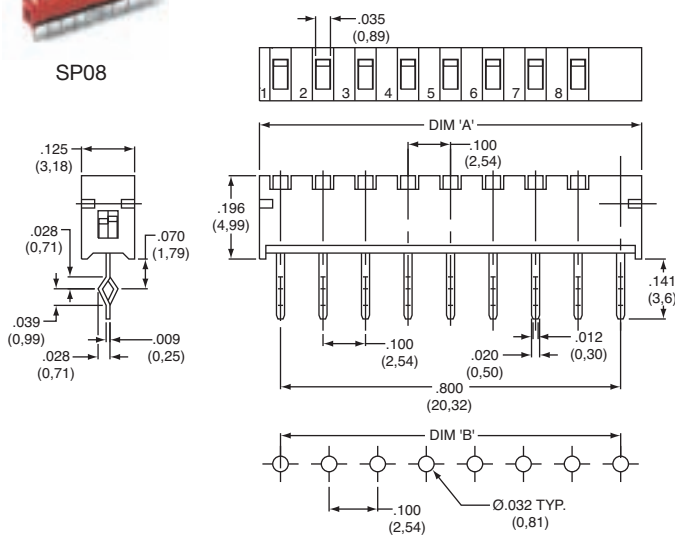
NOTE: For the latest information regarding RoHS compliance, please go to: www.ittcannon.com/rohs.

Note: Specifications and materials listed above are for switches with standard options. For information on specific and custom switches, consult Customer Service Center.

Vertical



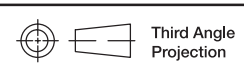
SP08



ROHS PART NUMBER	TIN LEAD PART NUMBER	NO. POS.	DIM. 'A'	DIM. 'B'	QUANTITY PER TUBE
SP02B	SP02	2	.298 (7,58)	.200 (5,08)	60
SP04B	SP04	4	.498 (12,66)	.400 (10,16)	35
SP06B	SP06	6	.698 (17,74)	.600 (15,24)	25
SP08B	SP08	8	.898 (22,82)	.800 (20,32)	20
SP10B	SP10	10	1.098 (27,9)	1.000 (25,40)	15

Schematic

SPST



Dimensions are shown: Inch (mm)
Specifications and dimensions subject to change

C&K SP Series Single In-line Package Switches



DIP

Right Angle

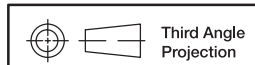
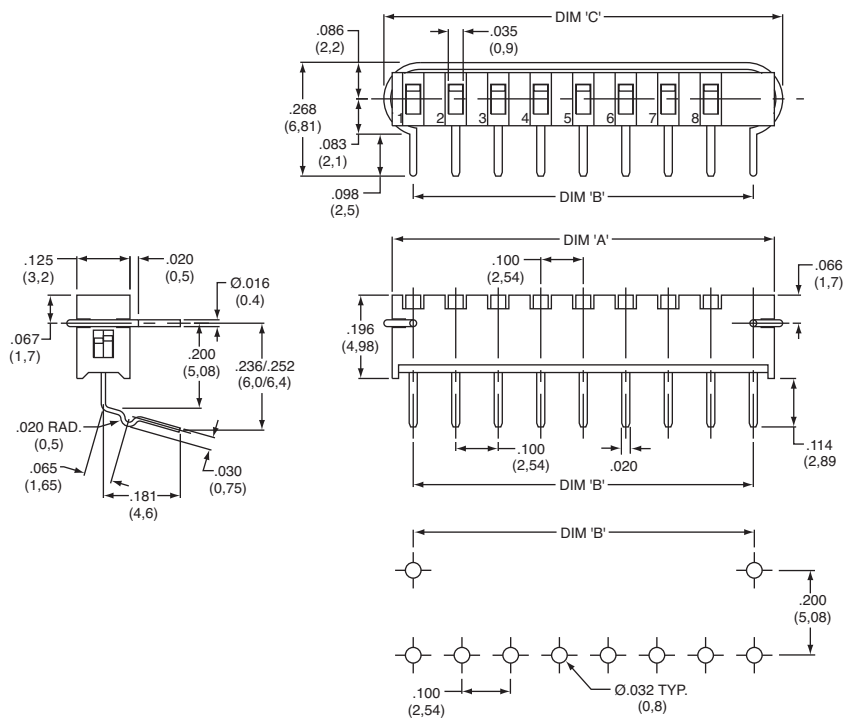
ROHS PART #	PART TIN LEAD #	NO.POS.	DIM. 'A'	DIM. 'B'	DIM. 'C'	QUANTITY PER TUBE
SP02AB	SP02A	2	.298 (7,58)	.200 (5,08)	.338 (8,58)	50
SP04AB	SP04A	4	.498 (12,66)	.400 (10,16)	.538 (13,66)	35
SP06AB	SP06A	6	.698 (17,74)	.600 (15,24)	.738 (18,74)	25
SP08AB	SP08A	8	.898 (22,82)	.800 (20,32)	.938 (23,82)	20
SP10AB	SP10A	10	1.098 (27,9)	1.000 (25,40)	1.138 (28,9)	15

Schematic

SPST





SP08A



Dimensions are shown: Inch (mm)
Specifications and dimensions subject to change

Looking for pricing, stock, or lifecycle information?

Click below to explore more details on WIN SOURCE:

-  [View SP10A](#) on WIN SOURCE
-  [C&K Components](#) Information

Optimize Your Supply Chain with WIN SOURCE Solutions

-  Global Sourcing Solution
-  Obsolete Management
-  Cost Control Management
-  Shortage Management
-  Alternative Solution
-  Excess Inventory Management