



# THE DATASHEET OF SP02AB



# C&K SP Series Single In-line Package Switches



DIP



## Features/Benefits

- **Thin Single In-line Packaging saves PCB space**
- **Retention feature holds part to PCB prior to soldering**
- **Available in vertical or right angle models**
- **High pressure contact system does not require tape sealing**
- **RoHS compliant - options available**

## Typical Applications

- **Address switch for industrial controls**
- **Logic switching for computers and peripherals**
- **Function controlling for numerous applications**

## How To Order

Complete part numbers for SP Series standard profile SIP Switches are shown on pages I-18 thru I-19.

## Specifications

### CONTACT RATING:

Carry: 100 mA

Switching: 10 mA

MECHANICAL AND ELECTRICAL LIFE: 1,000 cycles min.

CONTACT RESISTANCE: 50 MΩ max. @ 20 V DC 10mA.

INSULATION RESISTANCE: 100 MΩ min. @ 100 V DC.

DIELECTRIC STRENGTH: 1 minute @ 300 V AC.

CAPACITANCE: 5pF max. between adjacent terminals.

OPERATING TEMPERATURE: -20°C to 85°C.

STORAGE TEMPERATURE: -40°C to 85°C.

OPERATING FORCE: 800 grams max.

SOLDERABILITY: Dip & look solderability testing per C&K spec.

#448. Unplated edges of terminals permitted.

PACKAGING: Switches supplied in rigid dispensing tubes in full-tube quantities only, this may affect order quantity. Numbers of switches per tube varies with model.

## Materials

HOUSING AND COVER: PBT resin (UL94V-0).

RoHS, Version PPS (UL94V-0).

ACTUATOR: 4/6 Nylon (UL 94V-0).

MOVABLE CONTACT: Beryllium copper alloy, gold over nickel plate.

FIXED CONTACT: Copper alloy, nickel minimum plated.

CLIP: Tin plated phosphor bronze wire. Phosphor bronze, nickel minimum plated.

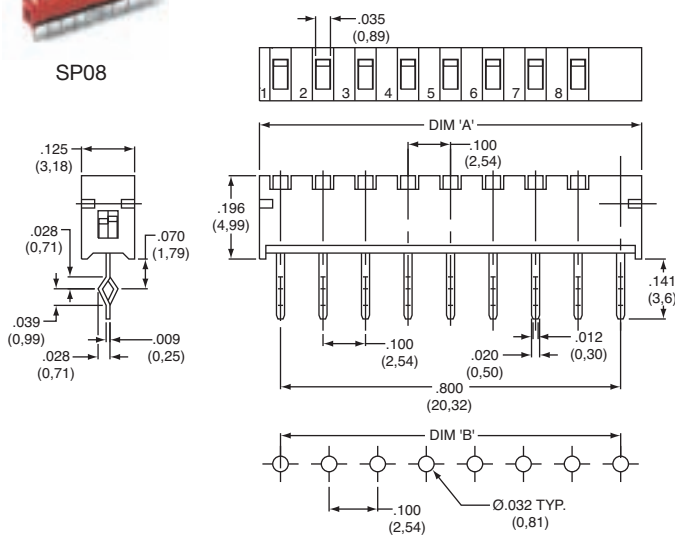
**NOTE:** For the latest information regarding RoHS compliance, please go to: [www.ittcannon.com/rohs](http://www.ittcannon.com/rohs).

**Note:** Specifications and materials listed above are for switches with standard options. For information on specific and custom switches, consult Customer Service Center.

## Vertical



SP08



ROHS PART NUMBER	TIN LEAD PART NUMBER	NO. POS.	DIM. 'A'	DIM. 'B'	QUANTITY PER TUBE
<b>SP02B</b>	<b>SP02</b>	2	.298 (7,58)	.200 (5,08)	60
<b>SP04B</b>	<b>SP04</b>	4	.498 (12,66)	.400 (10,16)	35
<b>SP06B</b>	<b>SP06</b>	6	.698 (17,74)	.600 (15,24)	25
<b>SP08B</b>	<b>SP08</b>	8	.898 (22,82)	.800 (20,32)	20
<b>SP10B</b>	<b>SP10</b>	10	1.098 (27,9)	1.000 (25,40)	15

Schematic

SPST



Dimensions are shown: Inch (mm)  
Specifications and dimensions subject to change

# C&K SP Series Single In-line Package Switches



DIP

## Right Angle

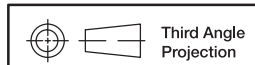
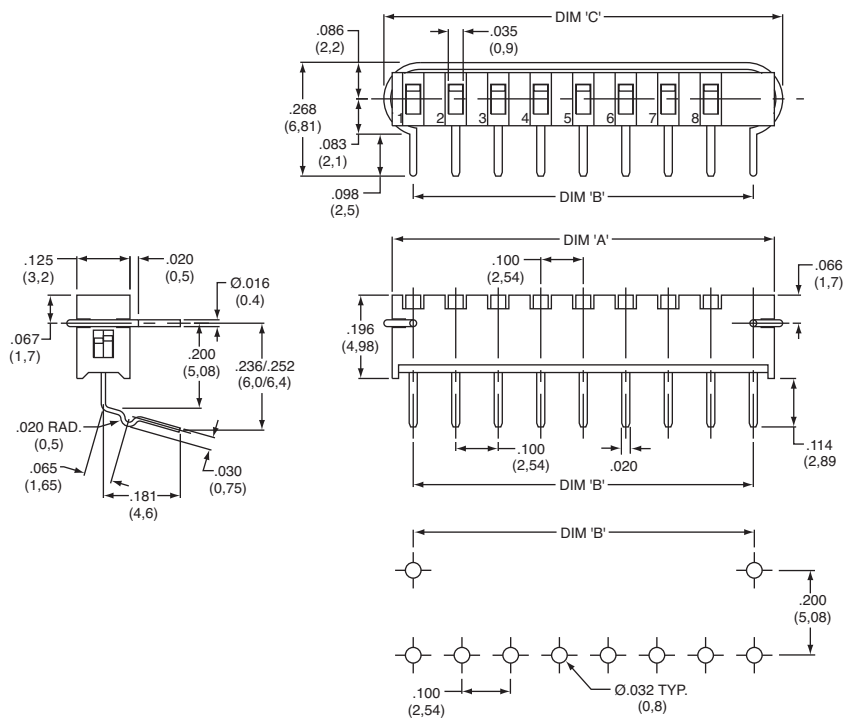


SP08A

ROHS PART #	PART TIN LEAD #	NO.POS.	DIM. 'A'	DIM. 'B'	DIM. 'C'	QUANTITY PER TUBE
SP02AB	SP02A	2	.298 (7,58)	.200 (5,08)	.338 (8,58)	50
SP04AB	SP04A	4	.498 (12,66)	.400 (10,16)	.538 (13,66)	35
SP06AB	SP06A	6	.698 (17,74)	.600 (15,24)	.738 (18,74)	25
SP08AB	SP08A	8	.898 (22,82)	.800 (20,32)	.938 (23,82)	20
SP10AB	SP10A	10	1.098 (27,9)	1.000 (25,40)	1.138 (28,9)	15

Schematic

SPST



Dimensions are shown: Inch (mm)  
Specifications and dimensions subject to change

## Looking for pricing, stock, or lifecycle information?

Click below to explore more details on WIN SOURCE:

- ⊖ [View SP02AB](#) on WIN SOURCE
- ⊖ [C&K Components](#) Information

## Optimize Your Supply Chain with WIN SOURCE Solutions

- ✓ Global Sourcing Solution
- ✓ Obsolete Management
- ✓ Cost Control Management
- ✓ Shortage Management
- ✓ Alternative Solution
- ✓ Excess Inventory Management