



# THE DATASHEET OF SP04B



# C&K SP Series Single In-line Package Switches



DIP



## Features/Benefits

- **Thin Single In-line Packaging saves PCB space**
- **Retention feature holds part to PCB prior to soldering**
- **Available in vertical or right angle models**
- **High pressure contact system does not require tape sealing**
- **RoHS compliant - options available**

## Typical Applications

- **Address switch for industrial controls**
- **Logic switching for computers and peripherals**
- **Function controlling for numerous applications**

## How To Order

Complete part numbers for SP Series standard profile SIP Switches are shown on pages I-18 thru I-19.

## Specifications

### CONTACT RATING:

Carry: 100 mA

Switching: 10 mA

MECHANICAL AND ELECTRICAL LIFE: 1,000 cycles min.

CONTACT RESISTANCE: 50 MΩ max. @ 20 V DC 10mA.

INSULATION RESISTANCE: 100 MΩ min. @ 100 V DC.

DIELECTRIC STRENGTH: 1 minute @ 300 V AC.

CAPACITANCE: 5pF max. between adjacent terminals.

OPERATING TEMPERATURE: -20°C to 85°C.

STORAGE TEMPERATURE: -40°C to 85°C.

OPERATING FORCE: 800 grams max.

SOLDERABILITY: Dip & look solderability testing per C&K spec.

#448. Unplated edges of terminals permitted.

PACKAGING: Switches supplied in rigid dispensing tubes in full-tube quantities only, this may affect order quantity. Numbers of switches per tube varies with model.

## Materials

HOUSING AND COVER: PBT resin (UL94V-0).

RoHS, Version PPS (UL94V-0).

ACTUATOR: 4/6 Nylon (UL 94V-0).

MOVABLE CONTACT: Beryllium copper alloy, gold over nickel plate.

FIXED CONTACT: Copper alloy, nickel minimum plated.

CLIP: Tin plated phosphor bronze wire. Phosphor bronze, nickel minimum plated.

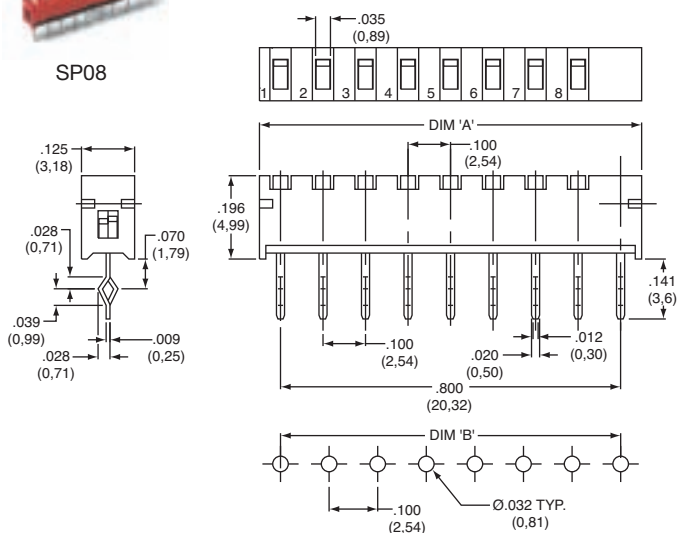
**NOTE:** For the latest information regarding RoHS compliance, please go to: [www.ittcannon.com/rohs](http://www.ittcannon.com/rohs).

**Note:** Specifications and materials listed above are for switches with standard options. For information on specific and custom switches, consult Customer Service Center.

## Vertical



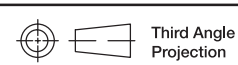
SP08



ROHS PART NUMBER	TIN LEAD PART NUMBER	NO. POS.	DIM. 'A'	DIM. 'B'	QUANTITY PER TUBE
SP02B	SP02	2	.298 (7,58)	.200 (5,08)	60
SP04B	SP04	4	.498 (12,66)	.400 (10,16)	35
SP06B	SP06	6	.698 (17,74)	.600 (15,24)	25
SP08B	SP08	8	.898 (22,82)	.800 (20,32)	20
SP10B	SP10	10	1.098 (27,9)	1.000 (25,40)	15

Schematic

SPST



Dimensions are shown: Inch (mm)  
Specifications and dimensions subject to change

# C&K SP Series Single In-line Package Switches



DIP

## Right Angle

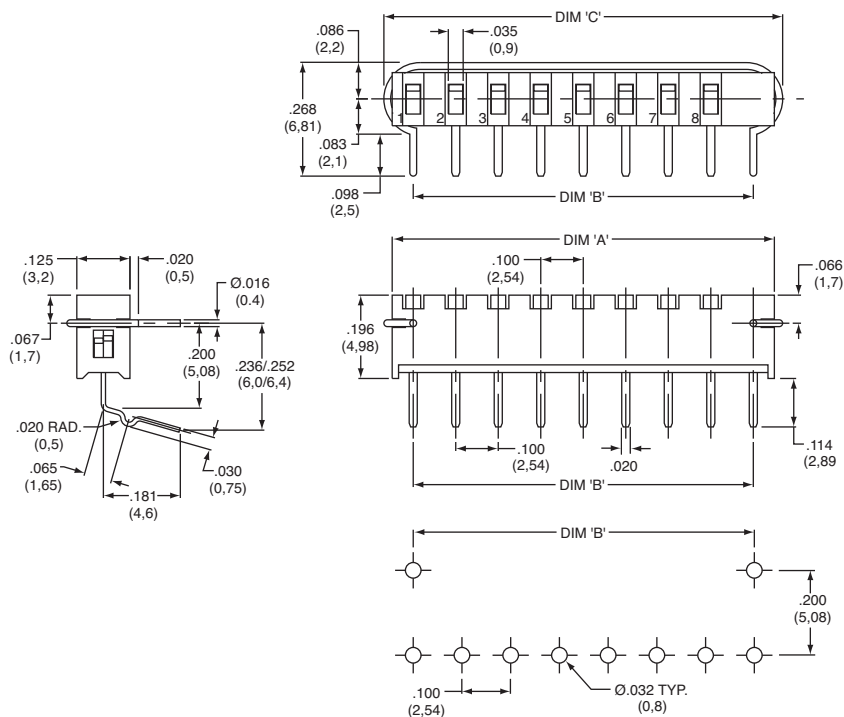
ROHS PART #	PART TIN LEAD #	NO.POS.	DIM. 'A'	DIM. 'B'	DIM. 'C'	QUANTITY PER TUBE
<b>SP02AB</b>	<b>SP02A</b>	2	.298 (7,58)	.200 (5,08)	.338 (8,58)	50
<b>SP04AB</b>	<b>SP04A</b>	4	.498 (12,66)	.400 (10,16)	.538 (13,66)	35
<b>SP06AB</b>	<b>SP06A</b>	6	.698 (17,74)	.600 (15,24)	.738 (18,74)	25
<b>SP08AB</b>	<b>SP08A</b>	8	.898 (22,82)	.800 (20,32)	.938 (23,82)	20
<b>SP10AB</b>	<b>SP10A</b>	10	1.098 (27,9)	1.000 (25,40)	1.138 (28,9)	15

Schematic

SPST





SP08A



## Looking for pricing, stock, or lifecycle information?

Click below to explore more details on WIN SOURCE:

-  [View SP04B](#) on WIN SOURCE
-  [C&K Components](#) Information

## Optimize Your Supply Chain with WIN SOURCE Solutions

-  Global Sourcing Solution
-  Obsolete Management
-  Cost Control Management
-  Shortage Management
-  Alternative Solution
-  Excess Inventory Management