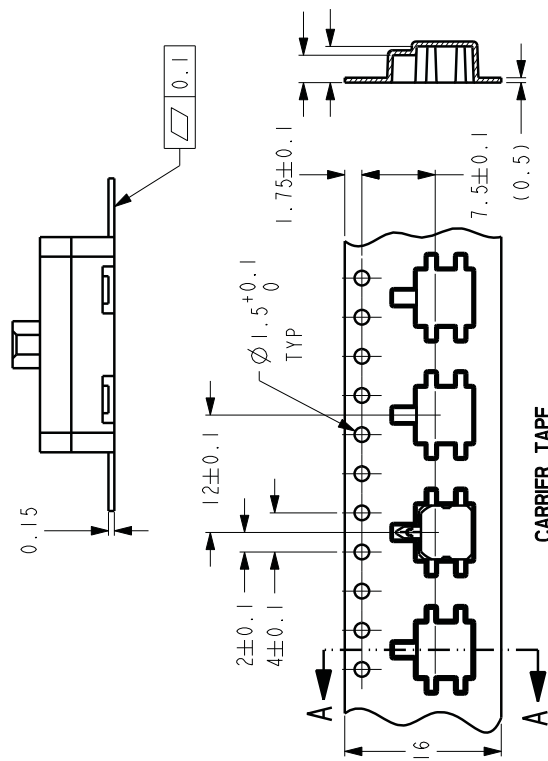
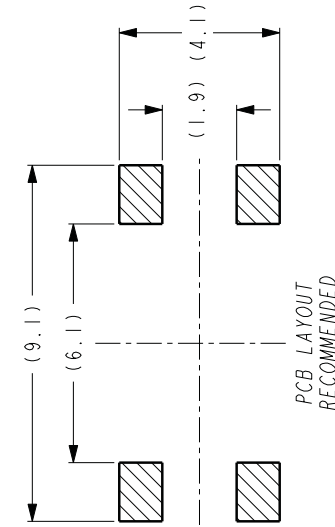
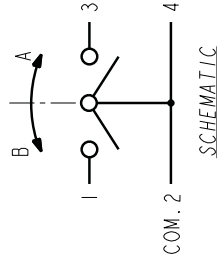
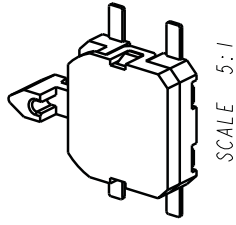
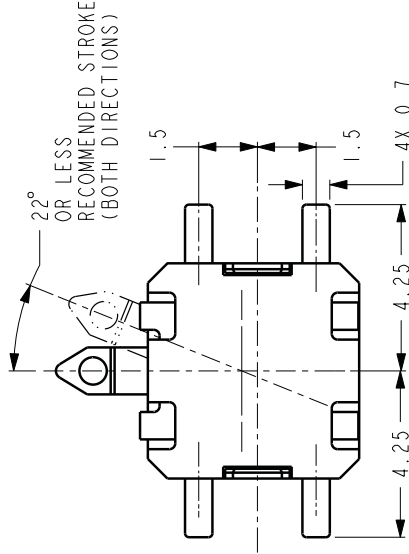
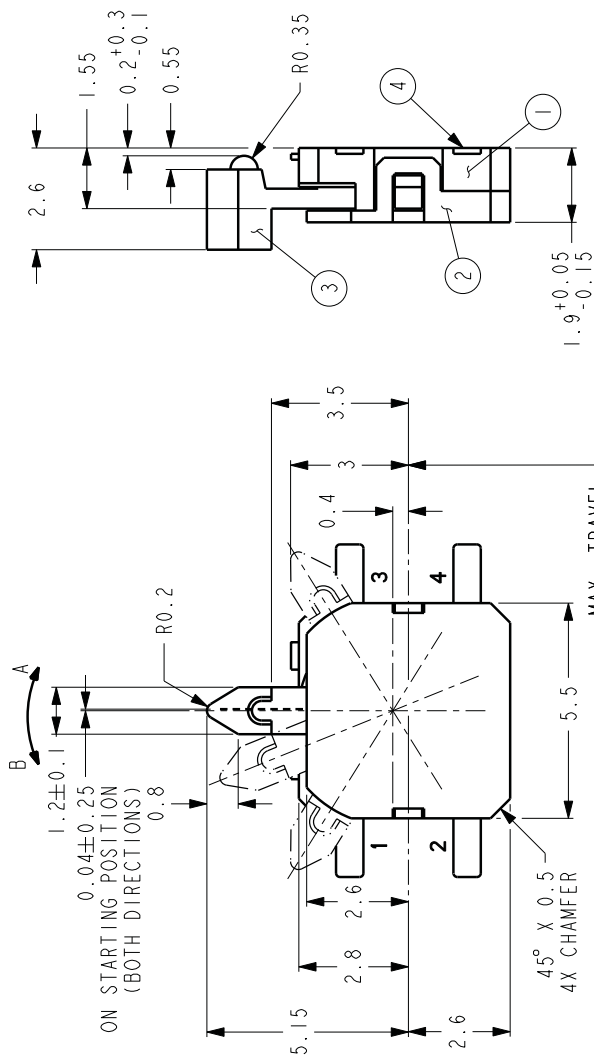


REVISIONS		SDP001	A
ECN	SYM	DESCRIPTION	DATE
0004274	A	RELEASED TO PRODUCTION	3/26/09 CAB

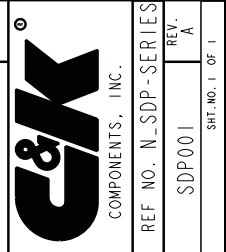


No	DESCRIPTION	MATERIAL	FINISH	COLOR
1	BASE	PA		BLACK
2	COVER	PA		GRAY
3	ACTUATOR	PA		BLACK
4	TERMINALS	COPPER ALLOY	MBNi - Ag	
	SPRING	SS		
	MOVEABLE	SS		

CAD FILE NO.: SDP001-OL_A

ALL DIMS. AND TOLS. PER ANSI Y14.5	UNLESS OTHERWISE SPECIFIED DIMENSIONS ARE IN MM
THIS DOCUMENT AND THE INFORMATION IN IT IS THE EXCLUSIVE PROPERTY OF C&K COMPONENTS, INC. AND IS NOT TO BE USED OR DISCLOSED WITHOUT THE EXPRESS PERMISSION OF C&K COMPONENTS, INC.	
<input checked="" type="checkbox"/> CRITICAL - MUST COMPLY WITH C&K QUALIFICATION STD. CK600019	SCALE 8:1
<input type="checkbox"/> MAJOR DIMENSION	DRAWN CAB
	DATE 09-Mar-09
	APPROVED


OUTLINE DRAWING		SDP001	REF. NO. N.SDP-SERIES
SDP-SERIES		SDP001	REV. A
		SHT. NO. 1 OF 1	



REV. A
SDP001

Looking for pricing, stock, or lifecycle information?

Click below to explore more details on WIN SOURCE:

-  [View SDP001](#) on WIN SOURCE
-  [C&K Components](#) Information

Optimize Your Supply Chain with WIN SOURCE Solutions

-  Global Sourcing Solution
-  Obsolete Management
-  Cost Control Management
-  Shortage Management
-  Alternative Solution
-  Excess Inventory Management